

TEEHO TEEHO-XXXX

TEEHO Fingerprint Door Lock Model TEEHO-XXXX User Manual

Keyless Entry with Fingerprint, Keypad, and Lever Handles

1. INTRODUCTION

This manual provides detailed instructions for the installation, operation, and maintenance of your TEEHO Fingerprint Door Lock, Model TEEHO-XXXX. Please read this manual thoroughly before installation and use to ensure proper function and security. Keep this manual for future reference.

2. PRODUCT OVERVIEW

The TEEHO Fingerprint Door Lock offers advanced keyless entry solutions for residential use, combining convenience with robust security features. This lock set includes a fingerprint keypad deadbolt and two passage door knobs.

Key Features:

- **3D Fingerprint Unlock:** High recognition rate, unlocking in approximately 1 second.
- **Keyless Entry:** Supports up to 20 programmable access codes (4-10 digits) and multiple fingerprints.
- **Auto-Lock Function:** Customizable automatic locking delay from 10 to 99 seconds.
- **One-Touch Lock:** Instantly lock the door by pressing and holding any key on the keypad for 2 seconds.
- **One-Time PIN Code:** Generate temporary access codes that are automatically deleted after a single use.
- **Security Deadbolt:** ANSI Grade 3 rated, constructed with a sturdy lock cylinder and alloy for durability.
- **Weather Resistance:** IP54 rated for protection against dust and splashing water.
- **Additional Features:** Anti-peeping password input, mute mode, vacation mode, and a backlit keypad for visibility in low light.



Figure 2.1: TEEHO Fingerprint Door Lock with lever handle.

3. SETUP AND INSTALLATION

3.1 Door Preparation and Dimensions

Ensure your door meets the following specifications for proper installation. The lock is suitable for both left-handed and right-handed doors.

- **Backset:** 2-3/8 inches (60 mm) or 2-3/4 inches (70 mm).
- **Door Thickness:** 1-3/8 inches (35 mm) to 2 inches (50 mm).
- **Door Hole Diameter:** Only suitable for 2-1/8 inches (54 mm) door holes.

Fits on Most Standard Doors

✓ Left-Handed Door

✓ Right-Handed Door

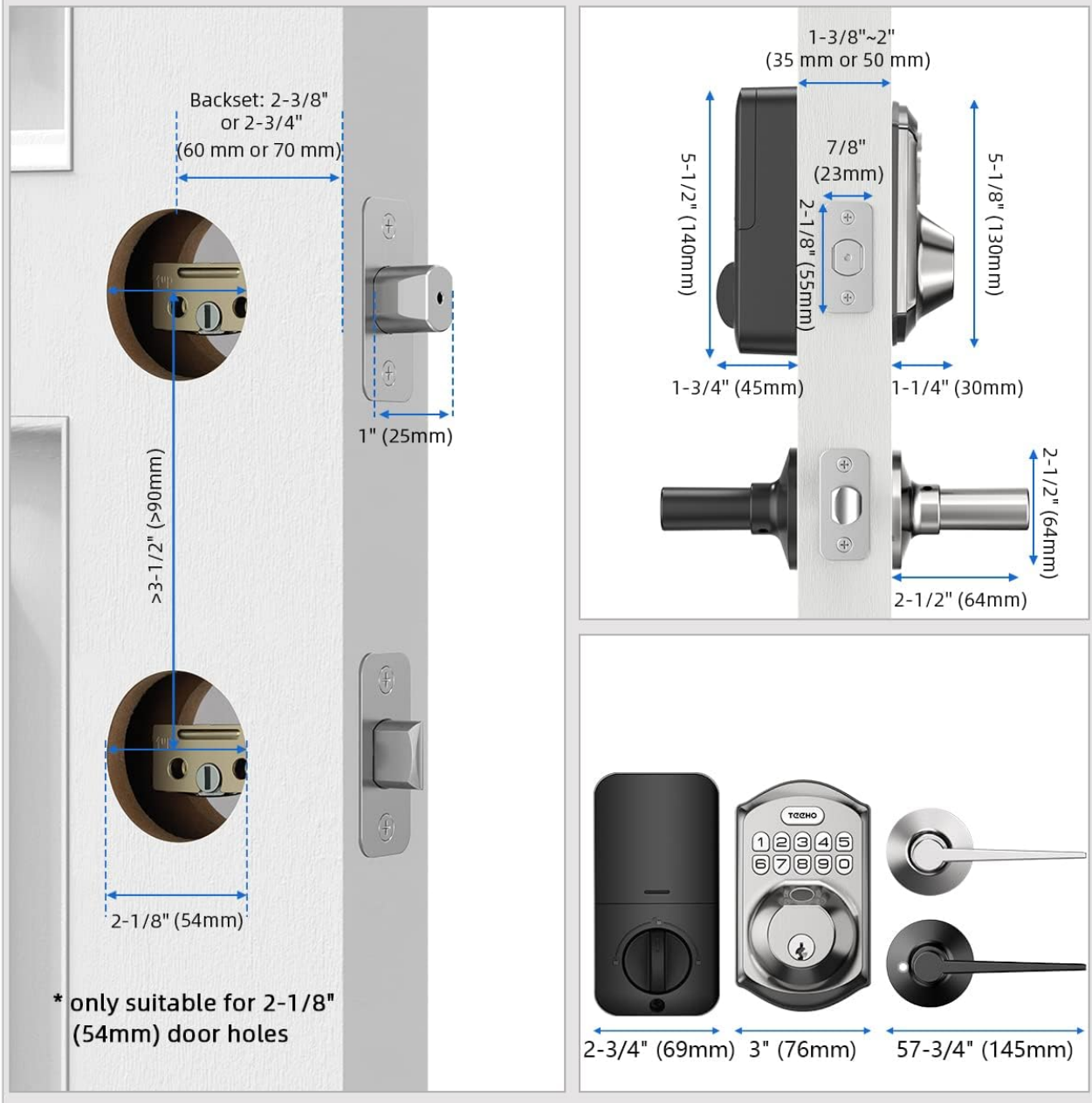


Figure 3.1: Door preparation and dimensions.

3.2 Battery Installation

The lock requires 4 AA batteries (not included). Alkaline batteries are recommended for optimal performance and battery life. Install batteries into the interior assembly of the lock.

Function & Security



20 Fingerprints



20 User Codes



Auto-Lock



IP54 Waterproof



One-Time PIN Code



One Touch Locking



Low Battery indicator



UP to 1 Year
Battery Life

*4 AA batteries
are not included
Alkaline batteries
are recommended

Figure 3.2: Battery compartment and low battery indicator.

3.3 Initial Programming

Refer to the included quick start guide for initial programming steps, including setting the master code and enrolling the first fingerprint. It is crucial to set a master code immediately after installation for security purposes.

4. OPERATING INSTRUCTIONS

4.1 Fingerprint Unlock

To unlock the door using your fingerprint, place your registered finger on the fingerprint sensor. The lock will recognize your fingerprint in approximately 0.3 seconds and unlock the door within 1 second.



Figure 4.1: Fingerprint unlocking in progress.

4.2 Keypad Entry

Enter your 4-10 digit access code on the backlit keypad. The lock supports an anti-peeping password feature, allowing you to enter random digits before or after your actual code to prevent others from guessing it.

Auto-lock & One-touch Locking

10-99 Seconds Auto Lock &
2 Seconds One-touch Lock



Figure 4.2: Using the anti-peep tactile keypad.

4.3 Auto-Lock and One-Touch Lock

- **Auto-Lock:** The lock can be configured to automatically lock after a set period (10-99 seconds) once the door is closed.
- **One-Touch Lock:** To manually lock the door instantly, press and hold any key on the keypad for 2 seconds.

Anti-peep Tactile Keypad

6421 **51381** 9352

Password

Random digits

Add random digits to protect your passcode from prying eyes. Easy to use with the backlight at night.



Figure 4.3: Auto-lock and one-touch locking.

4.4 One-Time PIN Code

Generate a temporary, single-use PIN code for visitors or service personnel. This code will automatically delete after its first use, providing secure temporary access without compromising your permanent codes.

One-Time PIN Code



The Entry Code is **'13579'**

okey, I'm in. Thanks



Figure 4.4: One-time PIN code usage.

5. MAINTENANCE

5.1 Battery Replacement

The lock is designed for over 1 year of battery life under normal use. A low battery indicator will alert you when it's time to replace the 4 AA batteries. Replace all batteries simultaneously with new alkaline batteries.

5.2 Cleaning

Clean the lock's exterior with a soft, damp cloth. Avoid using abrasive cleaners or solvents, as these can damage the finish or electronic components. Ensure the fingerprint sensor and keypad are free of dirt and debris for optimal performance.

5.3 Weather Protection

The lock has an IP54 weather resistance rating, protecting it from splashing water and limited dust ingress. While durable, avoid direct exposure to heavy rain or prolonged submersion.

6. TROUBLESHOOTING

- **Lock not responding:** Check battery levels. Replace batteries if the low battery indicator is on or if the lock is completely unresponsive.
- **Fingerprint not recognized:** Ensure your finger is clean and dry. Try re-enrolling your fingerprint if issues persist.
- **Keypad not working:** Ensure the keypad is clean. If the backlight is off, check batteries.
- **Auto-lock not engaging:** Verify the auto-lock setting is enabled and the delay time is correctly configured. Ensure the door is fully closed.
- **Lock feels stiff:** Check for any obstructions in the door frame or latch mechanism. Ensure the lock is properly aligned.

For further assistance, please refer to the manufacturer's support resources.

7. SPECIFICATIONS

Feature	Specification
Brand	TEEHO
Model Number	TEEHO-XXXX
Lock Type	Keypad, Fingerprint
Material	Nickel
Color	Satin Nickel
Finish Type	Brushed
Power Source	4 AA Batteries (Alkaline recommended)
Weather Resistance	IP54
Included Components	Fingerprint keypad door lock, 2 passage door knobs
Recommended Use	Residential door security and keyless entry

8. WARRANTY AND SUPPORT

For warranty information, technical support, or to purchase replacement parts, please contact TEEHO customer service. Refer to the product packaging or the official TEEHO website for contact details.

© 2023 TEEHO. All rights reserved.