

MOVE SPEED B0C69TJPSK

MOVE SPEED 1TB Solid State Flash Drive User Manual

Model: B0C69TJPSK | Brand: MOVE SPEED

1. INTRODUCTION

The MOVE SPEED 1TB Solid State Flash Drive is a high-performance portable storage solution designed for rapid data transfer and expanded storage across various devices. Featuring both USB 3.2 and Type-C dual interfaces, it offers versatile connectivity for modern smartphones, computers, and other compatible electronics. Its robust zinc alloy construction ensures durability and efficient heat dissipation, making it a reliable choice for backing up important files, expanding device memory, and transferring large media files quickly.



Figure 1: The MOVE SPEED 1TB Solid State Flash Drive, showcasing its dual USB-A and USB-C connectors.

2. PRODUCT OVERVIEW

The MOVE SPEED Solid State Flash Drive is engineered for both speed and convenience. Its compact design incorporates dual interfaces, allowing seamless connection to a wide range of devices without the need for adapters. The durable zinc alloy casing provides protection against environmental factors and aids in thermal management.

2.1 Key Features

- **High-Speed Transmission:** Up to 570MB/s read speed and 450MB/s write speed, significantly faster than standard USB 3.1 flash drives.

- **Dual Interfaces:** Equipped with both USB 3.2 (Type-A) and Type-C ports for broad compatibility.
- **Wide Compatibility:** Supports iPhone 15/16 series, Android Type-C phones, desktops, notebooks, car audio systems, smart TVs, and more.
- **Durable Construction:** Made from high-quality zinc alloy, offering waterproof, dust-proof, anti-drop, high temperature, and anti-magnetic properties.
- **Plug and Play:** No drivers or software required for most operating systems.

Widely Compatibility

USB-A and USB-C ports for maximum compatibility

Desktop



Macbook



Android Phones with USB-C port



iPhone 15 or later series



Car Audio



Smart TV



Figure 2: The flash drive's broad compatibility with various devices, including computers, smartphones, and entertainment systems.

3. SETUP

The MOVE SPEED Solid State Flash Drive is designed for ease of use with its plug-and-play functionality. No complex installation or driver setup is typically required for most compatible devices.

3.1 Connecting to a Computer (USB-A)

1. Identify an available USB-A port on your desktop or laptop computer.
2. Extend the USB-A connector from the flash drive by sliding the protective cover.
3. Insert the USB-A connector firmly into the computer's USB-A port.
4. The drive will be automatically recognized by your operating system. A small LED indicator on the drive may illuminate to confirm power.

SSD-class speed transfer 1G in 2 seconds

USB3.2+Type C

Universal for Andriod Phone,
iPhone 15 and
later series, Computer



Read **520MB/s**

Write **450MB/s**

*note: Based on internal testing from MOVE SPEED laboratory, performance may vary slightly due to factors such as host equipment, interfaces, and usage conditions.

Figure 3: Connecting the flash drive to a laptop via the USB-A port for high-speed data transfer.

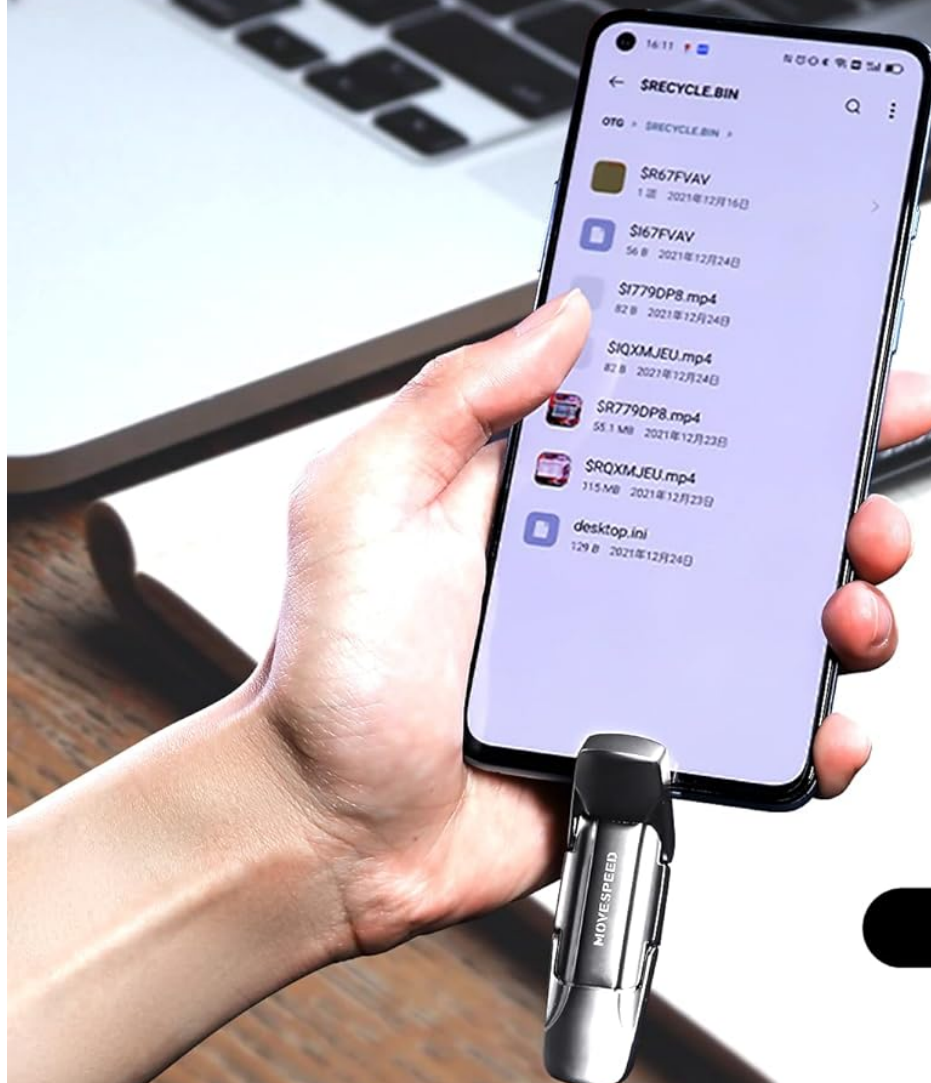
3.2 Connecting to a Smartphone/Tablet (USB-C)

1. Identify the USB-C port on your compatible smartphone or tablet (e.g., iPhone 15/16 series, Android Type-C phone).

2. Extend the USB-C connector from the flash drive by sliding the protective cover.
3. Insert the USB-C connector firmly into your device's USB-C port.
4. Your device should recognize the drive. You may need to navigate to a file manager application (e.g., 'Files' app on iOS, 'My Files' on Android) to access the drive's contents.

Android phone and computer

Back up your data drive



Plug and Play

Figure 4: The flash drive connected to an Android phone, ready for data backup and expansion.

4. OPERATING INSTRUCTIONS

Once connected, the MOVE SPEED Solid State Flash Drive functions like any standard external storage device, allowing you to easily manage your files.

4.1 File Transfer (General)

1. Ensure the flash drive is properly connected to your device.
2. Open your device's file explorer (e.g., File Explorer on Windows, Finder on macOS, Files app on mobile).
3. Locate the files you wish to transfer.
4. Drag and drop the files to and from the "MOVESPEED" drive icon, or use copy/paste functions.
5. For optimal performance and data integrity, always safely eject the drive before physical removal.

Backing up your hard drive Easy data backup

Universal for Android phone and computer



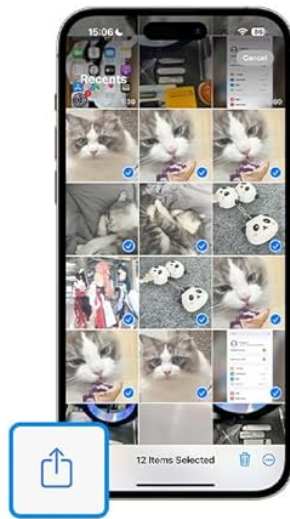
Figure 5: Seamless data backup and transfer between mobile devices and computers using the dual-interface drive.

4.2 Transferring Files from iPhone 15/16 Series

1. Connect the flash drive to your iPhone's USB-C port.
2. Open the Photos app.

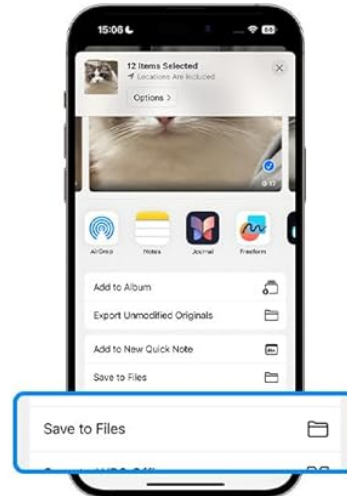
3. Select the photos or videos you wish to transfer.
4. Tap the Share button (usually a square with an arrow pointing up).
5. Select 'Save to Files' or 'Export Unmodified Originals'.
6. In the Files app, navigate to 'Browse', then tap 'MOVESPEED'.
7. Choose your target folder on the drive and tap 'Save'.

Transfer Files from iPhone 15, 16



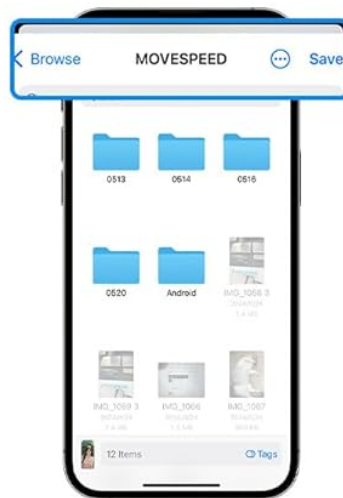
Step 1

- Open Photos APP
- Select the photos or videos
- Tap the Share button



Step 2

- Tap Save to Files or Export Unmodified Originals



Step 3

- Back to Browse, tap MOVESPEED
- Choose target folder, tap Save

Figure 6: Step-by-step guide for transferring media from iPhone 15/16 to the flash drive.

5. MAINTENANCE

To ensure the longevity and optimal performance of your MOVE SPEED Solid State Flash Drive, consider the following

maintenance tips:

- **Safe Ejection:** Always safely eject the drive from your device before unplugging it to prevent data corruption.
- **Physical Protection:** While durable, avoid excessive force, dropping, or exposing the drive to extreme temperatures beyond its operating range.
- **Cleaning:** Use a soft, dry cloth to clean the exterior. Avoid liquid cleaners or abrasive materials.
- **Heat Dissipation:** The drive features a three-hole ventilation system for heat dissipation. Ensure these vents are not obstructed during prolonged use, especially during large file transfers.



Figure 7: The internal design and robust casing contribute to stable data transfer and durability.

6. TROUBLESHOOTING

If you encounter issues with your MOVE SPEED Solid State Flash Drive, refer to the following common solutions:

- **Drive Not Recognized:**
 - Try switching the interface (USB-A to USB-C or vice-versa) or using a different USB port/device.
 - Ensure the drive is fully inserted into the port.
 - Some devices may not support the exFAT file system. You might need to reformat the drive to a compatible file system (e.g., FAT32 for broader compatibility, though this limits individual file size). *Note: Reformatting will erase all data on the drive.*
 - If the device remains unrecognized across all other devices, contact customer support.
- **Slow Transfer Speeds:**
 - Ensure you are using a USB 3.0/3.1/3.2 compatible port on your computer or device. Older USB 2.0 ports will result in significantly slower speeds.
 - Close other applications that might be using system resources or accessing the drive.
 - Large numbers of small files transfer slower than a single large file of the same total size.

- **Data Loss:**
 - Always safely eject the drive before removal.
 - Avoid physical shock or exposure to extreme conditions.
 - For critical data, always maintain backups on multiple storage devices.

7. SPECIFICATIONS

Feature	Specification
Brand	MOVE SPEED
Model	B0C69TJPSK
Memory Storage Capacity	1 TB
Read Speed	Up to 570 MB/s
Write Speed	Up to 450 MB/s
Hardware Interface	USB 3.2 Gen 2, USB Type A, USB Type C
Flash Memory Type	NAND
Color	Silver
Product Dimensions	0.35"D x 0.67"W x 2.67"H
Item Weight	2.89 ounces
Manufacturer	MOVE SPEED

8. WARRANTY & SUPPORT

MOVE SPEED provides a user manual and customer service for this product. For any displeasure or issues, our after-sale team is available 7x24 hours and will address your concerns within 24 hours. A 30-day 100% refund policy is also in place if you are not satisfied with the product.


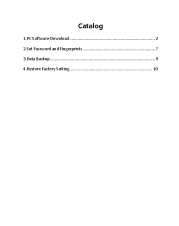
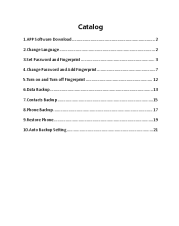


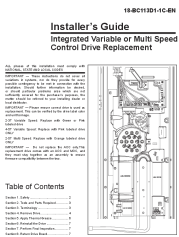
For further assistance, please refer to the official MOVE SPEED store or contact their customer service directly via the contact information provided in your product packaging.

Online Resources:

- Official User Guide (PDF): [Download PDF](#)
- Visit the MOVE SPEED Store: [MOVE SPEED Store on Amazon](#)



Related Documents - B0C69TJPSK

	<p>MOVESPEED USB Solid State Drive User Guide and Warranty Information</p> <p>Comprehensive user guide for MOVESPEED USB 3.2 Solid State Drives. Learn about plug-and-play setup, high-speed connectivity, safe data handling, warranty policies, and environmental compliance.</p>
	<p>MOVE SPEED MoveSpeedDrivePro USB Flash Drive User Manual</p> <p>User manual for the MOVE SPEED MoveSpeedDrivePro USB flash drive. This guide covers PC software download and installation, setting up AES256 and fingerprint encryption, data backup procedures, and restoring factory settings. Features USB3.2, Type C, and 520MB/s speeds.</p>
	<p>Move Speed Drive User Guide: Backup, Encryption, and Fingerprint Features</p> <p>A comprehensive guide to the Move Speed Drive, detailing how to use its software for data backup, phone backup, restore operations, and security features like password and fingerprint encryption.</p>
	<p>G-Technology Product Guide: High-Performance Storage for Creative Professionals</p> <p>Explore the comprehensive G-Technology product guide featuring high-performance, reliable storage solutions designed for end-to-end creative workflows, including NAS, external drives, and accessories for content creators.</p>
	<p>Lezyne Year 7 Catalog: High-Performance Cycling Accessories</p> <p>Explore the comprehensive 2014 Lezyne Year 7 catalog, featuring innovative LED lights, high-performance floor pumps, hand pumps, CO2 inflators, bottle cages, shop tools, multi-tools, tire repair kits, and organizers designed for cyclists.</p>
	<p>Trane Integrated Variable or Multi Speed Control Drive Replacement Installer's Guide</p> <p>Comprehensive installer's guide for replacing Trane Integrated Variable or Multi Speed Control Drives. Covers safety warnings, required tools and parts, terminology, step-by-step removal and installation procedures, thermal grease application, final inspection, and drive board return instructions.</p>