

WOLFBOX CPL Filter

WOLFBOX CPL Filter Instruction Manual

For G840S, G850, G900, G840H, G900PRO, G850PRO, G900 Tripro Dash Cams

1. INTRODUCTION

The WOLFBOX Circular Polarizing Lens (CPL) filter is an accessory designed to enhance the video quality of your compatible WOLFBOX mirror dash camera. It works by reducing unwanted reflections and glare, particularly from windshields, water, and other reflective surfaces, leading to clearer and more vibrant recordings.

This manual provides essential information for the proper installation, operation, and maintenance of your CPL filter.

2. COMPATIBLE DASH CAM MODELS

This CPL filter is specifically designed for the front camera of the following WOLFBOX mirror dash cam models:

- G840S
- G850
- G900
- G840H
- G900PRO
- G850PRO
- G900 Tripro

3. PRODUCT FEATURES

The WOLFBOX CPL filter offers several benefits for your dash cam recordings:

- **Improved Imaging:** Effectively eliminates reflections from glass and water surfaces, enhancing overall image clarity.
- **Enhanced Color:** Increases the saturation and contrast of recorded photos and videos, resulting in more vivid visuals.
- **Glare Reduction:** Features multiple layers of coating to optimize light transmission and significantly reduce glare, especially from bright lights or sunlight.
- **Lens Protection:** Provides an additional layer of protection for your dash cam's lens, guarding against

dust and other small particles, thereby extending the lens's lifespan.

4. SETUP AND INSTALLATION

Follow these steps to properly install the CPL filter onto your WOLFBOX dash cam:

1. **Prepare the Dash Cam:** Ensure your dash cam is turned off and, if possible, remove it from its mount for easier access to the front camera lens.
2. **Align the CPL Filter:** Carefully align the CPL filter with the front camera lens of your WOLFBOX dash cam. The filter is designed to fit securely over the lens housing.
3. **Attach the Filter:** Gently push and twist the CPL filter onto the dash cam lens. Some models may use a tension fit or a twist-lock mechanism. Apply even pressure and rotate until the filter is securely seated. Avoid excessive force to prevent damage to the camera lens or filter.
4. **Verify Attachment:** Once attached, ensure the filter is stable and does not obstruct the camera's field of view.

Easy Installation

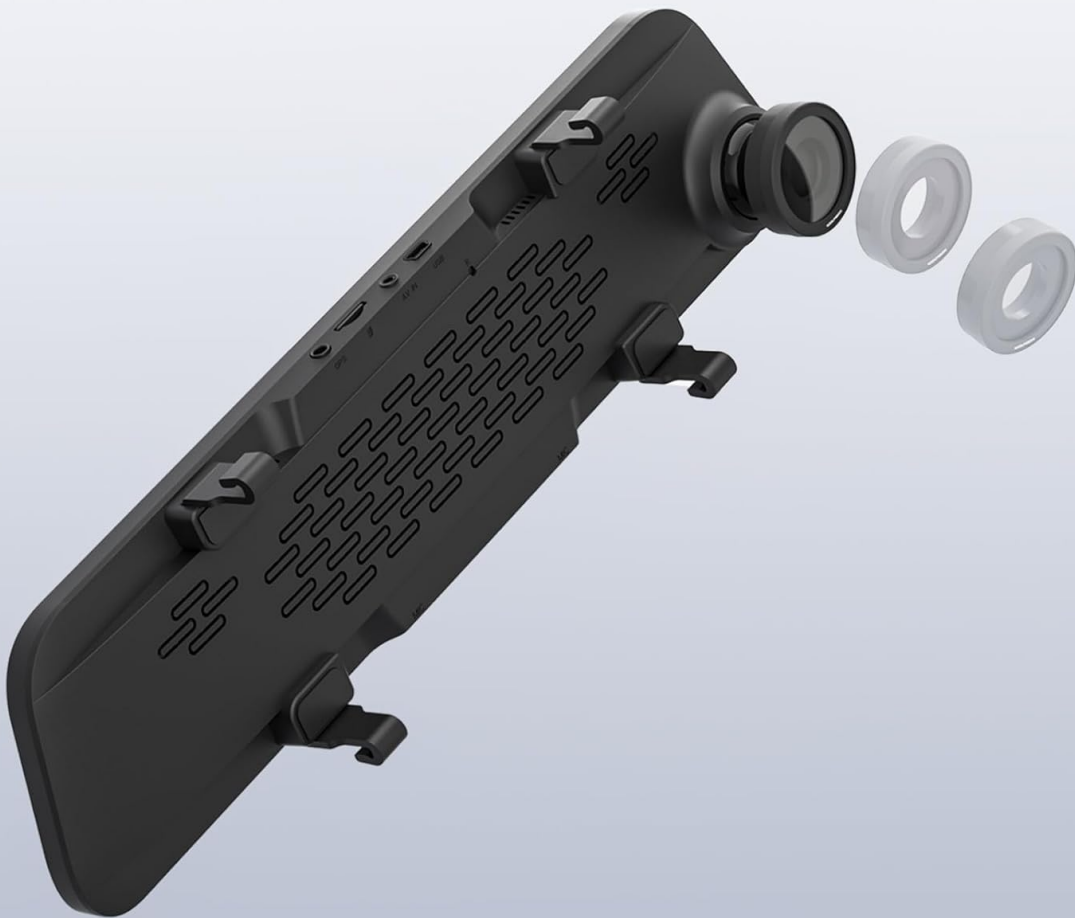


Image: The CPL filter positioned next to a dash cam lens, illustrating the installation process.



Image: A comparison showing a WOLFBOX dash cam with the CPL filter installed and another without, highlighting the filter's physical presence.

5. OPERATING INSTRUCTIONS

The CPL filter is designed for continuous use. For optimal performance, you may need to adjust its rotation:

1. **Initial Adjustment:** After installation, with the dash cam powered on and recording, gently rotate the outer ring of the CPL filter. Observe the live view on your dash cam's screen.
2. **Optimize Effect:** Rotate the filter until reflections (e.g., from the dashboard on the windshield) are minimized and colors appear most vibrant. The optimal angle will vary depending on lighting conditions and the angle of the sun.
3. **Daytime Use:** The CPL filter is particularly effective in bright conditions to reduce glare and enhance sky and foliage colors.
4. **Nighttime Use:** While primarily beneficial for daytime glare, the CPL can also help reduce headlight glare from oncoming vehicles at night. Adjust as needed for best results.

Reduced exposure



Image: Visual demonstration of reduced reflections on a car's surface when using a CPL filter compared to not using one.

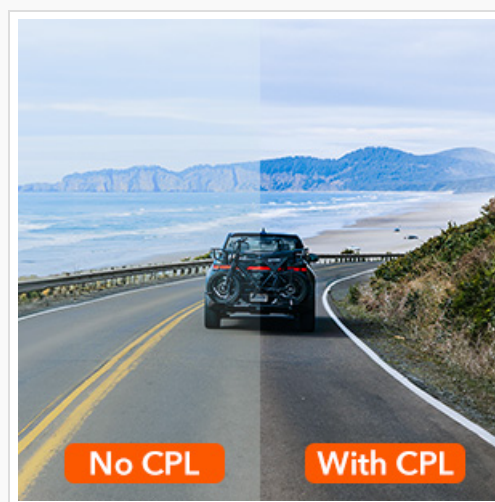


Image: A daytime scene showing the difference in image clarity and reflection reduction with and without the CPL filter.

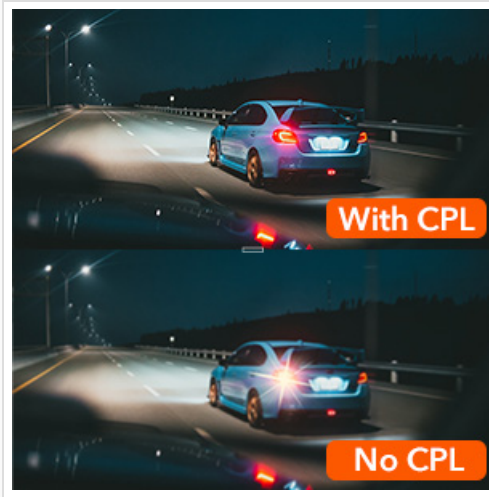


Image: A nighttime scene illustrating how the CPL filter helps reduce glare from oncoming headlights.

6. MAINTENANCE

Proper care ensures the longevity and effectiveness of your CPL filter:

- **Cleaning:** Use a soft, lint-free microfiber cloth specifically designed for optical lenses. Gently wipe the filter surface to remove dust or smudges. For stubborn marks, a small amount of lens cleaning solution applied to the cloth (not directly to the filter) can be used.
- **Avoid Abrasives:** Do not use abrasive materials, harsh chemicals, or paper towels, as these can scratch the filter coating.
- **Storage:** When not in use, store the CPL filter in a clean, dry place, preferably in its original packaging or a protective pouch, to prevent dust accumulation and accidental damage.
- **Handling:** Always handle the filter by its edges to avoid leaving fingerprints on the glass surface.



Image: A visual representation of how the CPL filter helps protect the dash cam lens from dust and dirt.

7. TROUBLESHOOTING

If you encounter issues with your CPL filter, consider the following:

- **Difficulty Attaching:** Ensure the filter is correctly aligned with the dash cam lens. Apply gentle, even pressure while twisting. Avoid forcing the filter, as this may damage the lens threads or the filter itself. If it feels too tight, double-check compatibility with your specific dash cam model.
- **Blocked View (Vignetting):** If the filter appears to block the corners of your camera's view, ensure it is

fully and correctly seated. Improper attachment can sometimes cause vignetting. Verify that the filter is designed for your specific dash cam model, as incorrect sizing can lead to this issue.

- **Insufficient Glare Reduction:** Rotate the outer ring of the CPL filter while observing the live view on your dash cam screen. The polarizing effect is directional, and optimal reduction occurs at a specific angle relative to the light source.
- **Reduced Image Brightness:** CPL filters inherently reduce the amount of light entering the lens. This is normal. If the image becomes too dark, especially in low-light conditions, consider removing the filter or adjusting your dash cam's exposure settings if available.

8. SPECIFICATIONS

Feature	Detail
Brand	WOLFBOX
Material	Glass
Coating Description	Glare-reducing coating
Photo Filter Effect Type	Polarizer
Water Resistance Level	Not Water Resistant
Item Weight	1.76 ounces
Product Dimensions	2.3 x 10 x 15 inches (Packaging)

9. WARRANTY AND SUPPORT

WOLFBOX is committed to product quality and customer satisfaction.

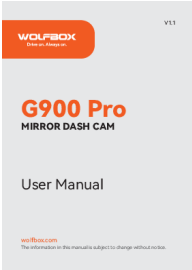

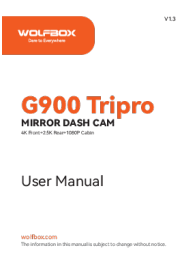
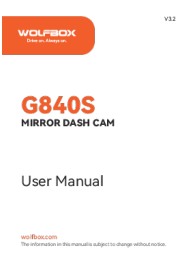
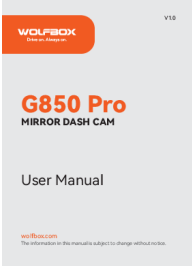
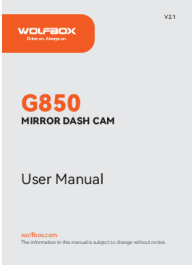
- **Warranty:** This product comes with a 12-month replacement guarantee for quality-related issues.
- **Return Policy:** A 7-day return policy is available. Returns are accepted for defective products.

For technical assistance, warranty claims, or any product-related inquiries, please contact WOLFBOX Customer Service:

Email: service@wolfbox.com

Phone: +1 888 296 8399

Related Documents - CPL Filter

	<p>WOLFBOX G900 Pro Mirror Dash Cam User Manual</p> <p>User manual for the WOLFBOX G900 Pro Mirror Dash Cam, covering features, installation, troubleshooting, and specifications.</p>
	<p>WOLFBOX i03 Mini Dash Cam User Manual</p> <p>Comprehensive user manual for the WOLFBOX i03 Mini Dash Cam, covering product overview, specifications, installation, operation, and troubleshooting.</p>
	<p>WOLFBOX G900 Tripro Mirror Dash Cam User Manual</p> <p>User manual for the WOLFBOX G900 Tripro Mirror Dash Cam, detailing features, installation, and troubleshooting. This dash cam offers 4K front, 2.5K rear, and 1080P cabin recording with advanced features like voice control and Wi-Fi connectivity.</p>
	<p>WOLFBOX G840S 4K Mirror Dash Cam User Manual - Installation, Features, and Support</p> <p>Comprehensive user manual for the WOLFBOX G840S 4K Mirror Dash Cam. Learn about installation, features, app connectivity, troubleshooting, and customer support for your automotive dash camera.</p>
	<p>WOLFBOX G850 Pro Mirror Dash Cam User Manual</p> <p>Comprehensive user manual for the WOLFBOX G850 Pro Mirror Dash Cam, detailing features, installation, operation, and troubleshooting for this 4K dash cam with GPS and Smart Drive capabilities.</p>
	<p>WOLFBOX G850 Mirror Dash Cam User Manual</p> <p>Comprehensive user manual for the WOLFBOX G850 Mirror Dash Cam, covering installation, features, troubleshooting, and specifications.</p>

