

Manuals+

[Q & A](#) | [Deep Search](#) | [Upload](#)

[manuals.plus](#) /

› [REPTI ZOO](#) /

› [REPTI ZOO 24x18 inch Terrarium Stacker Instruction Manual](#)

REPTI ZOO 45523366838439

REPTI ZOO 24x18 inch Terrarium Stacker Instruction Manual

Model: 45523366838439

[Introduction](#)

[Setup](#)

[Operation](#)

[Maintenance](#)

[Troubleshooting](#)

[Specifications](#)

[Warranty &](#)

[Support](#)

1. INTRODUCTION

The REPTI ZOO Terrarium Stacker is designed to efficiently stack two front-opening terrariums, optimizing space in your home or office. Constructed from durable metal, this stacker provides a sturdy and long-lasting solution for housing reptiles and amphibians. It includes a convenient storage area for accessories. This manual provides detailed instructions for assembly, operation, maintenance, and troubleshooting to ensure proper use and longevity of your terrarium stacker.





Image 1.1: The REPTI ZOO Terrarium Stacker in use, supporting two terrariums.

2. SETUP AND ASSEMBLY

Follow these steps to assemble your REPTI ZOO Terrarium Stacker. Ensure all components are present before beginning assembly.

2.1 Package Contents

- 1 x Stacker Frame Kit (metal components)
- 4 x Spacers
- 4 x 3M Glue pieces
- Side Panels (sliding doors)
- Assembly Screws and Hex Key (if required)

2.2 Assembly Instructions

1. **Assemble the Bracket:** Align the metal frame components and secure them using the provided screws and hex

key. Ensure all connections are tight and stable.

2. **Insert Side Panels:** Carefully slide the side panels into the designated grooves within the assembled frame. Ensure they move smoothly.
3. **Attach Spacers:** Apply the 3M glue to the four corners of the top surface of the stacker. Place the spacers onto the glue, ensuring they are firmly attached. These spacers provide stability and prevent direct contact between the terrarium and the stacker.
4. **Position the Stacker:** Place the assembled stacker on top of your first front-opening terrarium. Ensure it is centered and stable.
5. **Add Second Terrarium:** Carefully place your second front-opening terrarium on top of the stacker, aligning it with the base terrarium.

How to Install the Reptile Terrarium Stackers ?

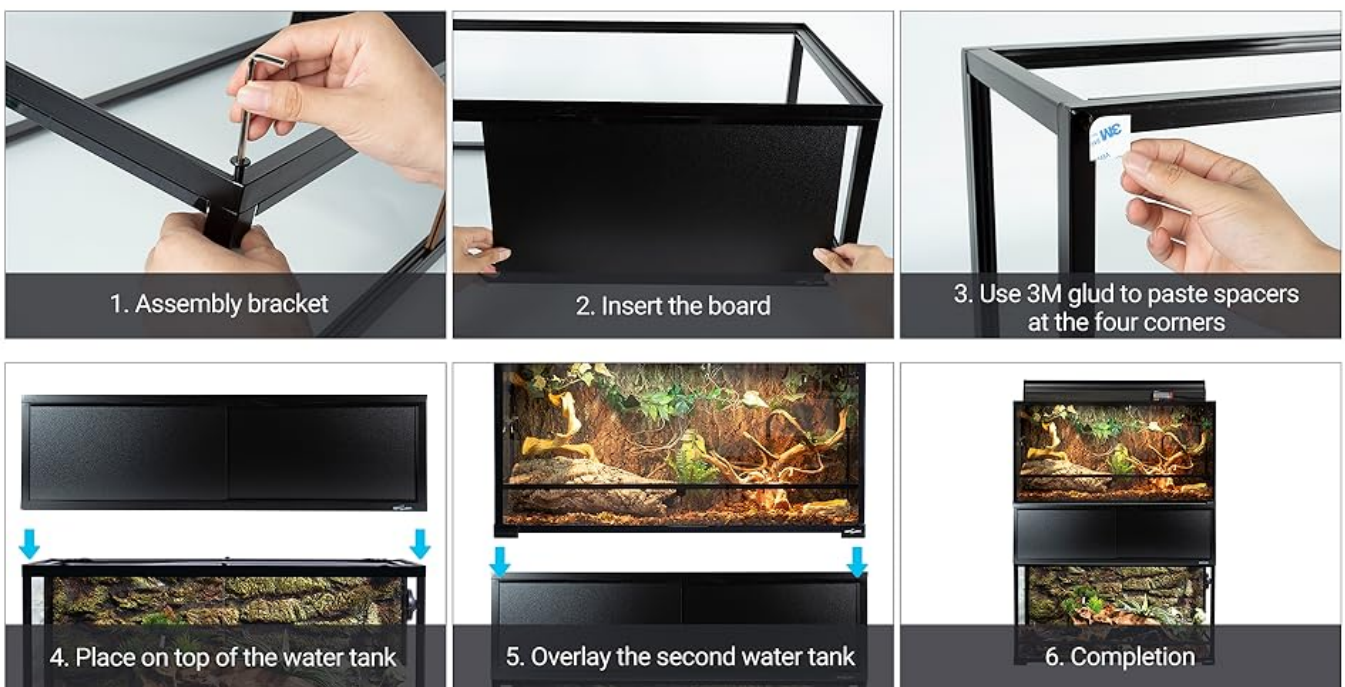


Image 2.1: Visual guide for assembling the terrarium stacker.

2.3 Assembly Video Guide

For a visual demonstration of the assembly process, please refer to the video below. This video illustrates the steps for constructing the REPTI ZOO Terrarium Stacker.

Your browser does not support the video tag.

Video 2.1: Official REPTI ZOO assembly guide for the Deluxe Terrarium Stacker. This video demonstrates the step-by-step process of assembling the stacker, including attaching the frame, installing side panels, and securing components.

3. OPERATION AND USAGE

The REPTI ZOO Terrarium Stacker is designed for ease of use and space efficiency. Here's how to best utilize its features:

3.1 Space Saving

This stacker allows you to stack two compatible front-opening terrariums, effectively doubling your available space for pet

enclosures. This is particularly beneficial in smaller living areas or for enthusiasts with multiple pets.



Image 3.1: Illustration of space optimization achieved by using the terrarium stacker.

3.2 Integrated Storage

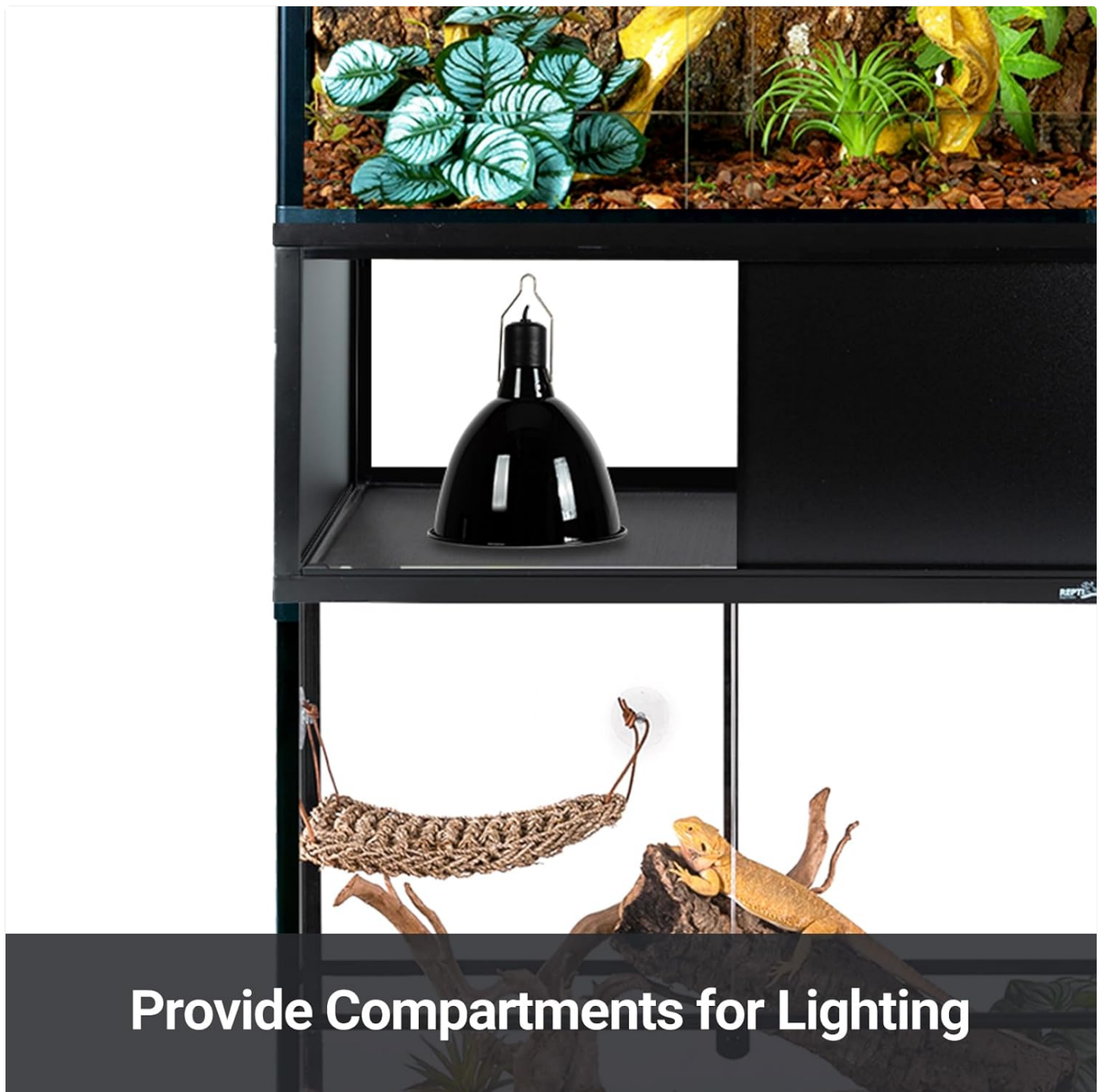
The stacker features a hollow-out design in the middle, providing a convenient storage compartment. This area can be used to store various items such as lighting fixtures, food supplies, wiring, or other reptile care accessories, keeping your setup tidy and organized.

Hollow Out Design

Can store light bulbs, food, wire or other items to meet your storage needs



Image 3.2: The hollow design provides storage for various items.



Provide Compartments for Lighting

Image 3.3: The compartment can house lighting equipment.

4. MAINTENANCE

Proper maintenance ensures the longevity and stability of your terrarium stacker.

- **Cleaning:** Wipe down the metal frame and side panels with a damp cloth as needed. Avoid abrasive cleaners that could damage the finish.
- **Inspection:** Periodically check all screws and connections to ensure they remain tight. Re-tighten if necessary to maintain structural integrity.
- **Material Care:** The stacker is made of premium-quality metal material, designed to be sturdy and rust-resistant. The side panels are thick and solid.

Terrarium Stackers Details



Thick



Bear



Easy



Metal Frame
Durable & Sturdy



Board
Thick & Solid



Corner Spacers & 3M Glue
High Viscosity

Image 4.1: Details of the stacker's construction, highlighting durable metal frame, thick board, and secure spacers.

5. TROUBLESHOOTING

If you encounter any issues with your terrarium stacker, refer to the following common problems and solutions:

Problem	Possible Cause	Solution
Side panels fall out or do not fit correctly.	Incorrect orientation of the stacker frame or panels.	Ensure the stacker frame is assembled with the correct top and bottom orientation. One track for the panels typically has a wider lip; this should be at the bottom. Re-insert panels carefully.
Stacker feels unstable after assembly.	Screws are not fully tightened or components are not properly aligned.	Check all assembly screws and tighten them securely. Ensure all frame pieces are correctly interlocked and aligned. Verify that the spacers are properly attached to the top surface.

Problem	Possible Cause	Solution
Terrarium does not fit on the stacker.	Incorrect terrarium size or type.	Confirm your terrarium dimensions match the stacker's specifications (24" L x 18" W). This stacker is designed for front-opening terrariums and is not applicable to top-opening tanks.

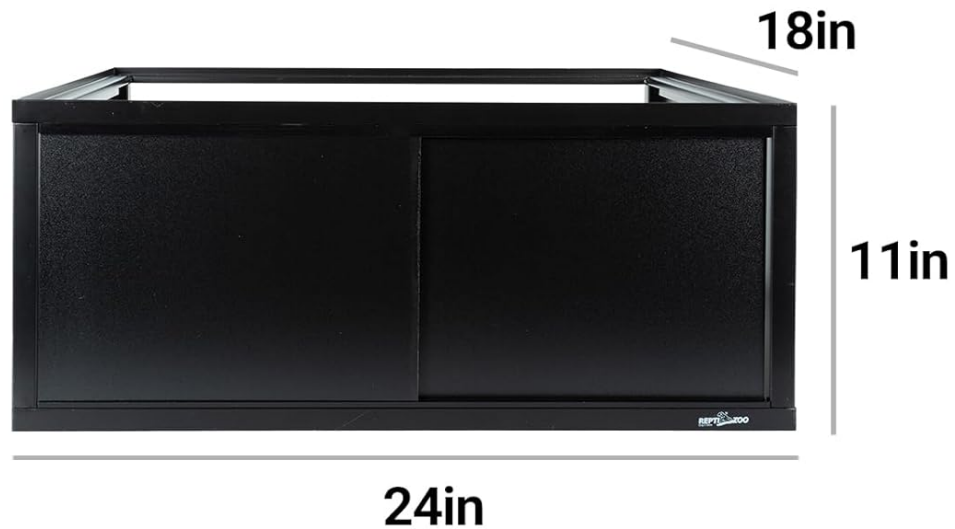
6. SPECIFICATIONS

Key specifications for the REPTI ZOO Terrarium Stacker:

- **Model Number:** 45523366838439
- **Dimensions:** 24 inches (L) x 18 inches (W) x 11 inches (H) (Stacker only)
- **Compatible Terrarium Size:** Designed for 24" L x 18" W front-opening terrariums.
- **Material:** Premium-quality metal frame, thick and solid side panels.
- **Color:** Black
- **Item Weight:** Approximately 10.08 pounds
- **Maximum Load-Bearing Capacity:** 132 lbs (for the stacker itself)
- **Included Components:** Stacker, 4 spacers, 4 pieces of 3M glue.
- **Vivarium Type:** Terrarium accessory.

Universal Dimensions

Compatible with Most Terrarium with Front Opening



Suitable for Front Opening Water Tank
Not Applicable for Top Opening Water Tank

Max Load-Bearing Capacity **132LBS**

Please confirm the size before purchasing!

Image 6.1: Detailed dimensions and compatibility information for the stacker.

7. WARRANTY AND SUPPORT

For warranty information or technical support regarding your REPTI ZOO Terrarium Stacker, please contact REPTI ZOO customer service directly. Refer to the product packaging or the official REPTI ZOO website for the most current contact details and warranty terms.

Manufacturer: REPTI ZOO

Website: [Visit the REPTI ZOO Store on Amazon](#)

