

Manuals+

[Q & A](#) | [Deep Search](#) | [Upload](#)

manuals.plus /

- › [Ongle](#) /
- › [Visage Precision Facial Razors User Manual](#)

Ongle 2

Visage Precision Facial Razors User Manual

Model: 2 | Brand: Ongle

INTRODUCTION

Thank you for choosing Visage Precision Facial Razors by Ongle. This multi-functional tool is designed for precise grooming, including eyebrow shaping, facial hair removal, and gentle skin exfoliation. Crafted with high-quality stainless steel, these razors offer an ergonomic grip for comfortable and controlled use. Please read this manual thoroughly before first use to ensure safe and effective operation.



Image: Visage Precision Facial Razors in packaging and individually.

PRODUCT FEATURES

- **Ergonomic Grip Design:** Thoughtfully crafted handle for seamless fit in hand, providing unmatched control and precision during use.
- **Effortless Touch-Ups:** Ideal for shaping eyebrows, removing peach fuzz or beard hairs, and gently exfoliating the skin for a smooth, radiant finish.
- **Premium Stainless Steel Blade:** Expertly crafted from high-quality stainless steel, offering exceptional sharpness, long-lasting durability, and corrosion resistance. Features fine micro-guards to prevent skin irritation.
- **Protective Cover:** Each razor includes a plastic blade cover for safe storage and travel.
- **Multi-Purpose Use:** Suitable for various areas including eyebrows, facial hair, and can also be used for underarms and legs.

Best Features

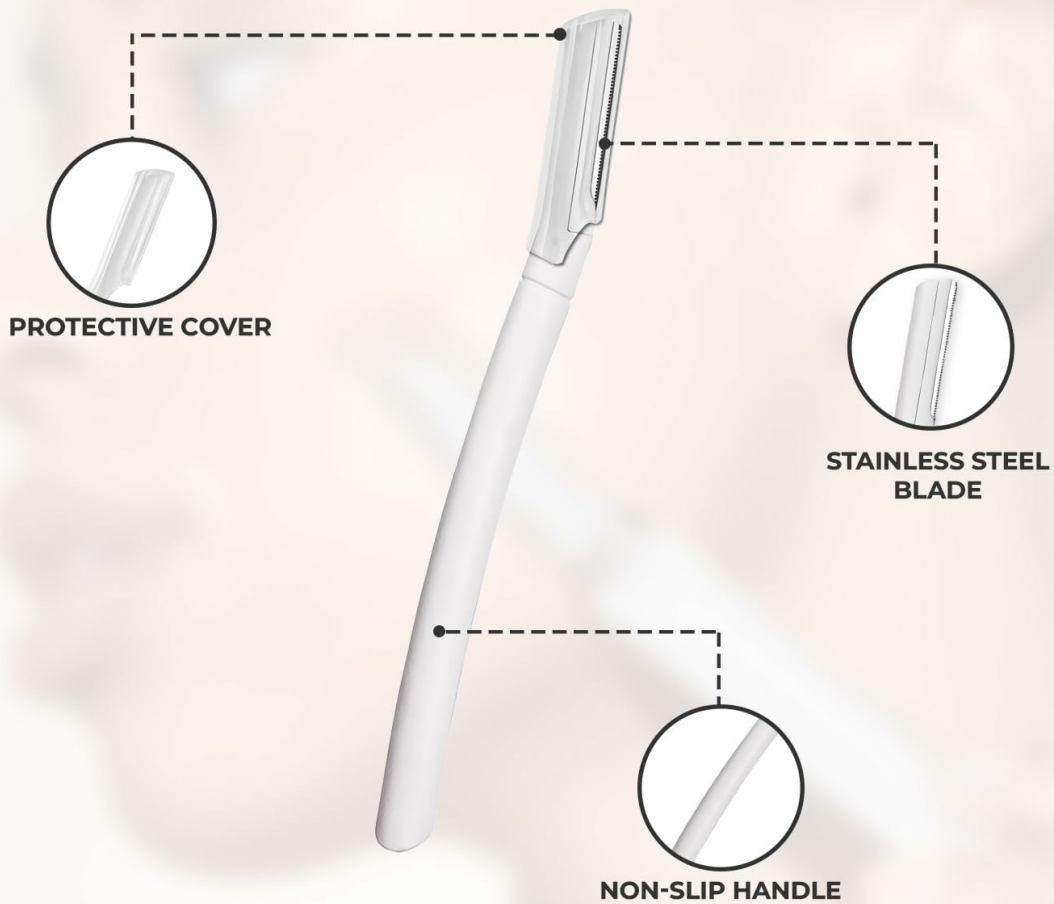


Image: Key features of the Visage Precision Facial Razor.

SAFETY PRECAUTIONS

This product is equipped with a sharp blade. Please observe the following safety guidelines:

- Keep out of reach of children.
- Handle with care to avoid accidental cuts.
- Do not apply excessive pressure during use.
- Avoid using on irritated, broken, or sensitive skin.
- Ensure the razor is cleaned and dried thoroughly after each use to prevent rusting and maintain hygiene.
- Store with the protective cover in place.

SETUP

The Visage Precision Facial Razors are designed for immediate use with minimal setup.

1. Carefully remove the razor from its packaging.

2. Remove the clear protective cap from the blade. Retain this cap for safe storage after use.
3. Inspect the blade for any damage before first use. If damaged, do not use.

OPERATING INSTRUCTIONS

Follow these steps for effective and safe use of your Visage Precision Facial Razor:

1. **Prepare the Skin:** Ensure your skin is clean and dry. For best results and to minimize irritation, consider applying a small amount of shaving cream, gel, or facial oil to the area you intend to groom.
2. **Identify Area:** Determine the specific area of the face or body to be groomed (e.g., eyebrows, upper lip, cheeks, sideburns, peach fuzz, or other fine hairs).
3. **Position the Razor:** Hold the razor at a slight angle (approximately 45 degrees) against the skin.
4. **Gentle Strokes:** Carefully pass the razor over the skin in short, gentle, downward strokes, applying minimal pressure. Shave in the direction of hair growth for less irritation, or against for a closer shave if your skin tolerates it.
5. **Clean Regularly:** Rinse the razor blade frequently under running water during use to remove accumulated hair and maintain optimal sharpness.
6. **Achieve Desired Result:** Continue grooming until the desired smoothness or shape is achieved.
7. **Post-Shave Care:** After shaving, rinse your face with water and apply a soothing moisturizer or serum.



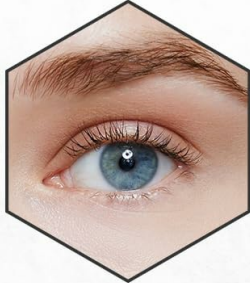
Equipped with a skin-defense guard to prevent skin irritation

Exfoliates dead skin cells, offering a glowing appearance

Perfect for shaving peach fuzz

Image: Demonstrating use of the Visage Precision Facial Razor.

MULTI-FUNCTION



EYEBROWS



FACIAL HAIR



UNDERARMS



LEGS

Image: Multi-functional uses of the Visage Precision Facial Razor.

MAINTENANCE

Proper maintenance will extend the life and effectiveness of your Visage Precision Facial Razors:

- **Cleaning:** After each use, rinse the blade thoroughly under warm running water to remove all hair and debris.
- **Drying:** Gently pat the blade dry with a soft cloth or allow it to air dry completely before replacing the protective cap. This prevents rust and maintains blade sharpness.
- **Storage:** Always replace the protective cap over the blade before storing. Store in a dry place, away from direct moisture.
- **Disposal:** While durable, these razors are designed for multiple uses before disposal. When the blade becomes dull or shows signs of wear, dispose of it safely in a designated sharps container or wrapped securely to prevent injury.

TROUBLESHOOTING

Problem	Possible Cause	Solution
---------	----------------	----------

Problem	Possible Cause	Solution
Razor pulls hair instead of cutting smoothly.	Insufficient lubrication (shaving cream/gel/oil) or dull blade.	Ensure adequate shaving cream or gel is applied to the skin before shaving. If the problem persists, the blade may be dull and require replacement.
Skin irritation or redness after shaving.	Excessive pressure, dry shaving, or sensitive skin.	Use gentle strokes with minimal pressure. Always use on clean, prepared skin with lubrication. If you have sensitive skin, perform a patch test first. Apply a soothing post-shave balm.
Blade appears rusty.	Improper drying or storage.	Ensure the razor is completely dry before storing. Always replace the protective cap. Dispose of rusty blades and use a new razor.

SPECIFICATIONS

Attribute	Detail
Brand	Ongle
Model Number	2
UPC	197644242849
Number of Razors	3 per pack
Blade Material	Stainless Steel
Special Feature	Durability, Ergonomic Grip, Protective Cover, Micro-guards
Skin Type	All
Package Dimensions	6.18 x 3.35 x 0.43 inches
Item Weight	1.13 ounces

The Only Dermaplaning Tool You Will Need



Perfect for travel



Long-Lasting



High-quality sharp blades

1.2 CM
3.3 CM

Image: Visage Precision Facial Razor dimensions and features.

WARRANTY AND SUPPORT

For any questions, concerns, or support regarding your Visage Precision Facial Razors, please contact Ongle customer service. While specific warranty details are not provided in this manual, Ongle is committed to customer satisfaction.

You can visit the official Ongle store for more information and contact options: [Ongle Store on Amazon](#).