

Yamiry YR01

User Manual

YAMIRY SMART DOOR HANDLE LOCK WITH KEYPAD

Model: YR01

1. Introduction

This manual provides detailed instructions for the installation, operation, and maintenance of your Yamiry Smart Door Handle Lock with Keypad. This advanced keyless entry system offers multiple unlocking methods for enhanced convenience and security.

The Yamiry Smart Door Handle Lock is designed for easy DIY installation on most standard American wooden front doors, typically within 10 minutes, without requiring additional drilling. It features a reversible handle for compatibility with both left and right-handed doors.

Manage access conveniently through the mobile app, allowing you to grant permanent or temporary access, generate one-time passcodes remotely, and track unlock records. This smart lock is an ideal solution for homeowners, landlords, and property managers seeking efficient and secure access control.

2. Safety Information

- Read all instructions carefully before installation and use.
- Do not attempt to disassemble or modify the lock. This may void the warranty and compromise security.
- Use only specified battery types (Lithium Ion batteries required, not included).
- Keep mechanical keys in a secure location outside the property to prevent lockout in case of battery failure or electronic malfunction.
- Protect the lock from extreme temperatures and direct water exposure beyond its IP66 rating.
- Ensure all components are securely fastened during installation to prevent accidental dislodgement.

3. Package Contents

Verify that all components are present in your package:

- Exterior assembly (1)

- Interior assembly (1)
- Adjustable latch (1)
- Mechanical key (2)
- Key Fob (2)
- Screw set (1)

4. Specifications

Feature	Detail
Brand	Yamiry
Model Name	YR01
Lock Type	Deadbolt
Material	Stainless Steel, Zinc
Color	Matte Black
Item Dimensions (L x W x H)	5.5 x 2.95 x 0.79 inches
Item Weight	2.59 pounds
Power Source	Lithium Ion batteries (not included)
Connectivity	Bluetooth, Wi-Fi (with optional gateway)
Control Method	App, Remote, Touch, Voice (with optional gateway)
Special Features	Fingerprint, Key Fob, Passcode, App Control, Mechanical Key, Auto-Lock
Waterproof Rating	IP66
Operating Temperature	-22°F to 185°F



Reversible Handle

- ✓ Left-handed Doors
- ✓ Right-handed Doors



Image: The Yamiry Smart Lock is designed to withstand various weather conditions, featuring an IP66 waterproof rating and operational temperatures ranging from -22°F to 185°F.

5. Setup

5.1 Pre-Installation Checks

Before beginning installation, ensure your door meets the following specifications:

- **Door Thickness:** 1-3/8" to 2" (35mm-50mm)
- **Backset:** 2-3/8" (60mm) or 2-3/4" (70mm)
- **Door Hole Diameter:** 2-1/8" (54mm)

No additional drilling is required for most standard installations.



Image: This diagram illustrates the necessary door measurements, including thickness, backset, and door hole diameter, to ensure compatibility with the smart lock. No extra drilling is typically needed.

5.2 Installation Steps

The Yamiry Smart Door Handle Lock is designed for quick and effortless DIY installation, typically taking about 10 minutes. You will primarily need a screwdriver to replace your existing handle, knob, or deadbolt.

1. Remove your existing door hardware.
2. Install the new latch into the door edge.
3. Mount the exterior assembly, ensuring the spindle aligns correctly with the latch.
4. Attach the interior assembly and secure it with the provided screws.
5. Insert the required Lithium Ion batteries (not included) into the interior assembly.
6. Test the lock's functionality with the mechanical key.

YAMIRY Multiple Ways to Unlock



 **Fingerprint**



 **Key Fob**



 **Passcode**

Image: This visual guide demonstrates the straightforward installation process, highlighting that the lock can be installed in approximately 10 minutes without extra drilling. It also shows the reversible handle design, compatible with both left-handed and right-handed doors.



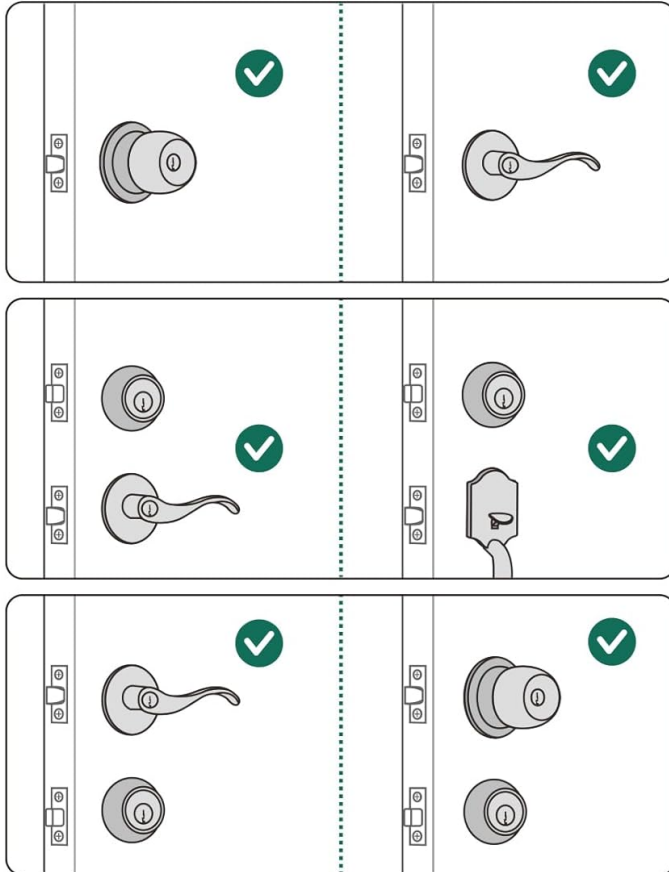
Image: This chart illustrates the compatibility of the Yamiry smart lock with different types of existing door hardware, demonstrating how it can replace standard knobs, handles, and deadbolts.

5.3 App Download and Initial Setup

To unlock the full potential of your smart lock, download the dedicated mobile app. The app allows for convenient access management and monitoring.

1. Scan the QR code in the product packaging or search for the Yamiry app in your device's app store (iOS/Android).
2. Create an account and log in.
3. Follow the in-app instructions to add your new smart lock. Ensure Bluetooth is enabled on your smartphone and you are within range of the lock.
4. Once paired, you can begin configuring user access, passcodes, and other settings.

Before



After

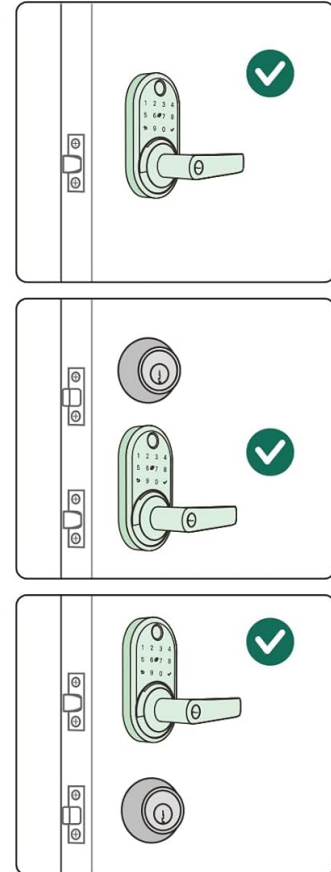


Image: The Yamiry mobile app provides comprehensive control over your smart lock, offering features such as keyless entry, user management, auto-lock settings, access log history, and the ability to generate passcodes remotely.

Video: This video provides an unboxing and initial setup guide for the Yamiry Smart Door Handle Lock with Keypad, demonstrating the components and first steps of installation.

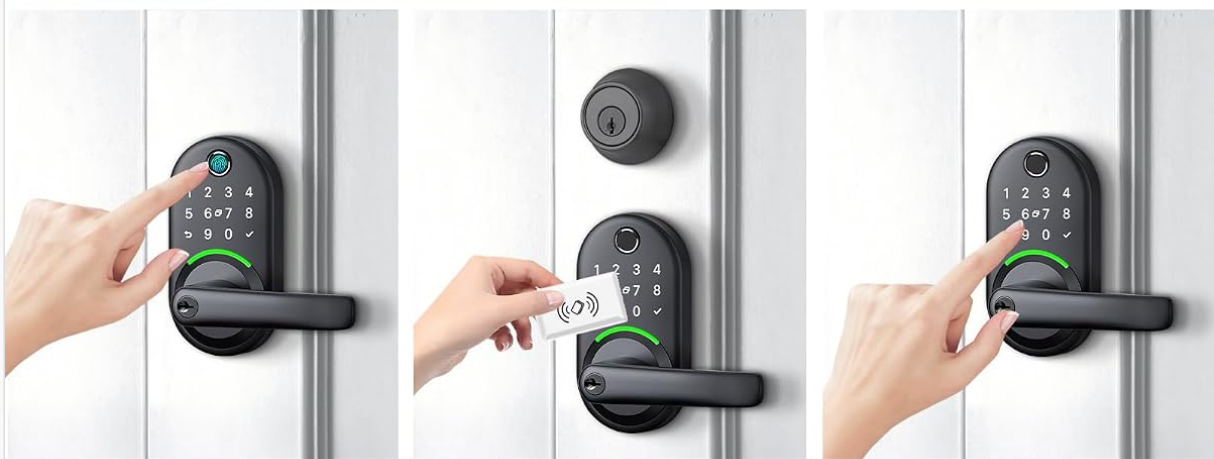
6. Operating the Lock

6.1 Unlocking Methods

Your Yamiry Smart Door Handle Lock offers six versatile ways to unlock:

- **Fingerprint Recognition:** Place your registered finger on the sensor for quick access. The lock identifies your fingerprint in approximately 0.3 seconds.
- **Bluetooth Mobile App:** Use the Yamiry app on your smartphone to unlock the door when within Bluetooth range.
- **Personalized Passcodes:** Enter your unique numerical code on the keypad.
- **Key Fobs:** Tap the provided key fob against the lock's sensor.
- **Mechanical Keys:** Use the traditional mechanical key as a backup.
- **Alexa Voice Unlock & Remote Control (Requires WiFi Gateway):** With a separately sold WiFi gateway, you can unlock the door using Alexa voice commands or remotely via the app from anywhere.

YAMIRY Multiple Ways to Unlock



 **Fingerprint**

 **Key Fob**

 **Passcode**

Image: This illustration highlights the various methods available to unlock the Yamiry smart lock, including fingerprint, mobile app, key fob, and keypad passcode entry.

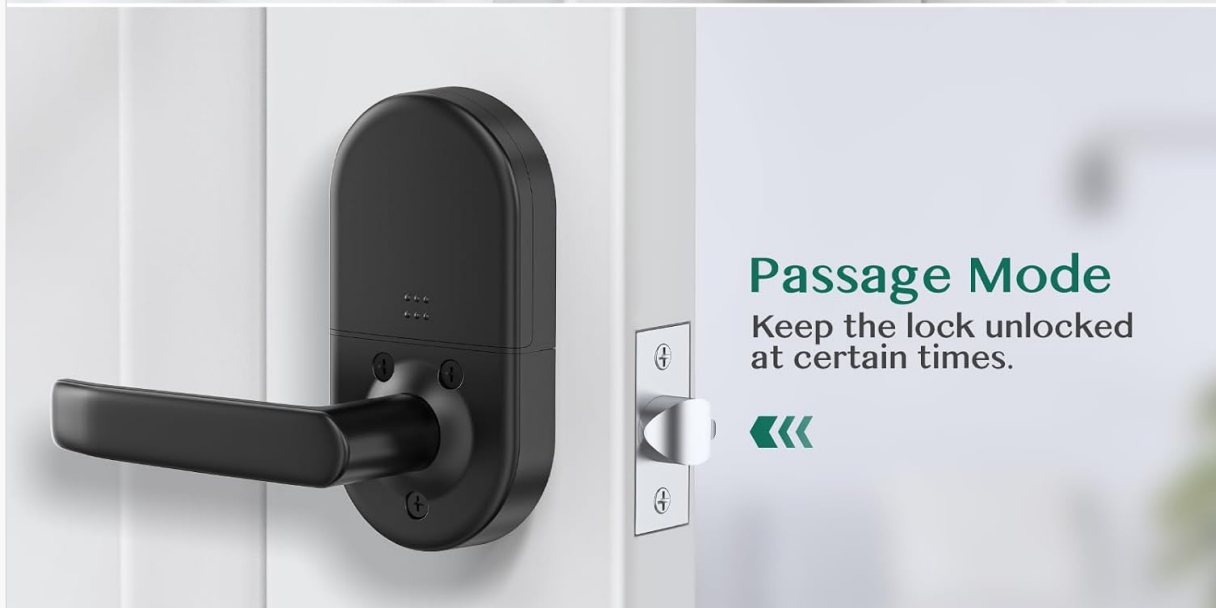


Image: A close-up view of the smart lock's fingerprint sensor, emphasizing its rapid 0.3-second unlock time and the presence of an upgraded data encryption chip for enhanced security.



Image: This diagram explains the color-coded light indicators on the smart lock: Green signifies successful verification, Blue indicates active mode, and Red denotes failed verification.

6.2 App Features and Management

The Yamiry app provides comprehensive control over your smart lock:

- **User Management:** Add or remove users, and assign specific unlocking methods (fingerprint, passcode, key fob) to each.
- **Remote Passcode Generation:** Generate one-time or temporary passcodes for visitors or service providers, even when you are away from home.
- **Access Log History:** View a detailed record of all lock and unlock events, including the method used and the timestamp.
- **Auto-Lock:** Configure the lock to automatically re-lock after a set period (e.g., 5 to 99 seconds) after being unlocked.
- **Passage Mode:** Temporarily disable auto-lock to keep the door unlocked for extended periods, useful for gatherings or moving items.

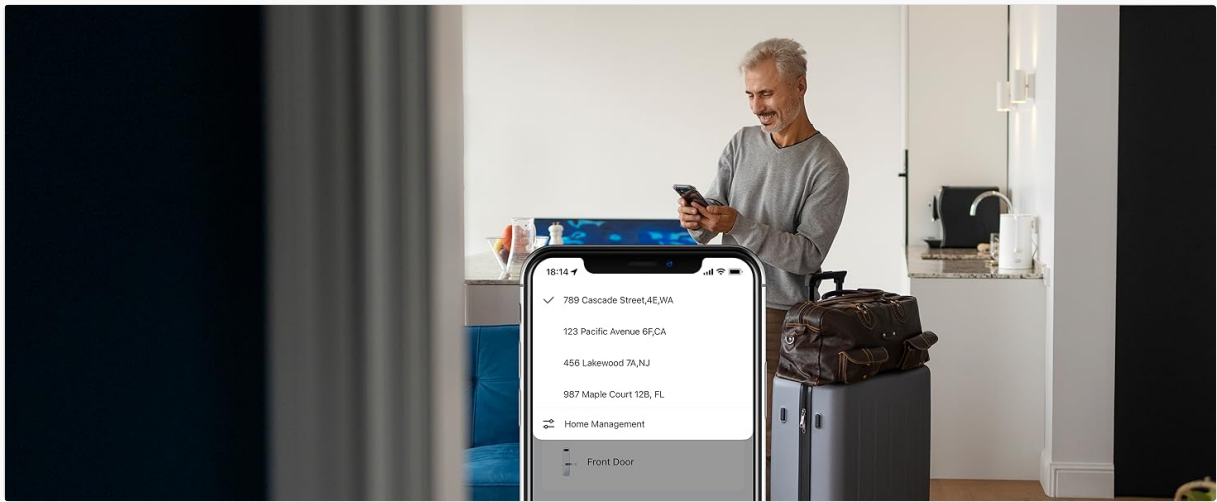


Image: The Yamiry app's user management screen, displaying a list of registered family members and their assigned access permissions for the smart lock.

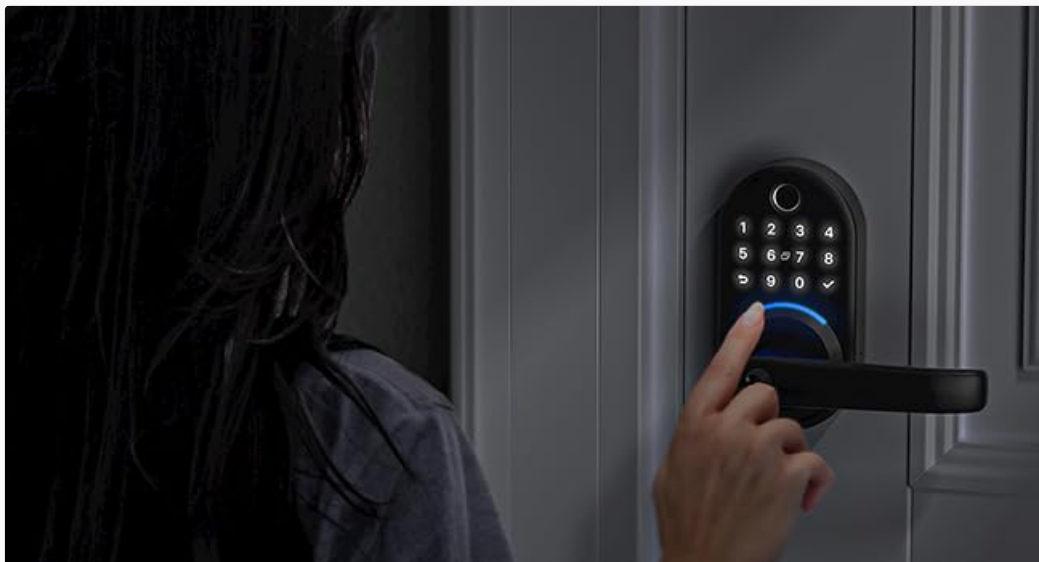


Image: The app interface for generating temporary passcodes, allowing users to create one-time or custom passcodes for guests or service personnel.

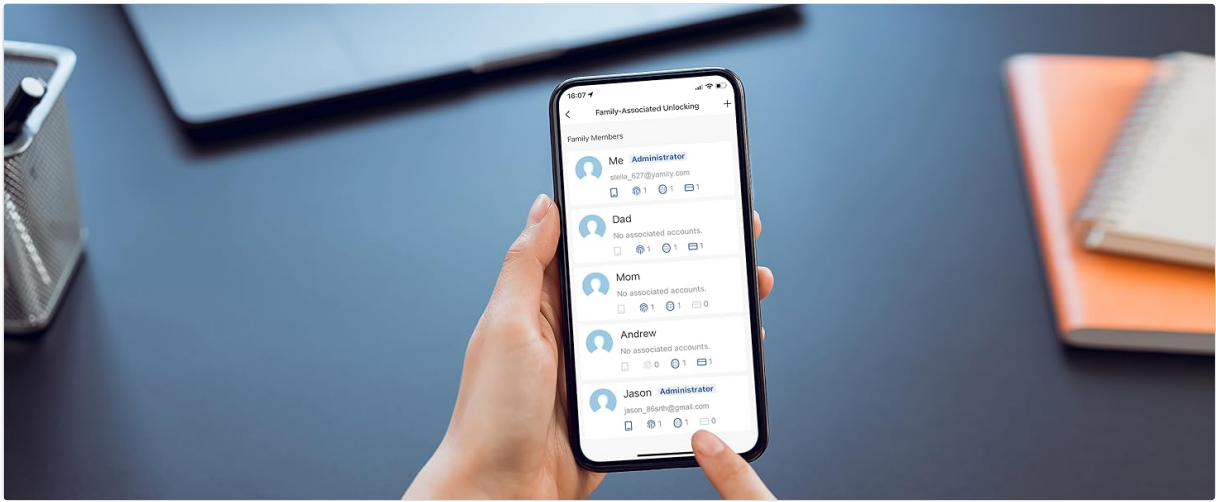


Image: A screenshot of the app's log history, displaying a chronological record of all lock and unlock activities, including the user and method of entry.

YAMIRY Easy installation in 10 minutes



Reversible Handle

- ✓ Left-handed Doors
- ✓ Right-handed Doors

Image: This image illustrates the auto-lock function, which can be set to re-lock the door within 5 to 99 seconds, and the passage mode, which keeps the door unlocked for convenience.

7. Maintenance

7.1 Battery Replacement

The lock requires Lithium Ion batteries (not included). When the battery level is low, the lock will provide an audible or visual alert. To replace batteries:

1. Remove the battery cover on the interior assembly.
2. Carefully remove the old batteries.
3. Insert new Lithium Ion batteries, ensuring correct polarity.
4. Replace the battery cover.

Note: If the batteries are completely dead, you can use a power bank with a USB cable via the USB port on the bottom of the keypad to temporarily power the lock and gain entry.

7.2 Cleaning

To maintain the appearance and functionality of your smart lock:

- Wipe the exterior surfaces with a soft, damp cloth.
- Avoid using abrasive cleaners, solvents, or harsh chemicals, as these can damage the finish and electronic components.
- Keep the fingerprint sensor and keypad clean and free of debris for optimal performance.

8. Troubleshooting

Problem	Possible Cause / Solution
Lock does not respond to input.	Check battery level and replace if necessary. Ensure the lock is properly installed and all cables are connected.
Fingerprint recognition fails frequently.	Ensure your finger is clean and dry. Try re-registering your fingerprint in the app. Ensure proper placement on the sensor.
Keypad does not light up or respond.	Press any key to activate the keypad. Check battery level.
Cannot connect to the lock via Bluetooth/App.	Ensure Bluetooth is enabled on your phone. Be within close proximity to the lock. Restart the app and/or your phone. If using a WiFi gateway, ensure it is properly configured and connected to your network.
Auto-lock feature not working as expected.	Verify auto-lock settings in the app. Ensure the door sensor (if applicable) is clean and unobstructed.
Lock is making unusual noises.	Check for any obstructions in the door frame or latch mechanism. Ensure the lock is securely mounted and not loose.

9. Warranty and Support

For warranty information and technical support, please refer to the official Yamiry website or contact Yamiry customer service directly. Keep your purchase receipt as proof of purchase for any warranty claims.

Contact Information: Please visit the Yamiry official website or refer to the contact details provided in

your product packaging for the most up-to-date support information.

© 2024 Yamiry. All rights reserved.