

WITLIGHT ZS881829L

WITLIGHT Mini Circular Saw ZS881829L Instruction Manual

Model: ZS881829L | Brand: WITLIGHT

1. IMPORTANT SAFETY INFORMATION

Always read and understand all safety warnings, instructions, illustrations, and specifications provided with this power tool. Failure to follow all instructions listed below may result in electric shock, fire, and/or serious injury.

- **Work Area Safety:** Keep your work area clean and well-lit. Cluttered or dark areas invite accidents. Do not operate power tools in explosive atmospheres, such as in the presence of flammable liquids, gases, or dust.
- **Electrical Safety:** Power tool plugs must match the outlet. Never modify the plug in any way. Do not expose power tools to rain or wet conditions.
- **Personal Safety:** Stay alert, watch what you are doing, and use common sense when operating a power tool. Do not use a power tool while you are tired or under the influence of drugs, alcohol, or medication. Always wear appropriate personal protective equipment, including eye protection, dust mask, non-skid safety shoes, hard hat, or hearing protection.
- **Power Tool Use and Care:** Do not force the power tool. Use the correct power tool for your application. Disconnect the battery pack from the power tool before making any adjustments, changing accessories, or storing power tools.
- **Service:** Have your power tool serviced by a qualified repair person using only identical replacement parts. This will ensure that the safety of the power tool is maintained.

2. PRODUCT OVERVIEW AND COMPONENTS

The WITLIGHT Mini Circular Saw ZS881829L is a compact, cordless tool designed for various cutting tasks.

It is compatible with DeWalt 20V MAX batteries (battery not included).



Figure 2.1: WITLIGHT Mini Circular Saw with various blades and accessories.

Key Components:

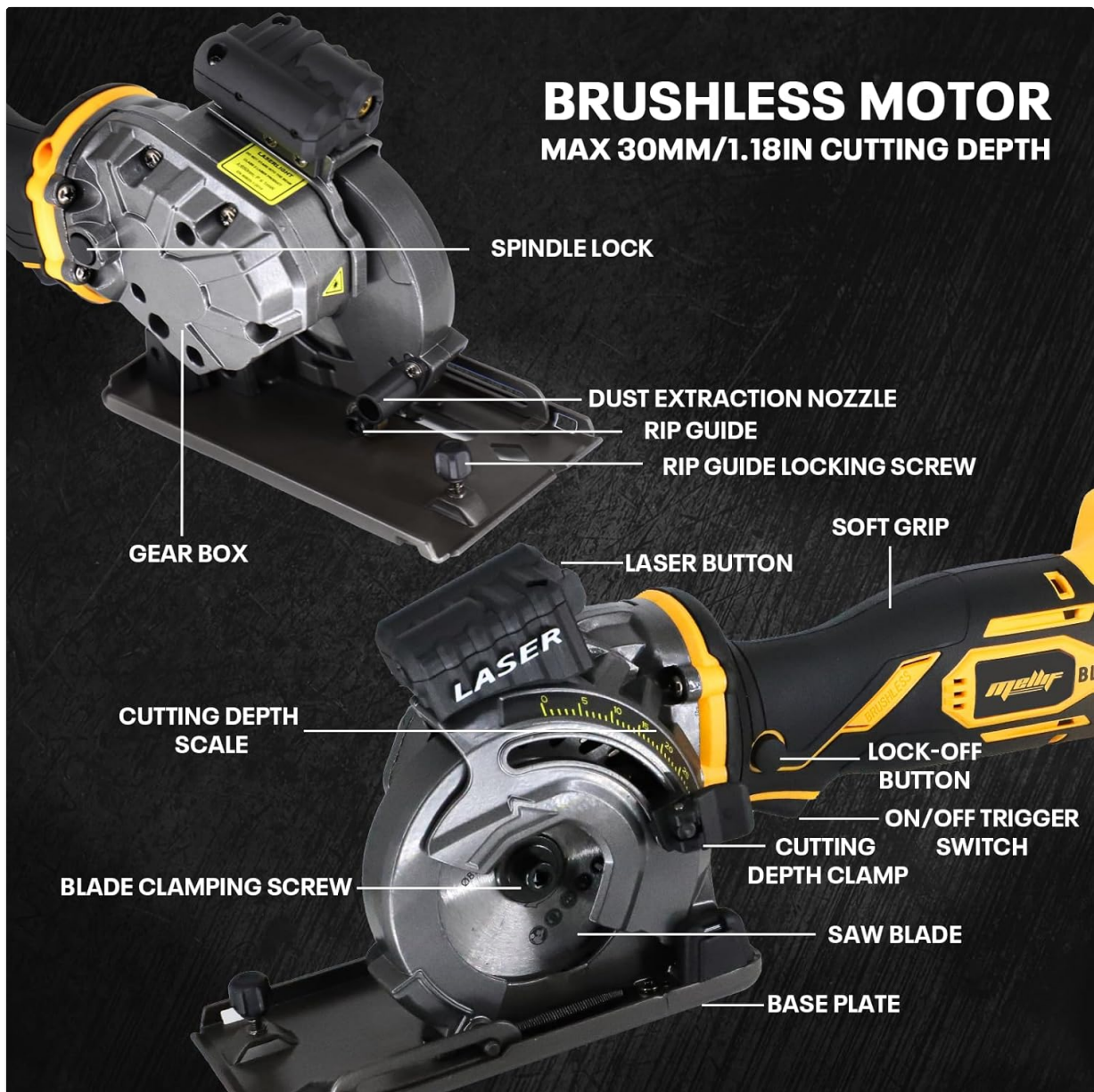


Figure 2.2: Detailed view of the Mini Circular Saw highlighting its main components.

- **Spindle Lock:** Used to secure the blade for installation or removal.
- **Dust Extraction Nozzle:** Connects to a vacuum or dust collection system.
- **Rip Guide:** Assists in making straight cuts.
- **Rip Guide Locking Screw:** Secures the rip guide in place.
- **Soft Grip:** Ergonomic handle for comfortable operation.
- **Laser Button:** Activates the laser guide for precise cutting.
- **Cutting Depth Scale:** Indicates the current cutting depth.
- **Lock-Off Button:** Safety feature to prevent accidental startup.
- **On/Off Trigger Switch:** Activates the saw.
- **Saw Blade:** The cutting accessory.
- **Cutting Depth Clamp:** Secures the desired cutting depth.
- **Base Plate:** Provides stability and guides the saw during cuts.
- **Blade Clamping Screw:** Secures the blade to the spindle.

Included Blades:



Figure 2.3: The three types of blades provided for various materials.

- **24T (89mm) TCT Blade:** For cutting wood.
- **44T (89mm) HSS Blade:** For cutting plastic and thin metal.
- **(89mm) Diamond Blade:** For cutting tile and drywall.

3. SETUP

3.1 Battery Installation

This cordless circular saw is compatible with all DeWalt 20V MAX batteries. Ensure the battery is fully charged before use. To install, align the battery with the base of the tool and slide it in until it clicks securely into place. To remove, press the battery release button and slide the battery out.

3.2 Blade Installation and Removal

Always ensure the battery is removed from the tool before changing blades.

Your browser does not support the video tag.

Video 3.1: Demonstrates the installation process for the saw blade and guard.

STEPS FOR REPLACING BLADE

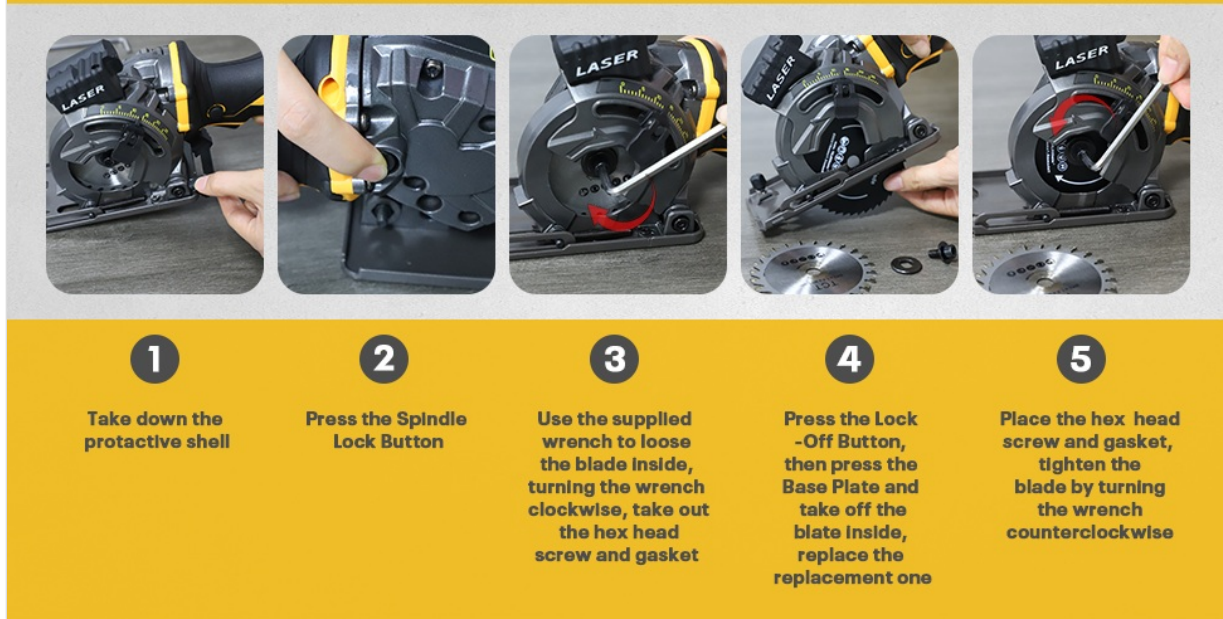


Figure 3.1: Visual guide for replacing the saw blade.

1. Remove the protective shell.
2. Press the Spindle Lock Button to prevent the blade from rotating.
3. Use the supplied hex wrench to loosen the blade clamping screw by turning it clockwise. Remove the screw and gasket.
4. Remove the old blade.
5. Place the new blade onto the spindle, ensuring the teeth are oriented correctly for the desired cutting direction.
6. Replace the gasket and blade clamping screw. Tighten the screw by turning it counterclockwise using the hex wrench while holding the spindle lock button.

3.3 Guard and Dust Extraction Nozzle Attachment

The saw includes a removable dust shroud with a dust extraction nozzle for a cleaner work environment.



Figure 3.2: The dust extraction nozzle helps maintain a clean workspace.

To attach the dust shroud, slide it over the saw's blade housing until it locks into place. The dust extraction nozzle can then be connected to a vacuum or dust collection system using the provided adapter hose.

3.4 Adjusting Cutting Depth

The cutting depth can be adjusted from 0-30mm (1.18 inches) to suit various materials and tasks.



Figure 3.3: Follow these steps to adjust the cutting depth accurately.

1. Release the cutting depth clamp button.
2. Adjust the base plate to the desired depth using the cutting depth scale.
3. Lock the cutting depth clamp button to secure the setting.

4. OPERATING INSTRUCTIONS

4.1 Powering On/Off

To start the saw, first press the Lock-Off button (safety button) and then press the On/Off Trigger Switch. Release the trigger switch to turn off the saw.

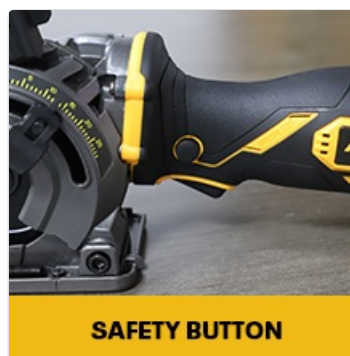


Figure 4.1: The safety button must be pressed before activating the trigger.

4.2 Using the Laser Guide and Scale Ruler

The integrated laser guide and scale ruler ensure precise and straight cuts.

MORE PRECISE CUTTING WITH LASER GUIDE & SCALE RULER



Figure 4.2: The laser guide projects a line for accurate cutting alignment.

- Press the Laser Button to activate the laser line, which will guide your cut.
- Utilize the scale ruler for consistent and repeatable cutting measurements.

4.3 Multi-Material Cutting

The saw is designed for cutting various materials when equipped with the appropriate blade.

MULTI-MATERIAL CUTTING



Figure 4.3: The saw can cut wood, plastic, soft metal, and ceramic tile with the correct blade.

- **Wood:** Use the 24T TCT blade.
- **Plastic/Thin Metal:** Use the 44T HSS blade.
- **Tile/Drywall:** Use the Diamond blade.

Always ensure the material is securely clamped before cutting. Apply steady, even pressure and allow the blade to do the work. Avoid forcing the saw, which can lead to kickback or damage to the tool.

Your browser does not support the video tag.

Video 4.1: Overview of the brushless cordless circular saw in action, demonstrating its features and cutting capabilities.

Your browser does not support the video tag.

Video 4.2: Demonstrates the 97630-20V 3400 RPM Cordless Circular Saw with Laser Guide, showcasing its use and features.

5. MAINTENANCE

Regular maintenance ensures the longevity and optimal performance of your circular saw.

- **Cleaning:** After each use, clean the tool with a soft, dry cloth. Remove any dust or debris from the

ventilation openings and around the blade area. Do not use water or chemical cleaners.

- **Blade Care:** Inspect blades for wear, damage, or dullness. Replace worn or damaged blades immediately. Keep blades sharp for efficient and safe cutting.
- **Storage:** Store the tool in a dry, secure place out of reach of children. Remove the battery pack when storing the tool for extended periods.

6. TROUBLESHOOTING

- **Saw does not start:** Ensure the battery is fully charged and properly installed. Check that the Lock-Off button is pressed before the trigger switch.
- **Poor cutting performance:** The blade may be dull, damaged, or incorrect for the material. Replace the blade if necessary. Ensure the cutting depth is set correctly.
- **Excessive vibration:** Check if the blade is properly installed and tightened. Ensure the blade is not bent or damaged.

7. SPECIFICATIONS

Feature	Specification
Model Number	ZS881829L
Brand	WITLIGHT
Power Source	Battery Powered (Compatible with DeWalt 20V MAX)
Speed	3200 RPM
Blade Length	3-1/2 inches (89mm)
Max Cutting Depth	1-2/11 inches (30mm)
Item Weight	1.8 kg
Special Features	Brushless, Depth Adjustment, Lightweight, Laser Guide
Included Components	Mini Circular Saw, 24T TCT Blade, 44T HSS Blade, Diamond Blade, Vacuum Adapter Hose, Hex Wrench, User Manual

8. WARRANTY AND SUPPORT

This product comes with a 12-month warranty. If you encounter any problems with your WITLIGHT Mini Circular Saw, please contact customer support for assistance. Provide your model number (ZS881829L) and purchase details when contacting support.



Figure 8.1: The package includes the saw, three blades, vacuum adapter, hex wrench, and user manual.

