

[Manuals.plus](#) /

> [Areyourshop](#) /

> Areyourshop Engine Cylinder Head for 250cc Zongshen CG250 ZS250 167FMM Water Cooled Engines

Areyourshop M587-A100~PMS001AMZUS

Areyourshop Engine Cylinder Head Instruction Manual

Model: M587-A100~PMS001AMZUS

1. INTRODUCTION

This manual provides essential information for the proper installation, operation, and maintenance of your Areyourshop Engine Cylinder Head. This component is designed as a replacement part for specific 250cc water-cooled engines. Please read this manual thoroughly before attempting any installation or service.

2. SAFETY INFORMATION

Warning: Engine work can be hazardous. Always wear appropriate personal protective equipment, including safety glasses and gloves. Ensure the engine is cool and disconnected from its power source before beginning any work. Improper installation can lead to engine damage, personal injury, or property damage. If you are not confident in your mechanical abilities, seek assistance from a qualified professional.

- Always refer to your vehicle's specific service manual for detailed engine disassembly and assembly procedures.
- Ensure all fasteners are torqued to manufacturer specifications.
- Handle engine components with care to prevent damage.

3. COMPATIBILITY

This cylinder head is specifically designed for the following engine and vehicle types:

- **Engine Type:** CG250 Water cooled VERTICAL Engine, 4-stroke 167FMM engines.
- **Displacement:** 250cc.
- **Cylinder Bore:** 67mm.
- **Compatible Vehicles:** 4-wheeler ATVs, Dune Buggies, Dirt Bikes, Pit Bikes, Off-Road Motorcycles, Go-Karts, Quads.

Important Note: This cylinder head will **NOT** work with CN250 cloned 250cc engine powered scooters and go-karts. Please verify your engine model and specifications before purchase and installation.

4. PACKAGE CONTENTS

Upon opening the package, please ensure all components are present and undamaged:

- 1x Areyourshop 250cc Water Cooled Cylinder Head (complete with valves and springs as shown in product images)

5. SPECIFICATIONS

Specification	Value
Brand	Areyourshop
Model Number	M587-A100~PMS001AMZUS
Material	Aluminum
Displacement	250cc
Bore Type	For 67mm cylinder bore
Cooling System	Water cooled
Item Weight	5.94 pounds
Product Dimensions	9.06 x 8.27 x 7.09 inches

6. SETUP AND INSTALLATION

Installation of an engine cylinder head requires mechanical knowledge and specialized tools. It is highly recommended that installation be performed by a certified mechanic or an experienced individual. The following steps are a general guide and should be supplemented by your vehicle's specific service manual.

1. **Preparation:** Ensure the engine is completely cool. Disconnect the battery. Drain the coolant and oil.
2. **Disassembly:** Remove all components obstructing access to the cylinder head, including the fuel tank, carburetor/throttle body, exhaust system, and valve cover. Carefully disconnect all hoses, wires, and cables attached to the cylinder head.
3. **Remove Old Cylinder Head:** Loosen and remove the cylinder head bolts in the reverse order specified by your service manual to prevent warping. Carefully lift the old cylinder head off the engine block.
4. **Clean Surfaces:** Thoroughly clean the cylinder block surface and the new cylinder head mating surface. Remove all old gasket material and ensure surfaces are free of debris.
5. **Install New Gasket:** Place a new cylinder head gasket onto the cylinder block, ensuring correct orientation.
6. **Position New Cylinder Head:** Carefully lower the new Areyourshop cylinder head onto the cylinder block, aligning it with the dowel pins.
7. **Install Cylinder Head Bolts:** Apply thread sealant or lubricant to the cylinder head bolts as recommended by your service manual. Install the bolts and tighten them finger-tight.
8. **Torque Bolts:** Follow the specific torque sequence and specifications provided in your vehicle's service manual. This typically involves multiple stages of tightening to achieve the correct clamping force and prevent warping.
9. **Reassembly:** Reinstall all removed components, hoses, wires, and cables. Refill coolant and engine oil to the correct levels.
10. **Initial Start-up:** After reassembly, perform an initial start-up and check for leaks. Monitor engine temperature and performance.



Image 6.1: Top-down view of the cylinder head, highlighting valve springs.



Image 6.2: Angled view of the cylinder head, showing internal components.

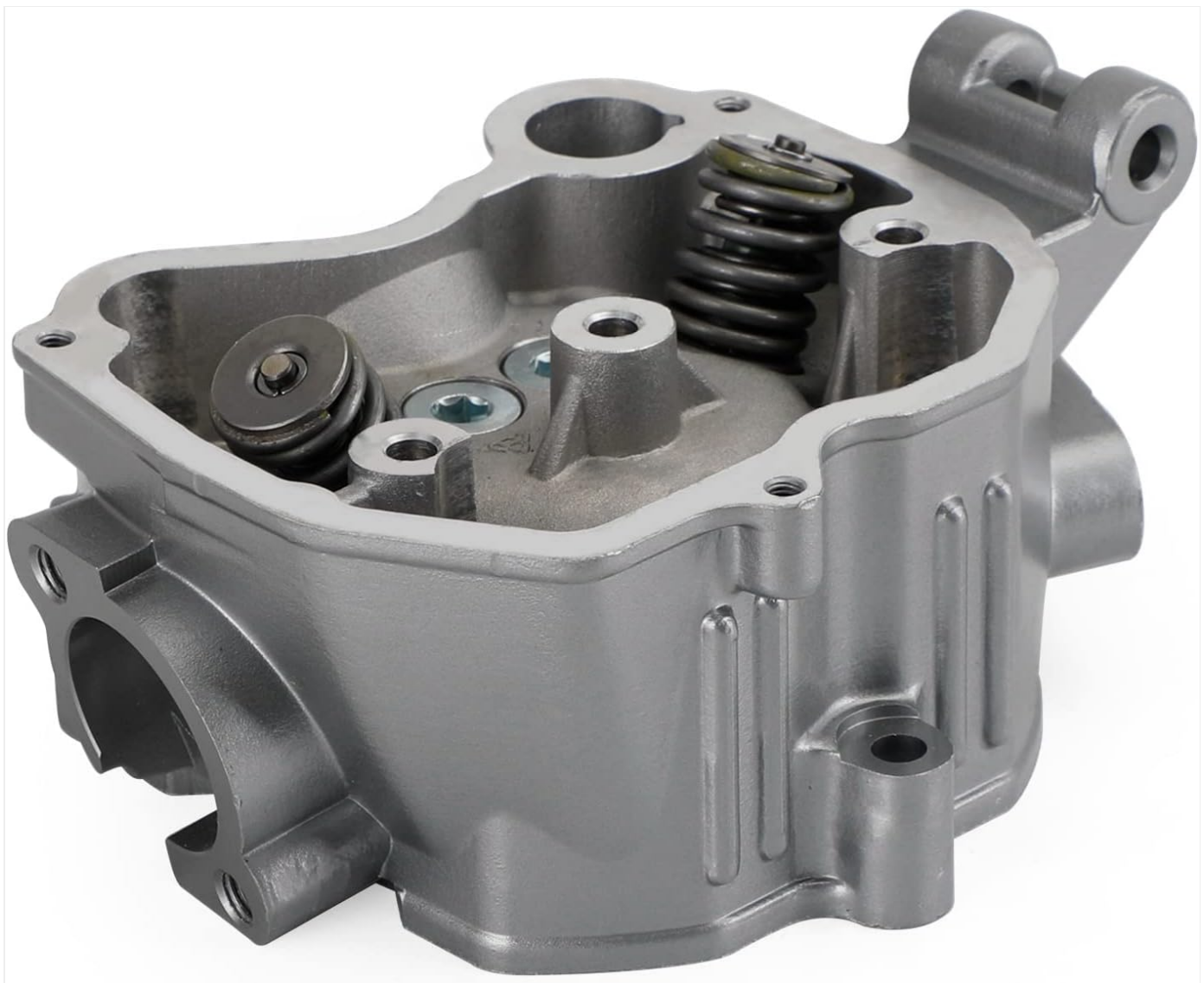


Image 6.3: Alternative angled view of the cylinder head.

7. OPERATING CONSIDERATIONS

Once the cylinder head is installed and the engine is reassembled, proper operating procedures are crucial for longevity and performance.

- **Break-in Period:** Follow your engine manufacturer's recommendations for a break-in period after major engine work. This typically involves avoiding high RPMs and heavy loads for a specified duration.
- **Fluid Levels:** Regularly check engine oil and coolant levels, especially after initial operation.
- **Temperature Monitoring:** Pay attention to engine temperature during operation. Overheating can indicate issues with the cooling system or improper installation.

8. MAINTENANCE

Regular maintenance is essential for the optimal performance and lifespan of your engine and its components, including the cylinder head.

- **Coolant System:** Maintain proper coolant levels and ensure the cooling system is free of leaks and blockages. Flush and replace coolant according to your vehicle's service schedule.
- **Oil Changes:** Perform regular oil changes with the recommended type and viscosity of engine oil. Clean oil is vital for lubricating valve train components.

- **Valve Clearance:** Periodically check and adjust valve clearances as specified in your engine's service manual. Incorrect valve clearance can lead to poor performance or damage.
- **Spark Plug Inspection:** Inspect and replace spark plugs as part of routine maintenance.



Image 8.1: Top view of the cylinder head, showing valve springs and bolts.



Image 8.2: Angled view of the cylinder head from the other side.

9. TROUBLESHOOTING

If you encounter issues after installing the cylinder head, consider the following common problems and potential solutions:

- **Engine Overheating:**

- Check coolant level and ensure no air pockets are trapped in the cooling system.
- Inspect for coolant leaks around the cylinder head gasket.
- Verify proper function of the thermostat and water pump.

- **Coolant/Oil Leaks:**

- Re-check cylinder head bolt torque.
- Inspect the cylinder head gasket for proper seating and damage.
- Ensure all coolant hoses and connections are secure.

- **Loss of Power/Poor Performance:**

- Verify correct valve timing and valve clearances.
- Check for proper compression in each cylinder.
- Ensure spark plugs are correctly installed and firing.

- **Unusual Engine Noises:**

- Could indicate incorrect valve clearance or other valve train issues.
- Consult a professional mechanic for diagnosis.

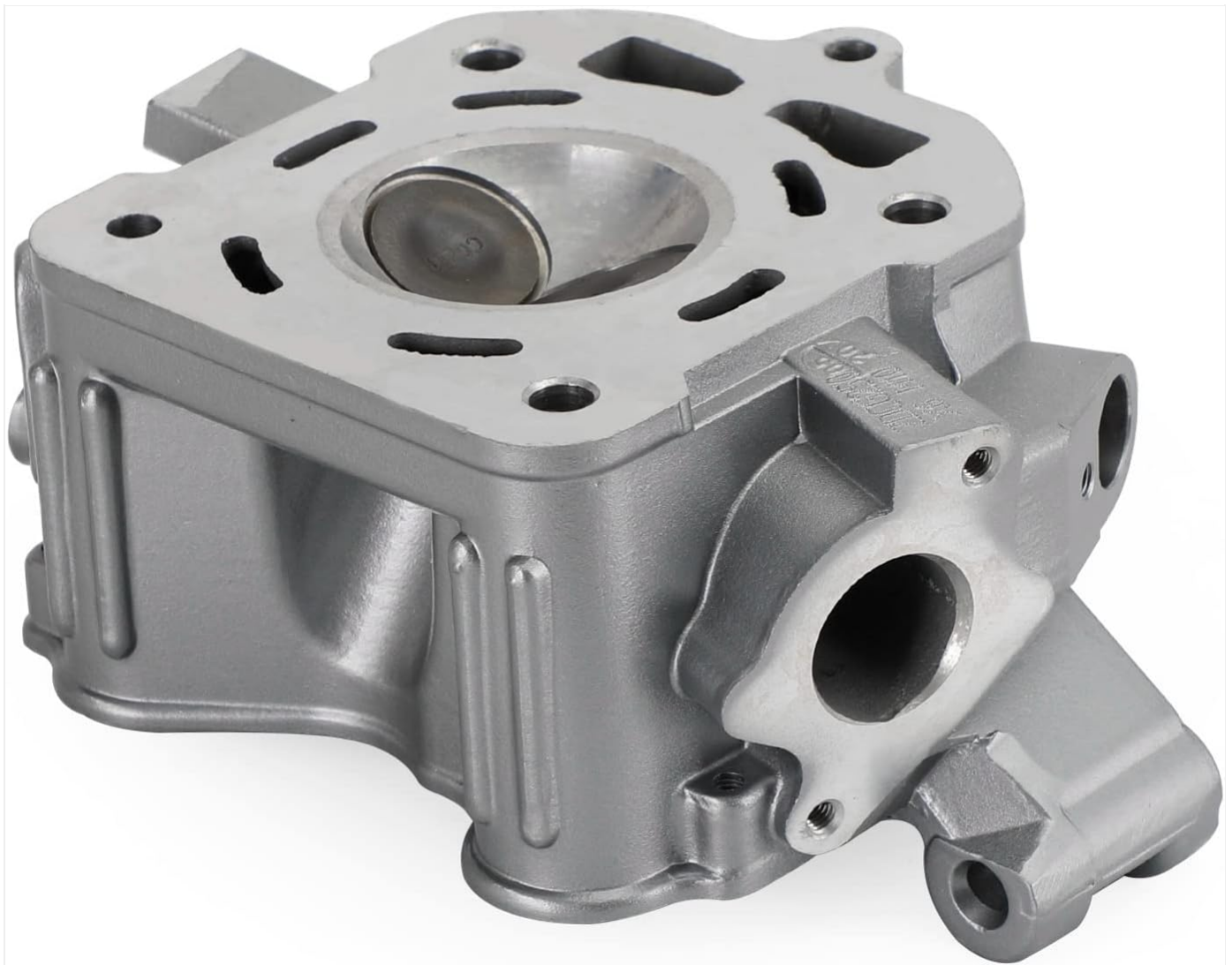


Image 9.1: Bottom view of the cylinder head, showing the combustion chamber.



Image 9.2: Angled bottom view of the cylinder head.



Image 9.3: Close-up of the combustion chamber and valve faces.

10. WARRANTY INFORMATION

For specific warranty terms and conditions, please refer to the warranty policy provided by Areyourshop at the time of purchase or visit the official Areyourshop website. Keep your proof of purchase for any warranty claims.

11. CUSTOMER SUPPORT

If you have any questions regarding the installation, operation, or maintenance of your Areyourshop Engine Cylinder Head, please contact Areyourshop customer service through their official channels. Provide your product model number (M587-A100~PMS001AMZUS) and details of your inquiry for efficient assistance.

