

## Decdeal AH-SL-001

# Decdeal Steam Cleaner AH-SL-001 Instruction Manual

Model: AH-SL-001

## 1. PRODUCT OVERVIEW

The Decdeal Steam Cleaner is a high-temperature, pressurized handheld cleaning machine designed for effective removal of stubborn dirt and stains across various surfaces. Its compact size and versatile attachments make it suitable for use in kitchens, bathrooms, on furniture, car interiors, and windows.

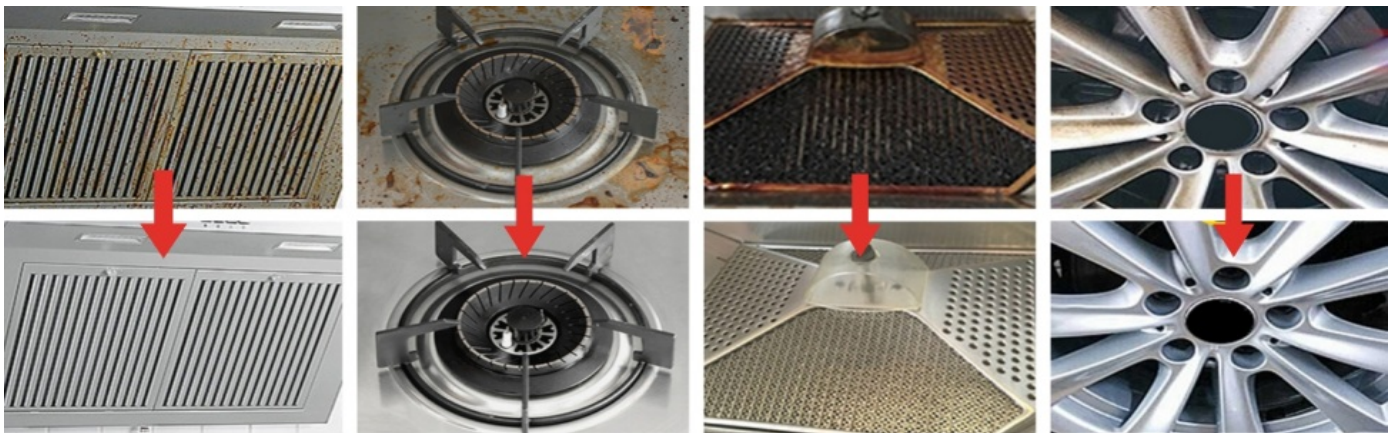


Image 1.1: Overview of the Decdeal Steam Cleaner and its included accessories.

## 2. KEY FEATURES

- **High Temperature & Pressure Steam:** Generates 229°F (105°C) high-temperature and 3 BAR pressure steam within 10 seconds for effective cleaning.
- **6 Speeds Adjustable:** Allows for varying steam output to suit different cleaning tasks and surfaces.
- **Versatile Attachments:** Includes 3 different brush heads (steel, small hair, big hair) and an extended rod for diverse cleaning applications.
- **Large Capacity Water Tank:** 0.5-liter tank (approximately 1000ml) provides continuous steam for about 1 hour, reducing the need for frequent refills.
- **Extended Reach:** Features a 2.2-meter-long steam tube and long power cable for convenient use and freedom of movement.
- **Compact and Portable:** Mini size (19 x 15 x 13 cm / 7.4 x 5.9 x 5.1 inches) and lightweight design for easy storage and handling.

## 8 WAYS TO COMBINE FREELY



When changing nozzle or extended rod, make sure the leak-proof gasket is in place to avoid leaks.



Image 2.1: Visual representation of the steam cleaner's core features.

### 3. SAFETY INFORMATION

- Always read all instructions before using the appliance.
- Keep the appliance out of reach of children and pets.
- Do not direct steam at people, animals, or electrical appliances. Steam is extremely hot and can cause burns.
- Use only distilled or demineralized water to prevent mineral buildup and extend the life of the appliance.
- Never open the water tank cap while the unit is pressurized or hot.
- Ensure the power cord is not damaged and is properly plugged into a grounded outlet.
- Unplug the appliance from the power outlet before filling, cleaning, or performing maintenance.
- Wear appropriate protective gear, such as gloves, when operating the steam cleaner.

### 4. PACKAGE CONTENTS

Verify that all items are present in the package:

- Decdeal Steam Cleaner Main Unit
- Handheld Sprayer
- Extended Sprayer Rod
- Steel Brush Head
- Small Hair Brush Head
- Big Hair Brush Head
- Gloves
- Power Cable

### 5. SETUP

1. **Fill Water Tank:** Unscrew the water tank cap. Carefully pour distilled or demineralized water into the tank. The tank has a capacity of 0.5 liters (1000ml). Do not overfill. Securely close the water tank cap.
2. **Attach Accessories:** Select the appropriate brush head or extended rod for your cleaning task. Attach it firmly to the handheld sprayer. Ensure the leak-proof gasket is properly in place to prevent leaks when changing nozzles or the extended rod.
3. **Connect Power:** Plug the power cable into the steam cleaner and then into a grounded electrical outlet.
4. **Power On:** Flip the power switch to the 'ON' position. The indicator light will illuminate, signaling that the unit is heating up.

Your browser does not support the video tag.

Video 5.1: Demonstrates the initial setup process, including filling the water tank and powering on the device.



Image 5.1: The visible water tank with capacity markings.

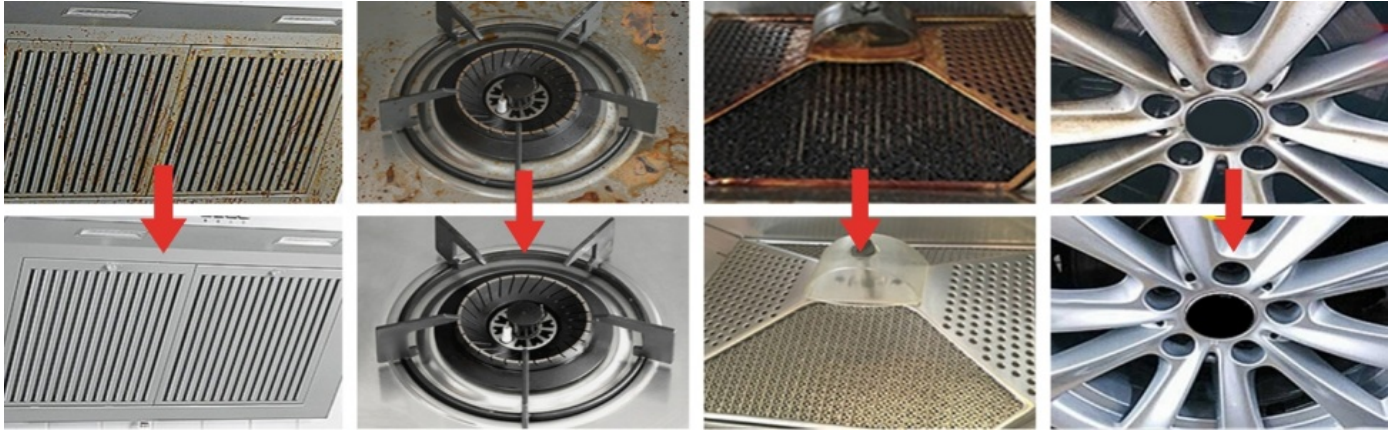


Image 5.2: Proper attachment of accessories with the leak-proof gasket.

## 6. OPERATING INSTRUCTIONS

1. **Heating:** The steam cleaner will heat up within approximately 10 seconds. The indicator light will change or turn off once the optimal temperature and pressure are reached.
2. **Adjust Steam Output:** Use the speed adjustment knob on the top of the unit to select one of the 6 available steam output levels (e.g., Low Humidity, Medium Humidity, High Humidity) based on the cleaning requirement.
3. **Apply Steam:** Direct the nozzle towards the surface to be cleaned. For best results, keep the sprayer head close to the surface. The temperature and pressure decrease with distance from the nozzle.
4. **Cleaning Technique:** Move the nozzle slowly over the soiled area. For stubborn stains, use the appropriate brush head and apply gentle scrubbing while steaming.
5. **Using Detergents:** For enhanced cleaning, especially on tough stains, you may mix alkaline detergent, baking soda, or disinfectant liquid with the water in the tank. Refer to the detergent manufacturer's instructions for proper dilution.
6. **Post-Cleaning:** After cleaning, wipe the steamed surface with a clean cloth to remove loosened dirt and moisture.



Image 6.1: Steam cleaner in action on a kitchen surface.



Image 6.2: Illustration of steam temperature and pressure characteristics.

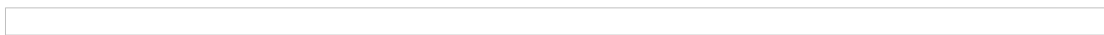


Image 6.3: Steam output adjustment settings.



Image 6.4: Recommended cleaning agents for use with the steam cleaner.

## 7. MAINTENANCE

1. **Empty Water Tank:** After each use, ensure the unit has cooled down completely and is unplugged. Carefully open the water tank cap and drain any remaining water.
2. **Clean Accessories:** Rinse brush heads and other attachments with clean water. Allow them to air dry completely before storing.
3. **Wipe Down Unit:** Wipe the exterior of the steam cleaner with a damp cloth. Do not immerse the unit in water.
4. **Descaling (Periodically):** If you notice reduced steam output or mineral buildup, descale the unit. Consult a qualified technician or refer to specific descaling instructions if provided by the manufacturer.

5. **Storage:** Store the steam cleaner and its accessories in a cool, dry place, away from direct sunlight and extreme temperatures.

## 8. TROUBLESHOOTING

Problem	Possible Cause	Solution
No steam or low steam output	Water tank empty; Unit not heated sufficiently; Mineral buildup; Steam nozzle clogged.	Refill water tank; Allow more time for heating (approx. 10 seconds); Descale the unit; Clean the steam nozzle.
Water leaking from connections	Attachments not securely fastened; Gasket missing or damaged.	Ensure all attachments are tightened properly; Check and replace gasket if necessary.
Unit not turning on	No power; Power switch off.	Check power outlet and cable connection; Ensure power switch is in the 'ON' position.

## 9. SPECIFICATIONS

Specification	Value
Brand	Decdeal
Model Number	AH-SL-001
Wattage	1500W
Tank Volume	0.5 Liters (1000ml)
Maximum Temperature	229°F (105°C)
Pressure	3 BAR
Product Dimensions	5.1"D x 5.91"W x 7.4"H (19 x 15 x 13 cm)
Item Weight	3.9 pounds
Power Source	Corded Electric
Surface Recommendation	Floors, Walls, Windows, Kitchen, Bathroom, Furniture, Car

## WARM TIPS

The the object surface closer to the nozzle, the higher the temperature, the stronger the pressure, and the more effective the steaming. Mixed the detergent helps remove stains better.



Image 9.1: Product dimensions.

## 10. WARRANTY AND SUPPORT

For warranty information, technical support, or service inquiries, please refer to the contact details provided with your purchase documentation or visit the official Decdeal website. Keep your proof of purchase for warranty claims.

