



Manuals.plus /

› Joy Pebble /

› Joy Pebble Beverage Refrigerator Cooler W58 - 1.3 Cu.Ft User Manual

Joy Pebble W58

Joy Pebble Beverage Refrigerator Cooler - Model W58

User Manual for 1.3 Cu.Ft Mini Fridge with Glass Door

IMPORTANT SAFETY INSTRUCTIONS

To reduce the risk of fire, electric shock, or injury when using your appliance, follow these basic precautions:

- Read all instructions before using the appliance.
- Do not touch cold surfaces, especially when the appliance is operating.
- Ensure proper ventilation. Maintain adequate space around the unit for air circulation.
- Before plugging in, allow the refrigerator to stand upright for at least 24 hours to allow the refrigerant fluid to settle. Failure to do so may cause malfunctions.
- This appliance uses R600a refrigerant, which is flammable. Handle with care and ensure proper ventilation.
- **WARNING:** This product can expose you to chemicals including lead and bisphenol A (BPA), which are known to the State of California to cause cancer and birth defects or other reproductive harm. For more information, go to www.P65Warnings.ca.gov.

PACKAGE CONTENTS

- Joy Pebble Beverage Refrigerator Cooler (Model W58)
- Adjustable Wire Shelf (1)
- Instruction Manual

SETUP GUIDE

1. Unboxing and Initial Placement

Carefully remove the refrigerator from its packaging. Inspect the unit for any damage. Keep the unit upright during unboxing. The unit is protected by styrofoam and plastic film during transit. You may remove the plastic film after final placement.



Image: The Joy Pebble Beverage Refrigerator Cooler, showcasing its compact black design and glass door filled with various beverages.

2. Leveling and Ventilation

Place the refrigerator on a firm, level surface. The unit features adjustable leveling legs to ensure stability. Adjust the legs by rotating them until the refrigerator is stable and level.

Allow adequate space around the unit for proper air circulation. Ensure there is sufficient clearance at the back for heat dissipation from the compressor. This helps in efficient cooling and prevents overheating.



Adjustable Leveling Legs

- hat the cabinet remains level when placed on uneven surfaces, guaranteeing stability during use.

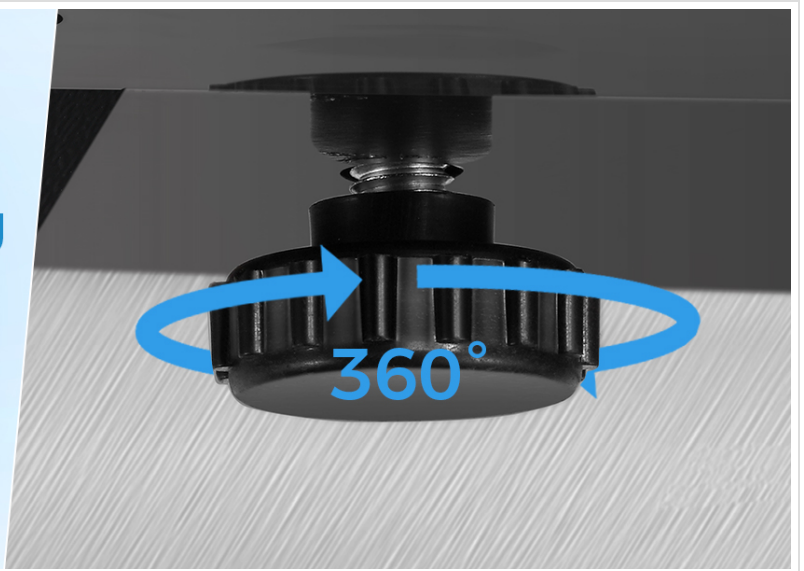


Image: A close-up diagram illustrating the adjustable leveling legs at the bottom of the refrigerator, allowing for stable placement on uneven surfaces.

3. Refrigerant Settling Period

IMPORTANT: After placing the refrigerator in its desired location, allow it to stand upright for at least 24 hours before plugging it into a power outlet. This allows the refrigerant fluid to settle, which is crucial for optimal performance and longevity of the compressor.

4. Door Hinge Reversal (Optional)

The door hinge can be reversed to open from the left or right, depending on your space requirements. Refer to the detailed instructions in the included manual for the reversal procedure.

OPERATING INSTRUCTIONS

1. Powering On and Initial Cooling

After the 24-hour settling period, plug the refrigerator into a standard 115V power outlet. The unit will begin cooling. It may take several hours for the internal temperature to reach the set point, especially during the first use or after loading new items.

2. Temperature Control

The refrigerator features a digital touch temperature control panel located at the top of the interior. You can adjust the temperature between 40°F (4°C) and 61°F (16°C) to suit your preferences for different beverages.

- Use the + and - buttons to increase or decrease the temperature setting.
- The digital display will show the current internal temperature.



Image: A close-up of the digital temperature control panel, showing the LED display and touch buttons for adjusting the temperature and controlling the interior light.

3. LED Interior Lighting

The refrigerator is equipped with soft blue LED interior lighting. This light can be turned on or off using the dedicated light button on the control panel.

- Press the **light bulb icon** button to toggle the interior light on or off.



Image: A close-up view of the soft blue LED light strip illuminating the interior of the beverage refrigerator.

4. Adjustable Shelving and Capacity

The refrigerator includes one removable chrome wire shelf. This allows for flexible storage arrangements to accommodate various bottle and can sizes.

- To adjust or remove the shelf, gently lift it and slide it out.
- The unit has a 1.3 Cu.Ft capacity, capable of holding approximately 12 standard wine bottles or 55 standard beverage cans.

Product Detail

All Convenience is in Details



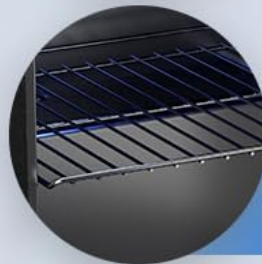
Super
Tight Seal



Adjustable
Leveling Legs



Internal
LED Light



Removable
Shelves

Image: The interior of the refrigerator highlighting the adjustable shelves, internal LED light, super tight seal, and adjustable leveling legs.



Air-Tight Seal

- With its Double glazed door with air tight seal and ensuring that the taste and quality of your fine liquors remain intact



Image: A diagram illustrating the adjustable arcuate shelves designed to securely hold wine bottles and beverage cans, maximizing space utilization.

Official Product Videos

Joy Pebble Beverage Refrigerator Cooler Overview

Your browser does not support the video tag.

Video Description: A comprehensive overview of the Joy Pebble Beverage Refrigerator Cooler, highlighting its features and design.

Review: Great Looking Beverage Fridge

Your browser does not support the video tag.

Video Description: A detailed review showcasing the aesthetic appeal and storage capacity of the beverage refrigerator.

Why This Mini Fridge is a Great Option

Your browser does not support the video tag.

Video Description: A video explaining the benefits and practical uses of the Joy Pebble mini fridge.

Full Review of the Joy Pebble Beverage Refrigerator

Your browser does not support the video tag.

Video Description: An in-depth review covering various aspects of the Joy Pebble Beverage Refrigerator.

Joy Pebble Beverage Refrigerator Capacity and Features

Your browser does not support the video tag.

Video Description: A video detailing the 12-bottle, 48-can capacity and double-paned glass door of the Joy Pebble Beverage Refrigerator.

Attractive Beverage Refrigerator for Various Drinks

Your browser does not support the video tag.

Video Description: A video highlighting the attractive design and suitability of the beverage refrigerator for beer, wine, and soda.

MAINTENANCE

1. Cleaning

- Always unplug the refrigerator before cleaning.
- Clean the interior and exterior surfaces with a soft cloth and mild detergent. Avoid abrasive cleaners or solvents.
- The removable wire shelf can be washed with warm, soapy water. Ensure it is completely dry before placing it back in the unit.
- Regularly wipe down the glass door to maintain clarity.

2. Defrosting

This unit features a frost-free system. However, if excessive frost builds up, manual defrosting may be required.

- Unplug the refrigerator from the power outlet.
- Remove all contents and the adjustable shelf.
- Leave the door open to allow frost to melt naturally. The melted water will collect in a drip tray located at the bottom of the unit, which is designed to evaporate automatically.
- Once defrosted, clean and dry the interior thoroughly before plugging the unit back in.

TROUBLESHOOTING

Problem	Possible Cause	Solution
Refrigerator does not operate.	Unit is not plugged in; Power outage; Circuit breaker tripped.	Ensure the power plug is securely inserted; Check the power supply; Reset the circuit breaker.
Temperature is not cold enough.	Temperature setting is too high; Door is opened too frequently; Poor ventilation; Excessive items loaded.	Lower the temperature setting; Minimize door openings; Ensure adequate space for air circulation; Avoid overloading the unit.
Unusual noise.	Unit is not level; Objects touching the back of the unit; Normal compressor operation.	Adjust leveling legs; Ensure nothing is touching the unit; A slight humming sound from the compressor is normal.
Chemical smell inside.	New unit smell; Residue from manufacturing.	Clean the interior thoroughly with mild soap and water; Leave the door open for a few hours to air out. Repeat if necessary.

SPECIFICATIONS

Brand	Joy Pebble
Model Info	W58
Capacity	1.3 Cubic Feet
Item Weight	32 pounds
Product Dimensions (D x W x H)	16.93 x 16.34 x 18.5 inches
Voltage	115 Volts
Annual Energy Consumption	150 Kilowatt Hours Per Year
Defrost System	Frost Free
Special Feature	Digital Temperature Control
Door Material Type	Glass
Shelves	1 (Adjustable)

WARRANTY AND SUPPORT

For warranty information or technical support, please refer to the contact details provided in your product packaging or visit the official Joy Pebble website. If you encounter any issues not covered in this manual, please contact customer service for assistance.