



[Manuals.plus](#) /

> [KEMEI](#) /

> KEMEI km-3208 Electric Body Trimmer User Manual

KEMEI km-3208

KEMEI km-3208 Electric Body Trimmer User Manual

Model: km-3208

INTRODUCTION

The KEMEI km-3208 Electric Body Trimmer is specifically designed for men's grooming needs, offering a versatile solution for trimming hair across various body areas including the groin, pubic region, chest, back, and more. Equipped with advanced self-sharpening ceramic blades, this trimmer ensures a smooth and comfortable experience without pulling hair. Its ergonomic design and powerful motor contribute to maintaining personal hygiene and confidence.

IMPORTANT SAFETY INFORMATION

Please read all safety instructions carefully before use.

- Do not use the trimmer near heat sources or water.
- Keep the device away from water sources while charging.
- Do not immerse the device in water.
- Do not use the trimmer while it is charging.

PACKAGE CONTENTS

Upon unboxing your KEMEI km-3208 Electric Body Trimmer, please ensure all the following items are present:

- KEMEI km-3208 Electric Body Trimmer
- 3mm Guide Comb
- 9mm Guide Comb
- USB Charging Cable
- Charging Base
- Cleaning Brush
- Lubricating Oil Bottle



Image: The KEMEI km-3208 Electric Body Trimmer shown with its complete set of accessories, including guide combs, USB charging cable, charging base, cleaning brush, and lubricating oil.

PRODUCT FEATURES

- **High-Quality Ceramic Blades:** The trimmer features advanced self-sharpening ceramic blades designed for durability and to prevent skin irritation. It comes with two guide combs (3mm and 9mm) for precise trimming of groin, pubic, body, and back hair, ensuring a clean and comfortable experience.

Stainless Steel Cutter Head

Body hair trimmer



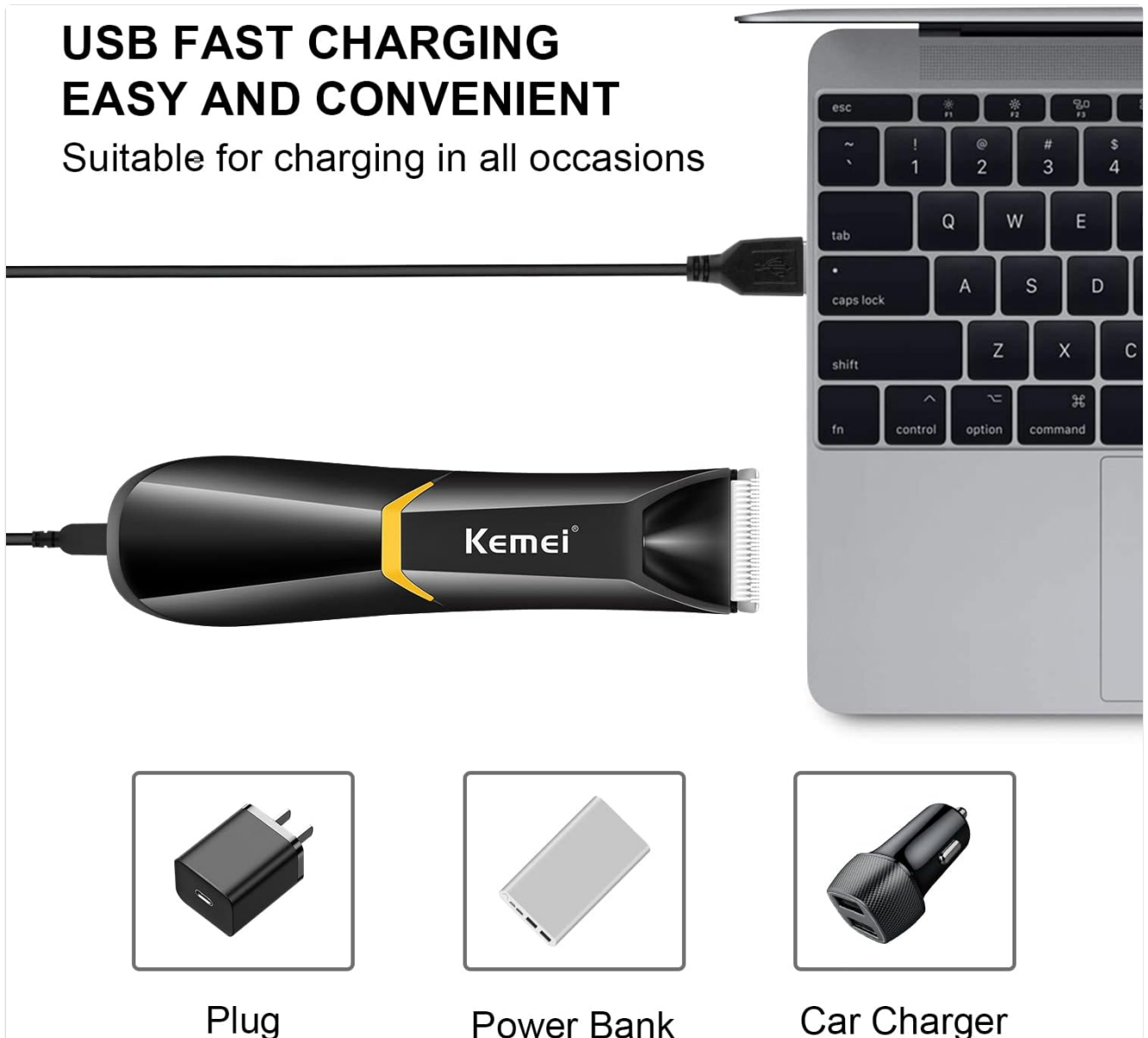
Image: A detailed view of the trimmer's stainless steel cutter head, highlighting the precision blades.

- **High-Performance Silent Motor:** Equipped with an advanced motor, this electric pubic hair trimmer delivers strong power and speed while operating quietly, with noise levels not exceeding 65 dB. This allows for discreet grooming without disturbing others.
- **Long-Lasting Battery and LED Light:** The electric ball trimmer includes a large capacity 600 mAh Li-ion battery, providing extended usage time on a single charge. An integrated LED light ensures safe and thorough trimming even in low-light conditions.

- **Convenient USB Fast Charging:** Featuring a built-in high-capacity lithium battery, the trimmer supports USB fast charging. A 1.5-hour charge provides approximately 60 minutes of use. It offers universal charging options via a USB cable and a charging base, making it convenient for both home and travel.

USB FAST CHARGING EASY AND CONVENIENT

Suitable for charging in all occasions



The image shows a black Kemei trimmer with a yellow accent on the handle, connected via a USB cable to a laptop. The trimmer has the brand name 'Kemei' printed on the handle. Below the trimmer, there are three icons representing different charging methods: a wall plug, a power bank, and a car charger.

Plug Power Bank Car Charger

Image: The KEMEI trimmer connected via USB for charging, illustrating compatibility with various power sources like laptops, wall plugs, power banks, and car chargers.

- **Waterproof and Easy to Clean:** The trimmer is fully washable, supporting both wet and dry shaving for a comfortable experience. Its removable cutter head allows for direct rinsing under water after use. A cleaning brush is included for deeper and more hygienic cleaning.



Image: The KEMEI trimmer partially submerged in water, illustrating its IPX4 waterproof rating and washability.

SETUP

Charging the Trimmer

1. Before first use, fully charge the trimmer.
2. Connect the USB charging cable to the charging base.
3. Place the trimmer securely into the charging base.
4. Plug the USB cable into a compatible USB power source (e.g., wall adapter, computer, power bank, car charger).
5. The LED indicator on the trimmer will show charging status (refer to the specific light behavior in your product's quick start guide if available). A full charge takes approximately 1.5 hours.

Attaching Guide Combs

1. Ensure the trimmer is turned off.
2. Select the desired guide comb (3mm or 9mm) based on your preferred hair length.
3. Align the comb with the trimmer blade and gently push it until it clicks into place.
4. To remove, gently pull the comb away from the blade.

OPERATING INSTRUCTIONS

General Trimming Tips

- Ensure your skin is clean and dry or slightly damp for wet trimming.
- For best results, hold the trimmer flat against the skin and move it slowly against the direction of hair growth.
- Use the LED light for enhanced visibility in dimly lit areas.

Wet and Dry Use

The KEMEI km-3208 is designed for both wet and dry use. You can use it in the shower or with shaving cream/gel for a smoother, more comfortable shave, or use it dry for quick touch-ups.

Trimming Different Body Areas

This versatile trimmer is suitable for various body parts:

- **Groin and Pubic Area:** Use with a guide comb for sensitive areas to prevent nicks and cuts. Move slowly and carefully.
- **Chest and Abdomen:** Use with or without a guide comb depending on desired length.
- **Armpits:** Lift your arm and gently stretch the skin to ensure an even trim.
- **Back:** May require assistance for hard-to-reach areas.
- **Other Body Hair:** Can be used for general body hair trimming as needed.

Body hair trimmer

Professional high quality advanced hair clipper system

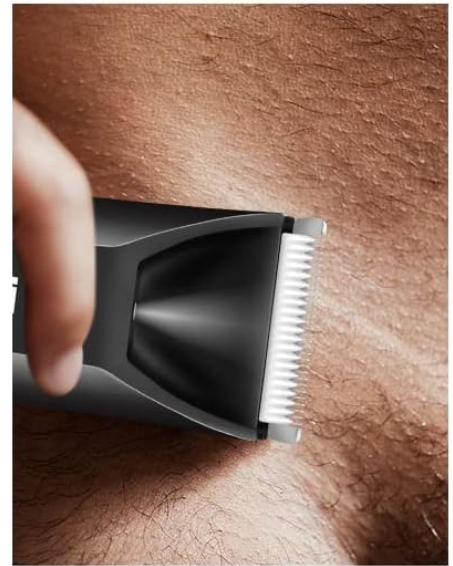


Image: Illustrations demonstrating the KEMEI trimmer's applicability for various body hair trimming, including chest, armpit, buttocks, temple, and bikini line.

MAINTENANCE AND CLEANING

Cleaning the Trimmer

1. Turn off the trimmer and disconnect it from any power source.
2. Remove the guide comb, if attached.
3. Gently detach the cutter head from the trimmer body.
4. Use the included cleaning brush to remove any loose hairs or debris from the blades and the trimmer body.
5. Rinse the cutter head and the trimmer body under running water. Ensure no water enters the charging port if not fully sealed.

6. Shake off excess water and allow all parts to air dry completely before reassembling or storing.

Lubricating the Blades

For optimal performance and longevity, it is recommended to lubricate the blades regularly, especially after cleaning or if the trimmer feels sluggish.

1. Apply 1-2 drops of the included lubricating oil onto the blades.
2. Turn on the trimmer for a few seconds to allow the oil to distribute evenly.
3. Wipe off any excess oil with a soft cloth.

TROUBLESHOOTING

If you encounter any issues with your KEMEI km-3208 Electric Body Trimmer, please refer to the following common solutions:

- **Trimmer not turning on:**
 - Ensure the trimmer is fully charged. Connect it to the charging base and a power source.
 - Check if the charging cable and adapter are working correctly.
- **Poor trimming performance or pulling hair:**
 - Clean the blades thoroughly to remove any trapped hair or debris.
 - Lubricate the blades with the provided oil.
 - Ensure the guide comb is properly attached.
 - The battery might be low; try charging the trimmer.
- **Unusual noise during operation:**
 - Clean and lubricate the blades.
 - Ensure no foreign objects are lodged in the blade area.

If the issue persists after trying these steps, please contact KEMEI customer support for further assistance.

SPECIFICATIONS

Feature	Detail
Brand	KEMEI
Model Reference	km-3208
Product Dimensions	14.48 x 3.48 x 3.48 cm
Product Weight	440 g
Blade Material	Ceramic
Color	Black
Power Source	Battery Powered (600 mAh Li-ion)
Charging Time	Approx. 1.5 hours

Operating Time	Approx. 60 minutes
Special Features	Illuminated (LED Light), Waterproof (IPX4)

WARRANTY AND SUPPORT

For information regarding warranty coverage, returns, or technical support for your KEMEI km-3208 Electric Body Trimmer, please refer to the documentation included with your purchase or visit the official KEMEI website. You may also contact KEMEI customer service directly for assistance with product inquiries or issues.

KEMEI Electric has 20 years of experience in scientific research, development, manufacturing, and sales. They adhere to the principle of "quality to create a brand, brand for development" and have achieved fruitful results in the personal care industry.

[Visit the KEMEI Store on Amazon](#)