

[Manuals.plus](#) /

> [Joydeco](#) /

> Joydeco Cordless Blackout Cellular Shades (White, 31" W x 64" H) Instruction Manual

## Joydeco SC0005-WT-31

# Joydeco Cordless Blackout Cellular Shades (White, 31" W x 64" H) Instruction Manual

Model: SC0005-WT-31 | Brand: Joydeco

## 1. IMPORTANT SAFETY INFORMATION

Please read all instructions carefully before installation and use. Keep this manual for future reference.

- **Child and Pet Safety:** This product features a cordless design, which significantly reduces the risk of strangulation for children and pets. Ensure the shades are always operated smoothly and kept out of reach of small children.
- **Installation:** Improper installation can lead to product malfunction or injury. Follow the installation instructions precisely. If you are unsure, seek professional assistance.
- **Operation:** Operate the shades gently. Forcing the shades up or down can damage the internal mechanism.
- **Maintenance:** Only perform maintenance as described in this manual. Do not attempt to disassemble or repair the product yourself.
- **Environment:** Do not expose the shades to excessive moisture or extreme temperatures, as this may affect material integrity and performance.

## 2. PRODUCT OVERVIEW

The Joydeco Cordless Blackout Cellular Shades are designed to provide privacy, thermal insulation, and noise reduction for indoor windows. Their honeycomb structure and blackout fabric ensure optimal light control and energy efficiency.

### Key Features:

- **Cordless Design:** Offers a clean aesthetic and enhanced safety for homes with children and pets.
- **True Blackout:** Blocks 99% of light and filters UV rays, creating a dark and serene environment.
- **Thermal Insulation & Noise Reduction:** Honeycomb cells provide energy-efficient insulation and help reduce outside noise.

- **Free Stop System:** Allows the shades to be stopped at any desired position, offering flexible light and privacy control.
- **Durable Material:** Constructed from non-woven fabric with an aluminized film for durability and enhanced performance.



Figure 2.1: Key components of the Joydeco Cellular Shade, highlighting the aluminum headrail, bottom rail, 1-inch single cell design for energy saving, and the ergonomic handle for easy operation.

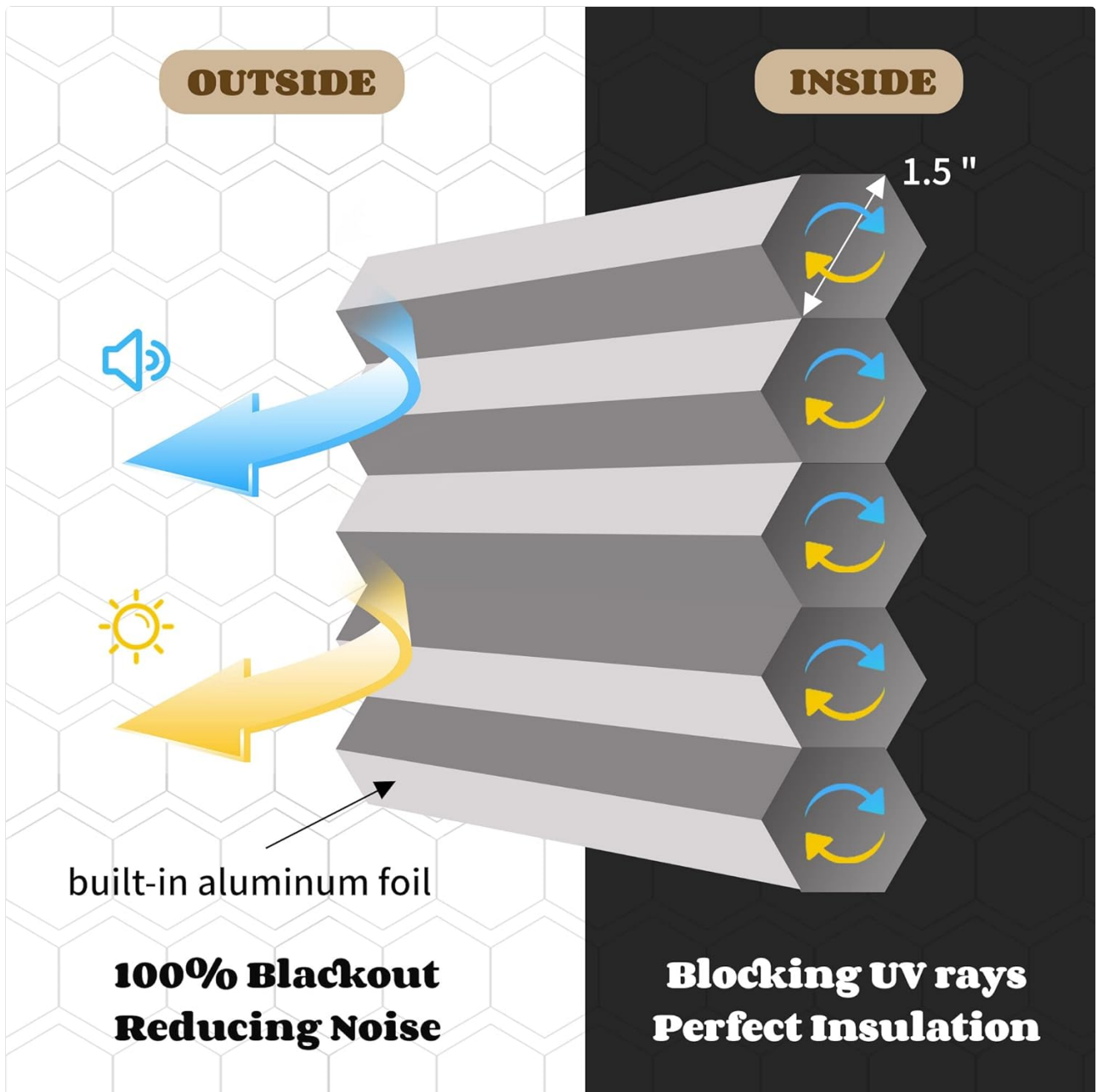


Figure 2.2: The innovative honeycomb design maximizes thermal insulation and blackout effects, contributing to energy savings and a quieter indoor environment.



Figure 2.3: The cordless design ensures child safety by eliminating hazardous cords, making it suitable for families with young children and pets.

### 3. SETUP AND INSTALLATION

The Joydeco Cellular Shades are designed for easy installation. All necessary accessories are included in the package.

#### Package Contents:

- Cellular Shade (x1)
- Handle (x1)
- Brackets (x2)
- Screws (x4)
- Expansion Plugs (x4)
- Installation Instructions

#### Measuring for Installation:

Accurate measurement is crucial for optimal fit and performance. These blinds are highly recommended for inside mounts.

- **For Inside Mount:** Measure the exact inside width of your window frame. The cellular shade width should be equal to or slightly less than the window's inner width (maximum reduction of 0.25 inches). The blind height should match the window height. Ensure your window depth is greater than 2 inches.
- **For Outside Mount:** Measure the desired outer width of the blind (typically window outer width + 4 inches for overlap). The blind height should be the window height + 4 inches.

## What's In The Package

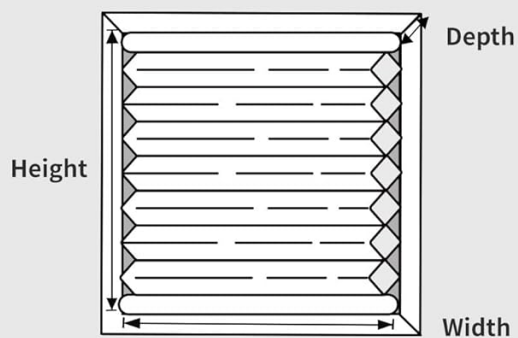


Handle×1 Brackets×2 Screws×4

Stylish cellular shades×1



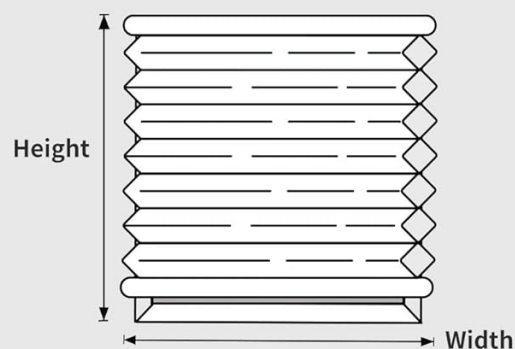
## How To Measure



### Measure Inside Mount:

Blind Width=**Window Inner Width**-1/4"

Blind Height>Window Height(Note: Window Depth>2")

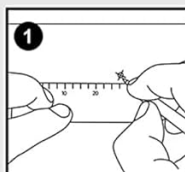


### Measure Outside Mount:

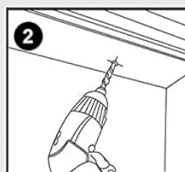
Blind Width=**Window Outer Width**+4"

Blind Height=Window Height+4"

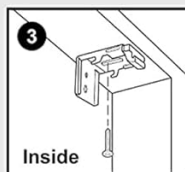
## Inside/Outside Mount



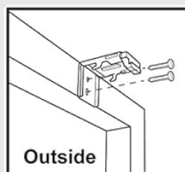
**1** Measure and mark with pencil



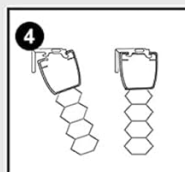
**2** Punch holes at the marked locations



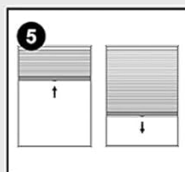
**3** Place the expansion plug into the hole  
Secure the mounting code with screws



**3** Secure the mounting code with screws



**4** Snap the top rail into the slot



**5** Gently pull up and down

Figure 3.1: Detailed guide on how to measure your window for both inside and outside mount options, ensuring a perfect fit for your Joydeco Cellular Shades.

### Installation Steps (Inside/Outside Mount):

1. **Measure and Mark:** Use a pencil to mark the desired locations for the mounting brackets based on your measurements.
2. **Punch Holes:** Drill pilot holes at the marked locations. Insert the expansion plugs into the holes.
3. **Secure Brackets:** Place the mounting brackets over the expansion plugs and secure them with the provided screws. Ensure they are firmly attached.
4. **Attach Handle:** Place the clear plastic handle onto the bottom rail of the cellular shade.
5. **Snap Top Rail:** Carefully align the top rail of the cellular shade with the installed brackets and snap it into the slots until it clicks securely into place.
6. **Test Operation:** Gently pull the shade up and down to ensure smooth operation and proper installation.

Your browser does not support the video tag.

*Video 3.2: Official Joydeco video demonstrating the installation process for cordless cellular shades. This video shows how to mount the brackets, attach the handle, and snap the shade into place.*

## 4. OPERATING INSTRUCTIONS

---

The Joydeco Cordless Cellular Shades feature a user-friendly free stop system for effortless operation.

- **To Lower the Shade:** Gently pull down on the bottom rail or the attached handle. The shade will extend downwards and stop at your desired position when you release it.
- **To Raise the Shade:** Gently push up on the bottom rail or the attached handle. The shade will retract upwards and stop at your desired position when you release it.
- **Adjusting Position:** The free stop system allows you to adjust the shade to any height, providing flexible control over light and privacy.

Your browser does not support the video tag.

*Video 4.1: This video demonstrates the smooth and easy operation of the cordless blackout cellular shades, showing how to raise and lower them to any desired position.*

## 5. MAINTENANCE

---

Proper care will ensure the longevity and appearance of your Joydeco Cellular Shades.

- **Cleaning:** The shades should be spot cleaned only. Use a soft, damp cloth with mild soap and water for any stains. Do not immerse the shades in water or use harsh chemical cleaners.
- **Dusting:** Regularly dust the shades with a soft brush or vacuum cleaner with a brush attachment to prevent dust buildup in the honeycomb cells.
- **Inspection:** Periodically check the mounting brackets and operating mechanism for any signs of wear or damage.

## 6. TROUBLESHOOTING

---

If you encounter any issues with your cellular shades, refer to the following common troubleshooting tips:

- **Shade Does Not Stay Up/Down:**
  - Ensure the shade is properly seated in the mounting brackets.
  - The tension mechanism might need adjustment. Gently raise and lower the shade several times to reset the mechanism.
- **Shade is Difficult to Operate:**
  - Check for any obstructions in the window frame or along the shade's path.
  - Ensure the shade is clean and free of debris that might hinder movement.
- **Light Leakage Around Edges:**
  - For inside mounts, ensure measurements were precise. A slight gap is normal due to manufacturing tolerances.
  - Consider an outside mount for maximum light blockage if significant light leakage is observed with an inside mount.

If these steps do not resolve the issue, please contact Joydeco customer support.

## 7. SPECIFICATIONS

<b>Brand</b>	Joydeco
<b>Model Number</b>	SC0005-WT-31
<b>ASIN</b>	B0C5WYGHCW
<b>UPC</b>	850052970741
<b>Color</b>	A - White
<b>Size</b>	31"W x 64"H
<b>Product Dimensions</b>	64"L x 31"W
<b>Material</b>	Aluminum (Headrail), Non-woven Fabric + Aluminized Film (Shade)
<b>Opacity</b>	Blackout
<b>Operation Mode</b>	Manual (Cordless)
<b>Special Feature</b>	Thermal Insulation
<b>Mounting Type</b>	Inside Mount (Recommended)
<b>Product Care Instructions</b>	Spot Clean Only
<b>Item Weight</b>	3.44 pounds (1.57 Kilograms)

## 8. WARRANTY AND SUPPORT

Joydeco stands behind the quality of its products. For specific warranty details, please refer to the documentation included with your purchase or visit the official Joydeco website.

If you have any questions, require assistance with installation, or need to report missing/damaged parts, please contact Joydeco customer support. Free replacements for missing or damaged parts upon delivery are available.