

LOBKIN Hair Dryer Brush Set

LOBKIN Ionic Technology Hair Dryer Brush User Manual

Model: Hair Dryer Brush Set

1. INTRODUCTION

Thank you for choosing the LOBKIN Ionic Technology Hair Dryer Brush. This multifunctional styling tool is designed to simplify your hair care routine by combining the functions of a hair dryer, straightener, curler, and comb. Featuring advanced ionic and tourmaline technology, it aims to reduce frizz, enhance shine, and provide efficient drying and styling for salon-quality results at home. Please read this manual thoroughly before use to ensure safe and optimal performance.

2. PRODUCT OVERVIEW

The LOBKIN Hair Dryer Brush is engineered for versatility and ease of use. Its unique oval-shaped barrel and combination bristles are designed to detangle, smooth, and add volume to your hair.



Figure 2.1: LOBKIN Ionic Technology Hair Dryer Brush. This image displays the main unit of the hair dryer brush, showcasing its black body with pink accents and the oval brush head with mixed bristles.

Key Features:

- **4-in-1 Functionality:** Combines a hair dryer, straightener, curler, and comb for comprehensive styling.
- **Ionic Technology:** Emits negative ions to reduce frizz, static, and enhance hair's shine and smoothness.
- **Tourmaline Technology:** Helps to seal the hair cuticle, protecting it from heat damage and promoting healthier-looking hair.
- **Unique Bristle Design:** Features a blend of nylon pins and tufted bristles for effective detangling, smoothing, and volumizing.
- **360° Swivel Cord:** Provides flexibility and ease of movement during styling, preventing tangles.
- **Multiple Heat/Speed Settings:** Offers 2 air speeds and 3 heat settings (High, Middle, Low) to suit various hair types and styling needs.
- **Oval Barrel Design:** The distinctive oval shape with 360° airflow ensures even heat distribution, minimizing damage and locking in moisture.

SAFELY DRY & SMOOTH HAIR

4 in 1



Figure 2.2: The LOBKIN Hair Dryer Brush highlighting its 4-in-1 functionality, illustrating how it replaces a hair curler, hair straightener, hair dryer, and comb.

Ionic Technology Keeps Healthy Hair

One step hair designer is suitable for various hair types and make the hair more outstanding and smoother

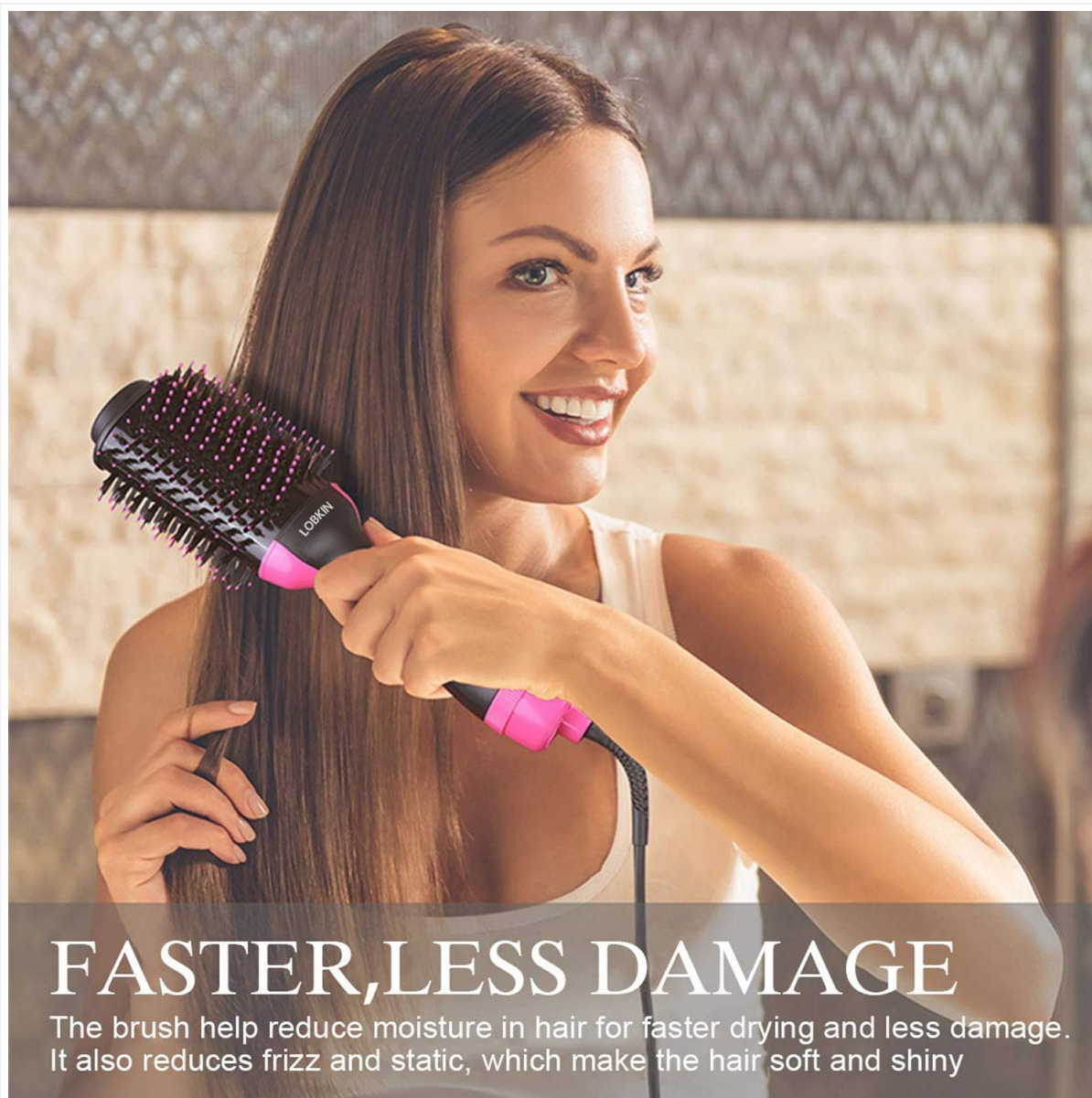


Figure 2.3: This image demonstrates the ionic technology of the LOBKIN Hair Dryer Brush, showing how it helps to curl, straighten, and dry hair while maintaining health.

Details Display



Figure 2.4: A detailed display of the LOBKIN Hair Dryer Brush, pointing out its oval design, massaging dots for scalp relaxing, ergonomic handle, air vent bristles for detangling, 3 adjustable modes, and 360° swivel cord.



FASTER, LESS DAMAGE

The brush help reduce moisture in hair for faster drying and less damage. It also reduces frizz and static, which make the hair soft and shiny

Figure 2.5: This image illustrates the benefit of the LOBKIN Hair Dryer Brush for faster drying and less hair damage, showing a woman with smooth, styled hair.

3. SAFETY INSTRUCTIONS

To reduce the risk of electric shock, burns, fire, or injury, always follow these basic safety precautions:

- Read all instructions before using this appliance.
- Keep away from water. Do not use while bathing or in a shower.
- Do not place or store appliance where it can fall or be pulled into a tub or sink.
- Do not reach for an appliance that has fallen into water. Unplug immediately.
- Always unplug this appliance immediately after using.
- Unplug this appliance before cleaning.
- Do not operate any appliance with a damaged cord or plug, or if the appliance malfunctions or has been dropped or damaged in any manner.
- Keep the cord away from heated surfaces. Do not wrap the cord around the appliance.
- Never block the air openings of the appliance or place it on a soft surface, such as a bed or couch, where the air openings may be blocked. Keep the air openings free of lint, hair, and the like.
- Never use while sleeping.

- Never drop or insert any object into any opening.
- Do not use outdoors or operate where aerosol (spray) products are being used or where oxygen is being administered.
- Do not use an extension cord with this appliance.
- Do not direct hot air towards eyes or other heat-sensitive areas.
- The brush head may become hot during use. Allow it to cool before handling or storing.
- This appliance is intended for household use only.

4. SETUP

Before first use, ensure the appliance is clean and free from any packaging materials. Familiarize yourself with the controls.

1. **Unpack:** Carefully remove the hair dryer brush from its packaging.
2. **Inspect:** Check the appliance for any signs of damage. Do not use if damaged.
3. **Plug In:** Insert the power plug into a suitable electrical outlet. Ensure the outlet voltage matches the appliance's requirements.
4. **Understand Controls:** The appliance features a rotating switch at the base of the handle for power and heat/speed settings.

3 TEMPERATURES & 2 SPEED SETTINGS



ON / OFF



LOW

Low Heat & High Air Speed



MIDDLE

Warm Temp & Low Air Speed



HIGH

Hot Temp & High Air Speed

Please note that the sign indicates the heat, not the blower speed



Figure 4.1: Close-up of the LOBKIN Hair Dryer Brush's control dial, showing the "OFF", "LOW", "MIDDLE", and "HIGH" settings with corresponding indicator lights. This image clarifies the temperature and speed settings.

5. OPERATING INSTRUCTIONS

For best results, towel-dry your hair to remove excess water before using the LOBKIN Hair Dryer Brush. This will help reduce drying time and protect your hair from excessive heat exposure.

Using the Settings:

- **OFF:** Turns the appliance off.
- **LOW:** Provides low heat and high air speed. Ideal for fine or damaged hair, or for finishing styles.
- **MIDDLE:** Delivers warm temperature and low air speed. Suitable for normal hair, or for initial drying.
- **HIGH:** Offers hot temperature and high air speed. Best for thick or coarse hair, or for quick drying.

Rotate the switch at the base of the handle to select your desired setting. The indicator lights will illuminate to show the active setting.

Styling Tips:

1. **Section Hair:** Divide your hair into manageable sections using clips.
2. **Start Drying:** Begin with the lower sections of your hair. Place the brush close to the roots and glide it down towards the ends.
3. **For Volume:** For extra lift at the roots, hold the brush at the root area for a few seconds before pulling down.
4. **For Straightening:** Pull the brush slowly through each section, keeping tension.
5. **For Curling/Waving:** Wrap sections of hair around the barrel and hold for a few seconds before releasing.
6. **Repeat:** Continue with all sections until your hair is dry and styled as desired.
7. **Cool Shot (if applicable):** If your model has a cool shot function (not explicitly mentioned but common), use it to set your style.



Video 5.1: Official LOBKIN demonstration video showing the Hair Dryer Brush in use for drying and styling hair. This video illustrates various techniques for achieving different hairstyles with the product.

6. MAINTENANCE

Proper maintenance ensures the longevity and optimal performance of your LOBKIN Hair Dryer Brush.

1. **Unplug:** Always unplug the appliance from the power outlet and allow it to cool completely before cleaning.
2. **Clean Bristles:** Remove any hair tangled in the bristles using your fingers or a comb.
3. **Wipe Down:** Wipe the surface of the appliance with a soft, damp cloth. Do not use abrasive cleaners or solvents.
4. **Clean Air Vents:** Ensure the air intake and exhaust vents are free from dust and debris to prevent overheating. Use a small brush or vacuum cleaner if necessary.
5. **Storage:** Store the appliance in a cool, dry place, away from moisture and direct sunlight. Do not wrap the cord tightly around the appliance.

7. TROUBLESHOOTING

If you encounter any issues with your LOBKIN Hair Dryer Brush, refer to the following common problems and solutions:

Problem	Possible Cause	Solution
Appliance does not turn on.	Not plugged in correctly, power outlet issue, or internal fault.	Ensure the plug is fully inserted. Test the outlet with another appliance. If still not working, contact customer support.
No airflow or weak airflow.	Blocked air intake/exhaust vents.	Unplug the appliance and clean any lint, hair, or debris from the air vents.
Appliance overheats and shuts off.	Blocked air vents, prolonged use on high heat, or internal safety mechanism activated.	Unplug and allow to cool. Clean air vents. Reduce usage time or heat setting.
Hair gets tangled in bristles.	Using on large sections of hair, or hair is not properly detangled beforehand.	Work with smaller sections of hair. Ensure hair is detangled before styling.

If the problem persists after trying these solutions, please contact LOBKIN customer support for further assistance.

8. SPECIFICATIONS

Feature	Detail
Brand	LOBKIN
Product Dimensions	3.5 x 4.3 x 15.3 inches
Item Weight	1.52 Pounds
Material	Nylon
Power Source	Corded Electric
Special Features	Ionic Technology, Lightweight, Tourmaline Technology



Figure 8.1: Diagram illustrating the dimensions of the LOBKIN Hair Dryer Brush, including its length and brush head measurements.

9. WARRANTY AND SUPPORT

For warranty information and customer support, please refer to the documentation included with your product at the time of purchase. You may also visit the official LOBKIN website or contact their customer service department directly for assistance with product registration, troubleshooting, or warranty claims.

LOBKIN Store Link: [Visit the LOBKIN Store on Amazon](#)

