

[Manuals.plus](#) /

› [D-Link](#) /

› D-Link DMS-108 8-Port 2.5GB Unmanaged Multi-Gigabit Switch User Manual

D-Link DMS-108

D-Link DMS-108 8-Port 2.5GB Unmanaged Multi-Gigabit Switch User Manual

Model: DMS-108

INTRODUCTION

The D-Link DMS-108 is an 8-Port 2.5GB Unmanaged Multi-Gigabit Switch designed to enhance network performance for devices requiring high-speed data transfer. This switch is ideal for connecting 2.5G NAS, 2.5G PCIe Adapters, 2.5G Servers, gaming PCs, and Wi-Fi 6 Access Points with 2.5G WAN ports. It features a durable metal housing, fanless design for silent operation, and supports energy-efficient Ethernet (EEE) to reduce power consumption.

This manual provides instructions for setting up, operating, maintaining, and troubleshooting your DMS-108 switch.



Image: Front view of the D-Link DMS-108 switch, showing 8 Ethernet ports and LED indicators.

PACKAGE CONTENTS

Verify that your package contains the following items:

- D-Link DMS-108 8-Port 2.5GB Unmanaged Multi-Gigabit Switch
- Power Adapter
- Quick Installation Guide (QIG)

If any items are missing or damaged, please contact your local D-Link reseller for assistance.

SETUP

Physical Installation

The DMS-108 switch can be placed on a desktop or mounted on a wall. Ensure the installation location provides adequate

ventilation and is free from excessive heat, humidity, or electromagnetic interference.

Connecting the Switch

1. **Power Connection:** Connect the provided power adapter to the power input port on the rear panel of the DMS-108 switch. Plug the other end of the power adapter into a standard electrical outlet. The power LED on the front panel will illuminate.



Image: Rear panel of the DMS-108, highlighting the power input (12V===1A), ground screw (SWITCH GND), and Kensington lock slot.

2. **Network Device Connection:** Connect your network devices (e.g., computers, NAS, Wi-Fi 6 APs, gaming consoles) to any of the 8 available 2.5 Gigabit Ethernet ports using standard Ethernet cables (Cat5e or Cat6 recommended for optimal performance).

Works with your existing cables

The DMS-108 is **backward compatible with Cat5e and above cabling** which means you don't need to update them to **take advantage of the 2.5x faster transfer rates.**



Image: The D-Link DMS-108 switch demonstrating compatibility with existing Cat5e and Cat6 cables for 2.5x faster transfer rates.

The DMS-108 is a plug-and-play device, requiring no software installation or configuration. It will automatically detect the link speeds of connected devices (100Mb/1G/2.5G) and adjust for optimal performance.

OPERATING THE SWITCH

LED Indicators

The front panel of the DMS-108 features LED indicators for each port and for power status. These LEDs provide visual feedback on the switch's operation:

- **Power LED:** Indicates if the switch is powered on.
- **Link/Act LEDs (per port):**
 - Solid Green: Indicates a stable 2.5G network link.
 - Solid Blue: Indicates a stable 1G network link.
 - Solid Amber: Indicates a stable 100Mb network link.
 - Flashing: Indicates network activity (data transmission).

- Off: No link or device connected.



Image: A detailed view of the DMS-108's front panel, highlighting the Link/Act LEDs for each of the 8 ports.

Key Features

- **Auto-Negotiation:** Automatically senses the link speeds of connected devices (100Mb/1G/2.5G) and adjusts for compatibility and optimal performance.
- **Quality of Service (QoS):** Allows network traffic to be classified into 8 priority levels, ensuring critical data (e.g., gaming, video streaming) receives preferential treatment.
- **Flow Control:** Helps minimize dropped packets during periods of high network congestion, leading to more reliable connections.
- **IGMP Snooping:** Optimizes multicast data streams, which is beneficial for bandwidth-intensive applications like IPTV, by forwarding multicast traffic only to ports that have requested it.
- **Energy-Efficient Ethernet (EEE) (IEEE 802.3az):** Reduces power consumption during periods of low network activity, conserving energy and lowering operational costs.

Upgrade your Network to Ultra-Fast Multi-Gig

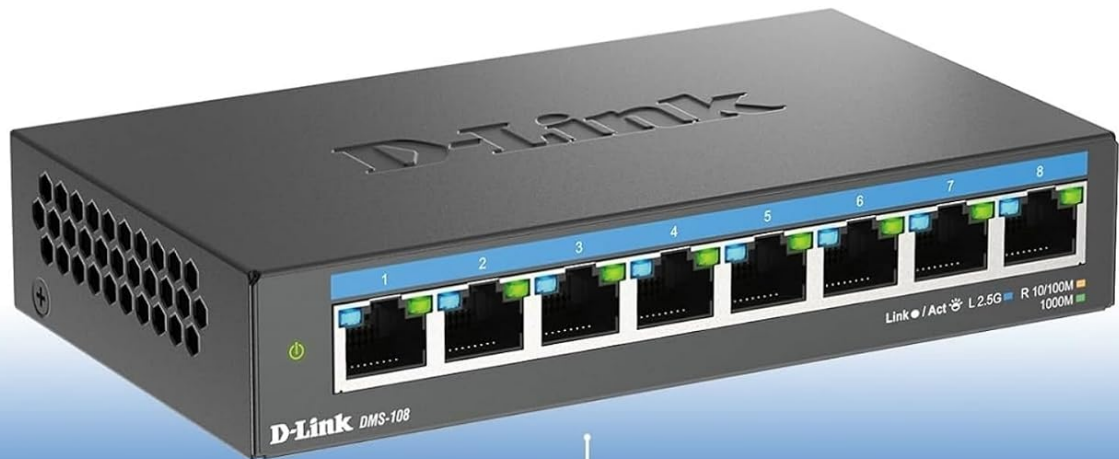


Image: An illustration demonstrating how the DMS-108 switch can upgrade a network to ultra-fast multi-gigabit speeds by connecting various devices.

Durable, Quiet, Energy-Efficient and Built to Perform

Durable **metal casing**, **silent fanless design**, and **Green features** make the DMS-108 the ideal switch for your high-performance network.



Sturdy Metal
Housing



Silent
Operation



Energy Efficient
Features

35+
YEARS

35+ Years
in Business

Image: The DMS-108 switch highlighting its durable metal casing, silent fanless design, energy-efficient features, and D-Link's 35+ years of experience.

MAINTENANCE

To ensure optimal performance and longevity of your D-Link DMS-108 switch, follow these maintenance guidelines:

- **Ventilation:** Ensure the switch is placed in a location with adequate airflow. Do not block the ventilation holes on the sides of the device.
- **Cleaning:** Periodically clean the exterior of the switch with a soft, dry cloth. Avoid using liquid or aerosol cleaners, as they may damage the device.
- **Cable Management:** Keep network cables organized and free from kinks or excessive bends to prevent signal degradation.
- **Power Supply:** Use only the power adapter provided with the switch. If the power adapter is damaged, contact D-Link support for a replacement.
- **Firmware Updates:** As an unmanaged switch, the DMS-108 typically does not require firmware updates. However, always refer to the D-Link support website for any specific recommendations.

TROUBLESHOOTING

If you encounter issues with your DMS-108 switch, refer to the following troubleshooting tips:

- **No Power:**

- Check if the power adapter is securely connected to the switch and the electrical outlet.
- Verify that the electrical outlet is functioning correctly by plugging in another device.
- Ensure the power LED on the switch is illuminated.

- **No Link on a Port:**

- Ensure the Ethernet cable is securely connected to both the switch port and the connected device.
- Verify that the connected device is powered on and its network adapter is enabled.
- Try a different Ethernet cable to rule out a faulty cable.
- Test with a different port on the switch.
- Check the Link/Act LED for the specific port. If it's off, there's no active connection.

- **Slow Network Speed:**

- Ensure you are using Cat5e or Cat6 Ethernet cables for 2.5G connections. Older cables (e.g., Cat5) may limit speed.
- Verify that your connected devices support 2.5G Ethernet. The switch will operate at the highest common speed.
- Check the Link/Act LED color for the port to confirm the negotiated speed (Green for 2.5G, Blue for 1G, Amber for 100Mb).
- Reduce network congestion by limiting simultaneous bandwidth-intensive activities.

- **Intermittent Connection:**

- Check all cable connections for looseness or damage.
- Ensure the switch is not overheating. Provide adequate ventilation.
- Avoid placing the switch near sources of strong electromagnetic interference.

If problems persist, contact D-Link Technical Support for further assistance.

SPECIFICATIONS

Feature	Description
Brand	D-Link
Model Number	DMS-108
Number of Ports	8
Interface	RJ45
Data Transfer Rate	Up to 40 Gigabits Per Second (Switching Capacity)
Switch Type	Multi-speed or Multi-gigabit Store-and-Forward
Case Material Type	Metal
Color	Black

Feature	Description
Item Dimensions (L x W x H)	5.71"L x 3.34"W x 1.1"H
Item Weight	0.77 Pounds
Upper Temperature Rating	40 Degrees Celsius
Included Components	Device, Power Supply, QIG
UPC	790069470509

WARRANTY INFORMATION

The D-Link DMS-108 switch comes with a Limited Warranty. For detailed information regarding the terms and conditions of your warranty, please refer to the official D-Link website or the warranty card included with your product. Optional protection plans may be available for purchase, offering extended coverage beyond the standard manufacturer's warranty. Please check with your retailer for details on available protection plans.

SUPPORT

For technical support, product registration, or to download the latest documentation and software, please visit the official D-Link support website:

www.dlink.com/support

You can also find additional resources and frequently asked questions on the D-Link website.

PRODUCT VIDEO

Watch the official D-Link video for an overview of D-Link Switch Solutions for various environments.

Your browser does not support the video tag.

Video: D-Link Switch Solutions for Home Gaming, SOHO, SMB, and Enterprise environments. This video provides a general overview of D-Link's switch offerings.

