

Manuals+

[Q & A](#) | [Deep Search](#) | [Upload](#)

[manuals.plus](#) /

› [Yaheetech](#) /

› [Yaheetech Modern Velvet Accent Chair with Rubberwood Legs and Side Pocket, Grey - Instruction Manual](#)

Yaheetech YTIrpq0001001

Yaheetech Modern Velvet Accent Chair - Instruction Manual

Model: YTIrpq0001001

INTRODUCTION

Thank you for choosing the Yaheetech Modern Velvet Accent Chair. This manual provides detailed instructions for assembly, operation, and maintenance to ensure safe and proper use of your new furniture. Please read all instructions carefully before beginning assembly and retain this manual for future reference.



Image: The Yaheetech Modern Velvet Accent Chair in grey, showcasing its elegant design and side pocket.

SAFETY INFORMATION

For safe use, do not exceed the maximum weight capacity of 300 lb (136 kg). Ensure the chair is placed on a hard, stable surface to maintain stability. Be aware of the assembled dimensions (28" L x 25" W x 30.5" H) and item weight (29.8 lb / 13.5 kg) when moving or positioning the chair. Regularly inspect the chair for any signs of wear or damage to ensure its continued safe use.

PARTS LIST

Please ensure all parts are present before beginning assembly. If any parts are missing or damaged, please contact customer support.

Chair Components:

- Backrest (1)
- Seat Cushion (1)
- Left Armrest (1)
- Right Armrest (1)
- Legs (4)

Hardware Kit:

- Screws (various sizes, labeled A, B, C, E, F)
- Washers (labeled D)
- Allen Wrench (1)

ASSEMBLY INSTRUCTIONS

Follow these steps to assemble your Yaheetech Accent Chair. An assembly video is provided below for visual guidance.

Video: Official Yaheetech Accent Armchair Assembly Guide. This video demonstrates the step-by-step process of assembling the chair, including attaching the backrest, armrests, and legs.

1. **Unpack Components:** Carefully remove all parts from the packaging. Lay them out on a clean, soft surface to prevent scratches. Verify all components and hardware are present using the parts list above.
2. **Attach Backrest to Seat:** Position the seat cushion (7) and backrest (8) as shown in the video (0:05). Align the pre-drilled holes and secure the backrest to the seat using screws (E) and washers (D). Use the provided Allen wrench (F) to tighten.
3. **Attach Side Panels/Armrests:** Place the chair on its side. Align the left armrest (3) with the corresponding side of the seat and backrest. Secure it using screws (E) and washers (D). Repeat this process for the right armrest (6). Ensure all screws are tightened securely.
4. **Attach Legs:** Turn the chair upside down. Attach each leg (1, 2, 4, 5) to the designated corners of the chair base. Use screws (B) and washers (D) to fasten each leg. Tighten all screws firmly with the Allen wrench.
5. **Final Check:** Once all parts are assembled, gently place the chair upright. Check all connections to ensure they are secure and stable.

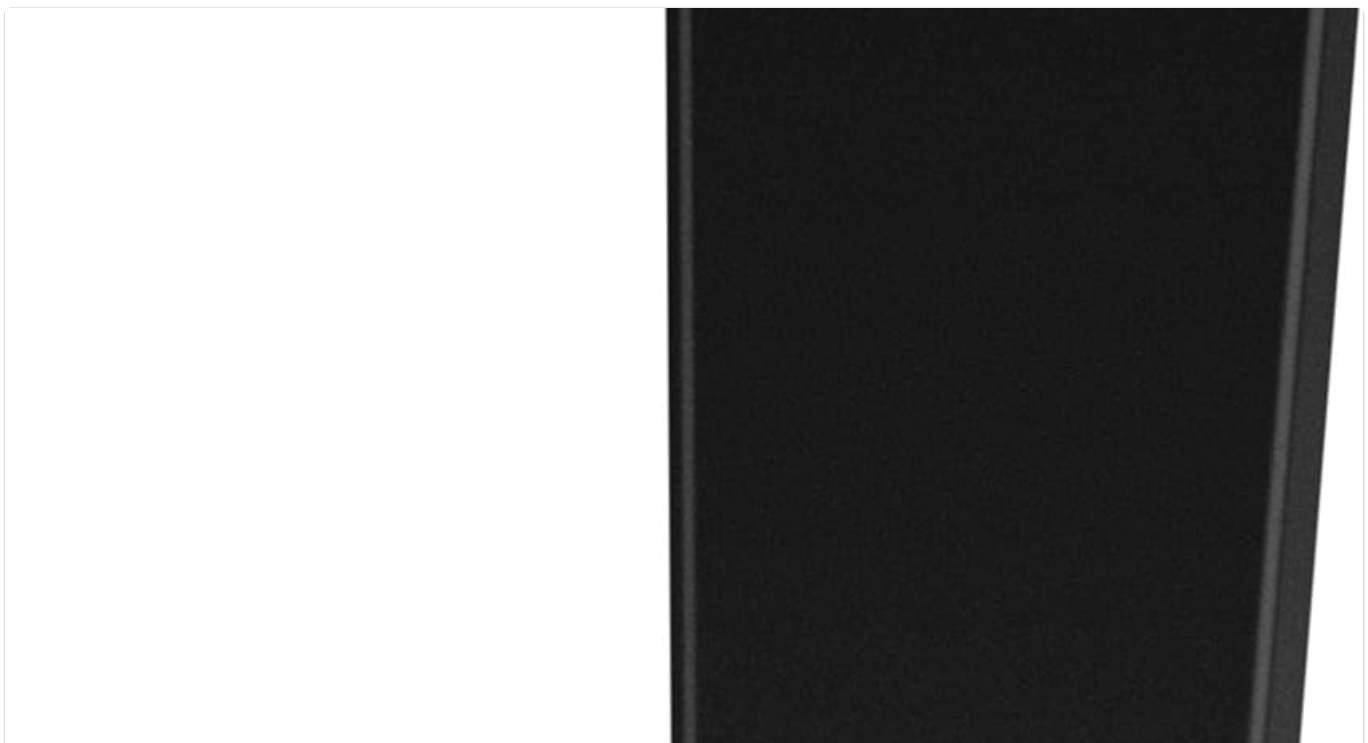


Image: Close-up view of an adjustable foot pad on a chair leg, designed to protect floors and ensure stability.

OPERATING INSTRUCTIONS

Using Your Accent Chair:

- **Comfortable Seating:** The chair features a wide, foam-padded seat cushion (20.5" W x 21" D) with sinuous springs for a comfortable sitting experience.
- **Side Storage Pocket:** Utilize the integrated side pocket (14" L x 7" W) located on the right armrest for convenient storage of small items such as remote controls, magazines, or mobile devices.



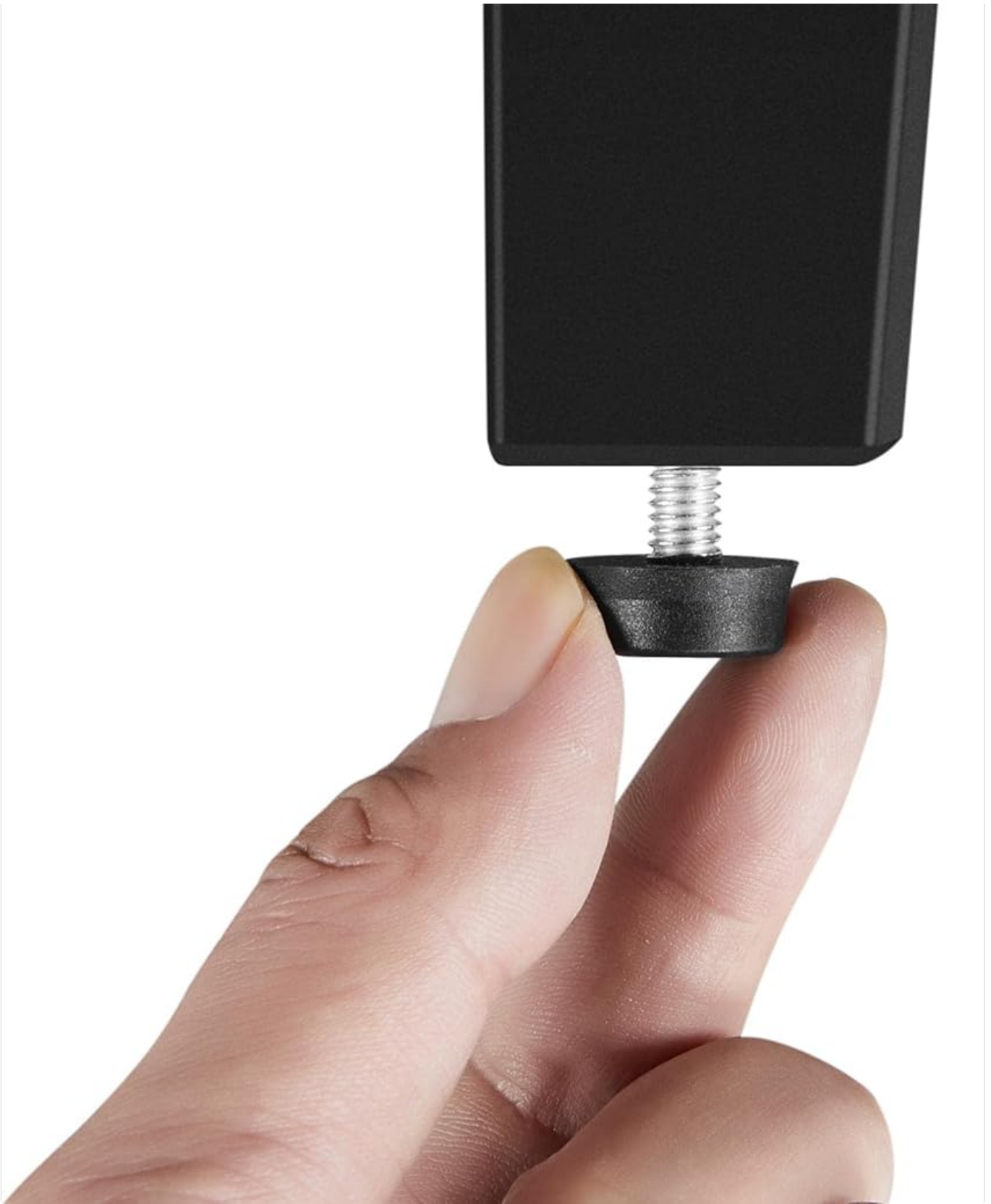


Image: Detail of the chair's side pocket, shown holding a magazine for convenient storage.

MAINTENANCE

To maintain the appearance and longevity of your Yaheetech Accent Chair, follow these simple care instructions:

- **Cleaning:** Wipe clean with a soft, damp cloth. Avoid harsh chemicals or abrasive cleaners, as these may damage the velvet fabric or rubberwood finish.
- **Regular Inspection:** Periodically check all screws and connections to ensure they remain tight. Re-tighten if necessary to maintain stability and safety.

- **Avoid Direct Sunlight:** Prolonged exposure to direct sunlight can cause fading of the fabric. Position the chair away from direct sunlight or use curtains/blinds.

TROUBLESHOOTING

If you encounter any issues during assembly or use, please refer to the following common solutions:

- **Difficulty Aligning Holes:** If screw holes do not align perfectly, gently adjust the position of the components. Do not force screws, as this can strip threads or damage parts. Loosen other screws slightly if needed to allow for adjustment, then tighten all screws evenly.
- **Wobbly Chair:** Ensure all screws are fully tightened. If the chair still wobbles, check the adjustable foot pads on the legs. Adjust them individually to level the chair on uneven surfaces.
- **Missing Parts:** If any parts or hardware are missing from the package, please contact Yaheetech customer service immediately for assistance.

SPECIFICATIONS

Feature	Detail
Brand	Yaheetech
Model Name	Accent Chair (YTlrpq0001001)
Color	Grey
Product Dimensions	28"D x 25"W x 30.5"H
Seat Height	18 Inches
Seat Depth	21 Inches
Seat Length	21 Inches
Arm Height	19 Inches
Chair Backrest Width	25 Inches
Item Weight	29.8 pounds (13.5 kg)
Maximum Weight Recommendation	300 Pounds (136 kg)
Fabric Type	Velvet Fabric
Fill Material	Foam
Furniture Finish	Rubberwood (Legs)
Product Care Instructions	Wipe Clean

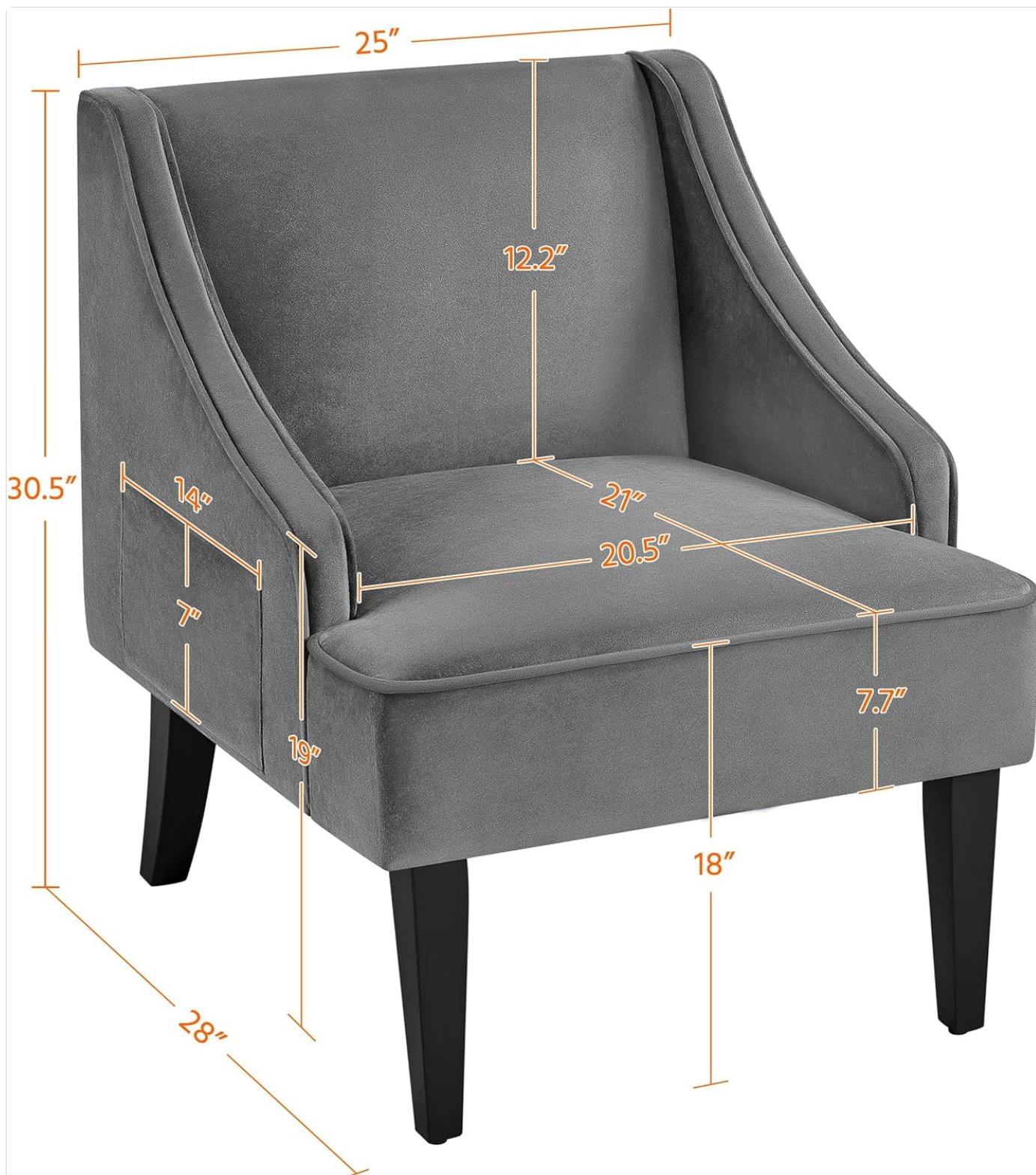


Image: Detailed diagram illustrating the dimensions of the accent chair, including height, width, depth, and seat measurements.

WARRANTY AND SUPPORT

For warranty information or customer support, please refer to the documentation included with your purchase or visit the official Yaheetech website. You can also contact Yaheetech customer service through the retailer where the product was purchased.



1. Please read this instruction manual carefully before attempting to assemble.
2. The back of the chair is made of high-quality wood, so it is recommended to use a soft cloth to clean it.
3. The seat is made of high-quality fabric, so it is recommended to use a soft cloth to clean it.
4. The chair is made of high-quality metal, so it is recommended to use a soft cloth to clean it.
5. The chair is made of high-quality plastic, so it is recommended to use a soft cloth to clean it.



[Yaheetech 612415 Rocking Chair Assembly and Care Instructions](#)

Comprehensive assembly guide and maintenance tips for the Yaheetech 612415 rocking chair. Learn how to assemble, care for, and maintain your Yaheetech glider chair for optimal use.