

OTOFIX IM2

OTOFIX IM2 Key Programming Tool User Manual

Model: IM2 | Brand: OTOFIX

1. PRODUCT OVERVIEW

The OTOFIX IM2 is an advanced key programming and diagnostic tool designed for professional locksmiths and automotive technicians. It combines comprehensive immobilizer functions, all-system diagnostics, and advanced ECU coding capabilities into a single, powerful device. Equipped with the XP1 Pro key programmer, it offers extensive coverage for various vehicle makes and models.

Key features include:

- **Locksmith-Level IMMO Services:** Provides a wide range of immobilizer functions such as IMMO ECU reset/adaptation, data backup/restore, universal key generation, and key learning.
- **All-in-one XP1 Pro Key Programmer:** An enhanced key programmer supporting extensive MCU, EEPROM, and ECU component types, including key writing by dump, key unlocking, and frequency detection.
- **Active Programming, ECU Coding, and Testing:** Facilitates ECU recoding, relearning, recombination, customization, and offers bi-directional active tests to verify component functionality.
- **OE-Level All System Diagnostics:** Capable of accessing all vehicle systems (e.g., PCM, ECM, ABS, SRS) to retrieve ECU information, monitor live data, and perform comprehensive scans.
- **40+ Service Functions:** Includes commonly used maintenance services such as oil reset, SAS, ABS, EPB, TPMS, battery reset, and throttle services.
- **Premium Hardware:** Features an 8-core processor, 4+128GB memory, Android 10.0 OS, a 10.1-inch 1920x1200 touchscreen, and a 15,000 mAh battery for extended operation.



Figure 1.1: The OTOFIX IM2 Key Programming Tool, including the main tablet, XP1 Pro programmer, and various adapters, all housed within a durable carrying case.

ALL-IN-ONE: IMM*O + K*ey Program + Diagnostics

2025 IM*MO EXPERT: **OTOFIX IM2**

TOP K*ey & Chip Programmer

- 2342+ MCU
- 953+ EEPROM
- 257+ IMM*O ECU
- 94+ Engine ECU
- 82+ Airbag ECU
- Ben.z Infrared Ke.y
- Remote Frequency Detection

Locksmith IM*MO Services

- Smart & Expert Mode
- Read PIN/CS (AKL)
- IMM*O ECU Reset/Adaption
- IMM*O ECU Refresh/Coding
- IMM*O Data Backup/Restore
- EEPROM Data Backup/Restore
- Ke*y & Remote Learning
- For Ben.z/BM-W/Volvo/VAG ...

OE-Level Diagnostics

- ECU Coding as Dealership
- 40+ Services & AutoVIN
- Active Tests/Bidirectional
- All System Scan/AutoVIN
- VAG/Bentley Guided Function
- DoIP/CAN-FD/D-PDU/RP1210

2-YEAR Updates Included

Figure 1.2: A visual summary of the OTOFIX IM2's core functionalities, highlighting its capabilities in key programming, comprehensive diagnostics, and specialized immobilizer services.

2. SETUP AND INITIAL USE

This section outlines the steps for setting up your OTOFIX IM2 device for the first time.

2.1 Unboxing and Component Identification

Upon opening the carrying case, verify that all components are present and undamaged. The full kit typically includes:

- OTOFIX IM2 Main Unit (Tablet)
- XP1 Pro Key Programmer
- Main Cable
- USB Cable (2M)

- Mini USB Cable
- AC/DC Adapter (12V)
- Spare Fuses (6x30 mm, 2PCS)
- Auxiliary Power Outlet Adapter
- USB to Ethernet Adapter
- APB101 (USB Cable)
- APB104 (MCU_FQFP64)
- APB105 (MCU_FQFP80)
- APB106 (MCU_FQFP112)
- APB107 (MCU_FQFP144)
- APB108 (MCU_FQFP176)
- APB129 (EEPROM Adapter)
- APB125 (Mercedes-Benz Infrared Collector)
- APA002 (EEPROM Socket)
- APA101 (Signal Cable)
- APA103 (EEPROM Clamp)
- APA107 (ECU Cable)
- APA108 (MCU Cable)
- APA109 (MC9S12 Cable)
- Connect Cable
- Quick Reference Guide
- Packing List
- Carrying Case

FULL KIT FOR LOCKSMITH PRO WORK

Official Authorized Online Store, No-Worry Purchase

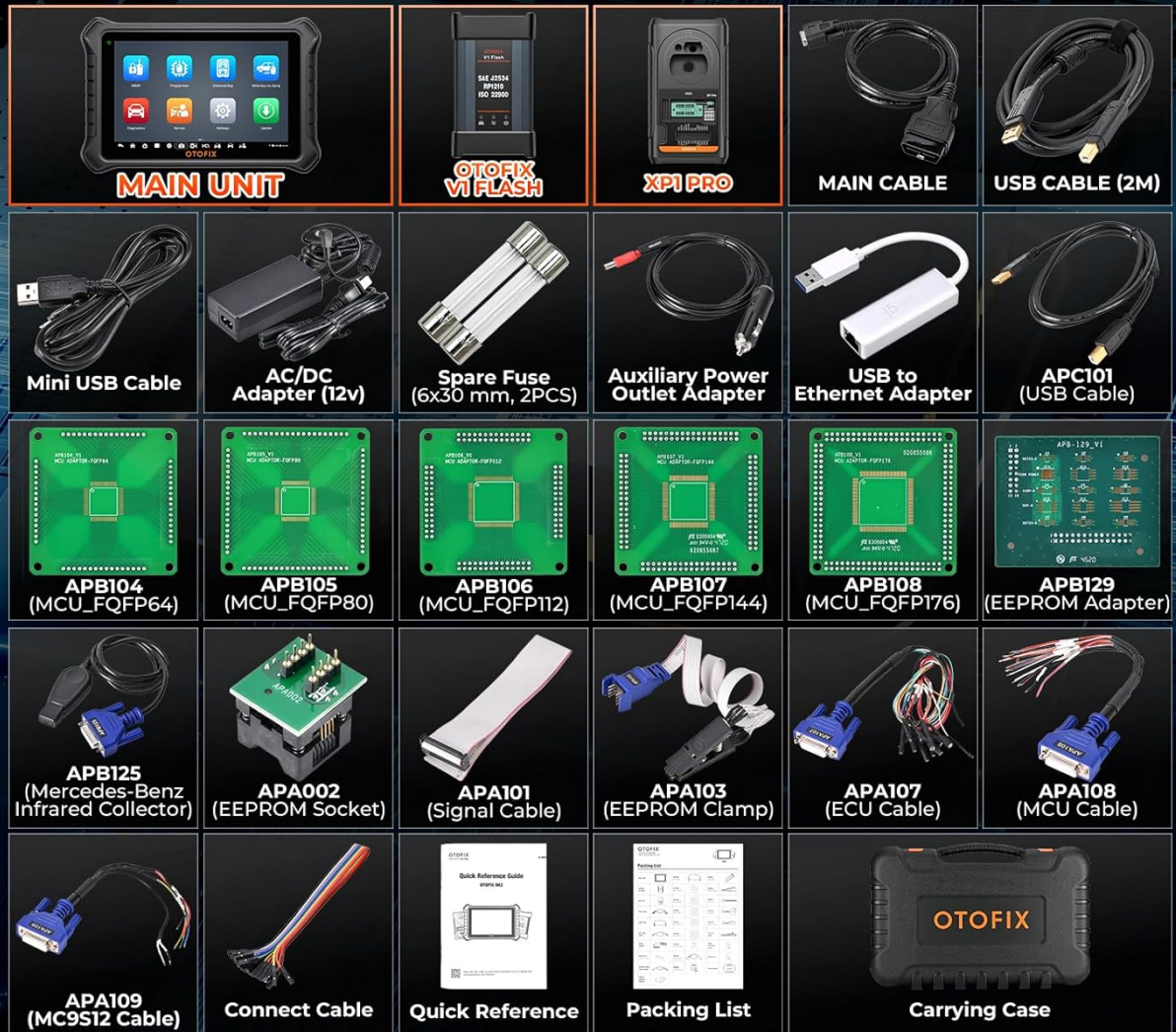


Figure 2.1: A detailed view of all components included in the OTOFIX IM2 professional kit, essential for various key programming and diagnostic tasks.

2.2 Powering On and Initial Configuration

1. Connect the AC/DC Adapter to the OTOFIX IM2 main unit and a power outlet to charge the device. Ensure the device is fully charged before extensive use.
2. Press and hold the Power button to turn on the device.
3. Follow the on-screen prompts to complete the initial setup, including selecting your language (English), connecting to a Wi-Fi network, and registering your device.
4. Perform a software update to ensure you have the latest features and vehicle coverage. This is crucial for optimal performance and compatibility.

3. OPERATING THE OTOFIX IM2

The OTOFIX IM2 offers a user-friendly interface for various automotive tasks. This section provides an overview of its main operational modes.

3.1 IMMO Services

The IMMO function is designed for key programming and immobilizer system maintenance. It supports a wide range of functions for different vehicle brands.

- **IMMO ECU Reset/Adaption:** Used to reset or adapt the immobilizer control unit when replacing components.
- **IMMO Data Backup/Restore:** Allows for backing up and restoring immobilizer data, including EEPROM data.
- **Key Learning/Remote Learning:** Guides through the process of adding new keys or remotes to the vehicle's immobilizer system.
- **Universal Key Generation:** Enables the creation of universal keys for specific applications.
- **Smart & Expert Mode:** Provides guided procedures for common tasks and advanced options for experienced users.

LOCKSMITH-LEVEL IMMO SERVICES

High-End IMMO Solutions for Locksmiths & Auto Technicians

HIGHLIGHTS:

- IMMO ECU Reset/Adaption
- IMMO ECU Refresh/Coding
- IMMO Data Backup/Restore
- EEPROM Data Backup/Restore
- Read PIN/CS (Add Key/AKL)
- Key Learning/Remote Learning
- Universal Key Generation
- Smart & Expert Mode
- Key & Remote Learning

For BM.W

- Smart IMMO Program(EWS/3, CAS1/2/3/4)
- ECU Replacement(FEM/BDC, CAS1/2/3/3+)
- Program/Coding for IMMO Systems:
(DME, JBE, FRM, CAS, KOMBI,EGS, GWS,
ZGW, ELV and FCD)

For Ben.z

- One-Touch Key Program via OBD
- SCN Coding for IMMO Systems:
(DAS/ECU/TCU/ISM and ESL)
- 3rd Gen. IMMO CAN-line/K-line
Add Key & All Keys Lost



Figure 3.1: An in-depth look at the locksmith-level IMMO services provided by the OTOFIX IM2, detailing its capabilities for key programming and immobilizer system management.

3.2 XP1 Pro Key & Chip Programmer

The XP1 Pro is an integral part of the IM2 system, extending its capabilities for advanced key and chip programming.

- **MCU Component Types:** Supports programming for over 2342 types of Microcontroller Units.
- **EEPROM Component Types:** Compatible with over 953 types of EEPROM components.
- **Immobilizer ECU Component Types:** Works with over 257 types of immobilizer ECUs.
- **Engine ECU Component Types:** Supports over 94 types of engine ECUs.
- **Key Unlocking:** Features for unlocking various key types.
- **Frequency Detection:** Ability to detect remote key frequencies.

The graphic features a black background with a car's front end visible in the lower right. On the right side, a black XP1 Pro Key & Chip Programmer is shown, holding a silver key with a black head. The device has a small LCD screen displaying 'EEPROM' and some technical data. On the left side, there is a grid of eight blue-bordered boxes, each containing a large blue number followed by a plus sign, and a description of the component type. Below the grid, there is a blue box with the word 'Reminder:' in white, followed by two lines of white text.

XP1 PRO: KEY & CHIP PROGRAMMER

One Box Cover 99% Key & Chip Program Capabilities

2342+ MCU Component Types	953+ EEPROM Component Types
257+ Immobilizer ECU Component Types	94+ Engine ECU Component Types
82+ Airbag ECU Component Types	28+ Key Types Get Un-lock
Mercedes Infrared Key Read/Write	Remote Frequency Detection

Reminder:
ECU programming requires subs to factory software.

Figure 3.2: A closer look at the XP1 Pro Key & Chip Programmer, illustrating its extensive compatibility with various MCU, EEPROM, and ECU component types for comprehensive key programming.

3.3 ECU Coding and Service Functions

The IM2 provides advanced ECU coding capabilities and a wide array of service functions for vehicle maintenance.

- **Refresh Hidden Functions:** Activates hidden features in the vehicle's ECU.

- **Recode Replaced Components:** Programs new or replaced ECU components to match the vehicle.
- **Customize OE-Settings:** Allows modification of original equipment settings.
- **Open/Close Comfort Functions:** Controls various comfort features of the vehicle.
- **Fix Complex ECU Issues:** Addresses software-related problems within the ECU.
- **40+ Service Functions:** Includes essential services like Oil Reset, EPB Reset, TPMS Reset, BMS Reset, Brake Bleed, SAS Reset, DPF Regen, and Headlamp adjustment.



Figure 3.3: An illustration of the advanced ECU coding capabilities and the diverse range of over 40 service functions available on the OTOFIX IM2, designed to streamline vehicle maintenance.

3.4 OE All System Diagnostics and Active Tests

The diagnostic capabilities of the IM2 allow for comprehensive vehicle health checks and component testing.

- **One Touch Scan All Systems:** Quickly scans all accessible vehicle systems for diagnostic trouble codes (DTCs).
- **One Touch Clear All DTCs:** Clears all detected DTCs from the vehicle's systems.
- **AutoVIN & Scan:** Automatically identifies the vehicle and initiates a system scan.

- **Graphic Live Data:** Displays real-time sensor data in graphical format for easy analysis.
- **Bi-directional Active Tests:** Allows control of vehicle components (e.g., radiator fan, fuel pump, brakes) to verify their operational status.

OE ALL SYSTEM DIAGNOSTICS

Dealer-level Swift Scanning, Fast Pinpoint System Faults

- **One Touch Scan All Systems**
- **One Touch Clear All DTCs**
- **AutoVIN & Scan (2006+)**
- **7000+ Generic & OE DTCs**
- **Graphic Live Data**
- **Freeze Frame Data**



BI-DIRECTIONAL ACTIVE TESTS

		
Radiator Fan	Interior Lights	Exterior Lights
		
Brake	Fuel Pump	Clutch

Figure 3.4: Visual representation of the OTOFIX IM2's OE all-system diagnostic capabilities and bi-directional active tests, showcasing its ability to interact with and test various vehicle components.

3.5 Vehicle Coverage

The OTOFIX IM2 provides extensive vehicle coverage, supporting a wide range of models up to the latest years.

- **90% Key Programming via OBD:** Most key programming tasks can be performed directly through the OBD port.
- **15,000+ Models Compatible:** Broad compatibility with a vast number of vehicle models.
- **Protocol Support:** Supports D-PDU/J2534/RP1210, CAN-FD (e.g., 2020+ GM & Chrysler models), DoIP (e.g., Volvo, Land Rover/Jaguar, BMW F/G Chassis), FCA SGW (requires registered AutoAuth), and Renault SGW (requires unlocking software & device).

99% VEHICLES COVERAGE

Up to 2023/2024 Latest, One Tool to Handle All

- 90% Key Programming via OBD
- 15,000+ Models Compatible
- D-PDU/J2534/RP1210
- Ahead of Others (1~2 Years)
- Monthly Updating (Cover More)



CAN-FD

Compatible with: 2020- GM & Chrysler
Models: Onix, Tracker, Suburban, Tahoe,
Montana, Silverado, Electra, Escalade,
Sierra, Yukon, Grand Cherokee (WL)/
Wagoneer, etc.

DoIP

Compatible with:
Volvo, Land Rover/Jaguar,
BMW F/G Chassis, etc.

FCA SGW

(Require registered AutoAuth)

Compatible with:
2018-2023 Fiat, Chrysler,
Alfa Romeo, Dodge, Jeep, etc.

Renault SGW

(Require unlo-cking software & device)

Compatible with:
2015-2023 Kadjar, Megane IV, Scenic IV,
Talisman, Espace V, Koleos II, etc.

Figure 3.5: An overview of the OTOFIX IM2's extensive vehicle coverage, detailing its compatibility with various automotive communication protocols and a wide range of car models.

4. MAINTENANCE

Proper maintenance ensures the longevity and optimal performance of your OTOFIX IM2 device.

- **Software Updates:** Regularly check for and install software updates. The device includes 2 years of free updates, which are crucial for expanding vehicle coverage, adding new functions, and fixing bugs. Connect the device to a stable internet connection and navigate to the 'Update' section on the main menu.
- **Cleaning:** Keep the device and its accessories clean. Use a soft, damp cloth to wipe the screen and exterior. Avoid using abrasive cleaners or solvents.
- **Storage:** Store the device in its original carrying case when not in use to protect it from dust, moisture, and physical damage. Store in a cool, dry place.
- **Battery Care:** To prolong battery life, avoid fully discharging the battery frequently. If storing for an extended

period, ensure the battery is charged to about 50-70%.

- **Cable Inspection:** Periodically inspect all cables and connectors for signs of wear or damage. Replace any damaged cables immediately to prevent electrical issues or data transmission problems.

5. TROUBLESHOOTING

This section provides basic troubleshooting steps for common issues. For more complex problems, refer to the support section.

- **Device Not Powering On:** Ensure the battery is charged. Connect the AC/DC adapter and try again. If the issue persists, contact technical support.
- **No Communication with Vehicle:**
 - Verify that the OBDII cable is securely connected to both the vehicle's DLC (Data Link Connector) and the IM2 main unit.
 - Check the vehicle's ignition status; it should be ON or in ACC mode as required by the procedure.
 - Ensure the vehicle's battery has sufficient voltage.
 - Confirm that the vehicle model and year selected on the IM2 match the actual vehicle.
- **Software Freezes or Slow Performance:**
 - Restart the device.
 - Ensure there is sufficient storage space. Clear unnecessary files if needed.
 - Perform a software update to resolve potential bugs.
- **Key Programming Failure:**
 - Ensure the XP1 Pro programmer is correctly connected and powered.
 - Verify that the correct key type and chip are being used.
 - Follow all on-screen instructions precisely.
 - Check for any vehicle-specific requirements or security gateway limitations.

6. SPECIFICATIONS

Feature	Specification
Brand	OTOFIX
Model Number	IM2
Operating System	Android 10.0
Processor	8-core
Memory	4GB RAM & 128GB Storage

Feature	Specification
Screen Size	10.1 Inches
Screen Resolution	1920 x 1200
Battery	15,000 mAh Lithium-ion
Power Source	Battery Powered
Item Weight	9.1 Kilograms
Product Dimensions (L x W x H)	19 x 44 x 66 cm
Language	English
UPC	850051166213

7. WARRANTY AND SUPPORT

OTOFIX is committed to providing excellent customer service and support for the IM2 Key Programming Tool.

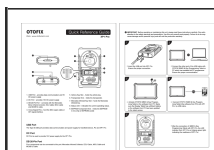
7.1 Software Updates

The OTOFIX IM2 includes **2 years of free software updates** from the date of purchase. These updates provide access to the latest vehicle coverage, new functions, and performance enhancements. After the initial 2 years, subscription renewal may be required to continue receiving updates.

7.2 Technical Support

OTOFIX offers **24/7 timely response and lifetime technical support** for the IM2 device. If you encounter any issues or have questions regarding the operation, features, or compatibility of your device, please do not hesitate to contact the OTOFIX support team. Contact information can typically be found on the OTOFIX official website or within the device's 'About' section.

Related Documents



[OTOFIX XP1 Pro Quick Reference Guide](#)

A concise guide to the OTOFIX XP1 Pro, detailing its ports, components, and initial connection steps for automotive key programming. Includes safety warnings and port descriptions.

