

Flyrivergo YZM-49

Flyrivergo YZM-49 13.7-inch Photography Turntable Instruction Manual

Model: YZM-49 | Brand: Flyrivergo

1. INTRODUCTION AND PRODUCT OVERVIEW

Thank you for choosing the Flyrivergo YZM-49 Photography Turntable. This motorized rotating display stand is designed to enhance your product photography and display needs. With its robust build, versatile features, and user-friendly controls, it provides a seamless 360-degree viewing experience for various items.

This 13.7-inch (35cm) turntable can support items up to 110 lbs (50kg), making it suitable for a wide range of products, from small appliances to heavy camera gear. It features adjustable rotation speeds, multiple rotation modes, and comes with a convenient remote control for effortless operation. The built-in 3600mAh rechargeable battery ensures portability, allowing you to use it anywhere without being tethered to a power outlet.



Figure 1: Overview of the Flyrivergo YZM-49 Turntable components including the main unit, remote control, power switch, frosted platform, and non-slip feet.

2. SETUP

2.1 Unpacking and Initial Inspection

Carefully remove all components from the packaging. Ensure all items listed in the package contents are present and undamaged. The package should include the turntable unit, remote control, power adapter, and a set of colorful backing

plates.

2.2 Charging the Battery

The turntable features a built-in 3600mAh rechargeable battery, providing up to 6 hours of continuous operation on a 1.5-hour charge. For optimal performance, fully charge the device before its first use, especially if it has not been used for an extended period.

- Connect the provided power adapter to the charging port on the turntable.
- Plug the adapter into a standard electrical outlet.
- The charging indicator light will illuminate (usually red) during charging and turn green when fully charged.



Figure 2: Battery specifications and charging time for the turntable.

2.3 Attaching Backing Plates

The turntable comes with 5 double-sided colorful plates (black and white have matte/glossy finishes, other colors are glossy). Choose a plate that best suits your product and desired aesthetic. Simply place the chosen plate on top of the turntable's rotating surface.

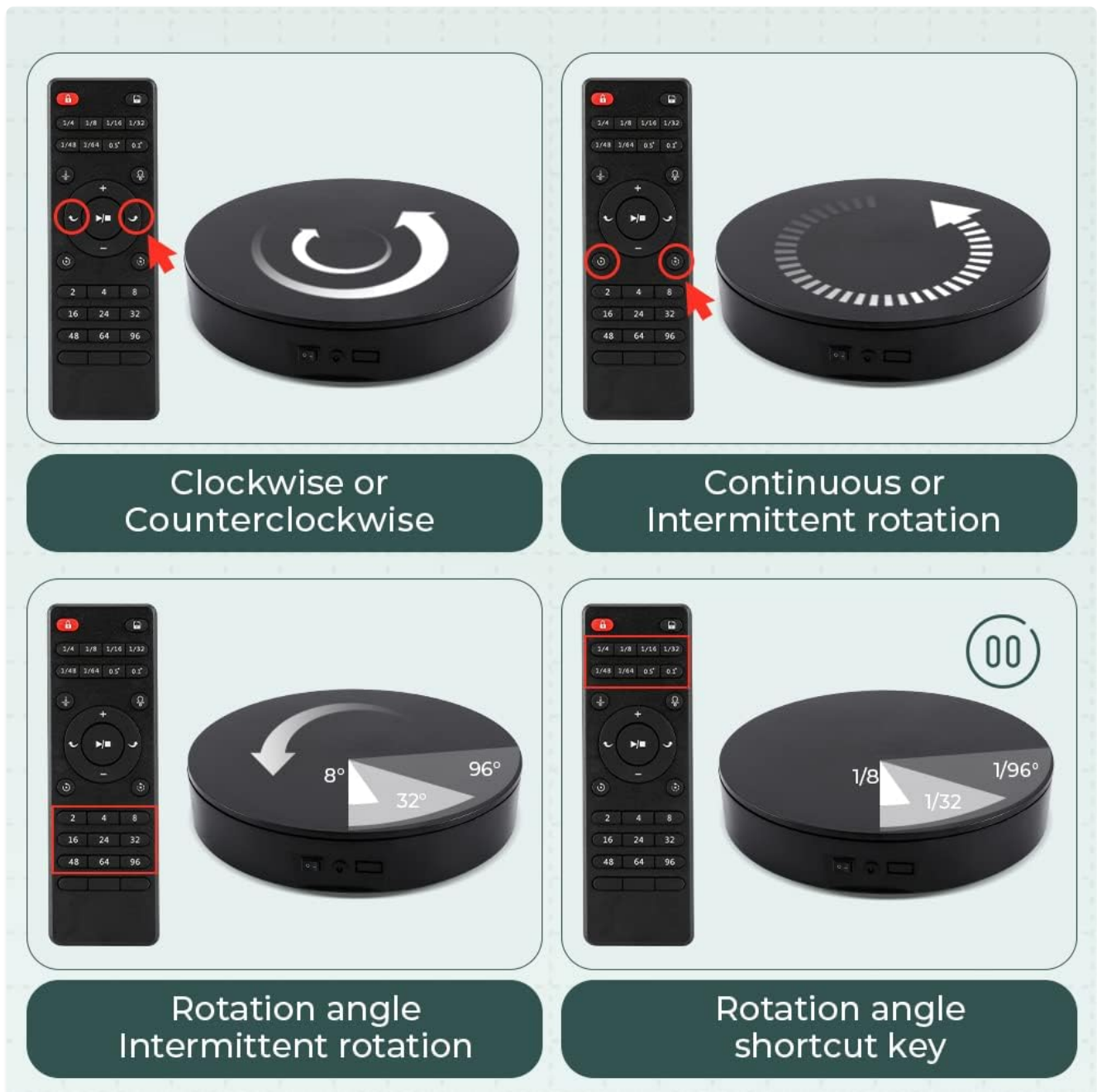


Figure 3: Remote control functions for adjusting rotation direction, mode, and angle.

3. OPERATING INSTRUCTIONS

3.1 Powering On/Off

To power on the turntable, locate the power switch on the side of the unit and toggle it to the 'ON' position. To power off, toggle the switch to the 'OFF' position.

3.2 Using the Remote Control

The remote control allows for convenient adjustment of the turntable's settings from up to 16.4 feet (5m) away. This is ideal for adjusting settings mid-shoot without disturbing your setup.

- **Start/Stop Rotation:** Press the play/pause button on the remote.
- **Change Direction:** Use the clockwise/counterclockwise buttons to reverse the rotation.
- **Adjust Speed:** Use the speed adjustment buttons (e.g., 40-90s/rev) to increase or decrease the rotation speed.

- **Select Rotation Mode:** Choose between continuous rotation or intermittent rotation modes.
- **Set Rotation Angle:** Utilize the angle increment buttons (0.1°, 15°, 45°, 90°, 180°) for precise rotational stops, useful for capturing specific product details.

Your browser does not support the video tag.

Video 1: This video demonstrates the various rotation modes and speed adjustments available with the remote control for the Flyrivergo YZM-49 turntable.

Your browser does not support the video tag.

Video 2: A helpful tip on effectively using the remote control with the Flyrivergo YZM-49 turntable for precise adjustments.

4. MAINTENANCE

4.1 Cleaning

To maintain the appearance and functionality of your turntable, regularly wipe the surface with a soft, dry cloth. For stubborn marks, a slightly damp cloth can be used, followed by immediate drying. Avoid abrasive cleaners or solvents.

4.2 Storage

When not in use, store the turntable in a cool, dry place away from direct sunlight and extreme temperatures. If storing for an extended period, ensure the battery is partially charged (around 50%) to prolong its lifespan.

5. TROUBLESHOOTING

- **Turntable not rotating:**
 - Ensure the power switch is in the 'ON' position.
 - Check if the battery is charged. If not, connect the power adapter.
 - Verify that the remote control batteries are functional and the remote is within range.
- **Remote control not responding:**
 - Replace the remote control batteries.
 - Ensure there are no obstructions between the remote and the turntable.
 - Confirm the turntable is powered on.
- **Unusual noise or shaking:**
 - Ensure the product placed on the turntable does not exceed the maximum weight capacity (110 lbs / 50kg).
 - Distribute the weight evenly on the turntable surface.
 - Check for any foreign objects obstructing the rotation mechanism.

MATCH YOUR EXHIBIT COLORS

Water proof, dustproof and colorful



TIPS: ⚠

Only black and white are double-sided (glossy and matte)
Other colors are glossy materials

Figure 4: The turntable features anti-shake and non-slip properties for stable operation.



Figure 5: Noise level comparison, indicating the turntable operates quietly at ≤50db.

6. SPECIFICATIONS

Feature	Detail
Model Number	YZM-49
Brand	Flyrivergo
Material	ABS Plastic
Color	Black
Item Diameter	13.7 Inches (35cm)
Max Load Capacity	110 lbs (50kg)

Feature	Detail
Rotation Speed	40-90 seconds per revolution (adjustable)
Battery	3600mAh Lithium Ion (rechargeable, included)
Charging Time	Approx. 1.5 hours
Continuous Working Time	Up to 6 hours
Noise Level	≤50db
Remote Control Range	16.4 ft (5m)
Rotation Angle Increments	0.1°, 15°, 45°, 90°, 180°
Package Dimensions	16 x 15 x 4 inches
Item Weight	4.79 pounds (2.18 kg)

7. WARRANTY & SUPPORT

The Flyrivergo YZM-49 Photography Turntable comes with a **1-year official warranty** covering missing parts or non-functional issues. For any technical assistance or inquiries, **24/7 online technical guidance** is available. Our product also includes basic overload protection for safe daily use.

Please refer to the contact information provided with your purchase for customer support details.