

manuals.plus /

- › [HOMEPILOT](#) /
- › [HOMEPILOT RolloTron Pure Electric Belt Winder User Manual](#)

## HOMEPILOT RolloTron pure

# HOMEPILOT RolloTron Pure Electric Belt Winder User Manual

Model: RolloTron pure

## 1. INTRODUCTION

---

Thank you for choosing the HOMEPILOT RolloTron Pure Electric Belt Winder. This device is designed to provide comfortable and automated control for your roller blinds. It allows for both manual operation directly on the unit and extensive automatic functions, enhancing the convenience of your home.

# HOME PILOT

## GURTWICKLER

ROLLOTRON  
PURE

ROLLOTRON  
FLUSH-MOUNTED  
BELT WINDER PURE



45 KG  
≈ 6 M<sup>2</sup>



23 MM  
MAXI



GROßE TASTEN  
LARGE BUTTONS



MADE IN GERMANY



Figure 1: HOMEPILOT RolloTron Pure Electric Belt Winder. This image shows the front of the white belt winder with its large up and down buttons, and the HomePilot logo. A brown cardboard-like background on the left highlights key features such as 45 kg output power and 23 mm belt width.

## 2. SAFETY INSTRUCTIONS

---

Please read these safety instructions carefully before installation and operation to ensure safe and proper use of the device. Keep this manual for future reference.

- Installation must be performed by a qualified electrician or a person with appropriate technical knowledge, in accordance with local electrical codes and regulations.
- Ensure the power supply is disconnected before beginning any installation or maintenance work.
- Do not expose the device to moisture, extreme temperatures, or direct sunlight.
- Do not attempt to open or repair the device yourself. Refer all servicing to qualified personnel.
- This device is designed for indoor use only.
- Keep packaging materials out of reach of children to prevent suffocation hazards.

## 3. PACKAGE CONTENTS

---

Verify that all components are present in the package:

- HOMEPILOT RolloTron Pure Electric Belt Winder (1 unit)
- Instruction Manual (this document)
- Mounting Screws (if included, refer to packaging)
- Tape collector (as per specifications)

If any parts are missing or damaged, please contact your retailer or HOMEPILOT customer support.

## 4. SETUP AND INSTALLATION

---

The RolloTron Pure is designed for easy installation in existing roller blind inserts, making it ideal for renovations and home updates. Follow these steps for installation:

1. **Preparation:** Ensure the power supply to the roller blind area is turned off. Remove the old manual belt winder from the wall.
2. **Belt Insertion:** Carefully feed the roller blind belt into the new RolloTron Pure device. Ensure it is properly seated in the belt guide.
3. **Mounting:** Position the RolloTron Pure into the wall opening. Secure it firmly using the provided mounting screws. Ensure the device is level and flush with the wall surface.
4. **Power Connection:** Connect the power cable of the RolloTron Pure to a suitable power outlet.
5. **Initial Programming:** Once powered, follow the specific instructions in the detailed manual (not included here, but typically provided with the product) to program the upper and lower end points of your roller blind. This is crucial for correct operation.



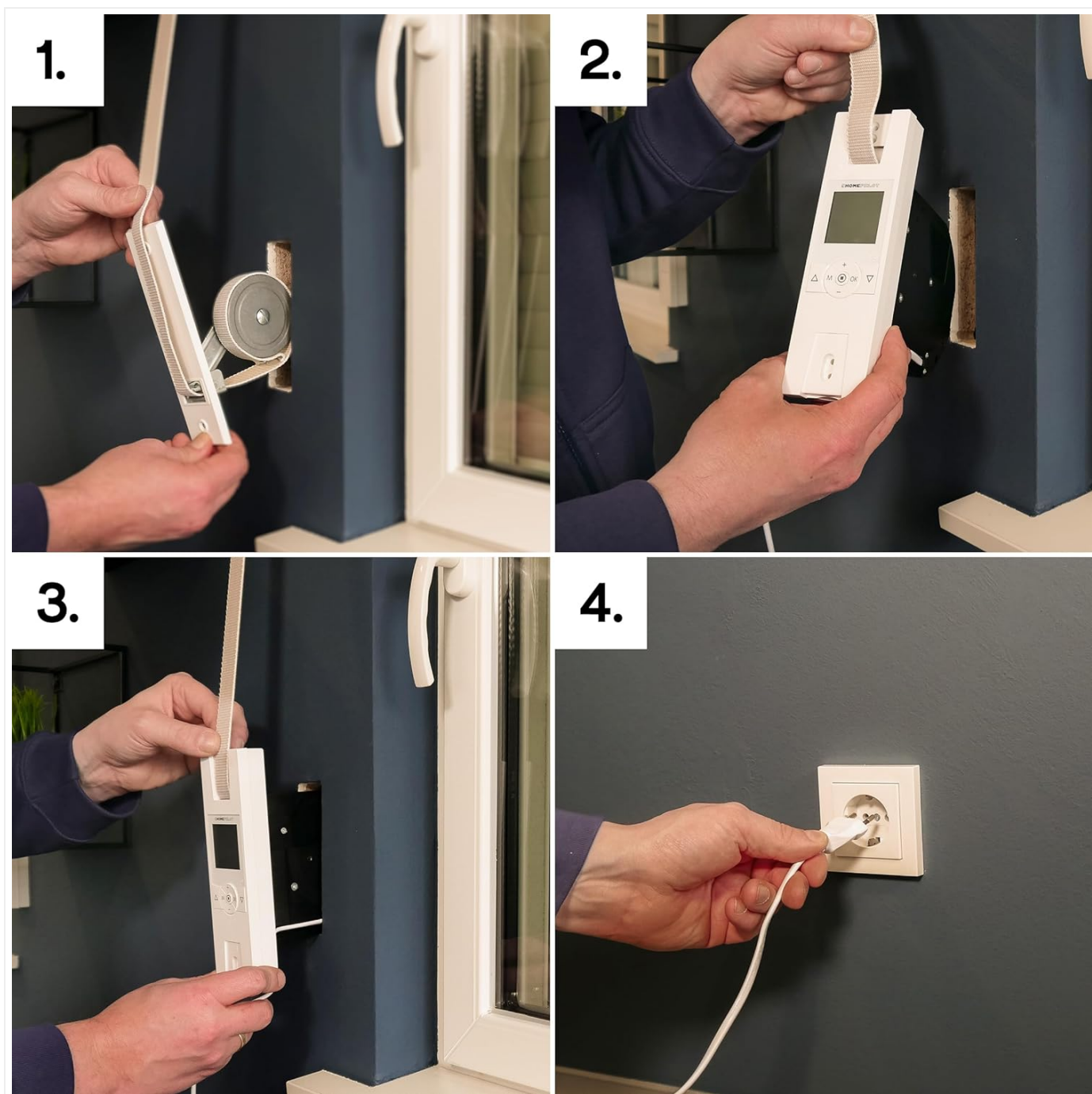


Figure 2: Installation Process. This image shows a four-step visual guide for installing the RolloTron Pure. Step 1 shows the old belt winder being removed. Step 2 shows the new device being inserted into the wall opening. Step 3 shows the device being pushed fully into place. Step 4 shows the power cable being plugged into a wall socket.

For detailed programming instructions, refer to the comprehensive manual supplied with your product.

## 5. OPERATING INSTRUCTIONS

---

The RolloTron Pure offers both manual and automatic control options:

### 5.1 Manual Operation

- **Up Button (▲):** Press this button to raise the roller blind. Release to stop.
- **Down Button (▼):** Press this button to lower the roller blind. Release to stop.

### 5.2 Automatic Functions

The device features extensive automatic functions for convenient control:

- **Time-Automatic:** Program specific times for the roller blind to open and close daily.
- **Astro Function:** Utilize the built-in astro function to automatically control the roller blind based on sunrise and sunset times in your location.
- **Smart Home Integration (Optional):** While the RolloTron Pure can operate independently, it can also be integrated into a broader HomePilot smart home system for advanced automations, including weather or solar sensor integration and fire protection features.

Refer to the full product manual for detailed instructions on setting up and customizing these automatic functions.

## 6. MAINTENANCE

The HOMEPILOT RolloTron Pure is designed for low maintenance. Follow these general guidelines:

- **Cleaning:** Clean the surface of the device with a soft, dry cloth. Do not use abrasive cleaners, solvents, or excessive moisture, as these can damage the unit.
- **Belt Inspection:** Periodically inspect the roller blind belt for any signs of wear, fraying, or damage. A damaged belt can affect the performance and safety of the device.
- **No User-Serviceable Parts:** The internal components of the device are not user-serviceable. Do not attempt to open the casing.

## 7. TROUBLESHOOTING

If you encounter issues with your RolloTron Pure, try the following common troubleshooting steps:

Problem	Possible Cause	Solution
Device does not respond.	No power supply.	Check if the device is properly plugged into a working power outlet. Check circuit breaker.
Roller blind does not move or moves partially.	End points not programmed correctly; Obstruction in roller blind path; Belt is stuck or damaged.	Reprogram the end points according to the full manual. Check for any physical obstructions. Inspect the belt for damage or entanglement.
Automatic functions not working.	Incorrect time settings; Automatic mode not activated.	Verify the current time and programmed times. Ensure the automatic mode is enabled on the device.
Unusual noises during operation.	Internal mechanical issue; Obstruction.	Ensure there are no obstructions. If noises persist, discontinue use and contact customer support.

If these steps do not resolve the issue, please contact HOMEPILOT customer support for further assistance.

## 8. TECHNICAL SPECIFICATIONS

Feature	Detail
Model Number	RolloTron pure
Part Number	10112345
Brand	HOMEPILOT

Feature	Detail
Dimensions (L x W x H)	21.08 x 6.06 x 16.6 cm
Weight	800 g
Color	White
Material	Plastic
Wattage	70 watts
Operating Voltage	230 Volts
Current Rating	1 Amps
Switch Type	Rocker (1-way)
Plug Profile	Wall Mount
Included Components	Tape collector
Certifications	CE

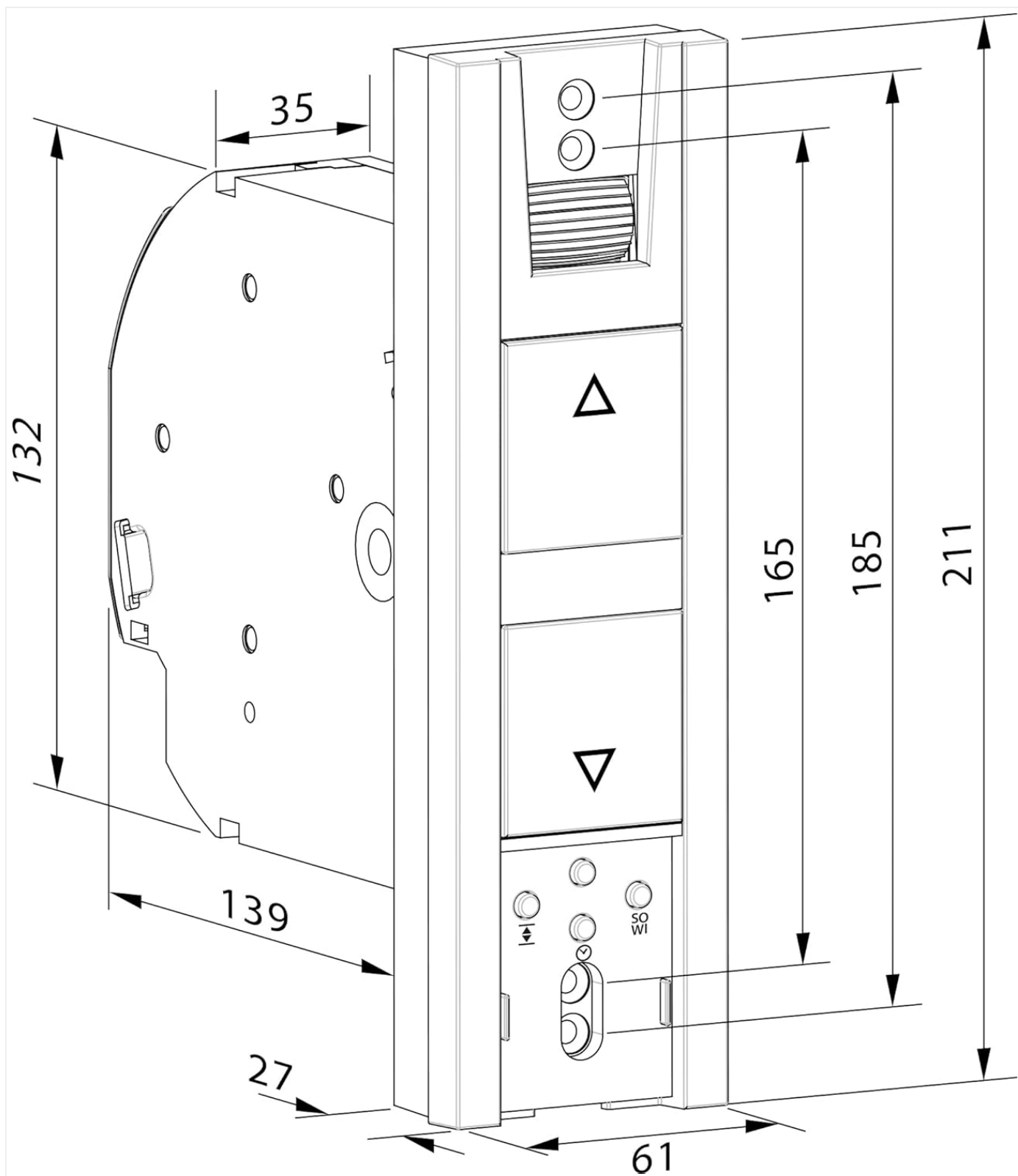


Figure 3: Technical Dimensions. This image displays a detailed line drawing of the RolloTron Pure with various dimensions in millimeters, including height, width, and depth measurements, crucial for installation planning.

## 9. WARRANTY AND SUPPORT

For information regarding warranty terms and conditions, please refer to the warranty card included with your product or visit the official HOMEPILOT website. For technical support, troubleshooting assistance beyond this manual, or spare parts, please contact HOMEPILOT customer service directly.

**Manufacturer:** Homepilot

**Website:** Please refer to the official HOMEPILOT website for contact details and support resources.



Related Documents - RolloTron pure

	<p><a href="#">HOMEPILOT Roller Shutter Motor Classic Installation and Operation Manual</a></p> <p>Comprehensive manual for HOMEPILOT Roller Shutter Motor Classic series (s10, m10, m20), covering installation, electrical connection, safety, and operation. Includes technical specifications and troubleshooting.</p>
	<p><a href="#">Homepilot 16991002 Remote Control Keyfob Quick User Guide</a></p> <p>Step-by-step instructions for programming the Homepilot 16991002 remote control keyfob for garage door openers. Find full manuals and support at <a href="#">service.homepilot-smarthome.com</a>.</p>
	<p><a href="#">HOMEPILOT Rollladenmotor classic: Betriebsanleitung und Montageanleitung</a></p> <p>Umfassende Betriebsanleitung und Montageanleitung für den HOMEPILOT Rollladenmotor classic (Serien s10, m10, m20). Enthält Sicherheitshinweise, Installationsschritte, Funktionsbeschreibungen und technische Daten.</p>
	<p><a href="#">Rademacher HomePilot Commissioning Guide: Smart Home Setup</a></p> <p>Comprehensive guide to commissioning the Rademacher HomePilot smart home system and integrating devices like the RolloTron Belt Winder for automated home control.</p>