

Manuals+

[Q & A](#) | [Deep Search](#) | [Upload](#)

Manuals.plus /

- › [Katerk](#) /
- › Katerk Bit Holder Keychain & Right Angle Drill Attachment User Manual

Katerk Katerk-34599

Katerk Bit Holder Keychain & Right Angle Drill Attachment User Manual

Model: Katerk-34599

INTRODUCTION

This user manual provides comprehensive instructions for the Katerk Bit Holder Keychain and 105-degree Right Angle Drill Attachment. Designed for compatibility, durability, and ease of use, this tool set is an essential addition for household tasks, workplace projects, and industrial applications. Please read this manual thoroughly before use to ensure proper operation and maintenance.

PRODUCT OVERVIEW

The Katerk Bit Holder Keychain and Right Angle Drill Attachment is a versatile tool set designed to streamline your work. It includes multiple bit holders and a specialized right-angle adapter for hard-to-reach areas.



Figure 1: Katerk Bit Holder Keychain with six colorful bit holders and a 105-degree right angle drill attachment.

105° Right Angle Drill

perfect for tight and hard-to-reach spaces



Figure 2: The 105-degree Right Angle Drill Attachment being used with a drill to access a screw in a tight corner, demonstrating its utility for hard-to-reach spaces.

Key Features:

- **Great Compatibility and Convenience:** Designed for 1/4 inch hex shank drill bits, compatible with most 1/4 fast hex handles, hex sockets, electric screwdrivers, and handheld screwdrivers.
- **Secure and Durable:** Features a secure backup nut design and high-quality steel ball rolling design for firm bit retention. Constructed from high-quality alloy material for long lifespan.
- **Easy One-Handed Operation:** Allows for single-handed bit changes and multi-color design for quick identification.
- **Great for Tight Spaces:** The 105-degree right angle drill adapter is ideal for hard-to-reach corners, extending the reach of cordless screwdrivers.

SETUP

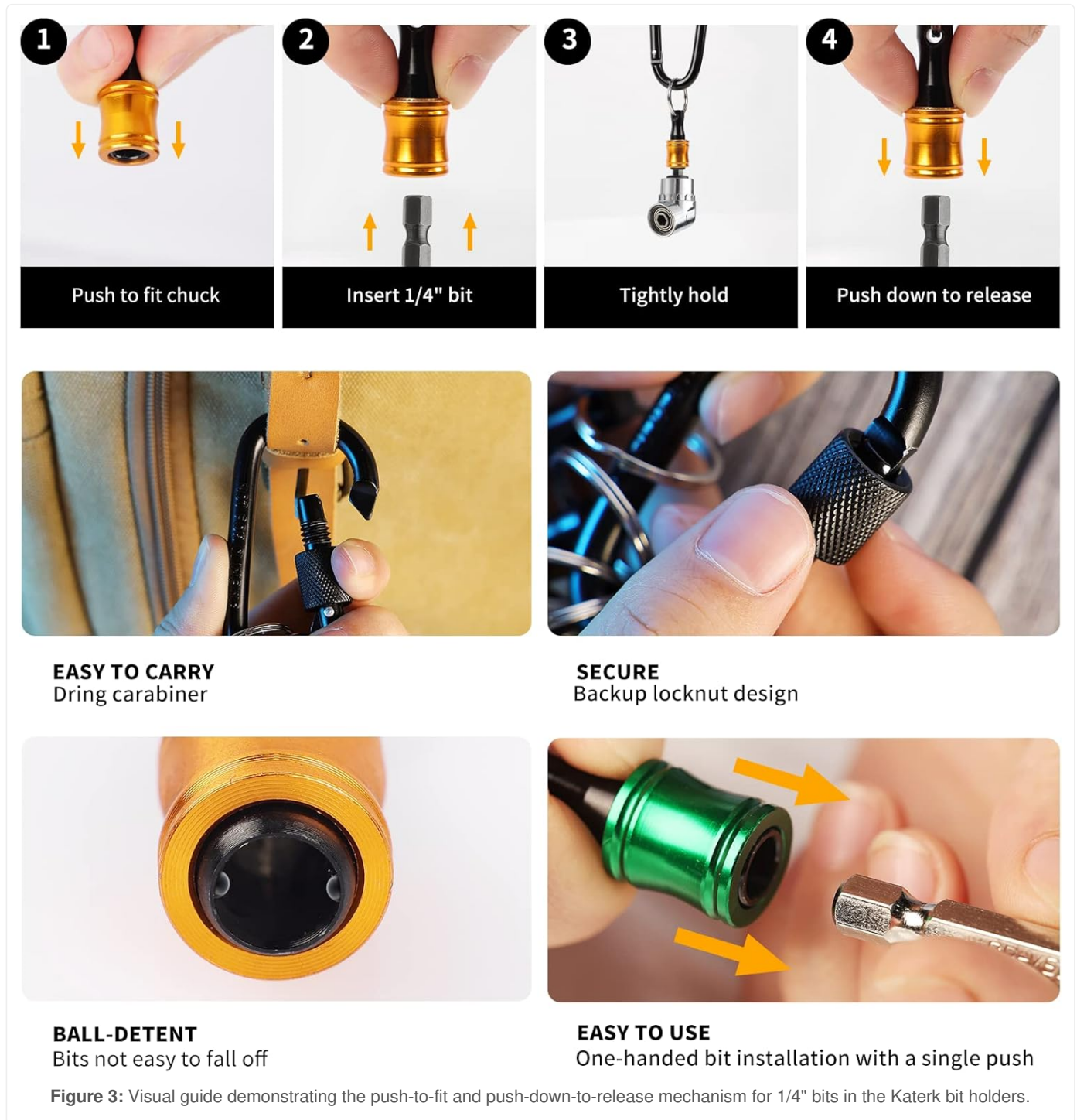
Before using your Katerk Bit Holder Keychain and Right Angle Drill Attachment, ensure all components are present and in good condition.

Attaching Bit Holders to Carabiner:

1. Unscrew the locking mechanism on the carabiner to open the gate.
2. Slide the key rings of the individual bit holders onto the carabiner.
3. Screw the locking mechanism back into place to secure the bit holders.

Inserting Drill Bits into Holders:

1. Hold the bit holder firmly.
2. Push the colored collar of the bit holder forward (towards the opening).
3. Insert a 1/4 inch hex shank drill bit into the opening.
4. Release the collar. The steel ball rolling design will securely lock the bit in place.



OPERATING INSTRUCTIONS

Using the Bit Holders:

The individual bit holders allow for quick and easy access to your most frequently used bits. Their compact size makes them ideal for carrying on a tool belt, backpack, or keychain.

Your browser does not support the video tag.

Video 1: Demonstrates the convenience and versatility of the Katerk Bit Holder Keychain and Right Angle Drill in various work scenarios, including easy bit changes and portability.

Using the 105-Degree Right Angle Drill Attachment:

This attachment is designed for accessing screws or drilling in tight, confined spaces where a standard drill cannot reach directly.

1. Insert the 1/4 inch hex shank of the right angle drill attachment into your electric drill, rechargeable electric drill, or manual wrench chuck.
2. Ensure the attachment is securely fastened in the chuck.
3. Insert the desired 1/4 inch hex shank drill bit or screwdriver bit into the right angle attachment.
4. Position the attachment to reach the tight space and perform your task. The 360-degree parallel adjustment allows for optimal positioning.

Your browser does not support the video tag.

Video 2: Illustrates the functionality of the screwdriver bit holders and specifically highlights the use of the 105-degree right angle drill attachment for working in confined areas.

MAINTENANCE

To ensure the longevity and optimal performance of your Katerk tools, follow these maintenance guidelines:

- **Cleaning:** After each use, wipe down the bit holders and right angle attachment with a clean, dry cloth to remove any dust, dirt, or debris.
- **Lubrication:** For the bit holders, apply a light spray of machinery oil to their inner workings periodically, especially if you notice any stiffness or "locking up" during bit insertion or removal. This will ensure smooth operation.
- **Storage:** Store the tools in a dry environment to prevent rust and corrosion. The carabiner allows for convenient hanging storage, keeping your bits organized and easily accessible.
- **Inspection:** Regularly inspect all components for any signs of wear, damage, or deformation. Replace any damaged parts immediately to prevent injury or further damage to the tool.

TROUBLESHOOTING

Problem	Possible Cause	Solution
Bit holder feels stiff or "locks up" when inserting/removing bits.	Lack of lubrication or accumulation of debris in the mechanism.	Apply a light spray of machinery oil to the inner workings of the bit holder. Clean any visible debris.
Bits are not securely held in the bit holder.	Worn internal mechanism or incorrect bit size.	Ensure you are using 1/4 inch hex shank bits. If the issue persists, the internal mechanism may be worn; consider replacing the bit holder.
Right angle drill attachment does not fit drill chuck.	Incompatible chuck size.	Ensure your drill chuck is compatible with 1/4 inch hex shanks.

SPECIFICATIONS

Feature	Detail
Brand	Katerk
Model Number	Katerk-34599
Material	Metal (High-quality Aluminum Alloy)
Drive System	Hex
Finish Type	Powder Coated
Number of Pieces	6 (Bit Holders)
Compatible Bit Shank Style	1/4 inch Hex Shank
Item Weight	5.3 ounces
Package Dimensions	4.57 x 3.54 x 0.94 inches
Country of Origin	China

WARRANTY AND SUPPORT

For warranty information or technical support, please refer to the product packaging or contact Katerk customer service directly. Specific warranty terms and support contact details are typically provided with your purchase.