

metapen A14

# Metapen Pencil A14 User Manual

Model: A14 | Brand: metapen

## 1. PRODUCT OVERVIEW

The Metapen Pencil A14 is a wireless magnetic charging stylus pen designed to enhance your iPad experience. It offers precise control, quick responsiveness, and advanced features like palm rejection and hotkey shortcuts, making it ideal for note-taking, drawing, and navigation.



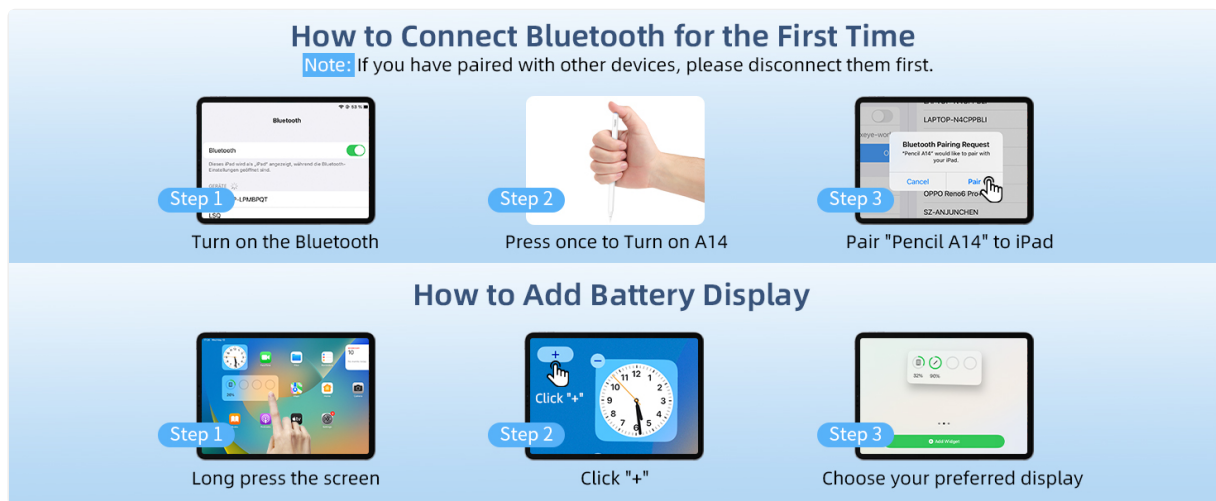
The Metapen Pencil A14, a sleek white stylus pen.

## 2. COMPATIBILITY

The Metapen Pencil A14 is specifically designed for certain iPad models to ensure full functionality, including wireless charging. Please verify your iPad model before use.

- iPad Pro 12.9" (6th, 5th, 4th, 3rd generation)
- iPad Pro 11" (4th, 3rd, 2nd, 1st Gen)
- iPad Air (5th, 4th Gen)
- iPad Mini (6th Gen)

**Note:** This stylus is NOT compatible with iPad Pro M4 2024, iPad Air M2 2024 3rd Gen, iPad 6/7/8/9/10th Gen, or iPad Mini 5/7th Gen.



Detailed compatibility chart for Metapen Pencil A14.

## 3. SETUP

### 3.1. What's in the Box

- Metapen Pencil A14 Stylus
- Replacement Tips (2 included)
- User Manual

### 3.2. Initial Pairing (Bluetooth)

1. Ensure your iPad's Bluetooth is turned ON (Settings > Bluetooth).
2. Press the top button of the Metapen Pencil A14 once to turn it on.
3. On your iPad, a Bluetooth Pairing Request will appear. Tap 'Pair' to connect.

If you have previously paired with other devices, please disconnect them first.

### 3.3. Adding Battery Display Widget

To monitor your Metapen Pencil A14's battery level directly on your iPad:

1. Long press on any application icon on your home screen.
2. Tap 'Edit Home Page'.
3. Tap the '+' icon in the top-left corner.

4. Search for 'Batteries' and select the Batteries Widget.
5. Choose your preferred display size and add it to your home screen.

## 4. OPERATING INSTRUCTIONS

---

### 4.1. Wireless Magnetic Charging

The Metapen Pencil A14 supports wireless magnetic charging. Simply attach the stylus to the magnetic charging area on your compatible iPad. Two strong magnets ensure a secure connection.

- **Full Charge Time:** Approximately 90 minutes.
- **Working Time:** Up to 8 hours of continuous use.
- **Automatic Sleep:** After 5 minutes of inactivity to conserve battery.
- **Standby Time:** Up to 365 days.

The LED indicator on the stylus provides battery status:

- **Breathing Red:** Charging
- **Solid Red:** 1% - 20% battery
- **Solid Blue:** 20% - 60% battery
- **Solid White:** 60% - 100% battery
- **Solid White:** Fully charged



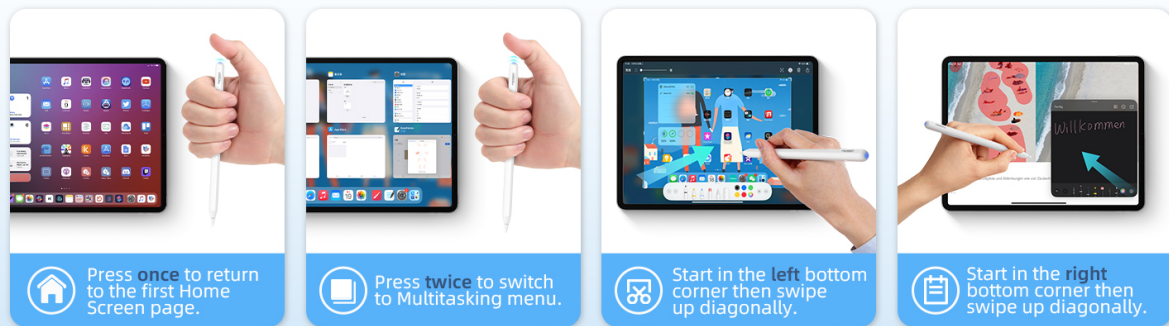
Wireless magnetic charging and battery status indicators.

### 4.2. Hotkey Shortcuts

Utilize the top button for quick navigation and multitasking:

- **Press once:** Return to the Home Screen page.
- **Press twice:** Switch to the Multitasking menu (App Switcher).

## Get More Done in Less Time



Hotkey shortcuts for efficient iPad navigation.

### 4.3. Writing and Drawing Experience

The Metapen Pencil A14 offers a smooth and precise writing and drawing experience:

- **0.1mm Pixel Precision:** Ensures accurate and detailed input.
- **No Lag:** Enjoy real-time responsiveness without delays.
- **No Breakpoint:** Consistent line drawing without interruptions.
- **Tilt Sensitivity:** Adjust line thickness and shading by tilting the pen, similar to a graphite pencil (works with 'Pencil Brush' tools).

# Make Every Stroke Count

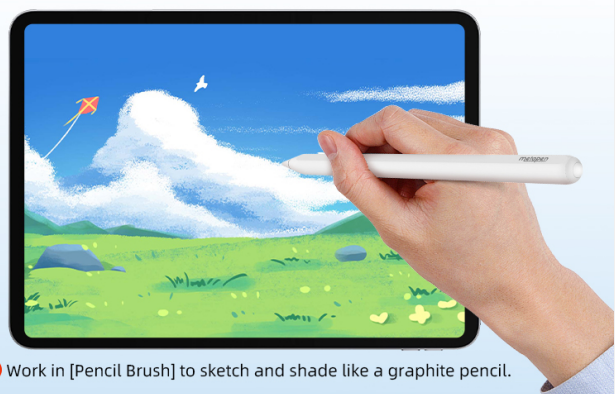
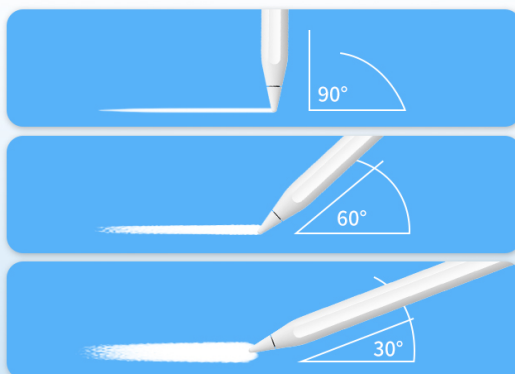
Mastering every little detail in every line or dot.



Experience smooth and precise strokes with no lag or breakpoints.

## Essential Helper for Vivid Works

The smaller the tilt angle, the thicker the line.



Work in [Pencil Brush] to sketch and shade like a graphite pencil.

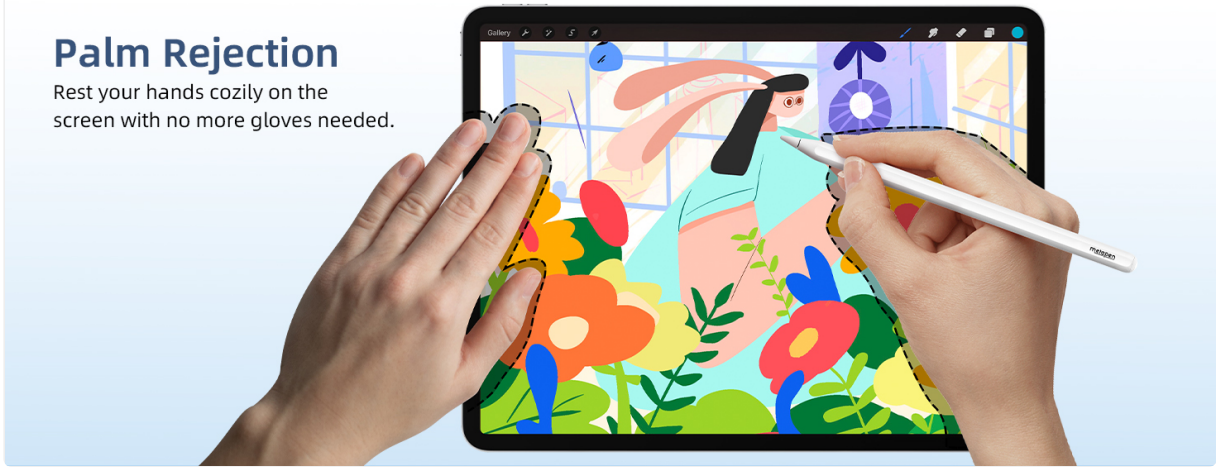
Utilize tilt sensitivity for varied line thickness and shading.

## 4.4. Palm Rejection

Rest your hand comfortably on the iPad screen while writing or drawing. The advanced palm rejection technology ensures that only the stylus input is registered, preventing accidental marks from your palm.

## Palm Rejection

Rest your hands cozily on the screen with no more gloves needed.



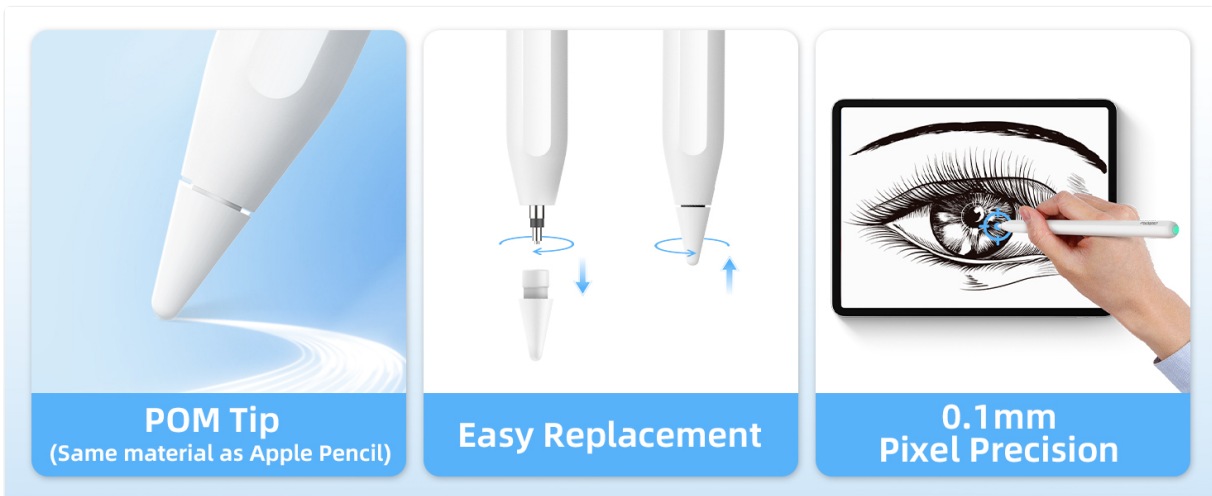
Enjoy comfortable writing and drawing with effective palm rejection.

## 5. MAINTENANCE

### 5.1. Tip Replacement

The Metapen Pencil A14 uses POM tips, which are the same material as Apple Pencil tips, ensuring durability and a familiar feel. Replacement is easy:

1. Gently twist the old tip counter-clockwise to remove it.
2. Align the new tip and twist clockwise until secure. Do not overtighten.



Easy tip replacement for continued optimal performance.

### 5.2. Care and Cleaning

The stylus features a moisture-proof paint coating to prevent discoloration or paint loss from sweat. To clean, gently wipe the stylus with a soft, dry cloth. Avoid using harsh chemicals or abrasive materials.

## Never Discolor or Lose Paint by Sweat



The moisture-proof coating helps maintain the stylus's appearance.

### 6. TROUBLESHOOTING

- **Stylus not connecting/pairing:** Ensure Bluetooth is enabled on your iPad. Forget any previously paired styluses in Bluetooth settings and try pairing again. Make sure the Metapen Pencil A14 is charged.
- **Charging issues:** Verify the stylus is correctly aligned on the iPad's magnetic charging area. Ensure your iPad is awake or in a state that allows accessory charging. Remove any thick cases that might interfere with magnetic connection.
- **Inaccurate or unresponsive input:** Check if the stylus tip is securely attached. Replace the tip if it appears worn or damaged. Ensure your iPad screen is clean.
- **Battery drains quickly:** Confirm the stylus is entering automatic sleep mode when not in use. If the battery widget shows constant activity when attached but not in use, slightly adjust its position on the iPad to ensure it's not constantly 'waking up' or attempting to connect.

### 7. SPECIFICATIONS

Feature	Detail
Product Dimensions	6.53 x 0.35 x 0.35 inches
Item Weight	0.529 ounces (15 Grams)
Model Number	A14
Color	Pearl White
Material	Aluminum
Charging Time	90 minutes
Battery Type	1 CR5 battery (included)

### 8. WARRANTY AND SUPPORT

Metapen is committed to providing excellent customer service and product support.

- **2 Years Care:** Enjoy peace of mind with our 2-year product care.
- **30 Days Replacement:** Hassle-free replacement within 30 days of purchase.
- **7x24 Hours Customer Service:** Our support team is available around the clock to assist you.

For any inquiries or support, please contact us at [Support@metapen.com](mailto:Support@metapen.com).



Metapen's commitment to customer satisfaction.