

Razer RZ01-04660100-R3U1

# Razer Cobra Pro Wireless Gaming Mouse Instruction Manual

Model: RZ01-04660100-R3U1

Introduction

What's in the Box

Setup

Operating

Maintenance

Troubleshooting

Specifications

Warranty & Support

## 1. INTRODUCTION

The Razer Cobra Pro is a customizable wireless gaming mouse designed for high-performance gameplay. It features advanced optical sensor technology, customizable controls, vibrant Chroma RGB lighting, and versatile connectivity options to enhance your gaming experience.

# "Razer's best all-around gaming mice yet."

- WINDOWS CENTRAL



*Image: Razer Cobra Pro Wireless Gaming Mouse showcasing its vibrant RGB lighting on a dark mouse pad.*

## 2. WHAT'S IN THE BOX

---

- Razer Cobra Pro Wireless Gaming Mouse
- Wireless USB dongle + USB dongle adapter
- USB Type A to USB Type C Speedflex cable
- Important Product Information Guide

## 3. SETUP

---

### 3.1. Charging Your Mouse

For optimal performance, fully charge the mouse before first use. Connect the included USB Type A to USB Type C Speedflex cable to a USB port on your computer and to the USB Type C port on the mouse.

# VERSATILE CONNECTIVITY AND POWER

Bluetooth with USB Type C and  
wireless charging



*Image: Razer Cobra Pro mouse connected via USB-C cable for charging, or placed on a wireless charging dock (sold separately).*

## 3.2. Connecting Your Mouse

The Razer Cobra Pro offers three connectivity modes: Razer HyperSpeed Wireless (2.4GHz), Bluetooth, and Wired (USB Type C).

### 3.2.1. Razer HyperSpeed Wireless (2.4GHz) Mode

1. Insert the Wireless USB dongle into an available USB Type A port on your computer. For extended range, use the USB dongle adapter with the Speedflex cable.
2. Slide the switch on the bottom of the mouse to the '2.4' position.
3. Your Razer Cobra Pro is now ready for use in Razer HyperSpeed Wireless mode.



# RAZER HYPERSPEED WIRELESS

For high-performance, low-latency gaming



*Image: Diagram illustrating the connection of the Razer HyperSpeed Wireless dongle to a computer for wireless mouse operation.*

### 3.2.2. Bluetooth Mode

1. Slide the switch on the bottom of the mouse to the 'BT' position.
2. The mouse will enter pairing mode (indicated by a blinking blue LED).
3. On your computer, go to Bluetooth settings and select 'Razer Cobra Pro' to pair.

### 3.2.3. Wired Mode

Connect the USB Type A to USB Type C Speedflex cable directly from your computer to the mouse. The mouse will automatically switch to wired mode.

## 3.3. Installing Razer Synapse Software

To unlock advanced customization options, lighting effects, and performance settings, install the Razer Synapse software from the official Razer website. Follow the on-screen prompts for installation.

## 4. OPERATING

#### 4.1. Customizable Controls

The Razer Cobra Pro features 10 customizable controls, allowing you to remap essential commands or assign complex macros. These controls can be configured via Razer Synapse.

## 10 CUSTOMIZABLE CONTROLS

For advanced macros across  
5 onboard profiles



1, 2. Left/Right Mouse Click  
3, 4, 5. Scroll Up/Click/Down  
6, 7. DPI Cycle Up/Down Button

8, 9. Mouse Button 4/5  
10. Profile Button  
(back of mouse)



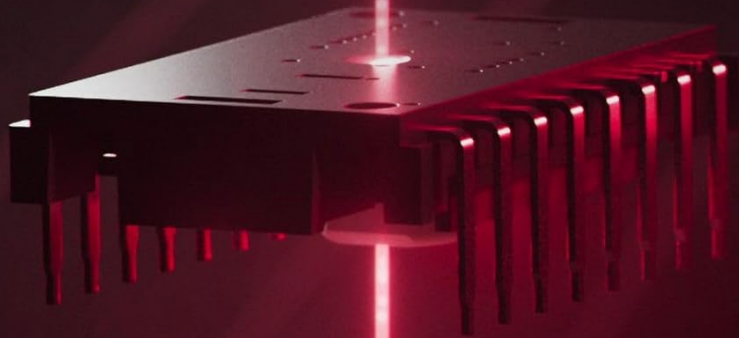
*Image: Diagram highlighting the 10 customizable control points on the Razer Cobra Pro mouse, including left/right click, scroll up/down/click, DPI cycle buttons, side buttons, and a profile button.*

#### 4.2. DPI Settings (Sensitivity)

The mouse is equipped with a Razer™ Focus Pro 30K Optical Sensor, providing precise tracking. You can set up to 5 sensitivity stages (DPI levels) via Razer Synapse, ranging from 100 to 30,000 DPI. Use the dedicated DPI cycle buttons on the mouse to switch between these stages.

# RAZER FOCUS PRO 30K OPTICAL SENSOR

For best-in-class precision



*Image: An illustration of the Razer™ Focus Pro 30K Optical Sensor, emphasizing its precision tracking capabilities.*

## 4.3. Polling Rate

The Razer Cobra Pro supports Razer™ HyperSpeed Wireless technology for ultra-responsive gameplay. The standard polling rate is 1000 Hz. For even faster response, you can upgrade to 4K polling with the Razer Mouse Dock Pro or HyperPolling Wireless Dongle (sold separately).

## 4.4. Chroma RGB Lighting

Personalize your mouse with 11 individually customizable Chroma RGB lighting zones, offering 16.8 million colors and various effects. Lighting effects can be synchronized with Chroma-integrated games and other Razer Chroma-enabled devices through Razer Synapse.



# 11-ZONE CHROMA LIGHTING WITH UNDERGLOW

Powered by Razer Chroma RGB



*Image: Razer Cobra Pro mouse displaying its vibrant 11-zone Chroma RGB lighting with underglow effects.*

## 4.5. Onboard Memory Profiles

Save up to 5 preset game profiles directly onto the mouse's onboard memory via Razer Synapse. Easily swap between these profiles using the dedicated profile button located on the bottom of the mouse.





*Image: Bottom view of the Razer Cobra Pro mouse, highlighting the profile button, optical sensor, and connectivity mode switch.*

## 5. MAINTENANCE



---

## 5.1. Cleaning and Care

To maintain optimal performance, regularly clean your mouse with a soft, dry cloth. Avoid using harsh chemicals or abrasive materials. The integrated rubber side grips are designed for durability but should be kept clean to prevent wear.

## 5.2. Battery Life

The Razer Cobra Pro offers extended battery life: up to 100 hours on HyperSpeed Wireless or up to 170 hours on Bluetooth. Battery life can vary based on usage, lighting settings, and polling rate. Charge the mouse using the provided USB Type C cable or a compatible wireless charging solution.

# 6. TROUBLESHOOTING

---

## 6.1. Connectivity Issues

If you experience connectivity issues, ensure the mouse is fully charged and the correct connectivity mode (2.4GHz or Bluetooth) is selected on the bottom switch. For HyperSpeed Wireless, ensure the USB dongle is securely connected to your computer. For Bluetooth, verify that the mouse is paired correctly in your computer's Bluetooth settings.

## 6.2. Performance Optimization

To improve mouse accuracy, disable the "Enhance pointer precision" option in your Windows mouse settings. Further optimize performance and customize settings using the Razer Synapse App.

## 6.3. Optical Mouse Switches Gen-3

The mouse features Razer™ Optical Mouse Switches Gen-3, designed for unrivalled durability (90-million click lifecycle) and speed (0.2ms actuation) while eliminating double-clicking issues common with mechanical switches.

# RAZER OPTICAL MOUSE SWITCHES GEN-3

For unrivalled durability and speed



*Image: A hand demonstrating the use of the Razer Cobra Pro mouse, emphasizing the responsiveness of its Gen-3 Optical Mouse Switches.*

## 7. SPECIFICATIONS

Feature	Detail
Brand	Razer
Model Number	RZ01-04660100-R3U1
Connectivity Technology	Bluetooth, Razer HyperSpeed Wireless 2.4GHz, Wired (USB Type C Speedflex Cable)
Movement Detection Technology	Optical (Razer™ Focus Pro 30K Optical Sensor)
Max DPI	30,000 DPI

Customizable Controls	10 Programmable Controls
RGB Lighting	11-Zone Chroma RGB Lighting with Underglow
Mouse Switches	Razer™ Optical Mouse Switches Gen-3
Battery Life (HyperSpeed)	Up to 100 hours
Battery Life (Bluetooth)	Up to 170 hours
Weight	2.72 ounces (approx. 77g)
Dimensions (LxWxH)	4.71 x 2.46 x 0.1 inches
Compatible Operating Systems	Windows, macOS, Linux

## 8. WARRANTY & SUPPORT

The Razer Cobra Pro Wireless Gaming Mouse comes with a 2-year limited warranty. To register your product and access exclusive benefits, visit [razer.com/warranty](https://razer.com/warranty).

For further assistance or technical support, please visit the official Razer support website or contact their customer service.