

[Manuals.plus](#) /

› [ORICO](#) /

› [ORICO CD3510 NAS and Private Cloud User Manual](#)

## ORICO CD3510

# ORICO NAS and Private Cloud User Manual

Model: CD3510

## PRODUCT OVERVIEW

---

The ORICO CD3510 is a network-attached storage (NAS) and private cloud solution designed for 3.5" SATA HDDs. It offers a secure and convenient way to store and access your digital content, including pictures, videos, and documents, from various devices.

Key features include APP connectivity for easy management, a VPN exclusive channel for secure remote access using SDVN encryption, and support for Samba and DLNA protocols for seamless integration into your home network. This device provides a permanent, free private cloud experience, eliminating the need for subscription fees.



Figure 1: ORICO CD3510 NAS and Private Cloud Enclosure with App Interface

This image displays the ORICO CD3510 NAS device, highlighting its magnetic lid design and the intuitive app interface on a smartphone, illustrating how data can be accessed and managed.

## PACKAGE CONTENTS

---

Upon opening the package, ensure all components are present:

- ORICO MetaCube Mini CD3510 Unit
- Network Cable
- USB-A to Type-C Cable
- User Manual (this document)

## SETUP GUIDE

---

Follow these steps to set up your ORICO CD3510 NAS enclosure:

1. **Insert the Hard Drive:** Open the magnetic lid and align a 3.5-inch SATA hard drive with the SATA interface. Gently insert the hard drive into the enclosure. Rotate the direction knob to securely fix the hard disk in place.

# Cloud Storage for Family

Automatic backup of music, document, video and photo



Figure 2: Hard Drive Installation

This image demonstrates the process of inserting a 3.5-inch SATA hard drive into the ORICO CD3510, highlighting the tool-free installation.

2. **Connect Cables:** Plug in the network cable to the LAN port and the power cable to the DC IN port.

Your browser does not support the video tag.

Video 1: ORICO Networkable Hard Drive Setup

This video provides a visual guide to the physical setup of the ORICO CD3510, including hard drive installation and cable connections.

3. **Download Weline APP:** Search for "Weline" in your device's app store (iOS/Android) or visit [weline.io](http://weline.io) to download the official application.
4. **Connect Device via APP:** Open the Weline APP and scan the QR code located on the bottom of the ORICO CD3510 to connect your device. Follow the on-screen prompts to complete the initial setup and grant

necessary permissions, including VPN access for secure remote connections.

5. **Format Hard Disk:** Within the Weline APP, navigate to *Settings > Node Space > Format hard disk*. Follow the instructions to format your hard drive. **Warning:** Formatting will erase all data on the selected drive. Ensure you have backed up any important data before proceeding.

## OPERATING INSTRUCTIONS

### Weline APP Functionality

The Weline APP is the primary interface for managing your ORICO CD3510. It allows you to:

- Store and read pictures, videos, and documents from mobile devices and PCs.
- Access your private cloud remotely via a secure VPN exclusive channel (SDVN encryption).
- Share photos and videos with different devices and users.
- Create public clouds and private spaces, with master account authorization for multiple users.
- Manage files and folders, including uploading, downloading, and organizing content.

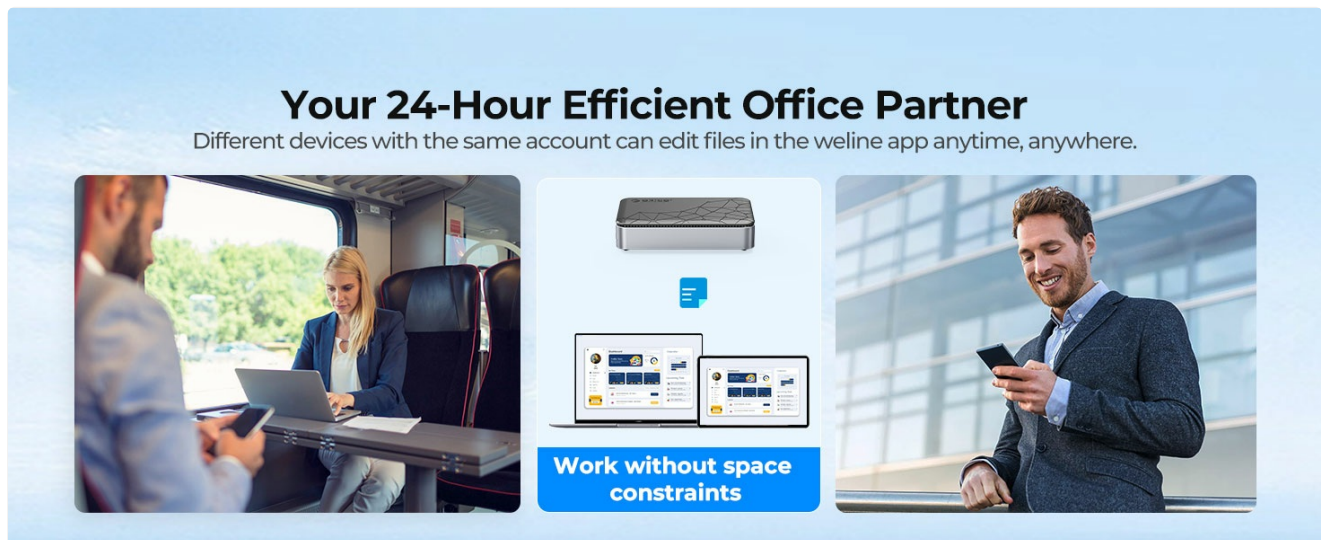


Figure 3: Sharing and Accessing Content

This image illustrates various scenarios for sharing and accessing content, including family photos, baby growth records, and work files, across multiple devices.

### Network Protocols (Samba & DLNA)

The ORICO CD3510 supports Samba and DLNA protocols, allowing for broader network compatibility.

#### Mapping Network Drive for Windows (Samba Function)

To access your NAS as a network drive on Windows:

1. Open the Weline APP on your PC and navigate to the Samba section.
2. Enable the Samba service and set a password if prompted.
3. On your Windows PC, open File Explorer, right-click on "This PC" or "Network" and select "Map network drive...".
4. Enter the network path (e.g., \\192.168.X.X\public) and your credentials.

## Compatible With Multiple File Formats

				
<b>8TB</b>	≈ <b>760000</b> PHOTOS	≈ <b>760000</b> MUSICS	≈ <b>10000</b> HOURS	≈ <b>2280000</b> FILES
<b>20TB</b>	≈ <b>1900000</b> PHOTOS	≈ <b>1900000</b> MUSICS	≈ <b>250000</b> HOURS	≈ <b>5700000</b> FILES
Calculation	10M/Photo	10M/Music	4K UHD	3M/File

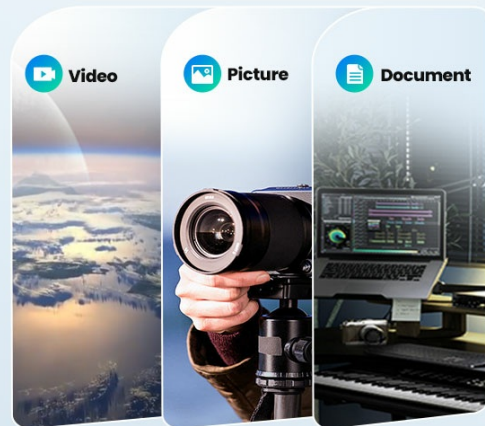


Figure 4: Windows Samba Setup Steps

This image provides a visual walkthrough of configuring and mapping the ORICO CD3510 as a network drive on a Windows operating system using the Samba protocol.

### Mapping Network Drive for macOS (Samba Function)

To access your NAS as a network drive on macOS:

1. From the Finder, select *Go > Connect to Server...*
2. Enter the server address (e.g., `smb://192.168.X.X`) and click "Connect".
3. Select the desired share (e.g., "public" or "home") and enter your credentials if prompted.

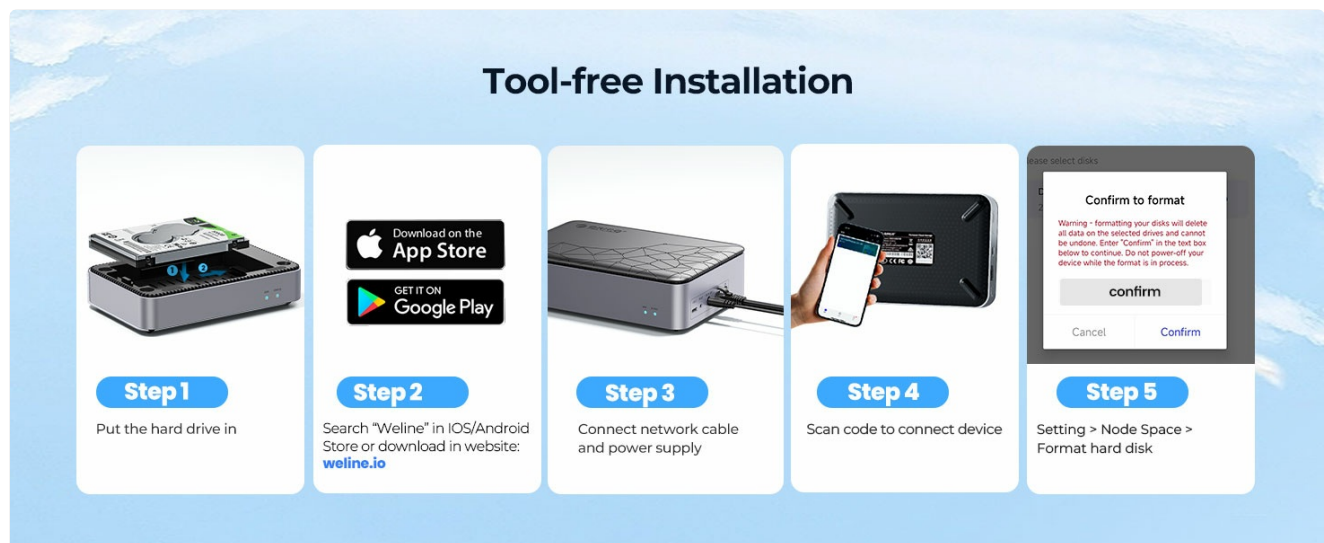


Figure 5: macOS Samba Setup Steps

This image illustrates the steps required to connect and map the ORICO CD3510 as a network drive on a macOS system via the Samba protocol.

## MAINTENANCE

To ensure optimal performance and longevity of your ORICO CD3510:

- Keep the device in a well-ventilated area to prevent overheating.
- Regularly check for firmware updates through the Weline APP to ensure the latest features and security patches.
- Avoid exposing the device to extreme temperatures, humidity, or direct sunlight.

- Clean the exterior with a soft, dry cloth. Do not use liquid cleaners.

## TROUBLESHOOTING

Issue	Possible Cause / Solution
<b>Slow Transmission Speed</b>	Intranet speeds can reach 60-80MB/s, cross-region 4-7MB/s. If speeds are lower, it may be related to your hard disk performance or network environment. Ensure your network connection is stable and your hard drive is healthy. Contact customer service for further assistance.
<b>Device Runs Hot</b>	Ensure adequate ventilation around the device. Avoid placing it in enclosed spaces. If using a mechanical HDD, some heat is normal, but excessive heat may indicate an issue or insufficient cooling for the drive type.
<b>Cannot Connect to Weline APP / Network Access Issues</b>	<ul style="list-style-type: none"> <li>◦ Ensure the device is powered on and connected to your network.</li> <li>◦ Verify your mobile device or PC is connected to the internet.</li> <li>◦ Check if the Weline APP has been granted necessary network and VPN permissions.</li> <li>◦ Some third-party VPN services may conflict with the Weline APP's built-in VPN. Temporarily disable other VPNs if experiencing connection issues.</li> <li>◦ Ensure the hard drive is properly installed and formatted.</li> </ul>
<b>Files Not Appearing / Data Transfer Issues</b>	Confirm the hard drive is correctly formatted and recognized by the device. Check the Weline APP for any error messages during transfer. Ensure sufficient space is available on the hard drive.

## SPECIFICATIONS

Feature	Detail
<b>Model Number</b>	CD3510
<b>Product Dimensions</b>	5.7 x 3.74 x 1.36 inches
<b>Item Weight</b>	1.92 pounds
<b>Compatible Devices</b>	MacOS, Windows, iOS, Android
<b>Material</b>	Metal
<b>Color</b>	Black 3.5"
<b>CPU</b>	Quad Core
<b>Ethernet</b>	Gigabit Ethernet
<b>Interface</b>	USB-C
<b>Intranet Transmission Speed</b>	60-80MB/s (Gigabit Ethernet port rate: MAX 120MB/s, WiFi rate: MAX 60MB/s)

Feature	Detail
Cross-Region Transmission Speed	4-7MB/s

## WARRANTY AND SUPPORT

---

ORICO offers an **18-month warranty** for the MetaCube Mini CD3510. Additionally, lifetime service support is provided to assist with any product-related inquiries or issues.

For technical support or warranty claims, please contact ORICO customer service through their official website or the Weline APP.

You can also refer to the official user guide PDF for more detailed information [User Guide \(PDF\)](#)