

CLABEL CT221B

CLABEL Portable Thermal Label Printer CT221B User Manual

Your guide to efficient and versatile labeling.

1. INTRODUCTION

The CLABEL Portable Thermal Label Printer CT221B is a compact and easy-to-use device designed for various labeling needs, from small businesses to home organization. It utilizes direct thermal printing technology, eliminating the need for ink or toner, and supports a wide range of thermal paper brands. With Bluetooth connectivity for iOS, Android, and PC, it offers flexible printing options.



Figure 1.1: CLABEL Portable Thermal Label Printer CT221B. This image shows the compact black label printer with a roll of labels and several printed labels, highlighting its portability and ease of use.

Key Features:

- **No Label Restrictions:** Compatible with various thermal paper brands, reducing long-term costs.
- **Compact and Portable:** Lightweight (8.4 ounces) and easy to carry for on-the-go labeling.
- **Free, Simple App:** Customize labels with fonts, icons, frames, and templates via the intuitive Clabel app.
- **Sharp, High-Quality Prints:** Direct thermal printing ensures clean, crisp prints without ink.
- **Versatile Applications:** Ideal for barcodes, address labels, product labels, and more.

2. SETUP

2.1 What's in the Box:

Upon unboxing your CLABEL CT221B, ensure all components are present:

- CLABEL Portable Thermal Label Printer CT221B
- 1 Roll of 40x30mm Labels
- USB Charging Cable
- User Manual (this document)

2.2 Loading Labels:

Follow these steps to correctly load the thermal labels into your printer:

1. Squeeze the pressure points on both sides of the printer and pull upwards to open the top cover.
2. Switch the baffle lock to "OPEN".
3. Load the label paper on the left side. Ensure the paper is facing down.
4. Push the baffle to the left to fit the label width.
5. Switch the baffle lock to "CLOSE" to secure the paper.
6. Pull out part of the label paper and close the top cover until it clicks into place.



Figure 2.1: Step-by-step guide on how to load labels into the CLABEL CT221B printer. This image illustrates the process of opening the printer, adjusting the baffle, and inserting the label roll correctly.

2.3 Power On/Off:

To turn on the printer, press and hold the power key for 2 seconds. The blue light will illuminate, indicating the printer is on. To turn off, press and hold the power key again until the light turns off.

2.4 App Download & Connectivity:

The CLABEL CT221B connects via Bluetooth for mobile devices and USB for computers. Download the "Clabel trade" app from your device's app store.



Figure 2.2: Download the "Clabel trade" app from the App Store or Google Play. This image shows the app icon and download options for both iOS and Android platforms.

2.4.1 Mobile Device (Bluetooth):

For detailed instructions on connecting your printer to a mobile device via Bluetooth, refer to the video below:

Your browser does not support the video tag.

Video 2.1: How to connect Bluetooth on phone. This video provides a step-by-step guide on pairing your CLABEL CT221B printer with your smartphone via Bluetooth using the app.

Another helpful video for mobile device connection:

Your browser does not support the video tag.

Video 2.2: How to connect the barcode printer to mobile device. This video demonstrates the process of connecting the CLABEL CT221B to a mobile device, including troubleshooting tips for connection issues.

2.4.2 Computer (USB):

For detailed instructions on installing the printer driver on your computer, refer to the video below:

Your browser does not support the video tag.

Video 2.3: How to install driver on computer. This video guides you through the process of installing the necessary drivers for your CLABEL CT221B printer on a Windows system.

3. OPERATION

3.1 Creating Labels:

3.1.1 Using the Mobile App:

The Clabel app offers a powerful and simplified interface for label creation. You can customize your labels with various elements:

- Text: Add custom text with various fonts and styles.
- Barcodes/QR Codes: Generate and insert barcodes or QR codes.

- Images/Icons: Include images or choose from a library of icons.
- Templates: Utilize pre-designed templates for quick label creation.

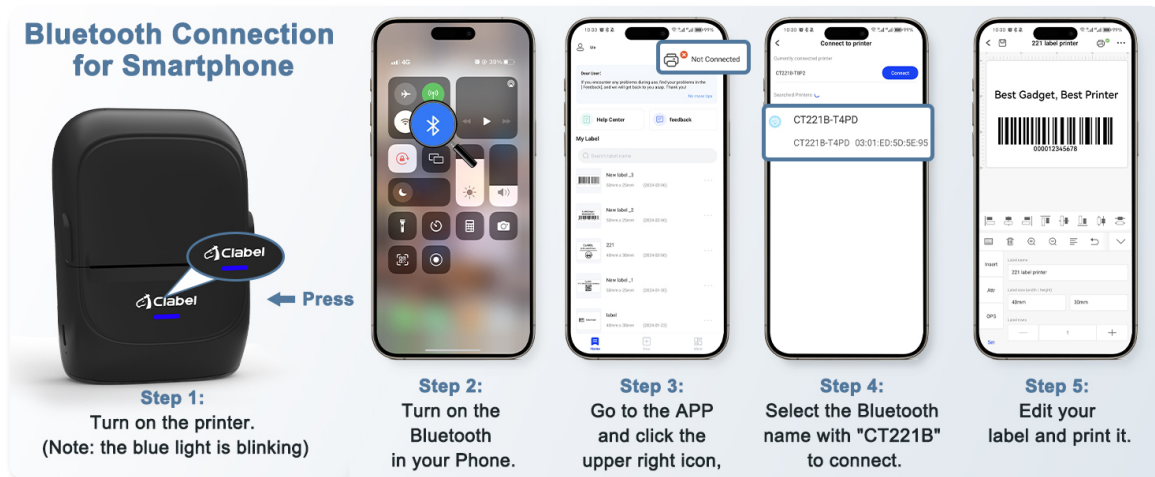


Figure 3.1: The powerful and simplified Clabel app interface. This image displays various screens of the mobile app, showing options for text, barcodes, QR codes, and template selection.

Watch this video for a demonstration of using the app on your phone:

Your browser does not support the video tag.

Video 3.1: How to use our app on phone. This video demonstrates how to create and print labels using the CLABEL app on an Android smartphone, including text and barcode insertion.

3.1.2 Using the Computer Software:

The CLABEL software for computers allows for comprehensive label design and printing. Learn how to use it effectively:

Your browser does not support the video tag.

Video 3.2: How to use our app on computer. This video provides a tutorial on using the CLABEL software on a Windows system to design and print labels, covering various features like text and barcode editing.

3.2 Printing Labels:

Once your label design is complete, you can easily print it from the app or software. The printer supports labels from 0.78" to 2" wide and up to 3.93" long.



Figure 3.2: The CLABEL CT221B supports a wide range of label styles and sizes. This image displays various label dimensions and designs that can be printed, from small price tags to larger address labels.

3.3 Versatile Applications:

The CLABEL CT221B is suitable for a multitude of applications, enhancing organization and efficiency:

- **Small Business:** Create product labels, price tags, and shipping labels.
- **Home Organization:** Label containers, files, and personal items.
- **Crafting:** Design custom labels for handmade goods.
- **Event Management:** Print tickets, name tags, or promotional labels.



Figure 3.3: The CLABEL CT221B is designed for small businesses and supports third-party labels. This image showcases the printer alongside various custom labels for different business needs, such as price tags and product information.



Lightweight and Portable

At only 3 inches thick and weighing just 240g, CLABEL 221B Printer equips a chargeable battery and fits easily into your bag for effortless portability.

4 hrs
Charging

30 rolls
Continuous printing

Figure 3.4: Diverse applications of CLABEL labels, including for jewelry, handmade desserts, florist products, and letters. This image highlights the printer's versatility across various personal and business uses.



Figure 3.5: Practical uses of CLABEL labels for baking, addressing packages, organizing file racks, labeling seasoning jars, and general classification. This image demonstrates how the printer can be used for various organizational tasks.

How to install the labels correctly?

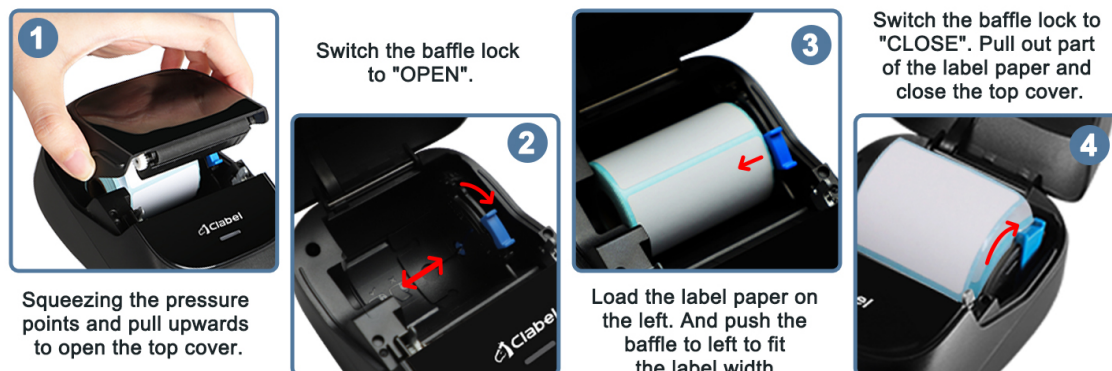


Figure 3.6: More applications of CLABEL labels, including for marmalade jars, supermarket products, aromatherapy bottles, and cable identification. This image showcases the printer's adaptability for different labeling needs.

4. MAINTENANCE

To ensure the longevity and optimal performance of your CLABEL CT221B printer, regular maintenance is recommended:

- **Cleaning:** Use a soft, dry cloth to wipe the exterior of the printer. For the print head, use a cotton swab lightly dampened with isopropyl alcohol. Ensure the printer is off and cooled down before cleaning.
- **Storage:** Store the printer in a cool, dry place away from direct sunlight and extreme temperatures.
- **Label Rolls:** Keep unused label rolls in their original packaging to protect them from dust and moisture.
- **Battery Care:** For prolonged storage, charge the printer periodically (e.g., every 3 months) to maintain battery health.

5. TROUBLESHOOTING

If you encounter issues with your CLABEL CT221B printer, refer to the following common problems and solutions:

5.1 Connectivity Issues:

If your device cannot find or connect to the printer via Bluetooth:

- **Check Power:** Ensure the printer is turned on and the blue indicator light is solid (not black, which means it's off).
- **Bluetooth On:** Verify that Bluetooth is enabled on your mobile device or computer.
- **App Permissions (Android):** For Android devices, ensure location services are enabled for the "Clabel trade" app, as this is often required for Bluetooth scanning.
- **Interference:** Move the printer closer to your device and away from other electronic devices that might cause interference.
- **Re-search:** In the app, try the re-search or refresh option to find available printers.

For visual guidance on troubleshooting connection issues, refer to Video 2.2 in the Setup section.

5.2 Print Quality Issues:

- **Label Orientation:** Ensure the thermal paper is loaded correctly with the printable side facing down.
- **Print Head Cleanliness:** A dirty print head can cause faded or streaky prints. Clean the print head as described in the Maintenance section.
- **Label Quality:** Use high-quality thermal labels for best results.
- **App Settings:** Check print density or darkness settings within the Clabel app or computer software.

5.3 Paper Jam:

- **Open Cover:** Open the top cover and carefully remove any jammed paper.
- **Re-load:** Re-load the label roll, ensuring it is properly aligned and the baffle is secured.

6. SPECIFICATIONS

Detailed technical specifications for the CLABEL Portable Thermal Label Printer CT221B:

Feature	Specification
Brand	CLABEL
Model Series	221B







Feature	Specification
Item Model Number	CT221B
Connectivity Technology	Bluetooth
Printing Technology	Thermal
Printer Output	Monochrome
Maximum Black and White Print Resolution	203 x 203 DPI
Max Printspeed Monochrome	50 ppm
Maximum Media Size	2 x 3.93 inches
Item Weight	8.5 ounces (240 Grams)
Product Dimensions	5.2 x 3.54 x 3.07 inches
Compatible Devices	Smartphones, PC
Control Method	App
Hardware Interface	USB
Wattage	1200 milliamp_hours

7. WARRANTY & SUPPORT

For further assistance, warranty information, or detailed technical support, please refer to the following resources:

- **Installation Manual (PDF):** [Download Here](#)
- **Instructions for Use (IFU) (PDF):** [Download Here](#)
- **Manufacturer:** CLABEL

For any unresolved issues, please contact CLABEL customer support through their official channels.

 <p>1. What is the width of the label paper? And what is the function of the Buffer of the paper bar?</p> <p>2. Why the print quality is not good?</p> <p>Please refer the user manual for more information and details.</p>	<p>CLABEL 220B Portable Label Maker: FAQ and Usage Guide</p> <p>Get answers to common questions about the CLABEL 220B portable label maker, including setup, printing, app connectivity, and troubleshooting. Learn how to load paper, improve print quality, and contact support.</p>
 <p>Get started</p> <p>● Scan the QR code below with a mobile phone to download "Clabel Trade"</p> <p>● Please follow the software instructions below to operate the software.</p> <p>Download and install the "Clabel Trade" app on your mobile phone.</p> <p>Windows</p> <p>Visit website https://clabel.com to download "Clabel Trade" and drivers.</p> <p>Download the driver from the computer and install the software on the computer.</p>	<p>CLABEL Label Maker: Installation Guide for Clabel Trade App and Drivers</p> <p>Comprehensive guide to installing the Clabel Trade app and drivers for iOS, Android, and Windows devices. Learn how to connect your CLABEL label printer for seamless operation.</p>
 <p>User Manual CT221B Label Printer</p> <p>Please read this user manual guide carefully before operating the product.</p>	<p>Clabel CT221B Label Printer User Manual - Setup and Operation Guide</p> <p>Explore the Clabel CT221B Label Printer with this comprehensive user manual. Learn about packing, components, functions, paper loading, mobile/computer printing, and troubleshooting. Available in multiple languages.</p>
 <p>User Manual CT221B Label Printer</p> <p>Please read this user manual guide carefully before operating the product.</p>	<p>Clabel CT221B Label Printer User Manual</p> <p>User manual for the Clabel CT221B Label Printer, covering setup, operation, and troubleshooting in multiple languages.</p>
 <p>Scan the QR code to install the "Clabel Trade" APP.</p>	<p>Clabel Trade Label Printer Setup and Usage Guide</p> <p>A comprehensive guide to setting up and using the Clabel Trade label printer, including paper loading, app connection, printing, and customer support information.</p>
 <p>User Manual CT220B Label Printer</p> <p>Please read this user manual guide carefully before operating the product.</p>	<p>Clabel CT220B Label Printer User Manual</p> <p>User manual for the Clabel CT220B Label Printer. This guide provides detailed instructions on setup, operation via mobile and computer, troubleshooting common issues, and technical specifications.</p>

