

## Kircuit AC/DC Adapter for RCA Ri500 Series

# Kircuit AC/DC Adapter Instruction Manual

For RCA Ri500, Ri500-A, Ri500A Portable AM/FM Dock/Radio iPod iPhone Stereo Music Speaker Sound Systems

## 1. PRODUCT OVERVIEW

This Kircuit AC/DC adapter is designed to provide power to compatible RCA Ri500, Ri500-A, and Ri500A portable AM/FM dock/radio iPod iPhone stereo music speaker sound systems. It serves as a replacement or spare power supply unit.

### Key Features:

- **Input Voltage:** Supports a wide range of AC input from 100V to 240V, suitable for international use.
- **Safety Protections:** Incorporates built-in dynamic IC, charger IC, and power fuse for rapid charging and protection against overcharge, short circuits, excess voltage, overcurrent, and over-temperature.
- **Durable Design:** Constructed with high-quality materials for enhanced durability and resistance to wear and tear.

## 2. SETUP INSTRUCTIONS

Follow these steps to properly set up your Kircuit AC/DC adapter:

1. **Verify Compatibility:** Before connecting, ensure that the output specifications of this adapter (voltage and current) match the power requirements of your RCA Ri500 series device. Refer to your device's original power adapter or user manual for exact specifications.
2. **Connect to Device:** Insert the DC output plug of the Kircuit adapter firmly into the power input port of your RCA Ri500 series device.
3. **Connect to Power Outlet:** Plug the AC input prongs of the adapter into a standard wall power outlet (100-240V AC).
4. **Power On:** Once connected, your device should receive power. Turn on your RCA device as per its own operating instructions.



*Image: The Kircuit AC/DC adapter connected to a power strip, ready to power a device.*

### 3. OPERATING INSTRUCTIONS

The Kircuit AC/DC adapter operates automatically once connected to a power source and a compatible device. It provides a stable power supply for your RCA Ri500 series portable audio system.

- Ensure all connections are secure before operating your device.
- The adapter is designed for continuous use within its specified input range.
- If your device has a battery, the adapter will charge the battery while simultaneously powering the device, provided the device supports this functionality.

### 4. MAINTENANCE

Proper maintenance ensures the longevity and safe operation of your adapter:

- **Cleaning:** Disconnect the adapter from the power outlet and your device before cleaning. Use a soft, dry cloth to wipe the exterior. Do not use liquid cleaners or solvents.
- **Storage:** When not in use, store the adapter in a cool, dry place away from direct sunlight and extreme

temperatures. Avoid tightly coiling the cable to prevent damage.

- **Cable Care:** Regularly inspect the power cord for any signs of damage, such as fraying, cuts, or kinks. Do not use the adapter if the cord is damaged.



*Image: The Kircuit AC/DC adapter showing its approximately 6.5 ft (2 meter) cord length.*

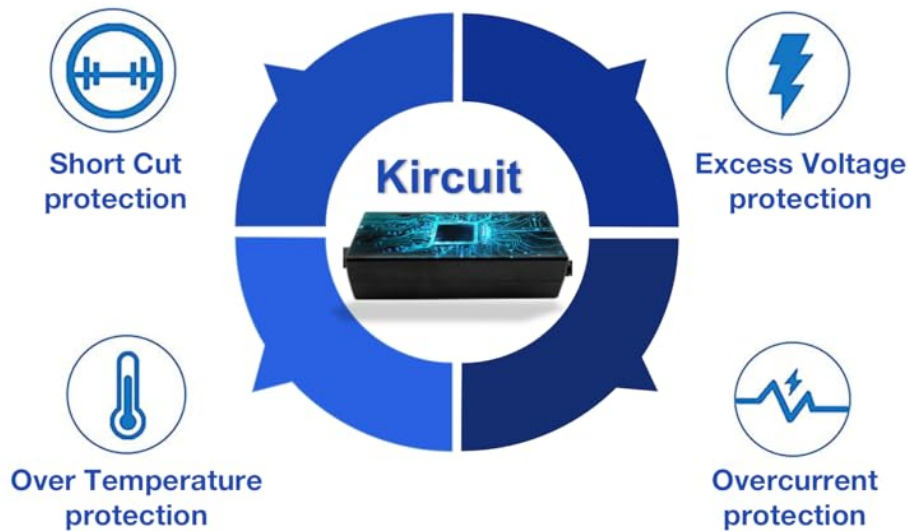
## 5. SAFETY INFORMATION

Adhere to the following safety guidelines to prevent injury or damage:

- **Indoor Use Only:** This adapter is intended for indoor use in dry locations. Do not expose it to water, rain, or excessive humidity.
- **Proper Ventilation:** Ensure the adapter has adequate ventilation. Do not cover it or operate it in an enclosed space where heat cannot dissipate.
- **Avoid Overloading:** Do not connect the adapter to devices that exceed its specified output capabilities.
- **Handle with Care:** Do not drop, disassemble, or attempt to repair the adapter. Refer servicing to qualified personnel.
- **Children and Pets:** Keep the adapter and its cord out of reach of children and pets.

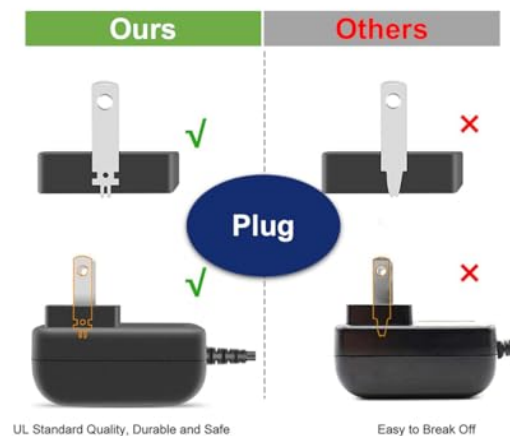
- **Unplug When Not in Use:** Disconnect the adapter from the power outlet when not in use for extended periods or during electrical storms.

## Built Safety Protections



*Image: Overview of the adapter's built-in safety protections, including short circuit, excess voltage, overcurrent, and over-temperature protection.*

- The plugs on the power cable also well-made and designed to provide a secure and stable connection.
- The plugs can handle high electrical loads without overheating or causing a fire hazard.



*Image: Details on the durable design of the power cable, highlighting high-quality materials and insulation.*

## Why choose Kircuit ?



**Kircuit adapters have a wide range of product offerings that are compatible with various device types, power requirements, and connector standards. Kircuit adapters have a strong quality control process in place to ensure our products meet the highest standards of safety and performance.**

*Image: Illustration comparing the secure and stable connection provided by the adapter's plugs against less reliable designs.*

## 6. TROUBLESHOOTING

If you encounter issues with your Kircuit AC/DC adapter, refer to the table below:

Problem	Possible Cause	Solution
Device not powering on.	<ol style="list-style-type: none"><li>1. Adapter not properly plugged into outlet.</li><li>2. Adapter not properly connected to device.</li><li>3. Power outlet is not active.</li><li>4. Device power requirements do not match adapter output.</li></ol>	<ol style="list-style-type: none"><li>1. Ensure adapter is fully inserted into the wall outlet.</li><li>2. Verify the DC plug is securely connected to your device.</li><li>3. Test the outlet with another appliance.</li><li>4. Confirm adapter output specifications match your device's input requirements.</li></ol>
Adapter feels warm during use.	Normal operation. Insufficient ventilation.	A slight warmth is normal. Ensure the adapter is not covered and has adequate airflow. If it becomes excessively hot, disconnect immediately.
Device powers on but does not charge.	Device or adapter issue. Device battery fault.	Verify if your device supports charging via this adapter. Consult your device's manual. If the issue persists, the device's battery may be faulty.

## 7. SPECIFICATIONS

<b>Input Voltage</b>	100-240V AC, 50/60Hz, 0.3A
----------------------	----------------------------

<b>Output Specifications</b>	Specific voltage and current are not provided in this manual. Please verify compatibility with your device's original power requirements (e.g., 5V, 2A) before use.
<b>Cord Length</b>	Approximately 6.5 feet (2 meters)
<b>Manufacturer</b>	Shenzhen Waweis Technology Co., Ltd
<b>ASIN</b>	B0C4T95WC6
<b>Date First Available</b>	May 10, 2023

## 8. WARRANTY AND SUPPORT

This Kircuit AC/DC adapter typically comes with a standard return policy. For specific warranty details, please refer to the purchase documentation or contact the seller directly. A 30-day return/replacement policy is generally offered for this product.

For technical support or inquiries, please contact the retailer or manufacturer through the contact information provided at the point of purchase.