

AEGIS PSZ-30

AEGIS Smart Biometric Safe Box - User Manual

Model: PSZ-30

Brand: AEGIS

INTRODUCTION

This user manual provides comprehensive instructions for the setup, operation, and maintenance of your AEGIS Smart Biometric Safe Box. Please read this manual thoroughly before using the safe to ensure proper function and security.



Figure 1: AEGIS Smart Biometric Safe Box

SAFETY INFORMATION

- **Do not store emergency keys inside the safe.** Keep them in a secure, accessible location outside the safe.
- Ensure the safe is placed on a stable, level surface or securely mounted to prevent tipping.
- Keep the safe away from excessive moisture or direct sunlight.
- Do not attempt to force the safe open if it is locked. Refer to troubleshooting.
- Keep children and unauthorized individuals away from the safe.

PACKAGE CONTENTS

Upon opening the package, verify that all components are present:

- AEGIS Smart Biometric Safe Box
- Emergency Keys (2)
- Mounting Bolts (4)
- User Manual (this document)
- Removable Shelf (1)

SETUP

1. Battery Installation

The safe requires 4 x 1.5V AA Alkaline batteries (not included) for operation of the electronic keypad and fingerprint scanner.

1. Locate the battery compartment, typically on the inside of the safe door.
2. Insert 4 AA batteries, ensuring correct polarity (+/-).
3. Close the battery compartment cover securely.

2. Mounting the Safe

The safe can be securely mounted to a wall or floor using the provided mounting bolts. This enhances security and prevents unauthorized removal.

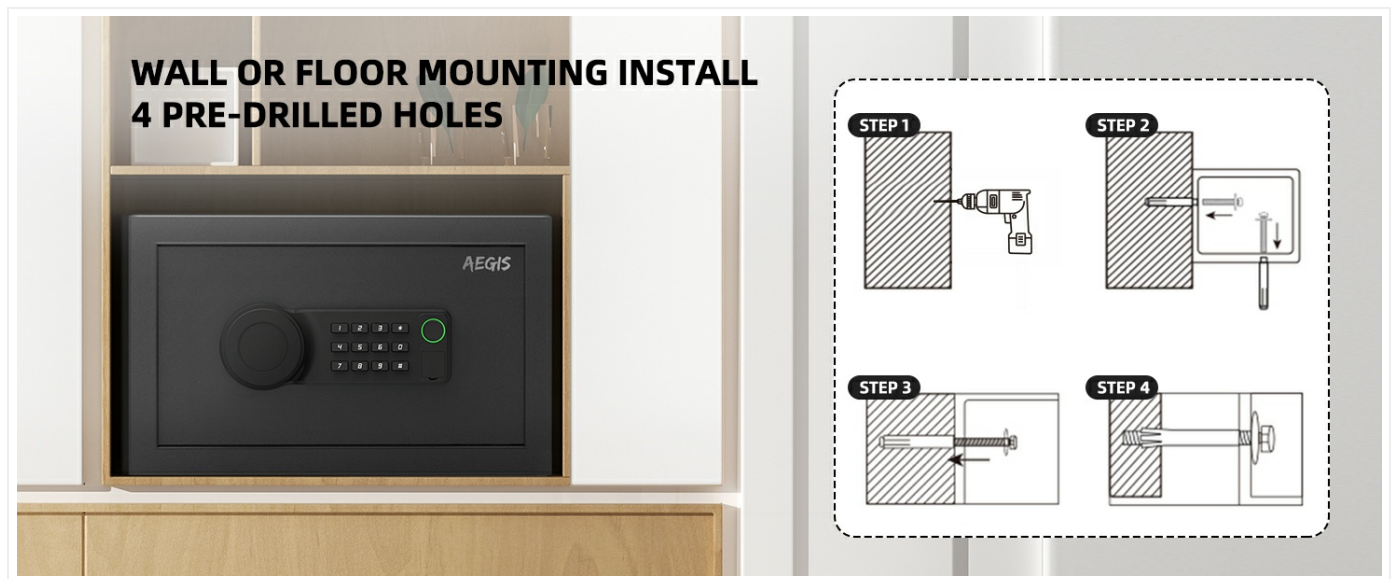


Figure 2: Wall or Floor Mounting Installation Steps

1. Choose a suitable location for mounting (e.g., inside a wardrobe, bedside, or closet).
2. Mark the drilling points through the pre-drilled holes on the back or bottom of the safe.
3. Drill pilot holes at the marked locations.
4. Align the safe with the drilled holes and secure it using the provided mounting bolts.

OPERATING INSTRUCTIONS

1. Initial Opening

For the first time opening, use the emergency key:

1. Locate the key cover on the keypad panel.
2. Remove the key cover.
3. Insert the emergency key and turn it counter-clockwise.
4. While holding the key turned, rotate the knob clockwise to open the safe door.

2. Unlocking Methods

The AEGIS Smart Biometric Safe Box offers four quick access methods:

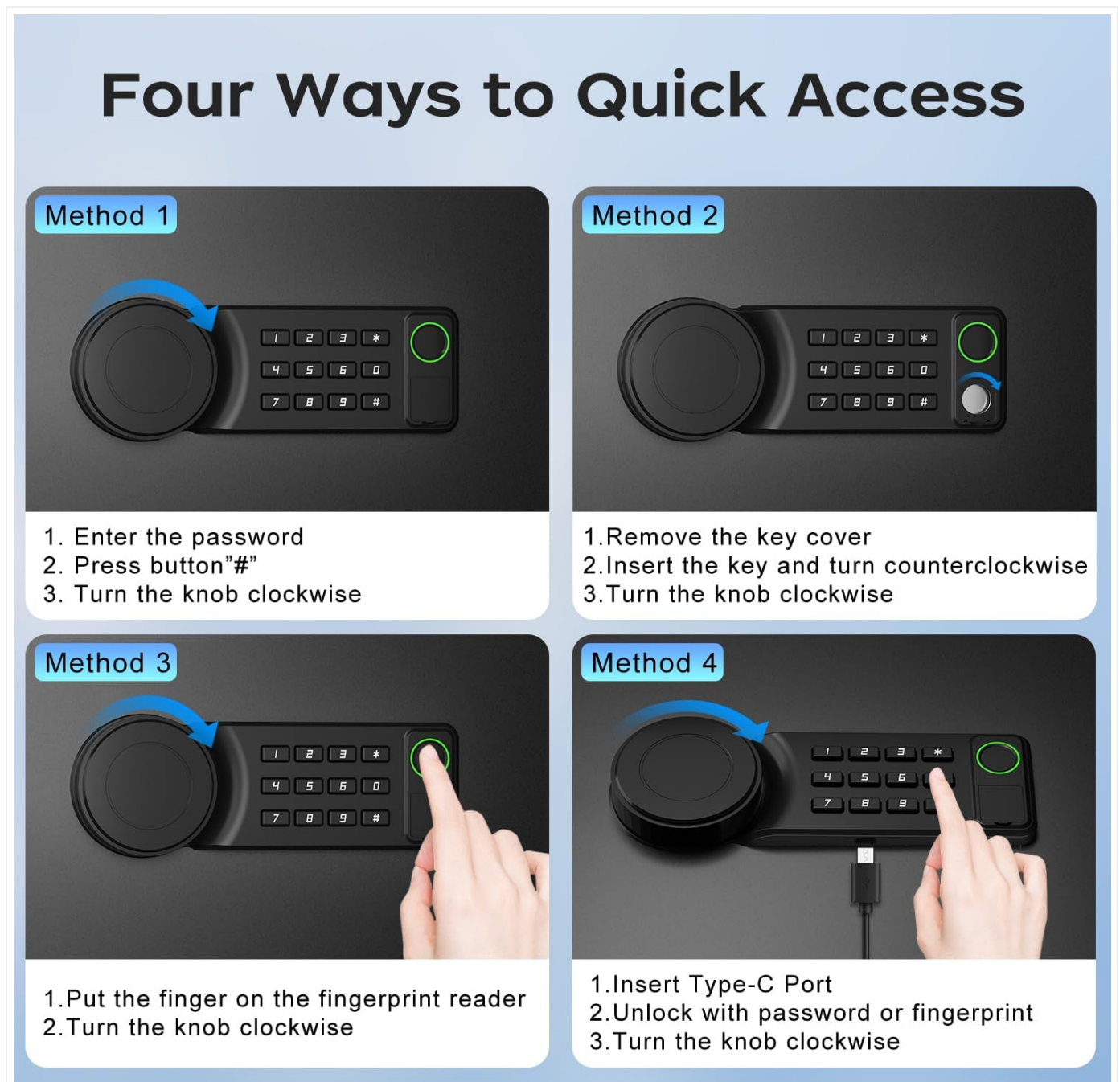


Figure 3: Four Ways to Quick Access

Method 1: Keypad (Password)

1. Enter your 3 to 8 digit password.
2. Press the "#" button.
3. Turn the knob clockwise to open.

Method 2: Emergency Key

1. Remove the key cover.
2. Insert the key and turn it counter-clockwise.
3. Turn the knob clockwise to open.

Method 3: Biometric Fingerprint

1. Place your registered finger on the fingerprint reader.
2. Once recognized (green light), turn the knob clockwise to open.

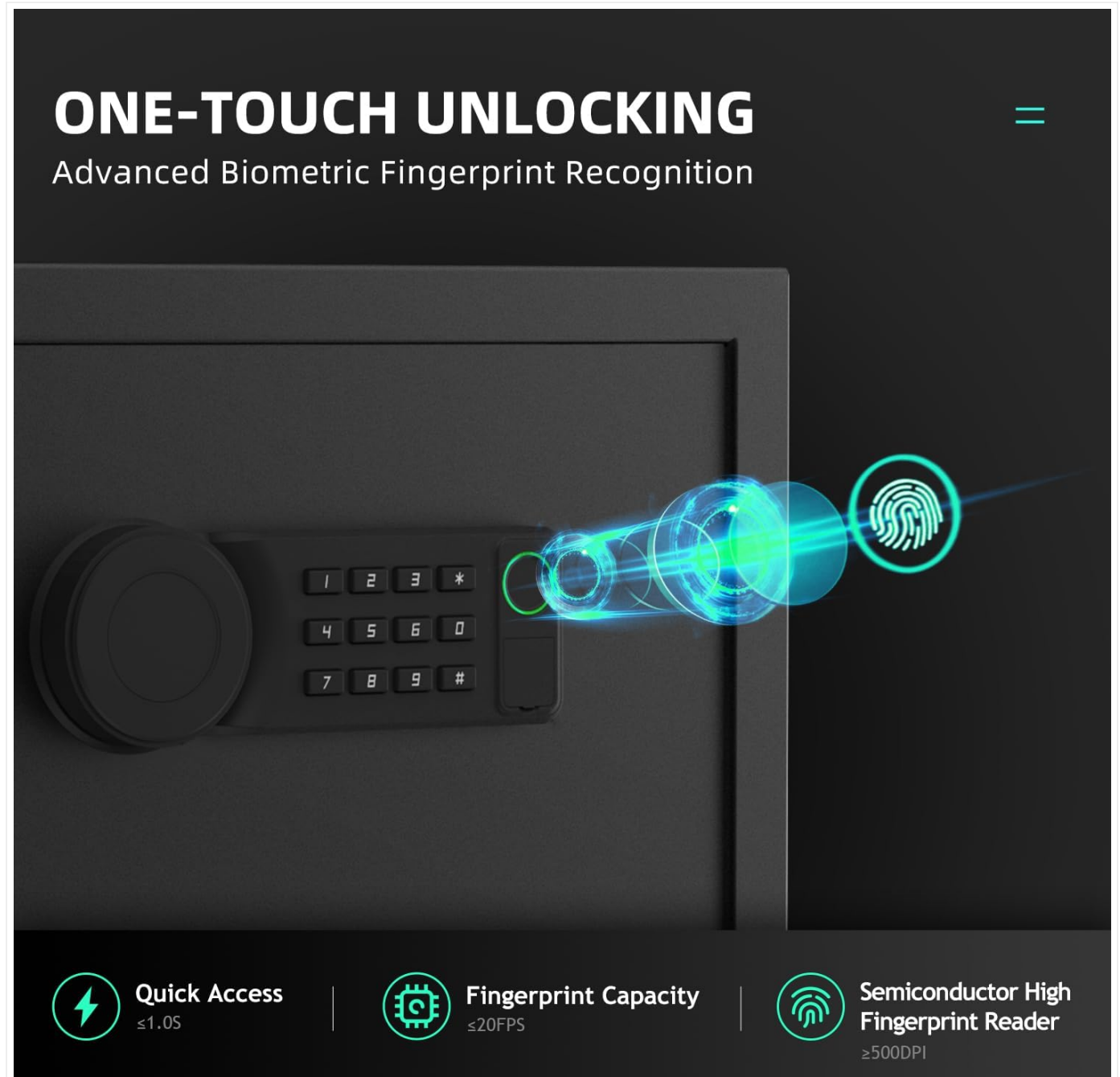


Figure 4: One-Touch Biometric Unlocking

Method 4: USB Port (Emergency Power)

In case of battery depletion, connect a Type-C power source to the USB port.

1. Insert a Type-C cable into the port.
2. Unlock using either your password or registered fingerprint.
3. Turn the knob clockwise to open.

3. Setting/Changing Passwords and Fingerprints

Refer to the detailed instructions provided within the safe's internal compartment or the quick start guide for programming new passwords and registering up to 20 unique fingerprints.

4. Silent Mode

To enable or disable silent mode (mutes keypad beeps and alarm sounds):

- To turn on silent mode: Press the "*" button.
- To turn off silent mode: Press the "*" button again.



Figure 5: Silent Mode Icon

5. Alarm Function

The safe is equipped with an alarm system for enhanced security.

- If 3 incorrect password attempts or fingerprint scans occur, the alarm will activate.
- The alarm will sound for 30 seconds.
- To stop the alarm, enter the correct password or use a registered fingerprint.



Figure 6: Alarm Function Icon

MAINTENANCE

- Regularly check battery levels and replace them when low to avoid being locked out.
- Clean the exterior of the safe with a soft, damp cloth. Avoid abrasive cleaners.
- Ensure the fingerprint sensor is clean and free of debris for optimal performance.
- Periodically check mounting bolts for tightness.

TROUBLESHOOTING

Problem	Possible Cause	Solution
Safe does not open with fingerprint.	Finger not properly placed; unregistered fingerprint; dirty sensor.	Ensure finger covers the entire sensor; register your fingerprint; clean the sensor. Try multiple angles.
Keypad does not respond.	Dead batteries; incorrect password.	Replace batteries; use emergency key or USB power; re-enter correct password.

Problem	Possible Cause	Solution
Alarm sounds frequently.	Multiple incorrect entry attempts.	Ensure correct password/fingerprint is used. Avoid repeated incorrect entries.
Door is stuck or difficult to open.	Obstruction; misalignment.	Check for any items blocking the door. Ensure the safe is on a level surface. If issues persist, contact customer support.

SPECIFICATIONS

Feature	Detail
Brand	AEGIS
Model Number	PSZ-30
Capacity	1.7 Cubic Feet
Exterior Dimensions (D x W x H)	13.78"D x 12.99"W x 16.5"H
Interior Dimensions (H x W x D)	16.3"H x 13.6"W x 10.7"D
Lock Type	Biometric, Digital Keypad, Key
Material	Alloy Steel
Color	Black
Fingerprint Capacity	Up to 20 unique fingerprints
Password Length	3-8 digits
Power Source	4 x 1.5V AA Alkaline batteries (not included)
Emergency Power	Type-C USB Port
Mounting Type	Freestanding, Tabletop, Wall/Floor Mountable
Included Components	Mounting Bolts

Product Information

High Capacity



INSIDE SIZE:H16.3"X W13.6"X D10.7"



Pistol



Watch



Medicine



Jewelry



File

Figure 7: Product Dimensions and Capacity

REMOVABLE SHELF

The shelf could be removed according to your need

WITH SHELF



WITHOUT REMOVABLE SHELF



Figure 8: Removable Shelf for Flexible Storage

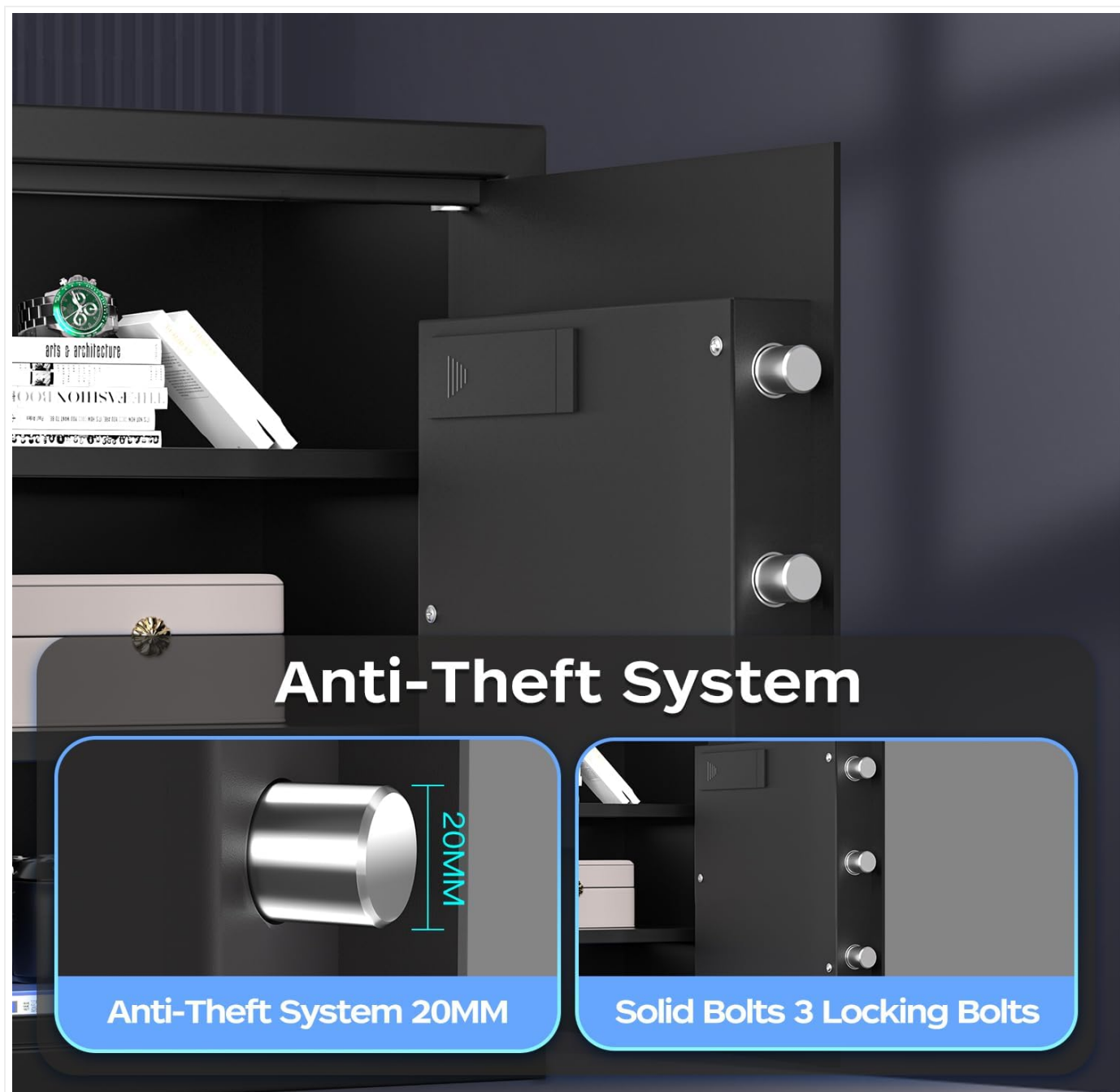


Figure 9: Anti-Theft System Details

WARRANTY AND SUPPORT

For warranty information or technical support, please refer to the contact details provided on the product packaging or visit the official AEGIS website. Keep your purchase receipt as proof of purchase for warranty claims.

AEGIS is committed to providing reliable products and customer satisfaction. If you encounter any issues not covered in this manual, please do not hesitate to reach out to our support team.