

HYPERLITE HPHBBZ02-2

HYPERLITE UFO LED High Bay Light 200W Instruction Manual

MODEL: HPHBBZ02-2

1. Introduction

Thank you for choosing the HYPERLITE UFO LED High Bay Light. This manual provides essential information for the safe and efficient installation, operation, and maintenance of your new lighting fixture. This 200W LED high bay light is designed to emit 26000 lumens of 5000K daylight-friendly light, suitable for indoor lighting at heights of 16-20 feet. Please read these instructions thoroughly before installation and retain them for future reference.

2. What's in the Box

Your HYPERLITE UFO LED High Bay Light package includes the following components:

- 2 x 200W 5000K LED High Bay Lights
- 2 x 6ft Power Cords with 120V Plug
- 2 x Ring Hooks
- 1 x Instruction Manual

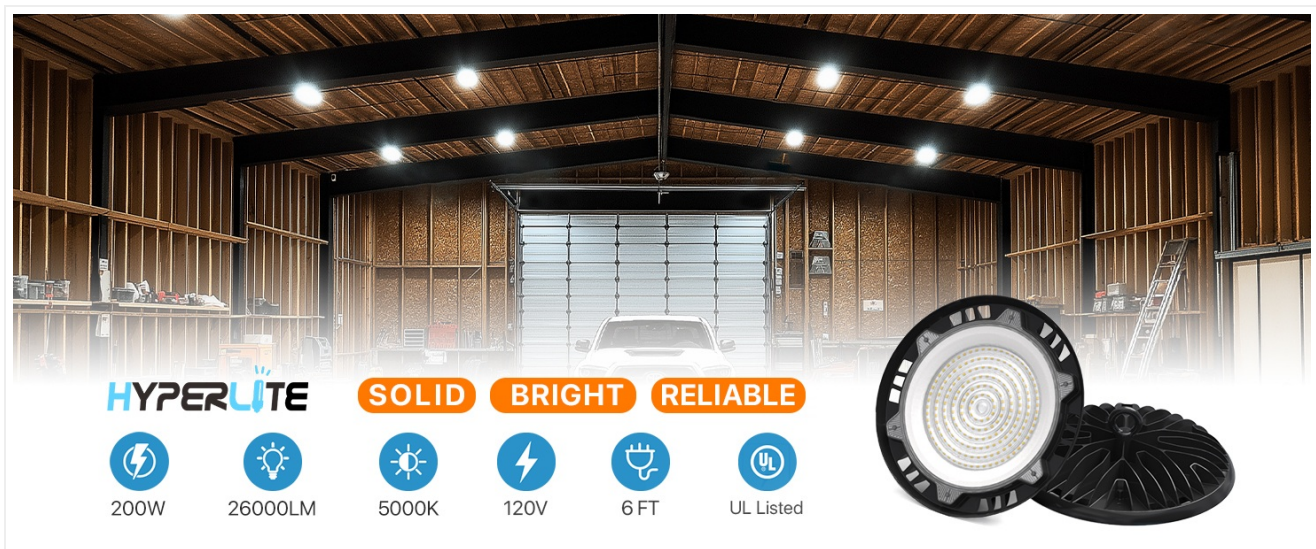


Image: Components included in the HYPERLITE UFO LED High Bay Light package.

3. Specifications

Brand	HYPERLITE
Model Name	HPHBBZ02-2
Wattage	200 watts
Brightness	26000 Lumens
Color Temperature	5000 Kelvin (Daylight)
Illumination Angle	120°
Voltage	120 Volts
Material	Aluminum
Product Dimensions	11.9"L x 11.9"W x 2.2"H
Item Weight	8.18 pounds
Water Resistance Level	IP65 (Waterproof)
Installation Type	Hook Mount
Power Source	AC (Plug-In)
Lifespan	Up to 30,000 hours

4. Safety Information

Please observe the following safety precautions to prevent injury or damage:

- Always disconnect power before installing, cleaning, or servicing the fixture.
- Ensure the installation surface can support the weight of the fixture.
- Do not look directly into the LED light source when it is illuminated.

- This fixture is designed for 120V AC power. Do not connect to other voltage sources.
- Keep flammable materials away from the fixture during operation.
- If the external flexible cable or cord of this luminaire is damaged, it shall be exclusively replaced by the manufacturer or his service agent or a similar qualified person in order to avoid a hazard.

5. Installation

The HYPERLITE UFO LED High Bay Light features a simple hook mount and plug-in design for quick installation. No electrician is typically required for standard installations.

1. **Prepare the Mounting Location:** Identify a suitable overhead structure (e.g., beam, truss) that can safely support the weight of the light fixture. Ensure it is within reach of a standard 120V power outlet.
2. **Attach the Ring Hook:** Securely screw the provided ring hook into the top of the light fixture.
3. **Hang the Fixture:** Hang the light fixture from the chosen overhead structure using the ring hook. For added safety, utilize the included safety cable by attaching one end to the fixture and the other to a secure point on the mounting structure.
4. **Connect to Power:** Plug the 6ft power cord into a standard 120V outlet.



Image: Visual guide for the easy installation process.

Video: Official HYPERLITE video demonstrating the simple installation and stable lighting of the high bay light.

6. Operating Instructions

Once installed and connected to a power source, the HYPERLITE UFO LED High Bay Light operates by simply turning on the power switch of the connected outlet. There are no complex controls or settings required for basic operation.

- **To Turn On:** Activate the power switch connected to the light fixture's outlet.
- **To Turn Off:** Deactivate the power switch connected to the light fixture's outlet.

INSTALLATION COULDN'T BE EASIER

No electricians, No tools,
just plug in and light up.

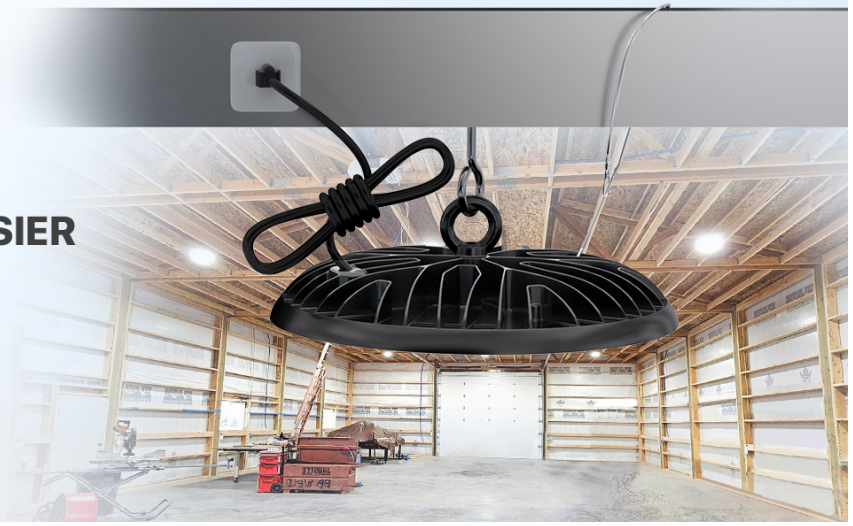


Image: The high bay light providing bright illumination in a large indoor area.

7. Maintenance

The HYPERLITE UFO LED High Bay Light is designed for high durability and minimal maintenance. Its high-temperature resistant die-cast aluminum housing and IP65 waterproof rating ensure long-lasting performance.

- **Cleaning:** Periodically wipe the exterior of the fixture with a soft, damp cloth to remove dust and debris. Ensure the power is disconnected before cleaning. Do not use harsh chemicals or abrasive cleaners.
- **Inspection:** Regularly inspect the power cord and mounting hardware for any signs of wear or damage. If any damage is found, discontinue use and contact customer support.

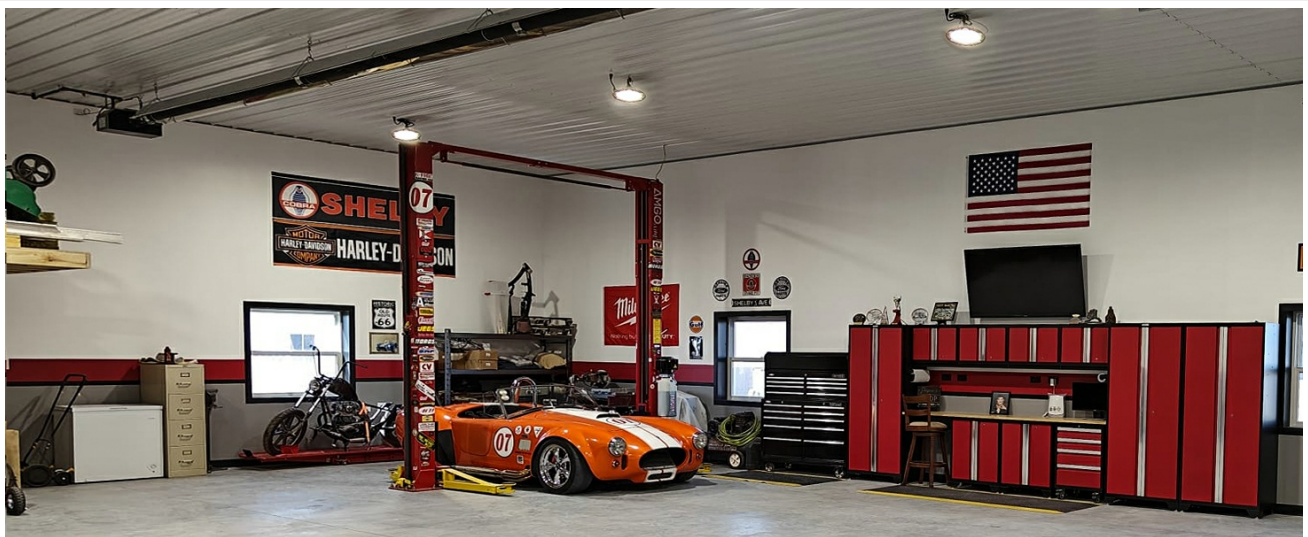


Image: Advanced heat dissipation features for extended product life.



Image: The IP65 waterproof rating ensures protection against dust and water.

8. Troubleshooting

If you encounter issues with your HYPERLITE UFO LED High Bay Light, refer to the following common troubleshooting steps:

Problem	Possible Cause	Solution
Light does not turn on	No power to the outlet; loose connection; faulty fixture.	Check the power outlet and circuit breaker. Ensure the power cord is securely plugged in. If issues persist, contact customer support.
Light is dim or flickers	Unstable power supply; fixture malfunction.	Ensure the power supply is stable. If flickering continues, contact customer support.
Fixture is overheating	Poor ventilation; environmental factors.	Ensure adequate airflow around the fixture. If overheating persists, discontinue use and contact customer support.

9. Warranty and Support

HYPERLITE offers its customers a 3-year limited warranty on this product. If any defects occur within 1 year of purchase, HYPERLITE will deliver a new UFO LED high bay light to you. For warranty claims, technical assistance, or general inquiries, please contact HYPERLITE customer support.


You can visit the official HYPERLITE store for more information and support:[HYPERLITE Store](#)

10. Application Examples

The HYPERLITE UFO LED High Bay Light is suitable for a variety of indoor applications requiring bright, efficient lighting, such as workshops, warehouses, gyms, barns, and factories.



DURABLE LIGHT ALWAYS RIGHT



Durable Quality with
Solid Aluminum



Waterproof
Capability



Excellent Cooling
System

Application in a Barn



Electrophoresis?!

What's this?

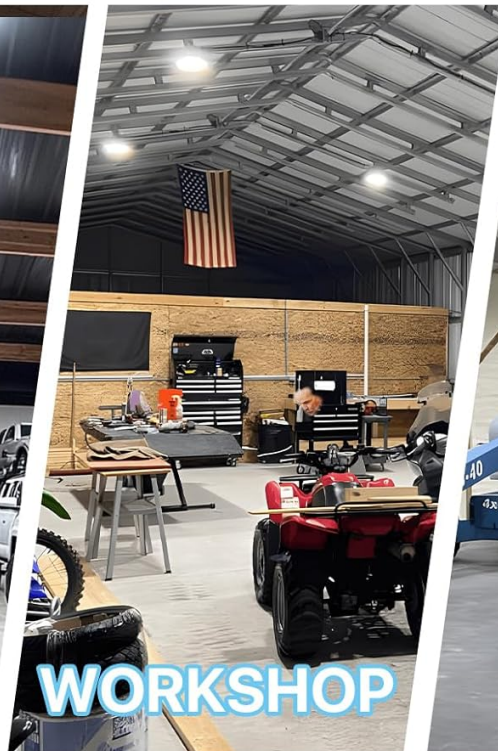
Next-level gloss!

✓ **Uniform** ✓ **Durable**

✓ **Corrosion-resistant**



Application in a Garage



Application in a Workshop

Video: HYPERLITE LED high bay light showcasing its use in various commercial and industrial settings.