

## Manuals+

[Q & A](#) | [Deep Search](#) | [Upload](#)

manuals.plus /

› [AMROOLOO](#) /

› [AMROOLOO G12 GPS Head-Up Display User Manual](#)

## AMROOLOO G12

# AMROOLOO G12 GPS Head-Up Display User Manual

## 1. INTRODUCTION

This document provides instructions for the AMROOLOO G12 GPS Head-Up Display. This intuitive car head-up display shows your vehicle's data and driving information on the screen, updated in real-time with accurate data. It can be installed anywhere for easy viewing, enhancing safety by reducing the need to look down at your dashboard. The AMROOLOO G12 GPS Head-Up Display supports your journey by providing essential driving information directly in your line of sight.

## 2. PRODUCT OVERVIEW

### 2.1 Key Features

- **Real-time Data Display:** Shows speed, driving distance, direction, and number of satellites.
- **Safety Reminders:** Includes speed alerts and fatigue driving reminders.
- **Universal Compatibility:** GPS system ensures compatibility with all vehicle types.
- **Automatic Brightness Adjustment:** Photosensitive aperture adjusts screen brightness for clear visibility day and night.
- **Customizable Display:** Adjust the screen to show one or multiple functions.
- **Memory Function:** Records satellite position for quick data display after parking for up to two hours.

### 2.2 Package Contents

- AMROOLOO G12 Head-Up Display Device
- USB Cable
- Double-sided Adhesive Tape
- Suction Cup Mount
- Instruction Manual

# PRODUCT ACCESSORIES



Image: The AMROOLOO G12 GPS Head-Up Display shown with its included accessories: USB cable, double-sided adhesive, suction cup mount, and user manual.

## 3. SETUP

### 3.1 Installation

- 1. Choose Placement:** Select a location on your dashboard where the display is easily visible without obstructing your view of the road.
- 2. Secure the Device:** Use either the provided suction cup mount for adjustable placement or the double-sided adhesive tape for a more permanent fixture. Ensure the surface is clean and dry before applying adhesive.
- 3. Connect Power:** Connect the device to your car's USB port using the supplied USB cable.

## EXCLUSIVE GPS SERIES SPEEDOMETER

Exclusive color, faster search for stars, recording your satellite position within two hours, and immediately displaying your driving data after parking for two hours and using it again.



Image: The AMROOLOO G12 GPS Head-Up Display positioned on a car dashboard, displaying speed and other driving data.

### 3.2 Initial Power-On and Satellite Acquisition

1. Once connected, the device will power on and begin searching for satellite signals.
2. The satellite icon on the display will flash during the search.
3. When the satellite icon stops flashing, the device has acquired a signal and will start displaying data.
4. If satellite acquisition is slow, move your vehicle to an open area for better signal reception.



Image: An illustration depicting satellites in orbit around Earth, symbolizing the GPS system used by the device for data acquisition.

## 4. OPERATING INSTRUCTIONS

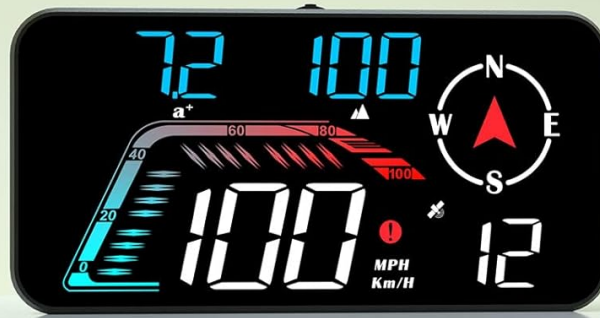
### 4.1 Display Functions

The AMROOLOO G12 can display various driving data. Use the toggle button on the top of the device to cycle through display modes and configure settings.

- **Speed:** Current driving speed (KM/H or MPH).
- **Driving Distance:** Distance traveled during the current trip.
- **Direction:** Compass display indicating driving direction.
- **Number of Satellites:** Indicates the strength and number of connected GPS satellites.
- **Time:** Current time.
- **Altitude:** Current altitude.
- **Acceleration Time:** Time taken to accelerate over a certain distance.
- **Travel Time:** Duration of the current trip.

# PRODUCT FUNCTIONS

The product searches for satellite signals to display driving data. You can switch the function of the screen according to your preferences, and you can also switch the screen display.



Speed



Mileage



Time



Altitude



Direction of travel



Acceleration time



Travel time



Unit switching

Image: The AMROOLOO G12 display illustrating its various functions, including speed, mileage, time, altitude, direction of travel, acceleration time, travel time, and unit switching.

## 4.2 Safety Reminders

The device includes features to enhance driving safety:

- **Speed Alert:** Configurable alerts for exceeding set speed limits.
- **Fatigue Driving Reminder:** Prompts the driver to take a break after extended driving periods.

# PROMPT FUNCTIONS

The product has the function of reminding you through settings. When you drive for too long or exceed the speed limit, the product will remind you.



One section overspeed



Three sections overspeed



Two sections overspeed



Fatigue driving

Image: The AMROOLOO G12 display indicating prompt functions such as one, two, or three sections overspeed warnings, and a fatigue driving reminder.

## 4.3 Automatic Brightness

The integrated photosensitive aperture automatically adjusts the display brightness according to ambient light conditions, ensuring optimal visibility during both day and night driving.

## Real Photos



Daytime



Night

Image: Real photos of the AMROOLOO G12 display showing its clear visibility during daytime and nighttime driving due to automatic brightness adjustment.

## 5. MAINTENANCE

- **Cleaning:** Use a soft, dry cloth to clean the display screen and device body. Avoid abrasive cleaners or solvents.
- **Storage:** When not in use for extended periods, store the device in a cool, dry place away from direct sunlight.
- **Cable Care:** Ensure the USB cable is not bent sharply or pinched, which could damage the internal wires.

## 6. TROUBLESHOOTING

Problem	Possible Cause	Solution
Device does not power on.	No power supply or faulty USB cable.	Check USB connection. Ensure the car's USB port is active. Try a different USB cable or power source.
Slow satellite signal acquisition.	Obstructed view of the sky (e.g., in a garage, underpass).	Move the vehicle to an open area with a clear view of the sky. Wait a few minutes for the device to connect to satellites.
Inaccurate speed reading.	Weak GPS signal or initial calibration.	Ensure a strong GPS signal (satellite icon is solid). Drive for a short period to allow the device to calibrate. Refer to the manual for speed calibration settings if available.
Display is too dim or too bright.	Automatic brightness sensor issue or manual override.	Ensure the photosensitive aperture is not obstructed. If manual brightness adjustment is available, check settings using the toggle button.

## 7. SPECIFICATIONS

- **Model:** G12
- **Brand:** AMROOLOO
- **Dimensions (L x W x H):** 9.7 x 3.19 x 5.5 cm (3.82 x 1.26 x 2.17 inches)
- **Weight:** 87 Grams (0.19 lbs)
- **Material:** Plastic
- **Power Source:** USB (No internal battery required)
- **Special Features:** Car speedometer, GPS system, speed alert, fatigue driving reminder, automatic brightness.
- **Compatibility:** Universal (GPS-based, suitable for all vehicles).
- **ASIN:** B0C4LSNWWL
- **UPC:** 723497757003

# PRODUCT DETAILS

Photosensitive aperture

Toggle key



USB jack Suction cup holder hole

Image: A detailed view of the AMROOLOO G12 GPS Head-Up Display, highlighting its toggle key, photosensitive aperture, USB jack, and suction cup holder hole.

## 8. CUSTOMER SUPPORT

For any questions, concerns, or if you are not satisfied with your product, please contact AMROOLOO customer service. We are committed to resolving any issues you may encounter.

Thank you for choosing AMROOLOO products.