

COUGAR CGR-5AD1B-RGB



COUGAR Duoface Pro RGB Mid Tower Case Instruction Manual

Model: CGR-5AD1B-RGB | Brand: COUGAR

1. INTRODUCTION

The COUGAR Duoface Pro RGB is a versatile mid-tower gaming case designed for enthusiasts seeking both aesthetic appeal and superior airflow. It features two distinct front panels—one tempered glass for showcasing RGB lighting and one mesh for optimized air intake—allowing users to customize their build's appearance and thermal performance. This manual provides essential information for setting up, operating, and maintaining your Duoface Pro RGB case.



Figure 1: COUGAR Duoface Pro RGB with Tempered Glass Panel

2. KEY FEATURES

- **Dual Front Panels:** Easily switch between a tempered glass panel for aesthetics and a mesh panel for enhanced airflow.
- **Optimized Airflow:** Supports up to nine fans and a 360mm water cooling radiator for excellent thermal performance.
- **Pre-installed ARGB Fans:** Equipped with four 120mm ARGB fans (three front, one rear) and a highlighted logo for stunning lighting effects.
- **Integrated RGB Controller:** Built-in LED controller compatible with 5V ARGB connections on motherboards for system-wide lighting synchronization.
- **Spacious Interior:** 240mm wide-body design accommodates E-ATX motherboards, graphics cards up to 390mm, and multiple storage drives.
- **Tool-less Assembly:** Features like removable top panel, detachable front bracket, and quick-slide dust filter simplify installation and maintenance.



No Style Without Substance

The innovative quick slide dust filter of the Duoface Pro RGB is both highly functional and aesthetically pleasing, with stylish edges that visually sets it apart. Additionally, you can easily slide off the dust filter without removing the front panel, making maintenance a breeze. Why choose between functionality or style when you can have both?

Figure 2: Dual Front Panel Design

3. SETUP

3.1 Unboxing and Initial Inspection

Carefully remove the case from its packaging. Inspect for any signs of damage during transit. The case comes with the tempered glass panel pre-installed, and the mesh panel is included in a separate box.



Figure 3: COUGAR Duoface Pro RGB with Mesh Panel

3.2 Panel Removal and Installation

1. **Side Panel:** To access the interior, unscrew the thumb screw at the rear top corner of the tempered glass side panel. Gently pull the panel away from the chassis.
2. **Top Panel:** Remove the two screws securing the top panel. Use the integrated handle to pop the panel off the magnets and lift it away.
3. **Front Panel:** The front panel can be easily removed by pulling on the fake airflow holes on the side. To install, align the panel with the chassis and push firmly until it clicks into place.



Figure 4: Removable Top Panel and Dust Filter

3.3 Component Installation

- **Motherboard:** The case supports Mini-ITX, Micro-ATX, ATX, and E-ATX motherboards. Install standoffs as needed and secure your motherboard. For E-ATX, the cable management bar on the right side of the motherboard tray may need to be removed.
- **CPU Cooler:** The case supports CPU air coolers up to 190mm in height.
- **Graphics Card:** Graphics cards up to 390mm in length are supported. The case also features triple vertical slots for vertical GPU mounting (requires a separate PCIe riser cable).
- **Storage Drives:** Two 2.5" SSD brackets are located behind the motherboard tray. A drive cage in front of the PSU shroud accommodates two 3.5" HDDs. This cage can be removed for increased PSU space.
- **Power Supply:** Install your ATX power supply in the dedicated compartment at the bottom rear of the case.



Figure 5: Spacious Interior for Component Installation

3.4 Cable Management

The Duoface Pro RGB offers ample space (2.3-2.4mm) behind the motherboard tray for cable routing. Utilize the pre-installed Velcro straps and cable guiding rails to keep cables tidy and improve airflow. The cable management bar also doubles as a GPU holder.



Figure 6: Cable Management Bar

4. OPERATING

4.1 Front I/O Ports

The front I/O panel provides convenient access to various ports and controls:

- 1 x USB 3.2 Gen 2 Type-C
- 2 x USB 3.0 Type-A
- 1 x 4-Pole Headset Audio Jack
- 1 x RGB Button (for controlling pre-installed ARGB fans)
- Power Button



Figure 7: Front I/O Ports

4.2 RGB Lighting Control

The pre-installed ARGB fans can be controlled via the dedicated RGB button on the front I/O panel. For advanced synchronization with your motherboard's lighting ecosystem, connect the built-in LED controller to a compatible 5V ARGB header on your motherboard.



Figure 8: ARGB Fan Illumination

5. MAINTENANCE

5.1 Dust Filter Cleaning

The Duoface Pro RGB features innovative quick-slide dust filters for easy maintenance. The bottom dust filter can be easily slid out from the front without removing the front panel. Regularly clean all dust filters (front, top, and bottom) to ensure optimal airflow and prevent dust buildup inside the case.

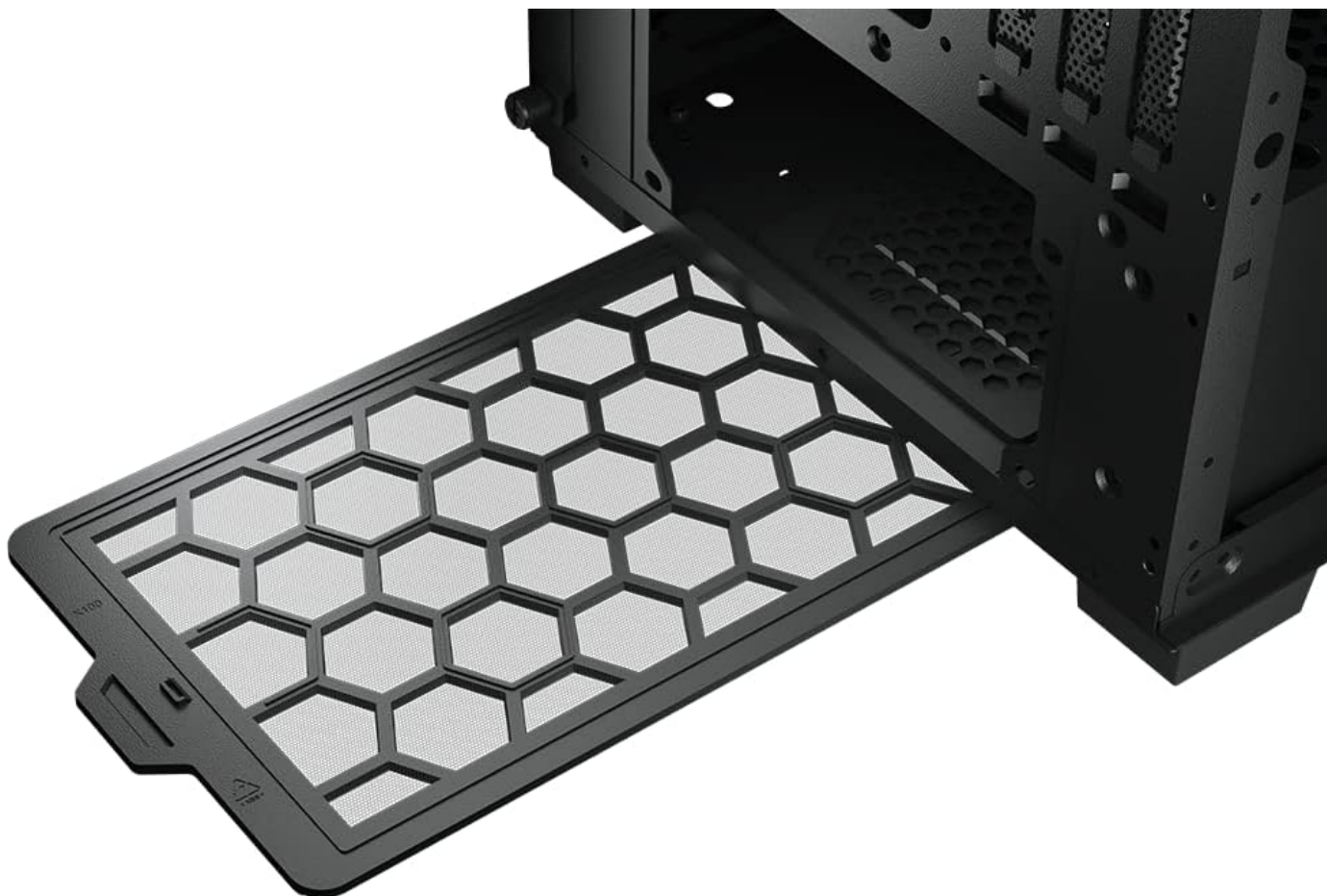


Figure 9: Removable Bottom Dust Filter

5.2 General Cleaning

Use a soft, dry cloth to wipe down the exterior surfaces of the case. For the tempered glass panel, a glass cleaner can be used. Avoid abrasive cleaners or solvents that may damage the finish.

6. TROUBLESHOOTING

- **Fans Not Spinning/RGB Not Lighting Up:** Check all fan and RGB connections to the motherboard or the included RGB controller. Ensure the power supply is providing adequate power.
- **Poor Airflow/High Temperatures:** Verify that all fans are spinning correctly and are oriented for proper airflow (intake/exhaust). Clean all dust filters. Ensure no cables are obstructing airflow. Consider switching to the mesh front panel for improved thermal performance.
- **Panel Difficult to Remove/Install:** Ensure all screws are fully loosened or removed. For snap-on panels, apply firm, even pressure. Refer to Section 3.2 for detailed instructions.
- **Loose Components:** Double-check all screws and mounting points for components like the motherboard, graphics card, and storage drives.

7. SPECIFICATIONS

Feature	Specification
Model Name	Duoface Pro RGB

Item Model Number	CGR-5AD1B-RGB
Case Type	Mid Tower
Dimensions (LxWxH)	18.31 x 9.45 x 19.53 inches (465 x 240 x 496 mm)
Weight	22 pounds (10 kg)
Motherboard Compatibility	Extended ATX, ATX, Micro ATX, Mini ITX
Max. GPU Length	390mm
Max. CPU Cooler Height	190mm
Pre-installed Fans	4 x 120mm ARGB (3 Front, 1 Rear)
Radiator Support	Front: 360mm / 280mm; Top: 360mm / 280mm; Rear: 120mm / 140mm
Drive Bays	2 x 3.5" HDD, 2 x 2.5" SSD
I/O Ports	1 x USB 3.2 Gen 2 Type-C, 2 x USB 3.0, 1 x 4-Pole Headset Audio Jack, 1 x RGB Button
Material	Steel, Tempered Glass

8. WARRANTY AND SUPPORT

COUGAR products come with a limited warranty. Please refer to the warranty card included in your product packaging or visit the official COUGAR website for detailed warranty terms and conditions. For technical support, troubleshooting assistance, or spare parts, please contact COUGAR customer service through their official support channels.

