

UGREEN 25221

UGREEN 3M Cat 8 Ethernet Cable Instruction Manual

Model: 25221

1. PRODUCT OVERVIEW

The UGREEN 3M Cat 8 Ethernet Cable is designed to provide a stable and high-speed network connection for various devices. This cable supports advanced data transfer rates and bandwidth, making it suitable for demanding applications such as online gaming, 4K/8K video streaming, and large file transfers.

Key Features:

- **High-Speed Performance:** Supports data transfer speeds up to 40 Gigabits per second (Gbps) and a bandwidth of up to 2000 MHz.
- **Flat and Flexible Design:** The unique flat and slim design allows for easy routing and installation under carpets, along walls, or through narrow spaces without affecting aesthetics.
- **Double Shielded:** Constructed with 30AWG pure copper foil shielded twisted pairs (F/FTP) and an aluminum foil shield, providing superior protection against interference and crosstalk for a more stable and faster network.
- **Durable Connectors:** Features reinforced gold-plated RJ45 connectors that are corrosion-resistant and designed for over 1000 plug-and-unplug cycles, ensuring a long lifespan and reliable connection.
- **Universal Compatibility:** Compatible with all devices equipped with an RJ45 port, including PCs, laptops, game consoles (Xbox, PS5, PS4, PS3, Nintendo Switch), routers, modems, smart TVs, network printers, and more.

Much Faster than Cat7/6/5 Network

أسرع بكثير من شبكة Cat7/6/5



Cat 8	40Gbps/2000MHZ
Cat 7	10Gbps/600MHZ
Cat 6	1000Mbps/250MHZ

Image 1: UGREEN Cat 8 Ethernet Cable with its RJ45 connectors, highlighting its robust design.

2. SETUP INSTRUCTIONS

Setting up your UGREEN Cat 8 Ethernet Cable is a straightforward plug-and-play process. No additional drivers or software are required.

Steps:

- 1. Identify Ports:** Locate the RJ45 Ethernet ports on your network device (e.g., router, modem, switch) and the device you wish to connect (e.g., PC, game console, smart TV).
- 2. Connect Cable:** Insert one end of the UGREEN Cat 8 Ethernet Cable into the RJ45 port of your network device. Ensure it clicks securely into place.
- 3. Connect to Device:** Insert the other end of the Ethernet cable into the RJ45 port of your target device. Again, ensure a secure click.
- 4. Verify Connection:** Most devices will automatically detect the network connection. Check for network activity indicators on your devices (e.g., blinking lights on the Ethernet port) to confirm a successful connection.

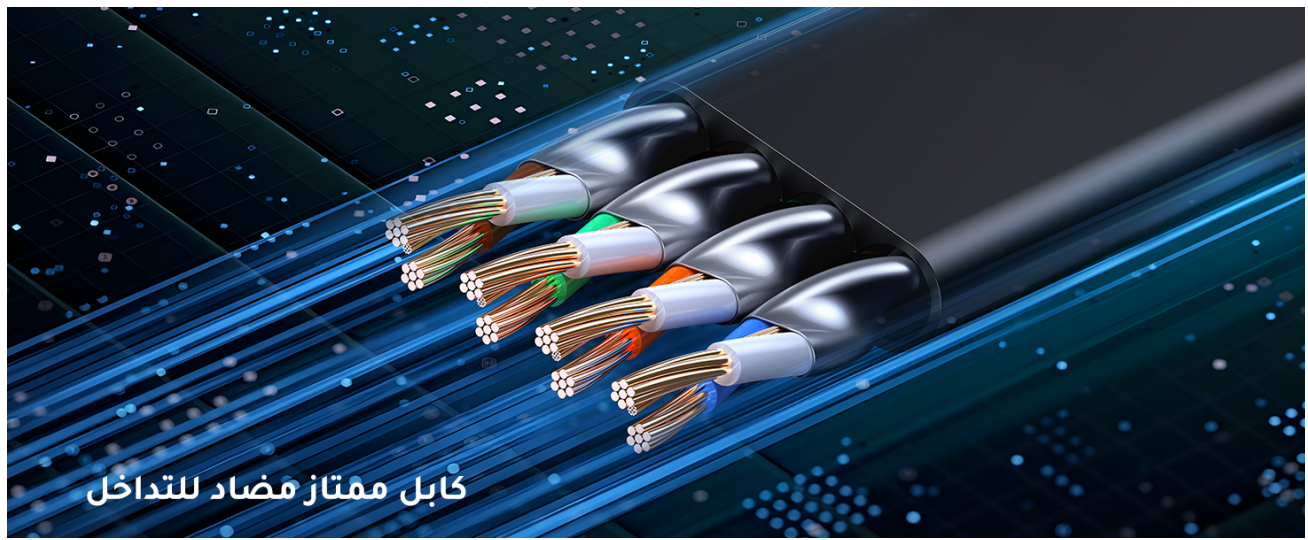


Image 2: Demonstrates connecting the Ethernet cable to a laptop for a stable connection.

Cable Routing Tips:

- Due to its flat design, the cable can be easily routed under doors, along baseboards, or beneath carpets for a neat and organized setup.
- Avoid sharp bends or kinks in the cable, as this can damage the internal wires and affect performance.



Image 3: Illustrates the flat design of the UGREEN Ethernet cable, making it easy to route along walls or under objects.

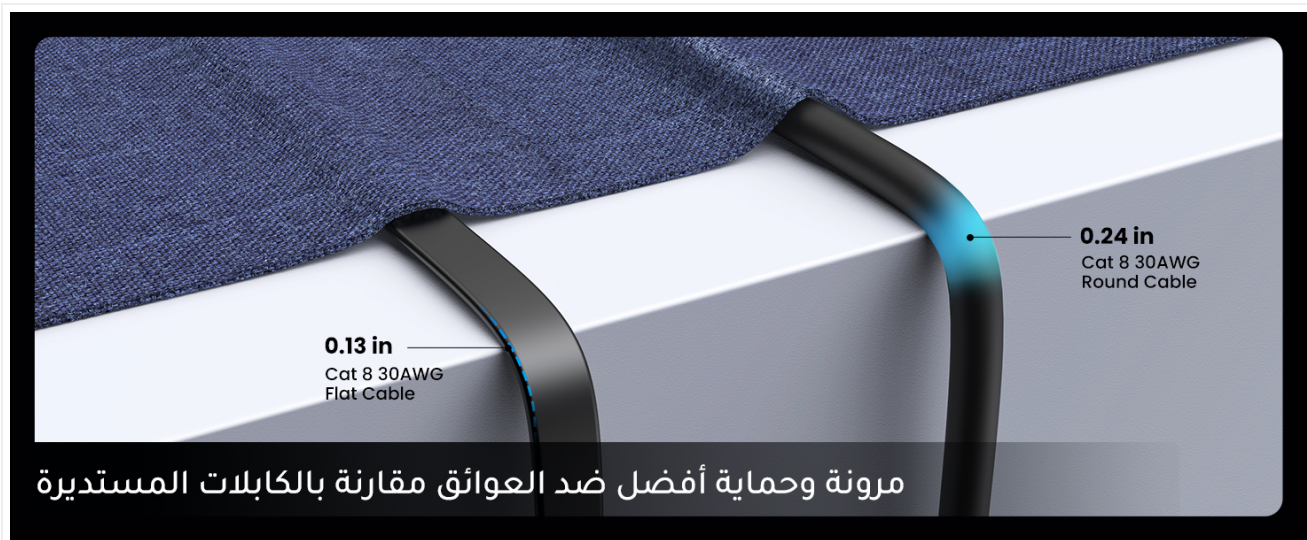


Image 4: Shows the cable discreetly placed under a carpet and around a door corner, demonstrating its flexibility and hidden wiring capability.

3. OPERATING INSTRUCTIONS

Once connected, the UGREEN Cat 8 Ethernet Cable operates automatically to provide a high-speed network connection. There are no specific operational steps required from the user beyond ensuring a proper physical connection.

Optimal Usage:

- For best performance, ensure that both your network device (router/modem) and your connected device support Cat 8 or higher Ethernet standards. The cable is backward compatible with Cat 7, Cat 6, Cat 5e, and Cat 5 standards.
- Utilize the cable for applications requiring maximum bandwidth and minimal latency, such as competitive online gaming, streaming high-resolution media, or transferring large data files.



Image 5: A visual representation of the UGREEN Ethernet cable connecting various devices like routers, laptops, PCs, TVs, servers, and data centers.

4. MAINTENANCE

Proper care and maintenance will extend the lifespan of your UGREEN Cat 8 Ethernet Cable and ensure consistent performance.

Guidelines:

- **Avoid Physical Stress:** Do not bend the cable sharply, twist it excessively, or place heavy objects on it. This can damage the internal conductors and shielding.
- **Protect Connectors:** When not in use, consider using the included dust caps (if applicable) to protect the RJ45 connectors from dust and debris.
- **Storage:** Store the cable in a cool, dry place away from direct sunlight and extreme temperatures. When coiling, do so loosely to prevent kinks.
- **Cleaning:** If the connectors or cable jacket become dirty, gently wipe them with a soft, dry, lint-free cloth. Do not use harsh chemicals or abrasive cleaners.



Image 6: Illustrates the tensile and wear-resistant properties of the UGREEN Ethernet cable, highlighting its durability compared to standard cables.

5. TROUBLESHOOTING

If you encounter issues with your UGREEN Cat 8 Ethernet Cable, refer to the following troubleshooting steps:

Common Issues and Solutions:

- **No Network Connection:**
 - Ensure both ends of the Ethernet cable are securely plugged into their respective ports.
 - Check if the network device (router/modem) is powered on and functioning correctly.
 - Try connecting a different, known-working Ethernet cable to rule out a cable fault.
 - Restart your network devices (router, modem) and the connected device.
- **Slow Network Speed:**
 - Verify that your internet service provider (ISP) is delivering the expected speed.
 - Ensure your router/modem and connected device support the high speeds offered by Cat 8. If they support lower categories, the speed will be limited by the slowest component.
 - Check for other devices on your network consuming significant bandwidth.
 - Inspect the cable for any visible damage, sharp bends, or kinks.
 - The double shielding of the Cat 8 cable minimizes interference, but ensure it's not routed too closely to strong electromagnetic sources.
- **Intermittent Connection:**
 - Ensure all connections are firm and not loose.
 - Test with another Ethernet cable to determine if the issue is with the cable or other network components.
 - Check for updated network drivers on your computer or device.

6. SPECIFICATIONS

Manufacturer	UGREEN Group Limited
Model Number	25221
Cable Type	Ethernet, Category 8
Connector Type	RJ45 (Male-to-Male)
Data Transfer Speed	Up to 40 Gbps
Bandwidth	Up to 2000 MHz
Shielding	F/FTP (Foil shielded twisted pair), Double Shielded
Conductor	30AWG Pure Copper
Connector Material	Gold-plated

Special Feature	Flat Design, Double Shielded
Cable Length	3 Meters
Compatible Devices	PC, Laptop, iMac Pro, PS5, PS4, PS3, Nintendo Switch, Ethernet Switch, Hub, Router, Modem, Monitor, Projector, WiFi Extender, Smart TV, Xbox, Video Game Consoles, Patch Panel, Network Printers, Media Players, VoIP Phones, Blu-ray Player, Server

7. WARRANTY AND SUPPORT

For warranty information, technical support, or any inquiries regarding your UGREEN Cat 8 Ethernet Cable, please refer to the official UGREEN website or contact UGREEN customer service directly. Keep your purchase receipt for warranty claims.

8. PRODUCT VIDEOS

Video 1: An overview of the UGREEN Cat 8 Ethernet Cable, showcasing its features like gold-plated contacts, braided cable, multiple shields, and flexible design. It demonstrates connection to a PC and high-speed gaming performance.

Video 2: This video highlights the flat design and flexible bending capabilities of the UGREEN Cat 8 Ethernet Cable, showing how it can be discreetly installed in a home environment, such as under a rug or along a wall. It also features the gold-plated connectors and demonstrates high-speed gaming without lag.

Video 3: This video focuses on the fast transmission capabilities of the UGREEN Flat Gigabit Ethernet Cable, emphasizing its pure copper gold-plated contacts and shield twisted pairs for high anti-interference. It shows the cable's flat design for hidden wiring and a high-speed gaming experience.