

Elvie B0C4FT6Q1F

Elvie Double Wearable Breast Pump with App Instruction Manual

Model: B0C4FT6Q1F

1. PRODUCT OVERVIEW

The Elvie Double Wearable Breast Pump is designed for discreet, hands-free milk expression. This system allows users to pump milk in various environments, offering portability and quiet operation. It integrates with a mobile application for enhanced control and monitoring.

Key Features:

- **Wearable Design:** Smallest and lightest for discreet, in-bra use.
- **Quiet Operation:** Utilizes Piezo pumps for minimal sound during use.
- **App Control:** Monitor milk volume, track pumping history, and adjust settings via a smartphone application.
- **Automated Functionality:** Infrared sensors detect milk volume and automatically switch between stimulation and expression modes.
- **Hands-Free:** Allows for mobility during pumping sessions.



Image 1.1: The Elvie Double Wearable Breast Pump system, including two pump units, bottles, breast shields, and charging cables.

2. What's in the Box

The Elvie Double Wearable Breast Pump package includes the following components:

- 2 Pump Hubs
- 2 Bottles (5oz/150ml, BPA free)
- 2 Lids
- 2 Breast Shields (24mm)
- 2 Spouts
- 2 Valves
- 2 Seals
- 2 USB Charging Cables
- 4 Bra Adjusters
- Additional Breast Shields (one set each of 21mm and 28mm)

What's in the box

Parts for a pumping session



2 Hubs



2 Bottles
2 Lids



2 Breast Shields (24 mm)



2 Spouts
2 Valves



2 Seals

Also included



2 Bottles
2 Lids



4 Breast Shields
(21 and 28 mm)



2 Valves



2 Spouts



2 Seals



2 Charging
Cables



4 Bra
Adjusters

Image 2.1: All components of the Elvie Double Wearable Breast Pump laid out, illustrating the contents of the package.

3. SAFETY INFORMATION

As with any baby product, keep the pump and accessories out of reach of children to avoid potential choking hazards or injury.

Statements regarding dietary supplements have not been evaluated by the FDA and are not intended to diagnose, treat, cure, or prevent any disease or health condition.

4. SETUP AND ASSEMBLY

4.1 Component Identification



Image 4.1: Labeled diagram of the Elvie Pump, showing the hub, bottle, breast shield, button, and charging port.

4.2 Assembly Steps

1. Wash your hands thoroughly with soap and water before handling the pump or any breast milk.
2. Assemble the pump according to the manufacturer's instructions. Ensure all parts (breast shield, spout, valve, seal, bottle) are properly fitted and secure.
3. Position the breast shield over each nipple, ensuring it fits snugly but not too tightly around the areolas.

4.3 Breast Shield Sizing

Selecting the correct breast shield size is crucial for comfort and efficient milk expression. Measure the width of the base of your nipple with a ruler to determine the appropriate size. Elvie Pump includes 21mm, 24mm, and 28mm breast shields.



Image 4.2: Guide on how to measure your nipple base for selecting the correct breast shield size.

Breast Shield Sizing Guide

Nipple Size (mm)	Recommended Elvie Pump Breast Shield Size
11 mm - 17 mm	21 mm/24 mm Breast Shields (Nipple Cushion may be needed)
13 mm - 19 mm	21 mm/24 mm Breast Shields (Nipple Cushion may be needed)
20 mm - 22 mm	24 mm/28 mm Breast Shields
23 mm - 26 mm	24 mm/28 mm Breast Shields

Note: Nipple Cushions are sold separately.

5. OPERATING INSTRUCTIONS

5.1 Pumping Process

1. Turn on the pump and adjust the suction and speed settings to your comfort level. It is recommended to start with a lower suction and gradually increase as comfortable.
2. As the pump creates a vacuum, it will stimulate milk release. Milk should flow through the breast pump into the attached bottle.
3. Once you have achieved 2 or 3 let-downs, you may switch to the other breast and repeat the process, or continue pumping both simultaneously if using two pumps.
4. Pump for approximately 30 minutes from both breasts combined, or as advised by a lactation consultant.
5. When finished, turn off the pump and carefully disassemble it.

5.2 Discreet Use

The Elvie Pump's compact design allows it to be worn inside a standard nursing bra, providing discretion during use.

Silent, wearable
electric breast pump

***Fits in your bra,
and your life***



Tube-free



Discreet



Silent



Gentle
suction



Advanced features
and app control



Image 5.1: A user demonstrating the discreet fit of the Elvie Pump when worn inside a bra.

5.3 App Control and SmartRhythm Pumping

The Elvie Pump connects to a mobile application, allowing users to control the pump, monitor milk volumes in real-time, and track pumping history. The app also provides access to SmartRhythm pumping modes for personalized expression.

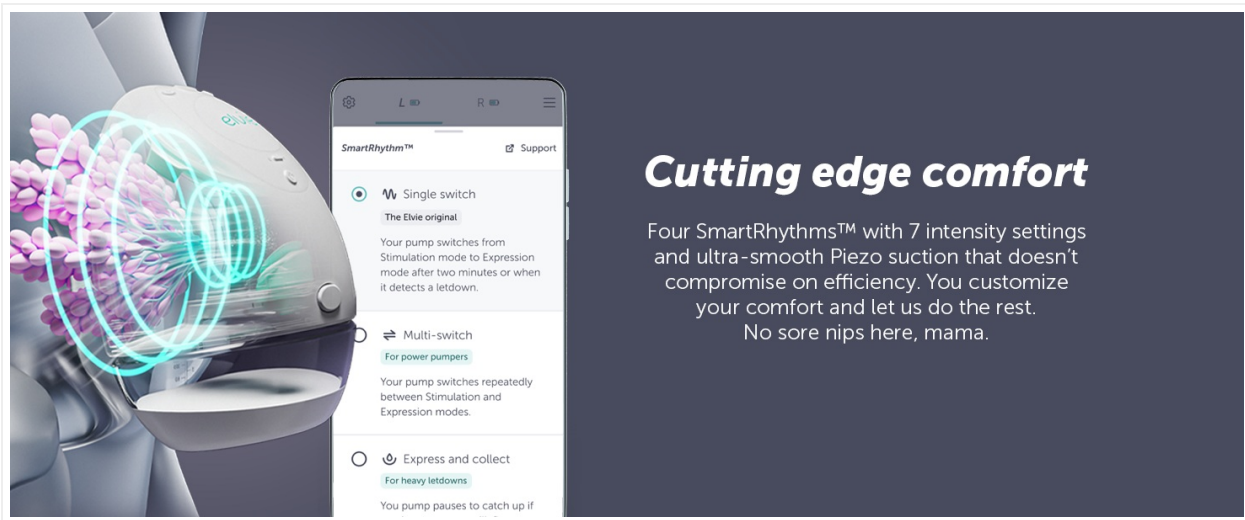


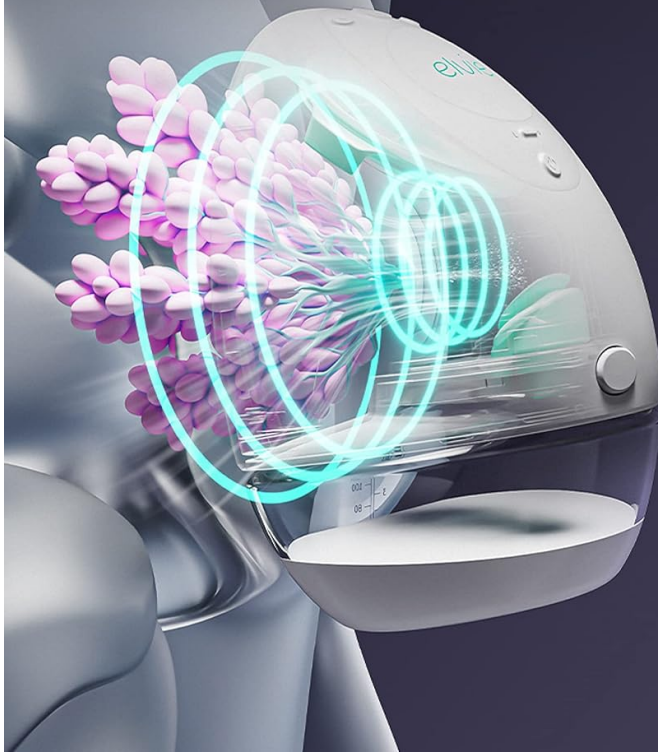
Image 5.2: The Elvie app interface, displaying session duration, milk volume, and control options for the pump.

SmartRhythm Modes:

- **Multi-Switch:** Designed for power pumping sessions.
- **Express and Collect:** Suitable for managing heavy let-downs.
- **Slow and Gentle:** Provides a softer suction for sensitive nipples.

New SmartRhythm™ pumping

Optimize your milk output with 3 new rhythms



Multi-Switch
for power pumping



Express and Collect
for heavy letdowns



Slow and Gentle
for sensitive nipples

Image 5.3: Visual representation of the SmartRhythm pumping technology, highlighting different modes for optimized milk output.

6. CLEANING AND MAINTENANCE

Proper cleaning and maintenance are essential for hygiene and the longevity of your Elvie Pump.

1. After each pumping session, disassemble the pump according to the manufacturer's instructions.
2. Rinse all breast pump parts that came into contact with milk (e.g., breast shield, spout, valve, bottle) with cold water immediately.
3. Wash these parts with hot, soapy water.
4. Rinse again thoroughly with clean water.
5. Allow the parts to air dry completely on a clean surface or pat them dry with a clean towel.
6. It is recommended to sterilize your pump parts daily, either by boiling or using a steam sterilizer. Refer to your pump's specific instructions for recommended sterilization methods.

The Elvie Pump components are made from silicone, which is durable and easy to clean.



Image 6.1: Illustration of the cleaning process for Elvie Pump components, emphasizing ease of cleaning.

7. TROUBLESHOOTING

If you encounter issues with your Elvie Pump, consider the following common troubleshooting steps:

- **Low Milk Output:** Ensure the breast shield is correctly sized and positioned for a proper seal. Check that all pump parts are assembled securely and that suction settings are appropriate for your comfort.
- **App Connectivity Issues:** Verify that Bluetooth is enabled on your smartphone and that the Elvie app is updated to the latest version. Ensure the pump hubs are charged.
- **Milk Leakage/Spillage:** Confirm that all components are correctly assembled and sealed. Ensure your bra provides adequate support to hold the pump firmly against your breast, maintaining a consistent seal. Avoid leaning forward excessively during pumping.
- **Pump Not Turning On/Charging:** Check that the USB charging cable is properly connected to both the pump hub and a power source. Allow sufficient time for charging.

For persistent issues, refer to the official Elvie support resources or contact customer service.

8. PRODUCT SPECIFICATIONS



Image 8.1: Side and front views of the Elvie Pump, illustrating its compact dimensions and internal structure.

Specification	Detail
Product Dimensions	9 x 9 x 10 inches; 7.9 ounces
Batteries	1 Lithium Ion battery required (included)
Operation Mode	Automated, Electric
Flange Diameter	24 Millimeters (additional sizes included)
Special Feature	Double Pump
Material	Silicone
Manufacturer	Chiaro Technology Limited
ASIN	B0C4FT6Q1F

9. WARRANTY AND SUPPORT

9.1 Warranty Information

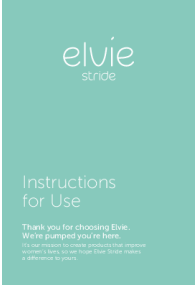

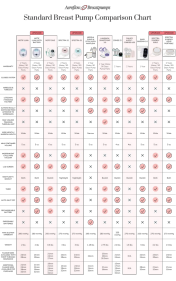
The Elvie Pump typically comes with a 2-year warranty. Please refer to the official Elvie website or your purchase documentation for specific warranty terms and conditions, as these may vary by region and retailer.

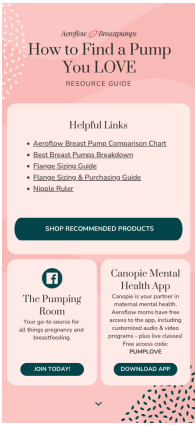
9.2 Customer Support

For further assistance, technical support, or to inquire about replacement parts, please visit the official Elvie website or contact their customer service department directly. Contact details can usually be found on the product packaging or the manufacturer's website.

© 2023 Elvie. All rights reserved.

Related Documents - B0C4FT6Q1F

	<p>Elvie Stride Instructions for Use: Comprehensive Breast Pump Guide</p> <p>Detailed instructions and user guide for the Elvie Stride breast pump. Learn about setup, operation, safety, cleaning, troubleshooting, and product specifications to maximize your pumping experience.</p>
	<p>Elvie Trainer Post-Sales Support and Troubleshooting Guide</p> <p>Comprehensive post-sales support, troubleshooting guide, and FAQs for the Elvie Trainer, covering connection issues, charging, usage, safety, and warranty.</p>
	<p>Standard and Hands-Free Breast Pump Comparison Chart</p> <p>Compare features, warranty, suction strength, and more for popular breast pumps from brands like Motif, Spectra, Medela, Lansinoh, Elvie, and Momcozy. Includes standard and hands-free models.</p>



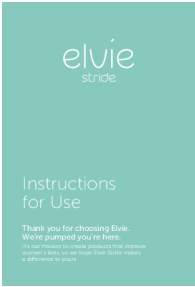
[How to Find a Breast Pump You Love: Aeroflow Resource Guide](#)

Aeroflow Breastpumps provides a comprehensive resource guide to help mothers select the ideal breast pump, detailing pump types, features, and essential considerations for pumping needs.

A detailed comparison chart titled 'Breast Pump Comparison Chart' with columns for Brand, Model, Type, Suction, Battery Life, and Reviews. It lists various brands and models, including Medela, Spectra, Elvie, Willow, and more, with corresponding icons and brief descriptions of their features and specifications.

[Breast Pump Comparison Chart: Features, Specs, and Reviews](#)

Compare popular breast pumps from leading brands like Medela, Spectra, Elvie, Willow, and more. Find the best breast pump based on mobility, suction power, battery life, and additional features.



[Elvie Stride Instructions for Use: Comprehensive Breast Pump Guide](#)

Detailed instructions and user guide for the Elvie Stride breast pump. Learn about setup, operation, safety, cleaning, troubleshooting, and product specifications to maximize your pumping experience.