

Comfort CONW100

Comfort Intense Fabric Fresh Liquid Conditioner User Manual

Model: CONW100

1. PRODUCT OVERVIEW

The Comfort Intense Fabric Fresh Liquid Conditioner is designed to provide refreshing freshness for your athleisure wear. It features motion-activated technology that releases a vibrant fruity and floral fragrance with hints of sandalwood, orange, muguet, mint, and rose heart. This product also incorporates exclusive Odour Neutralising Technology to eliminate malodours, ensuring your clothes remain fresh and you feel confident throughout the day.



Figure 1.1: Comfort Intense Fabric Fresh Liquid Conditioner 1 Ltr Pouch.

Key Features:

- **Motion-Activated Technology:** Releases fragrance as you move, ensuring long-lasting freshness.
- **Odour Neutralising Technology:** Effectively eliminates malodours from clothes.
- **Refreshing Fragrance:** A blend of fruity notes like pineapple, with a soft floral bouquet and tea aromas, including orange, muguet, mint, and rose heart.
- **Suitable for Athleisure:** Specifically formulated for active wear.

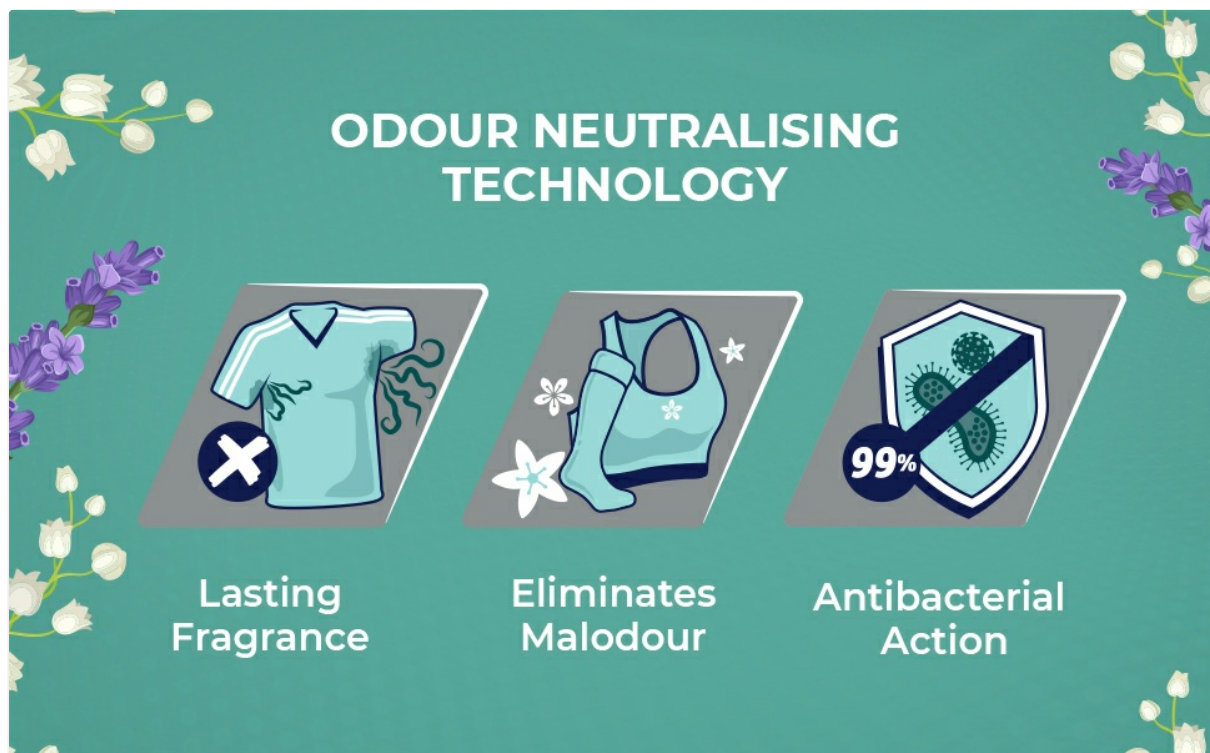


Figure 1.2: Key benefits of Comfort Intense, including lasting fragrance, malodour elimination, and antibacterial action.

2. SAFETY INFORMATION

Please read and understand the following safety precautions before using the product:

- **Keep Out of Reach of Children:** Store the product in a secure location inaccessible to children and pets.
- **Avoid Eye Contact:** In case of contact with eyes, rinse immediately and thoroughly with plenty of water. If irritation persists, seek medical advice.
- **Do Not Ingest:** This product is for external use only. If swallowed, do not induce vomiting. Seek immediate medical attention.
- **Do Not Pour Directly on Clothes:** Always dilute the fabric conditioner as per the instructions to avoid staining or damage to fabrics.
- **Septic Tank Safe:** When used as directed, this product is safe for septic tank systems.



Figure 2.1: Important safety warnings and usage guidelines printed on the back of the product pouch.

3. HOW TO USE (SETUP & OPERATING INSTRUCTIONS)

Follow these instructions for optimal results and to ensure the longevity of your clothes.

General Guidelines:

- Always use Comfort Intense during the **last rinse cycle** of your wash.
- Do not rinse clothes again with water after soaking in Comfort.

Usage Methods:

1. Bucket Wash (Hand Wash):

- After washing clothes with laundry detergent, pour $\frac{1}{2}$ a cap of Comfort Intense into a bucket of water.
- Soak clothes in this solution for 15 minutes.
- Remove clothes and dry them. Do not rinse again.

2. Semi-Automatic Washing Machine:

- Wash clothes with detergent as usual.
- Pour **1 cap** of Comfort Intense into the machine tub in clean water during the **last rinse cycle**.

3. Top Load Washing Machine:

- If your machine has a softener compartment, pour **1 cap** of Comfort Intense into it at the start of the wash cycle.
- Otherwise, pour **1 cap** of Comfort Intense into the machine tub during the **last rinse cycle**.

4. Front Load Washing Machine:

- Pour **1 cap** of Comfort Intense into the softener/conditioner compartment at the same time as you add detergent.

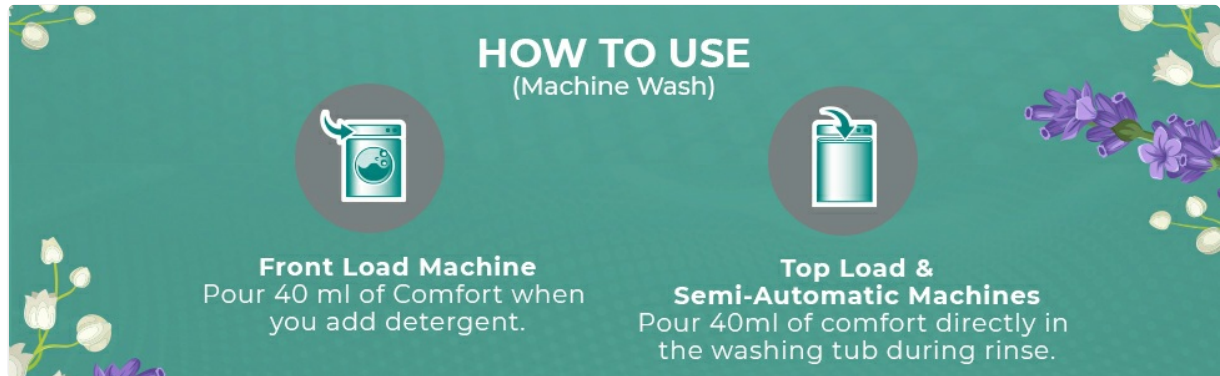


Figure 3.1: Visual guide for machine wash instructions for Comfort Intense.

4. STORAGE AND MAINTENANCE

Proper storage ensures the product maintains its quality and effectiveness.

- **Storage:** Store the Comfort Intense pouch in a cool, dry place, away from direct sunlight and extreme temperatures.
- **Seal Properly:** After each use, ensure the cap is securely closed to prevent spillage and maintain freshness.
- **Avoid Freezing:** Do not allow the product to freeze, as this may affect its consistency and performance.

5. TROUBLESHOOTING

Here are some common issues and their potential solutions:

Issue: Clothes do not smell fresh after washing.

Possible Causes & Solutions:

- **Incorrect Dosage:** Ensure you are using the recommended amount of Comfort Intense as per the instructions for your wash type.
- **Added Too Early/Late:** Fabric conditioner should be added during the last rinse cycle. If added too early, it might be washed away.
- **Overloaded Machine:** An overloaded washing machine may not allow proper distribution of the conditioner. Reduce load size.

Issue: Residue or spots on clothes.

Possible Causes & Solutions:

- **Direct Application:** Never pour Comfort Intense directly onto clothes. Always dilute it or add it to the dispenser.
- **Overdosing:** Using too much conditioner can leave residue. Stick to the recommended dosage.
- **Dispenser Clogged:** Clean your washing machine's dispenser regularly to prevent buildup.



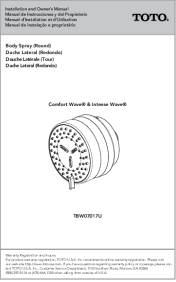



6. PRODUCT SPECIFICATIONS

Attribute	Detail
Brand	Comfort
Item Model Number	CONW100
Manufacturer	Hindustan Unilever Limited
Product Dimensions (LxWxH)	26.5 x 18 x 4.5 cm
Item Weight	1 kg (1000 Grams)
Net Quantity	1000.0 millilitre
Item Form	Liquid
Scent	Floral
First Available Date	5 May 2023

7. WARRANTY AND SUPPORT

For any product-related queries, concerns, or support, please contact the manufacturer directly.

- **Manufacturer:** Hindustan Unilever Limited
- **Consumer Care (India):**
 - **Toll-Free Number:** 1800-10-2221
 - **Email:** LEVER.CARE@UNILEVER.COM
- **Warranty:** Specific warranty details are not provided for this consumable product. Please refer to the manufacturer's general policies or contact consumer care for further information regarding product quality and satisfaction guarantees.

	<p>Siemens SIMATIC HMI Comfort Panels Operating Instructions</p> <p>Detailed guide for Siemens SIMATIC HMI Comfort Panels, covering installation, commissioning, operation, maintenance, and technical details for models like KP400, TP700, and others. Includes safety guidelines and system configuration.</p>
	<p>Comfort Dura Portable Air Conditioner User Manual</p> <p>This user manual provides comprehensive instructions for the Comfort Dura Portable Air Conditioner, covering setup, operation, maintenance, and troubleshooting. Learn how to use your portable air conditioner effectively for cooling, heating, and dehumidifying your space.</p>
	<p>TOTO TBW07017U Round Body Spray: Installation and Owner's Manual</p> <p>Comprehensive guide for installing and maintaining the TOTO TBW07017U Round Body Spray, featuring Comfort Wave® & Intense Wave® technology. Includes care instructions, warnings, included parts, installation steps, and warranty information.</p>
	<p>Horizon Fitness Ergometer Bedienungsanleitung: Comfort Serie Modelle</p> <p>Umfassende Anleitung für Horizon Fitness Fahrradergometer der Comfort Serie (Comfort 3, 5i, 6i, 7i, 8i, Ri). Enthält Montage-, Sicherheits- und Bedienungshinweise sowie Trainingsprogramme.</p>
	<p>COSTWAY FP10583DE Mobile Air Conditioner User Manual</p> <p>Comprehensive user manual for the COSTWAY FP10583DE mobile air conditioner. Learn about operation, installation, safety, and troubleshooting for optimal home comfort.</p>
	<p>Carrier 50ES-A and 50VL-C Air Conditioner Owner's Manual</p> <p>Owner's information manual for Carrier Comfort 13 SEER and 14 SEER single and three-phase air conditioner systems using Puron (R-410A) refrigerant. Includes safety information, operating instructions, maintenance guidelines, and troubleshooting tips.</p>