

Manuals+

[Q & A](#) | [Deep Search](#) | [Upload](#)

manuals.plus /

› [Lavales](#) /

› [Lavales ML301 Bluetooth 5.3 Wireless Audio Transmitter Adapter User Manual](#)

Lavales ML301

Lavales ML301 Bluetooth 5.3 Wireless Audio Transmitter Adapter User Manual

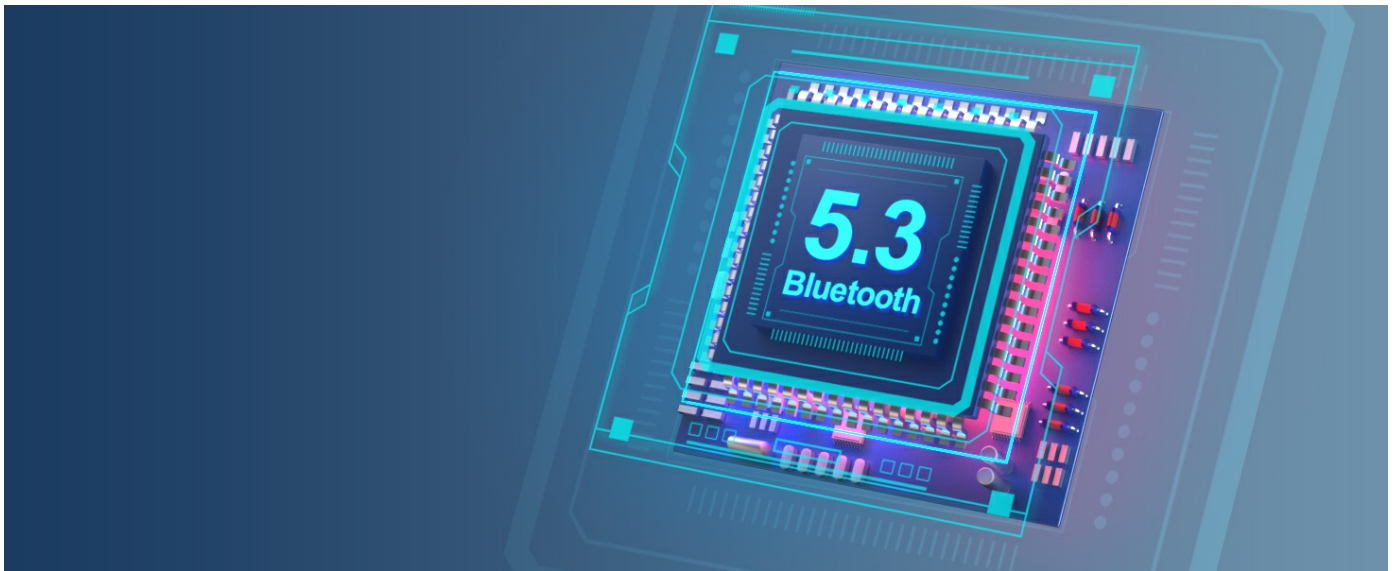
Model: ML301

1. INTRODUCTION

The Lavales ML301 is a versatile 2-in-1 Bluetooth 5.3 audio adapter designed to enhance your audio experience. It functions as both a transmitter (TX mode) and a receiver (RX mode), allowing you to wirelessly connect various audio devices. This manual provides detailed instructions for setup, operation, and troubleshooting to ensure optimal performance of your ML301 adapter.

2. KEY FEATURES

- **2-in-1 Functionality:** Easily switch between Transmitter (TX) and Receiver (RX) modes.
- **Bluetooth 5.3 Technology:** Provides stable, fast, and reliable wireless connections with improved power efficiency.
- **Low Latency Audio:** Supports aptX Low Latency codec for audio synchronization with video, reducing delay to less than 40ms.
- **High-Fidelity Sound:** Features aptX-HD decoding technology for crystal-clear, CD-quality stereo sound (24Bit/48Hz).
- **Dual Link Support:** Connects up to two Bluetooth headphones or earbuds simultaneously in TX mode.
- **Wide Compatibility:** Compatible with all 3.5mm Aux jacks, suitable for use with TVs, PCs, airplane entertainment systems, car stereos, and wired speakers.
- **Extended Battery Life:** Offers up to 18 hours of playtime on a single charge.
- **Compact and Portable Design:** Small and lightweight for easy transport and use on the go.



The Lavales ML301 features an advanced Bluetooth 5.3 chip for stable and efficient wireless connectivity.



The ML301 offers an extended wireless range of up to 100 feet (30 meters).

3. PACKAGE CONTENTS

Verify that all items are present in your package:

What's in the Box?



1 ML302 Bluetooth Adapter



2 3.5mm Cable (35 inch)



3 Type-C to USB Cable



4 User Manual

The package includes the ML301 Bluetooth Adapter, a 3.5mm audio cable, a Type-C to USB charging cable, and the user manual.

- 1 x Lavales ML301 Bluetooth Adapter
- 1 x 3.5mm Audio Cable (35 inches)
- 1 x Type-C to USB Charging Cable
- 1 x User Manual

4. PRODUCT OVERVIEW

Familiarize yourself with the components and indicators of your Lavales ML301 adapter.

Fly high with cordless joy -
using AirPods and wireless
headphones for in-flight fun!

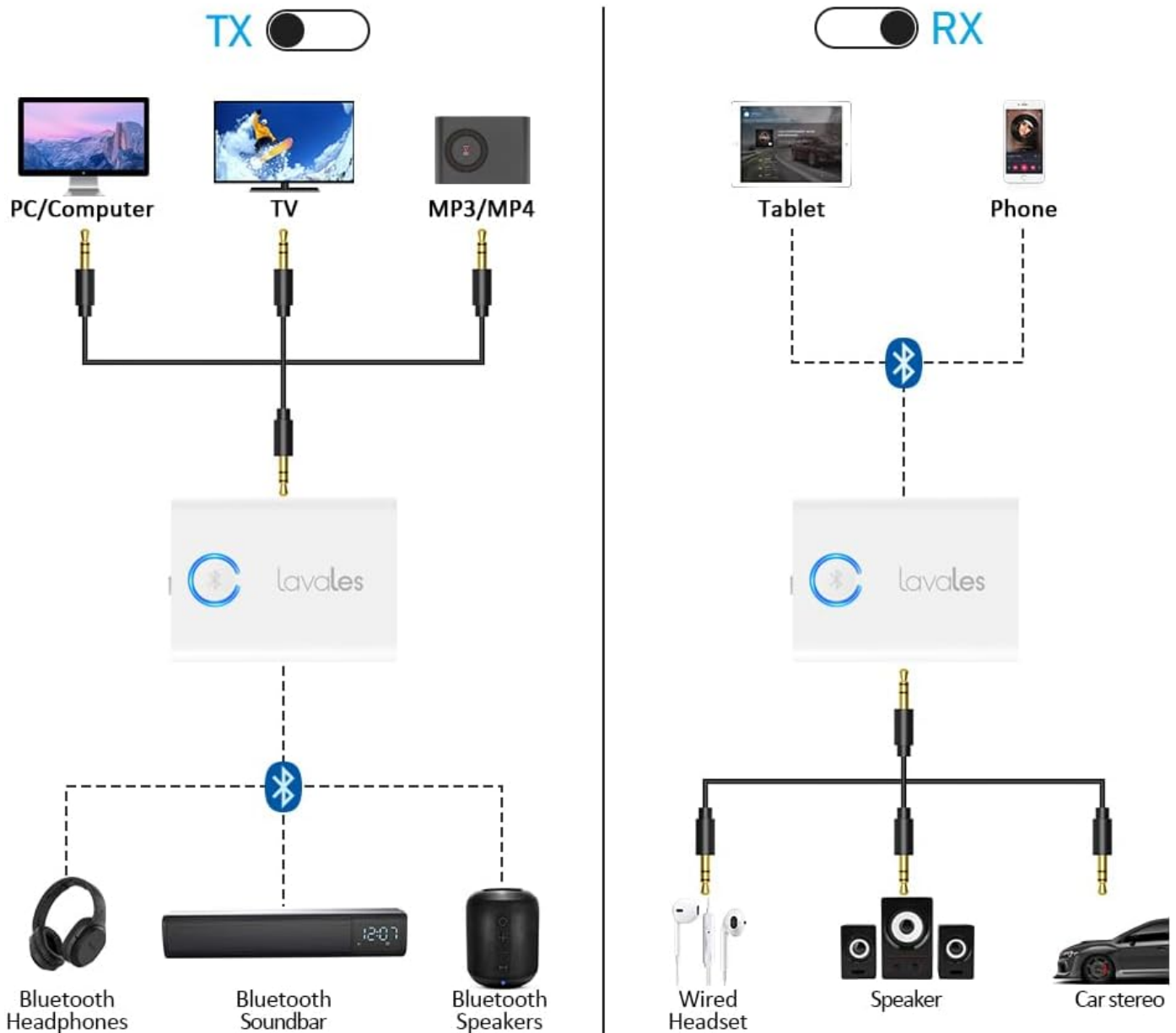


FASTEN SEAT BELT WHILE SEATED
EN POSITION ASSISE, GARDER LA CEINTURE
ATTACHEE EN POSITION DE SAUVEPAGE SOUS LE SIEGE

The Lavales ML301 is designed to be compact and portable.

2-IN-1

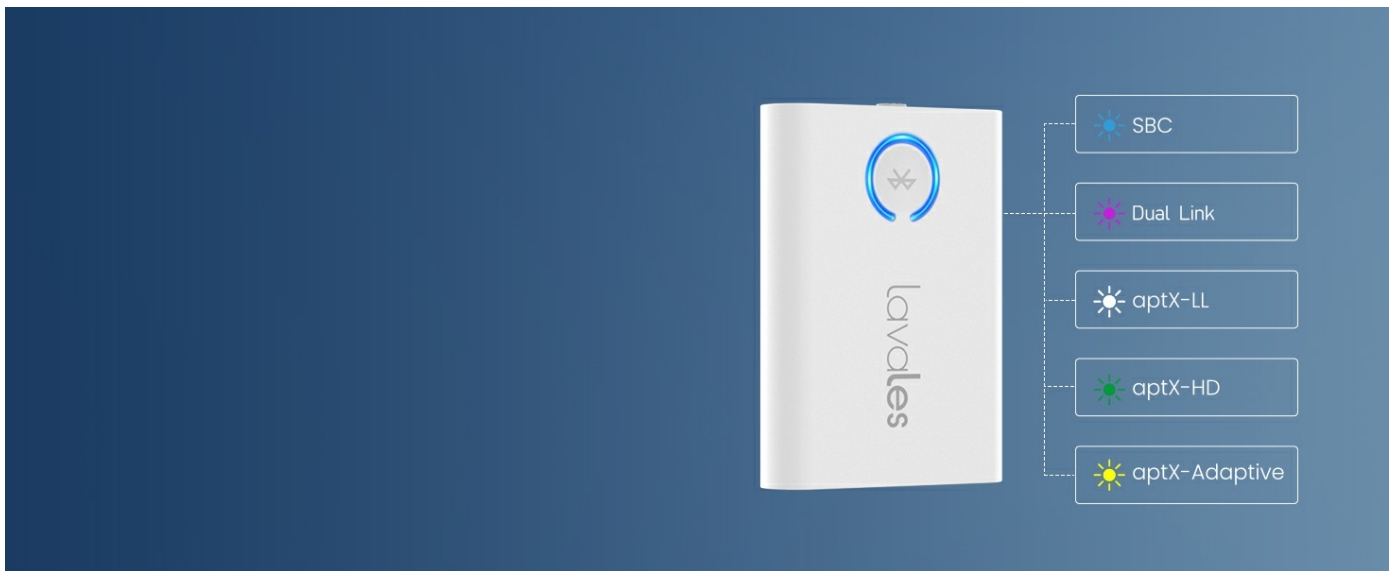
Bluetooth Transmitter and Receiver



The ML301 functions as both a Transmitter (TX) and a Receiver (RX).

Indicator Lights and Modes

- **Blue Light:** Indicates standard Bluetooth pairing or connection.
- **Green Light:** Indicates aptX-HD or aptX-Adaptive codec is active.
- **Purple Light:** Indicates Dual Link status (two devices connected simultaneously).
- **TX/RX Switch:** Slide to select Transmitter (TX) or Receiver (RX) mode.



The LED indicator changes color to show the active audio codec and connection status.

Your browser does not support the video tag.

This short video demonstrates the indicator light changes on the Lavales ML301, showing different colors for various connection statuses and audio codecs.

5. SETUP GUIDE

5.1 Charging the Device

Before initial use, fully charge your Lavales ML301 adapter. Connect the provided Type-C USB cable to the charging port on the adapter and the other end to a USB power source (e.g., wall adapter, computer USB port). The indicator light will show charging status and turn off when fully charged.

5.2 Mode Selection (TX/RX)

The ML301 features a physical switch to select between Transmitter (TX) and Receiver (RX) modes. Slide the switch to the desired mode before connecting or pairing.

5.3 Pairing in TX Mode (Transmitter)

In TX mode, the ML301 transmits audio from a non-Bluetooth device to Bluetooth headphones or speakers.

1. Slide the switch to **TX** mode.
2. Connect the ML301 to your audio source (e.g., TV, PC, airplane entertainment system) using the 3.5mm audio cable.
3. Power on the ML301. It will automatically enter pairing mode, indicated by a flashing blue light.
4. Put your Bluetooth headphones or speakers into pairing mode.
5. The ML301 will automatically search for and connect to your Bluetooth audio device. Once connected, the indicator light will turn solid blue (or green/yellow if aptX codecs are active).

5.4 Pairing in RX Mode (Receiver)

In RX mode, the ML301 receives audio from a Bluetooth-enabled device (e.g., smartphone, tablet) and outputs it to a wired audio system (e.g., wired speakers, car stereo).

1. Slide the switch to **RX** mode.
2. Connect the ML301 to your wired audio system using the 3.5mm audio cable.
3. Power on the ML301. It will automatically enter pairing mode, indicated by a flashing blue light.
4. On your smartphone or tablet, enable Bluetooth and search for "Lavales ML301" in the list of available devices.

5. Select "Lavales ML301" to connect. Once connected, the indicator light will turn solid blue (or green/yellow if aptX codecs are active).

5.5 Dual Link Pairing (TX Mode Only)

The ML301 can connect to two Bluetooth headphones simultaneously in TX mode.

1. Follow steps 1-5 for standard TX mode pairing to connect the first pair of headphones.
2. Once the first headphone is connected, put the second pair of Bluetooth headphones into pairing mode.
3. The ML301 will automatically search for and connect to the second device. The indicator light will turn purple when both devices are successfully connected.

6. OPERATING INSTRUCTIONS

6.1 Using in TX Mode (Transmitter)

The TX mode allows you to transmit audio wirelessly from devices that lack Bluetooth functionality.

- **Airplane Entertainment:** Plug the ML301 into the 3.5mm audio jack of an airplane's in-flight entertainment system. Pair with your wireless headphones to enjoy movies or music.



Enjoy wireless audio on flights by connecting the ML301 to the airplane's audio jack.

- **TVs and PCs:** Connect the ML301 to the 3.5mm audio output of your TV or PC. Pair with your Bluetooth headphones for private listening without disturbing others.



Experience synchronized audio and video when using the ML301 with your TV and aptX-LL compatible headphones.

6.2 Using in RX Mode (Receiver)

The RX mode enables your wired audio systems to receive Bluetooth audio from your smartphone or tablet.

- **Car Stereo:** Plug the ML301 into your car's 3.5mm AUX input. Pair your smartphone with the ML301 to stream music wirelessly through your car's speakers.

Stream Music from Phone to Car Stereo

Built-in Bluetooth 5.3 Chip, Stable and Reliable



Stream music wirelessly from your phone to your car stereo using the ML301 in RX mode.

- **Wired Speakers/Headphones:** Connect the ML301 to your wired speakers or headphones. Pair your smartphone to enjoy wireless audio playback on your existing wired setup.

Experience Wireless HiFi Music in Receiver Mode

Enjoy crystal-clear, CD-quality stereo sound with 24bit/48Hz high-fidelity audio.

 aptX™ HD

RX



Revitalize your wired speakers by enabling Bluetooth connectivity with the ML301.

7. IMPORTANT NOTES AND SAFETY INFORMATION

Please observe the following important information for optimal performance and device longevity:

Please Note:

1

If your headphones **don't** support aptX-LL/Adaptive technology, the audio lag will be about 1-2 seconds.

Do **not** recommend use it on **music instrument** like electronic piano or guitars, latency will be serious.

2

3

AidPods series only support **SBC/AAC** formats, do not support other formats.

Do not recommend charge while using, it will **damage the battery** and influence the playtime.

4

5

Under **Dual Link** mode (Connect with 2 headphones at sametime), audio format will be **SBC only**, you cannot change audio formats into others

Key considerations for using your Lavales ML301 adapter.

- If your headphones or speakers do not support aptX-Low Latency or aptX-Adaptive technology, audio lag may be approximately 1-2 seconds.
- This product is not recommended for use with musical instruments such as electronic pianos or guitars, as significant latency may occur.
- AirPods series devices only support SBC/AAC audio formats and do not support other formats when connected to the ML301.
- Avoid charging the device while it is in use, as this can potentially damage the battery and affect its overall lifespan and playtime.
- When using Dual Link mode (connecting with two headphones simultaneously), the audio format will default to SBC only. Other audio formats cannot be selected in this mode.

8. TROUBLESHOOTING

If you encounter issues with your Lavales ML301, refer to the following common solutions:

- **No Audio/Poor Sound Quality:**

- Ensure the 3.5mm audio cable is securely connected to both the ML301 and the audio source/destination.
- Check the volume levels on both the ML301 and your connected audio device (headphones/speakers/phone).
- Verify that the ML301 is in the correct mode (TX for transmitting, RX for receiving).
- If experiencing buzzing or static, try using a different 3.5mm cable or power source.

- **Pairing Issues:**

- Ensure the ML301 and your Bluetooth audio device are both in pairing mode.
- Make sure the devices are within close proximity (within 1 meter) during pairing.
- Turn off and restart both the ML301 and your Bluetooth audio device, then attempt pairing again.
- Clear previous Bluetooth connections on your audio device if it has trouble connecting.

- **Audio Lag/Delay:**

- For minimal latency, ensure both the ML301 and your Bluetooth headphones/speakers support aptX-Low Latency or aptX-Adaptive technology.
- Some headphones may have a 'game mode' or 'low latency mode' that needs to be enabled.
- As noted, a 1-2 second delay is normal if aptX-LL/Adaptive is not supported by both devices.

- **Dual Link Not Working:**

- Ensure both headphones are in pairing mode when attempting to connect the second device.
- Remember that Dual Link mode will use the SBC audio format.

- **Device Not Powering On:**

- Ensure the device is fully charged. Connect it to a power source and allow it to charge for at least 30 minutes before attempting to power it on.

9. SPECIFICATIONS

Feature	Specification
Model Number	ML301
Bluetooth Version	5.3
Connectivity Technology	Wireless (Bluetooth)
Audio Codecs Supported	aptX-Low Latency, aptX-HD, aptX-Adaptive, SBC, AAC
Operating Modes	Transmitter (TX), Receiver (RX)
Battery Type	Lithium Polymer (included)
Battery Life (Approx.)	18 hours
Charging Port	USB Type-C
Audio Input/Output	3.5mm Aux Jack
Product Dimensions	2.05 x 1.5 x 0.43 inches (5.2 x 3.8 x 1.1 cm)

Feature	Specification
Item Weight	2.46 ounces (70 grams)
Material	Plastic

10. WARRANTY AND SUPPORT

For warranty information or technical support, please refer to the contact details provided in the product packaging or visit the official Lavales website. Keep your purchase receipt for warranty claims.