

[Manuals.plus](#) /

› [NDakter](#) /

› NDakter Bike Chain Lock Instruction Manual

**NDakter 2.62**

# NDakter Bike Chain Lock

## INSTRUCTION MANUAL

Model: 2.62 feet Long, 4 mm Thick

### 1. Product Overview

---

The NDakter Bike Chain Lock is a robust and secure solution designed to protect your bicycle, scooter, motorcycle, or other valuable items. Featuring a 5-digit resettable combination, a durable alloy steel chain, and a scratch-proof fabric cover, it offers both high security and convenience. This manual provides detailed instructions for setup, operation, maintenance, and troubleshooting to ensure optimal performance and longevity of your lock.



Figure 1: NDakter Bike Chain Lock (Black, 2.62 feet Long, 4 mm Thick)

## 2. Key Features

- **Secure & Resettable:** 5-digit resettable combination, offering 100,000 possible combinations for enhanced security.
- **Sturdy & Durable:** Constructed with 0.16-inch alloy steel chain and a zinc alloy lock cylinder, designed to be drill-resistant and anti-tech unlocking.
- **Scratch-Proof Fabric Protection:** High-quality polypropylene fabric wrap protects the chain, prevents scratches to your bike frame, and offers anti-hot/anti-icing hands properties.
- **Keyless Convenience:** Easy-to-set combination mechanism eliminates the need for keys.
- **Multi-Purpose:** Suitable for securing bikes, scooters, motorcycles, doors, gates, fences, and other

# 5-Digit Password Design

Convenience, Safe, Hard to crack



## Convenience

Keyless



## Safe

100,000 Possible Code



## Durable

Alloy lock core



Figure 2: Close-up of the 5-digit combination lock cylinder, highlighting keyless convenience and durability.

# 4mm Thick Chain

High security, anti-theft



Anti Shearing



Anti Cutting



Drill-Resistant



Anti Rust



Figure 3: Illustration of the 4mm thick alloy steel chain, emphasizing anti-shearing, anti-cutting, drill-resistant, and anti-rust properties.

## 3. Setup and Initial Use

Your NDakter Bike Chain Lock comes with a default combination of **00000**. Follow these steps to set your personalized 5-digit combination:

1. Unlock the lock using the default password **00000**.
2. Locate the "RESET" knob on the lock head. Rotate this knob 90 degrees according to the direction of the arrows (usually clockwise).
3. With the knob rotated, turn the digital wheels to set your new personal combination. Choose a memorable sequence of 5 digits.
4. Once your new combination is set, rotate the "RESET" knob back 90 degrees (counter-clockwise) to its original position. Your new password is now successfully set.
5. **Important:** Take a photo or write down your new combination and store it in a safe, memorable place. There is no master key or backdoor to reset the combination if forgotten.

# Easy to Set Your Password

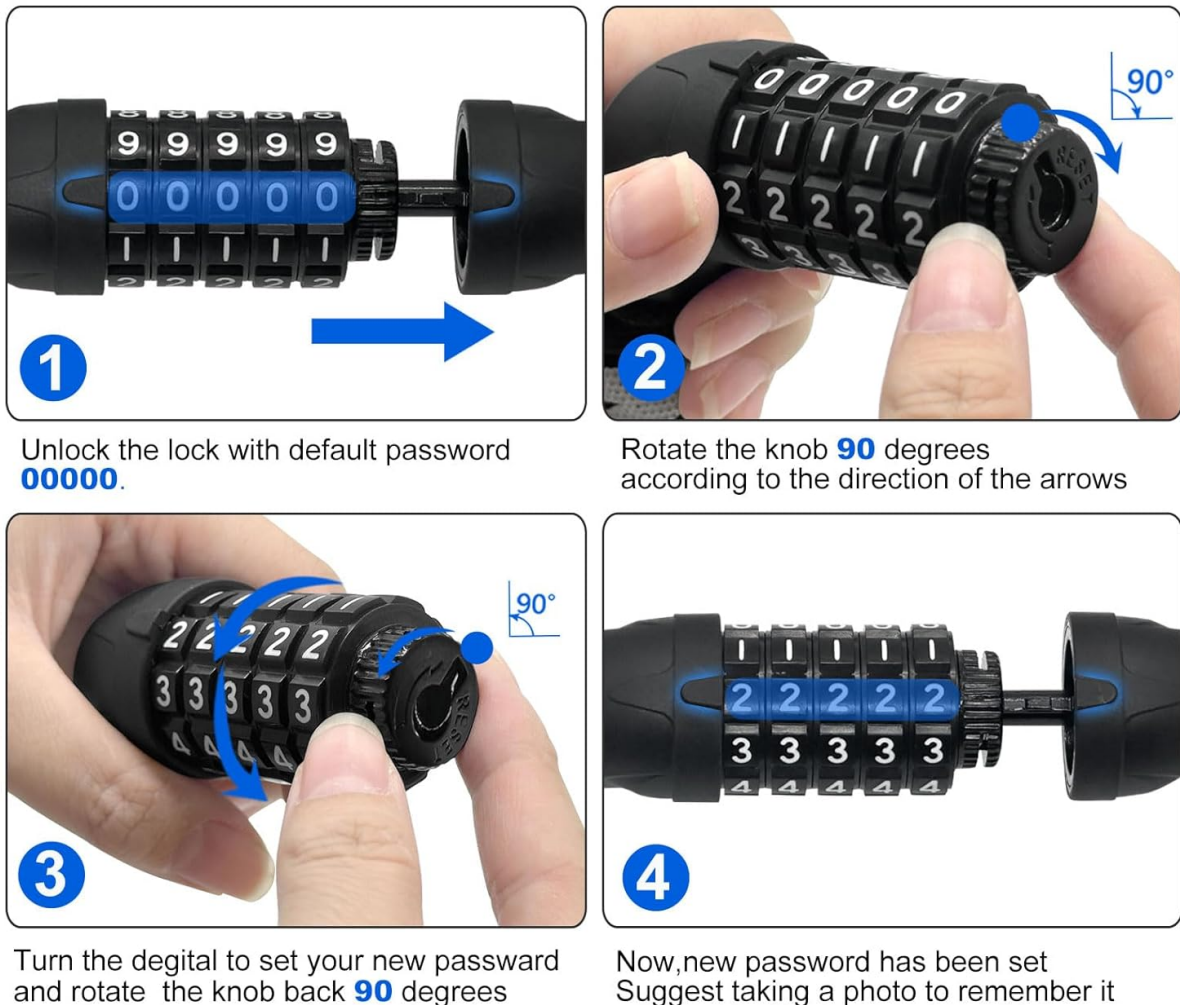


Figure 4: Visual guide for setting your personalized 5-digit combination.

## Video Guide: Setting Your Combination

Your browser does not support the video tag.

Video 1: Official NDakter Bike Chain Lock demonstration, including combination setting and usage examples. (Creator: NDakter)

## 4. Operating Instructions

To lock your item, simply wrap the chain around the desired object (e.g., bike frame, pole, gate) and insert the lock head into the receiving end. Once inserted, scramble the combination wheels to secure the lock. To unlock, align the wheels to your personalized 5-digit combination, and the lock head will release.

### Versatile Applications

The 2.62-foot length of this chain lock makes it versatile for various uses:

- **Bicycles:** Secure 1-2 bikes together, or lock your bike to a tree, railing, or bike rack.
- **Scooters & Motorcycles:** Ideal for securing electric scooters and motorcycles.
- **Home & Garden:** Can be used for doors, gates, fences, grills, ladders, and lawnmowers.

# Soft Cloth Fabric

Protects against scratches



Figure 5: The soft cloth fabric protects your bike frame from scratches during use.

# Widely Application



Bike



Electric Scooter



Motorcycle



Lawn mower

Figure 6: Examples of the lock's wide application, including bikes, electric scooters, motorcycles, and lawnmowers.

## 5. Maintenance and Care

To ensure the longevity and smooth operation of your NDakter Bike Chain Lock, follow these maintenance guidelines:

- **Keep Clean:** Regularly wipe down the lock and chain with a damp cloth to remove dirt and grime. Avoid harsh chemicals.
- **Lubrication:** Periodically apply a small amount of lubricant to the combination wheels and the locking mechanism to ensure smooth operation, especially after exposure to rain or dust.
- **Fabric Care:** The polypropylene fabric is designed for durability. If it gets dirty, it can be gently cleaned with mild soap and water. Ensure it is dry before storing.
- **Storage:** Store the lock in a dry place when not in use to prevent rust, although the alloy steel is designed to be anti-rust.

## 6. Troubleshooting

- **Forgotten Combination:** If you forget your personalized 5-digit combination, there is no master key or

backdoor to reset it. It is crucial to record your combination in a secure and memorable location immediately after setting it.

- **Lock Head Not Fitting Through Wheel:** The lock head's diameter is approximately 1.25 inches (3.2 cm). If you have a scooter, e-bike, or any item with a wheel gap/hole less than 1.25 inches (3.2 cm), the lock will not be able to pass through the wheel. In such cases, it is recommended to lock the scooter by wrapping the chain around its frame rather than attempting to pass it through the wheel gap.
- **Stiff Combination Wheels:** If the wheels become stiff or difficult to turn, apply a small amount of graphite lubricant or silicone spray to the moving parts and work the combination several times to distribute the lubricant.

## 7. Product Specifications

| Feature          | Detail   |
|------------------|--|
| Brand            | NDakter  |
| Model Name       | ND   |
| Lock Type        | Combination Lock (5-digit resettable)                    |
| Material         | Alloy Steel (chain), Zinc Alloy (lock cylinder)          |
| Chain Thickness  | 4 mm (0.16 inches)                                       |
| Length           | 2.62 feet (approx. 80 cm)                                |
| Weight           | Approx. 0.71 pounds (0.32 kg)                            |
| Special Features | Anti-Theft, Heavy Duty, Resettable, Scratch-Proof Fabric |

## 8. Important Safety Information

While the NDakter Bike Chain Lock is designed for high security, no bike lock is 100% theft-proof. To maximize the safety of your belongings:

- **Visibility:** Always try to lock your bike in well-lit, high-traffic areas.
- **Secure Objects:** Lock your bike to immovable objects like sturdy bike racks, lampposts, or permanent fixtures.
- **Layered Security:** For high-value items or in high-crime areas, consider using multiple types of locks (e.g., a chain lock combined with a U-lock).
- **Avoid Prolonged Absence:** Do not leave your bike out of your sight for extended periods, especially in high-risk locations.

## 9. Warranty and Support

For warranty information, product support, or any inquiries regarding your NDakter Bike Chain Lock, please refer to the contact information provided on the product packaging or visit the official NDakter store on Amazon. Your satisfaction is our priority.

[\*\*Visit the Official NDakter Store\*\*](#)