

**Yaheetech MM-00122238**

# Yaheetech 3ft Single Bed Frame

## INSTRUCTION MANUAL

### INTRODUCTION

---

Thank you for choosing the Yaheetech 3ft Single Bed Frame. This vintage iron platform bed is designed to provide a comfortable and stylish sleeping solution with its classic aesthetic and robust metal construction. This manual provides essential information for the safe and correct assembly, operation, maintenance, and troubleshooting of your new bed frame.



Image: The Yaheetech 3ft Single Bed Frame in white, showcasing its vintage iron design with a high headboard and footboard, set in a bedroom environment.

Key features include a high headboard for comfortable support, a strong and durable metal frame with a high load-bearing capacity, and 32 cm of clearance for under-bed storage. The design incorporates rounded corners, a smooth finish, and protective foot pads for safety and stability.

## IMPORTANT SAFETY INFORMATION

---

Please read and understand all instructions before beginning assembly. Keep this manual for future reference.

- **Installation:** We recommend 1 or more people to install this product.
- **Assembly Time:** The expected assembly time is approximately 1 hour.
- **Child Safety:** This product is not intended for use by children. Keep children away during assembly.
- **Heat Sources:** Keep away from fire or other heat sources.
- **Protective Gear:** We recommend wearing protective gloves during assembly.
- **Surface Protection:** Please follow the instruction manuals and use a pad or blanket to protect your floor and product from damage during assembly.

## IMPORTANT/WICHTIG/ATENCIÓN IMPORTANT/IMPORTANTE

	<p><b>EN</b> - We recommend <b>1</b> or more people to install.  <b>DE</b> - Wir empfehlen, dass die Montage von <b>1</b> oder mehreren Personen durchgeführt werden sollte.  <b>ES</b> - Recomendamos realizar el ensamble con <b>1</b> o más personas.  <b>FR</b> - Il est recommandé d'effectuer le montage à <b>1</b> personne(s) ou plus.  <b>IT</b> - È necessaria la presenza di <b>1</b> o più persone per il montaggio di questo prodotto.  <b>PL</b> - Zalecamy montaż przez co najmniej <b>1</b> osoby.  <b>NL</b> - We raden installatie door <b>1</b> of meer personen aan.  <b>SE</b> - Vi rekommenderar <b>1</b> eller flera personer är med och installera.</p>
	<p><b>EN</b> - The expected assembly time is <b>1 h</b>.  <b>DE</b> - Die Montagezeit beträgt durchschnittlich <b>1 h</b>.  <b>ES</b> - El tiempo aproximado de ensamble es de <b>1 h</b>.  <b>FR</b> - Le temps nécessaire est estimé à <b>1 h</b>.  <b>IT</b> - Il tempo previsto per il corretto assemblaggio è di <b>1 h</b>.  <b>PL</b> - Przewidywany czas montażu wynosi <b>1 h</b>.  <b>NL</b> - De verwachte montagetijd is <b>1 u</b>.  <b>SE</b> - Den förväntade monteringstiden är <b>1 timme</b>.</p>
	<p><b>EN</b> - Not intended for use by children.  <b>DE</b> - Nicht geeignet für Kinder.  <b>ES</b> - Producto no apto para niños.  <b>FR</b> - Produit non destiné à être utilisé par des enfants.  <b>IT</b> - Questo prodotto non è destinato all'uso da parte dei bambini.  <b>PL</b> - Produkt nie jest przeznaczony do użytku przez dzieci.  <b>NL</b> - Niet bedoeld voor gebruik door kinderen.  <b>SE</b> - Inte avsedd att användas av barn.</p>
	<p><b>EN</b> - Keep away from fire or other heat sources.  <b>DE</b> - Bitte von Feuer und Hitzequellen fernhalten.  <b>ES</b> - Manténgase alejado de las llamas y otras fuentes de calor.  <b>FR</b> - Tenir à distance des flammes et autres sources de chaleur.  <b>IT</b> - Tenere lontano dal fuoco o da altre fonti di calore.  <b>PL</b> - Przechowywać z dala od ognia lub innych źródeł ciepła.  <b>NL</b> - Uit de buurt van vuur en andere warmtebronnen houden.  <b>SE</b> - Håll borta från eld eller andra värmekällor.</p>
	<p><b>EN</b> - We recommend wearing protective gloves.  <b>DE</b> - Wir empfehlen das Tragen von Schutzhandschuhen.  <b>ES</b> - Recomendamos el uso de guantes de seguridad.  <b>FR</b> - Il est recommandé de porter des gants de protection.  <b>IT</b> - Per il processo di assemblaggio, consigliamo fortemente l'utilizzo di guanti protettivi.  <b>PL</b> - Zalecamy noszenie rękawic ochronnych.  <b>NL</b> - We raden aan om beschermende handschoenen te dragen.  <b>SE</b> - Vi rekommenderar att man använder skyddshandskar.</p>

Image: A diagram illustrating important safety and assembly recommendations, including the number of people for assembly, estimated time, child safety, heat warnings, and glove usage.

**EN** - Please follow the instruction manuals and use a pad to avoid damage during assembly.  
**DE** - Bitte folgen Sie der Anleitung und verwenden Sie eine Unterlage, um Beschädigungen bei der Montage zu vermeiden.  
**ES** - Por favor, siga las instrucciones del manual y utilice una cubierta o lona para proteger el producto y el suelo durante la instalación.  
**FR** - Suivez les instructions de la notice et utilisez une couverture ou une bâche pour protéger le produit et les sols pendant le montage.  
**IT** - Si prega di consultare il manuale illustrativo durante il montaggio e di utilizzare un cuscinetto per evitare possibili danni.  
**PL** - Należy postępować zgodnie z instrukcjami obsługi i używać podkładki, aby uniknąć uszkodzeń podczas montażu.  
**NL** - Volg de gebruiksaanwijzingen en gebruik een kussen om schade te vermijden tijdens montage.  
**SE** - Följ bruksanvisningarna och använd en dyna för att undvika skador under monteringen.

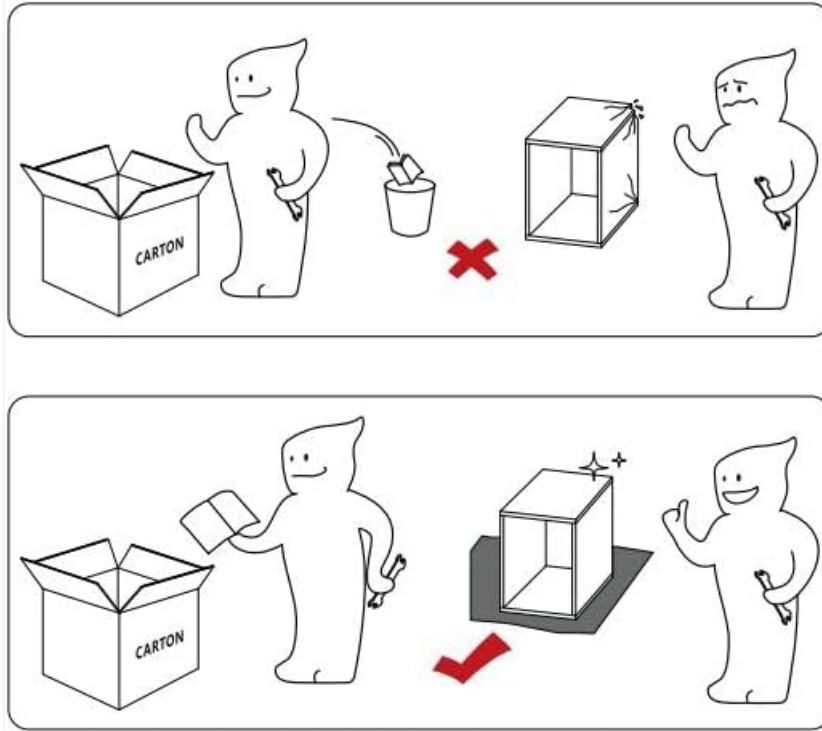


Image: A visual guide demonstrating the importance of using a protective pad or blanket on the floor during assembly to prevent damage to the product or flooring.

## SETUP AND ASSEMBLY

Your Yaheetech bed frame is designed for straightforward assembly. All necessary tools and numbered parts are provided to help you complete the setup efficiently.

### Assembly Steps:

- 1. Unpack and Identify Parts:** Carefully unpack all components and lay them out on a protected surface. Refer to the parts list (not provided in this manual, refer to included physical manual) to identify each piece. All parts are typically numbered for easy identification.
- 2. Assemble Headboard and Footboard:** Follow the specific instructions in your physical manual to connect the main components of the headboard and footboard.
- 3. Connect Side Rails:** Attach the side rails to the assembled headboard and footboard sections. Ensure all connections are secure.
- 4. Install Metal Slats:** Insert the metal slats into their designated notches on the bed frame. Ensure each pipe is aimed correctly at the notch and press firmly to fix it in place. These built-in slats are designed to prevent the mattress from sliding.



Image: A visual guide showing how to easily assemble the bed frame slats by aiming the metal pipe at the notch and pressing to secure.

5. **Secure Connections:** The frame is fastened with L-shaped plates for a more stable structure. Ensure all bolts and connections are tightened securely using the provided tools.



## SPECIFICATIONS

Standard Size:	3ft Single
Material:	Iron
Weight Capacity:	204.5 kg
Applicable Mattress Size:	190 cm× 90 cm(L×W)
Assembly Required:	Yes
Overall Dimensions:	197 cm× 96 cm× 104 cm(L×W×H)
Ground Clearance:	32 cm
Item Weight: 14.7 kg	Shipping Weight: 16.6 kg
Color:	White

Image: A close-up view of the bed frame's solid metal construction, highlighting the L-shaped plates used to ensure stability and durability.

Once all components are assembled and tightened, your bed frame is ready for use. Place your mattress on the integrated slats.

## OPERATING AND USAGE

The Yaheetech bed frame is designed for daily use, offering both comfort and practicality.

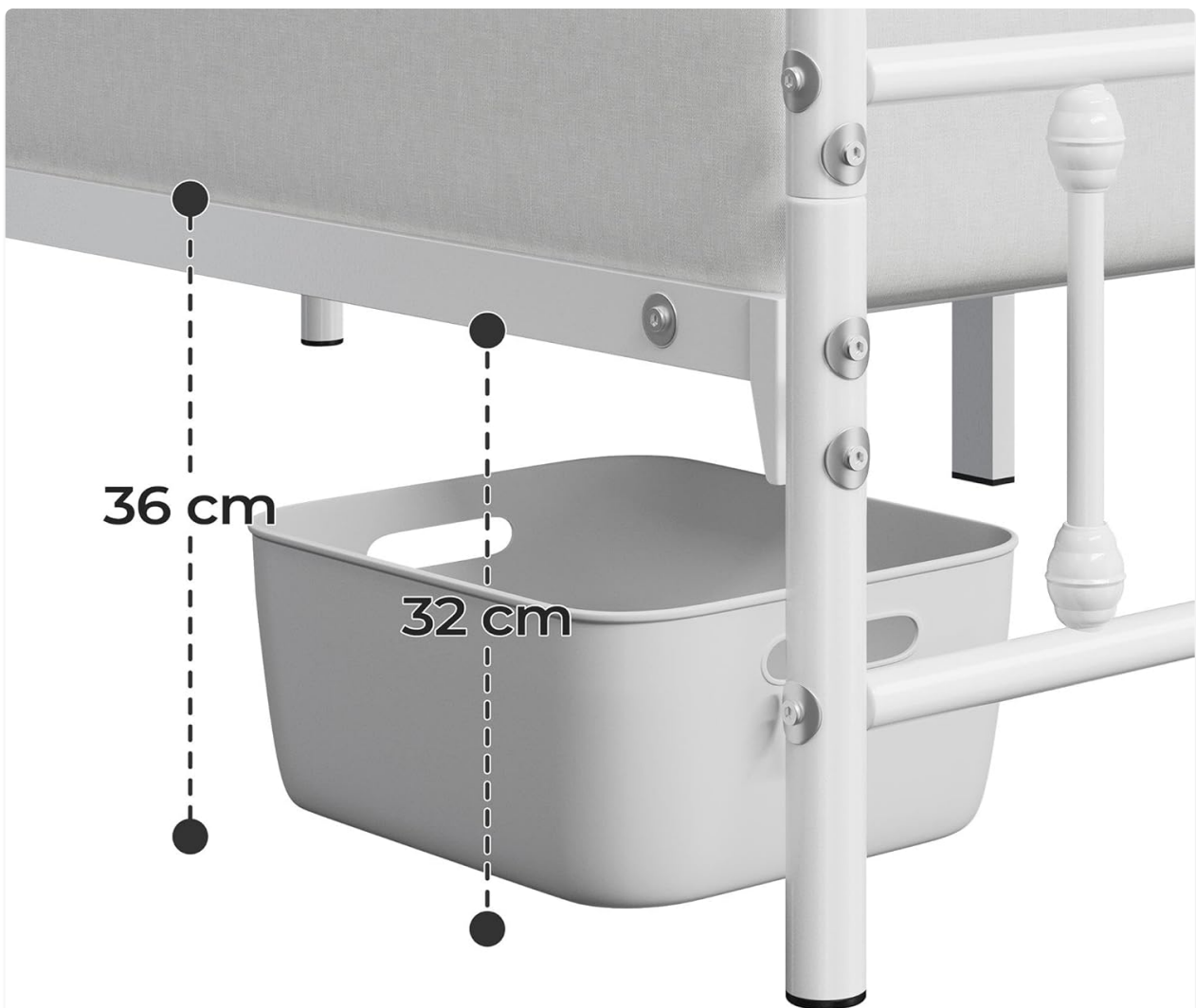
### Key Features in Use:

- **High Headboard:** The elevated headboard provides excellent back support, making it comfortable for reading, watching TV, or relaxing in bed.
- **Mattress Stability:** The embedded design with built-in metal slats helps to prevent your mattress from sliding, ensuring a stable sleeping surface.



Image: A diagram illustrating how the bed frame's embedded design and built-in slats effectively prevent the mattress from sliding, ensuring a secure fit.

- **Under-Bed Storage:** With 32 cm of ground clearance, the bed frame offers significant space underneath for storing boxes, luggage, or other items, helping to keep your bedroom tidy.



## 32 CM OF GROUND CLEARANCE

Make full use of the space under the bed for storage.

Image: A detailed view showing the 32 cm ground clearance under the bed frame, ideal for placing storage containers.

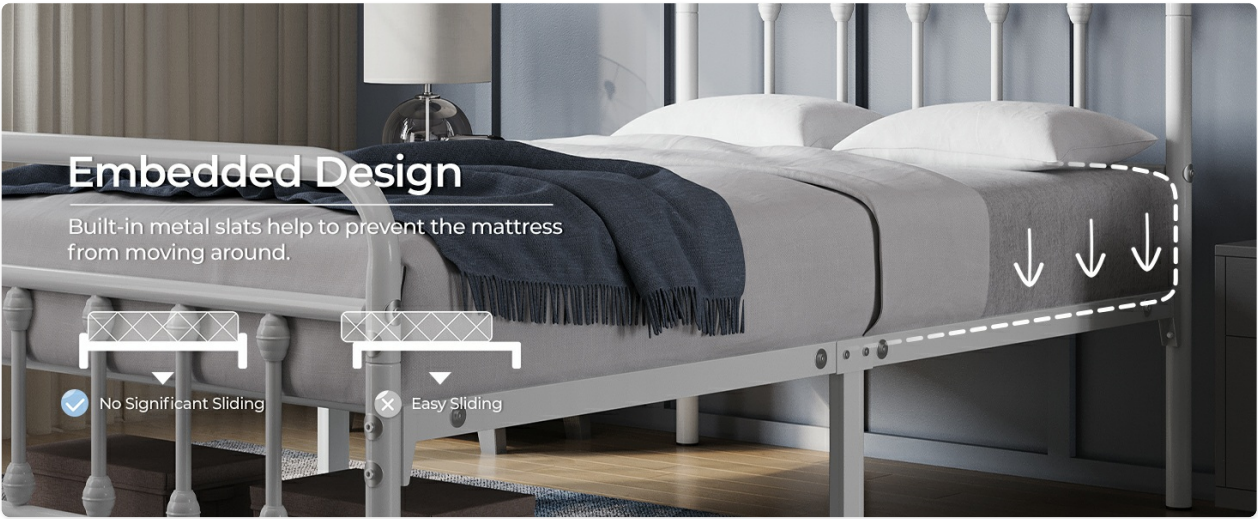


Image: A visual representation of the spacious under-bed storage area, highlighting the 36 cm overall height and 32 cm clearance for storage boxes.

## MAINTENANCE

Proper maintenance will ensure the longevity and continued performance of your bed frame.

- **Cleaning:** Wipe the metal frame with a soft, damp cloth. Avoid using harsh chemicals or abrasive cleaners, as they may damage the powder-coated surface.
- **Regular Checks:** Periodically check all bolts and connections to ensure they remain tight. Over time, normal use can cause fasteners to loosen. Tighten any loose bolts to maintain stability and prevent squeaking.
- **Avoid Overloading:** Do not exceed the maximum weight capacity of the bed frame (refer to specifications).

## TROUBLESHOOTING

If you encounter any issues with your bed frame, refer to the following common problems and solutions:

Problem	Possible Cause	Solution
Bed frame is wobbly or unstable.	Loose bolts or incorrect assembly.	Ensure all bolts are fully tightened. Review assembly steps to confirm correct installation of all parts, especially the L-shaped plates.
Squeaking noises.	Loose connections or friction between metal parts.	Tighten all bolts. If squeaking persists, apply a small amount of silicone lubricant to connection points.
Mattress slides on the frame.	Incorrect mattress size or issue with slat installation.	Ensure your mattress size matches the bed frame dimensions. Verify that all metal slats are properly seated in their notches.
Missing parts during assembly.	Packaging error or lost part.	Carefully check all packaging materials. Contact Yaheetech customer support for assistance.

# SPECIFICATIONS

Detailed specifications for the Yaheetech 3ft Single Bed Frame:

Feature	Detail
Standard Size	3ft Single
Material	Iron
Max. Weight Capacity	204.5 kg
Applicable Mattress Size	190 cm x 90 cm (LxW)
Assembly Required	Yes
Overall Dimensions (LxWxH)	197 cm x 96 cm x 104 cm
Ground Clearance	32 cm
Item Weight	16.2 kg
Color	White
Model Number	MM-00122238



3ft  
Single



Max. Weight  
Capacity  
204.5 kg



Applicable  
Mattress Size  
190 cm x 90 cm

Image: A detailed diagram illustrating the dimensions of the 3ft Single bed frame, including overall length, width, height, and ground clearance, along with key specifications.

## WARRANTY AND SUPPORT

For any questions, concerns, or assistance with your Yaheetech bed frame, please contact Yaheetech customer support. Refer to your purchase documentation for specific warranty details and contact information.

You can often find support contact details on the Yaheetech official website or through the retailer where you purchased the product.

<div><p>611805(TWIN)</p><p>1. Please read this instruction manual carefully before assembling the bed. 2. The bed frame is made of heavy-duty metal and is designed to support a mattress up to 12 inches thick. 3. The bed frame is designed to be used with a mattress that is 30 inches wide and 75 inches long. 4. The bed frame is designed to be used with a mattress that is 30 inches wide and 75 inches long.</p></div>	<p><a href="#">Yaheetech 611805(TWIN) Bed Frame Assembly Instructions</a></p> <p>Comprehensive assembly instructions for the Yaheetech 611805(TWIN) bed frame. This guide provides step-by-step instructions, parts lists, and important safety information for assembling your new bed.</p>
<div><p>IMPORTANT/WICHTIG/ATENCIÓN IMPORTANT/IMPORTANTE</p><p>1. Please read this instruction manual carefully before assembling the bed. 2. The bed frame is made of heavy-duty metal and is designed to support a mattress up to 12 inches thick. 3. The bed frame is designed to be used with a mattress that is 30 inches wide and 75 inches long. 4. The bed frame is designed to be used with a mattress that is 30 inches wide and 75 inches long.</p></div>	<p><a href="#">Yaheetech Bed Frame Assembly Instructions</a></p> <p>Comprehensive assembly guide for the Yaheetech Queen Size Metal Platform Bed with Upholstered Headboard. Includes parts list, step-by-step instructions, and safety information.</p>
<div><p>Yaheetech</p><p>613629(Full)</p><p>1. Please read this instruction manual carefully before assembling the bed. 2. The bed frame is made of heavy-duty metal and is designed to support a mattress up to 12 inches thick. 3. The bed frame is designed to be used with a mattress that is 30 inches wide and 75 inches long. 4. The bed frame is designed to be used with a mattress that is 30 inches wide and 75 inches long.</p></div>	<p><a href="#">Yaheetech 613629(Full) Bed Frame Assembly Instructions</a></p> <p>Detailed assembly instructions for the Yaheetech 613629(Full) bed frame, including parts list and step-by-step guidance.</p>
<div><p>IMPORTANT/WICHTIG/ATENCIÓN IMPORTANT/IMPORTANTE</p><p>1. Please read this instruction manual carefully before assembling the bed. 2. The bed frame is made of heavy-duty metal and is designed to support a mattress up to 12 inches thick. 3. The bed frame is designed to be used with a mattress that is 30 inches wide and 75 inches long. 4. The bed frame is designed to be used with a mattress that is 30 inches wide and 75 inches long.</p></div>	<p><a href="#">Yaheetech Metal Bed Frame Assembly Instructions   Twin Size</a></p> <p>Detailed, step-by-step assembly instructions for the Yaheetech metal bed frame. Includes parts list, safety warnings, and assembly guidance.</p>
<div><p>WARNING</p><p>1. Please read this instruction manual carefully before assembling the bed. 2. The bed frame is made of heavy-duty metal and is designed to support a mattress up to 12 inches thick. 3. The bed frame is designed to be used with a mattress that is 30 inches wide and 75 inches long. 4. The bed frame is designed to be used with a mattress that is 30 inches wide and 75 inches long.</p></div>	<p><a href="#">Yaheetech Metal Twin Bed Frame (Model #591898) Assembly Instructions</a></p> <p>This document provides assembly instructions for the Yaheetech Metal Twin Bed Frame, Model #591898. It includes a parts list, step-by-step assembly diagrams with textual descriptions, and important safety warnings.</p>
<div><p>IMPORTANT/WICHTIG/ATENCIÓN IMPORTANT/IMPORTANTE</p><p>1. Please read this instruction manual carefully before assembling the bed. 2. The bed frame is made of heavy-duty metal and is designed to support a mattress up to 12 inches thick. 3. The bed frame is designed to be used with a mattress that is 30 inches wide and 75 inches long. 4. The bed frame is designed to be used with a mattress that is 30 inches wide and 75 inches long.</p></div>	<p><a href="#">Yaheetech Minimalist Metal Platform Bed Assembly Instructions</a></p> <p>Step-by-step assembly guide for the Yaheetech Minimalist Metal Platform Bed, featuring a detailed parts list, safety warnings, and clear instructions for putting together your bed frame.</p>