

## IQUNIX ZX75-DS-SpeedsilverRGB

# IQUNIX ZX75 Dark Side RS Mechanical Keyboard User Manual

Model: ZX75-DS-SpeedsilverRGB

## 1. INTRODUCTION

---

Welcome to the user manual for your new IQUNIX ZX75 Dark Side RS 75% RGB Mechanical Keyboard. This manual provides detailed instructions on setting up, operating, and maintaining your keyboard to ensure optimal performance and longevity. Please read this manual thoroughly before using the product.

## 2. PRODUCT OVERVIEW

---

The IQUNIX ZX75 Dark Side RS is a compact 75% layout mechanical keyboard featuring 81 keys, designed for both aesthetics and functionality. It offers versatile connectivity options and customizable RGB lighting.

### Key Features:

- **Compact 75% Layout:** Streamlined 81-key design while retaining essential functions.
- **TTC Speedsilver Switches:** Durable switches with a long lifespan (up to 100 million hits) for fast and reliable input.
- **Multimedia Knob:** Conveniently located knob for volume control and playback/pause functions.
- **Detachable Magnetic Feet:** Adjustable feet for ergonomic typing comfort.
- **Tri-mode Connectivity:** Supports 2.4GHz wireless, Bluetooth 5.1, and USB-C wired connections.
- **Multi-Device Support:** Connect up to 3 devices simultaneously via Bluetooth with easy switching.
- **Personalized RGB Backlit:** Dynamic South-facing RGB effects with 7 modes and 16 million customizable colors.
- **Long Battery Life:** Rechargeable 6000 mAh battery offering extended usage.
- **Cross-Platform Compatibility:** Works with Mac and Windows operating systems, including additional MAC supplementary keycaps.

- **Hot-Swappable:** Allows for easy switch replacement without soldering.

## Product Visuals:



Figure 2.1: Top-down view of the IQUNIX ZX75 Dark Side RS mechanical keyboard with illuminated keys.



Figure 2.2: Overhead view of the IQUNIX ZX75 keyboard with 'ZX75 DARK SIDE' branding.



Figure 2.3: Close-up of the multimedia control knob on the IQUNIX ZX75 keyboard, showing its functions.

## Tri-Mode Connection



**Bluetooth 5.1**  
Allows up to 3 device  
at the same time



**2.4GHz mode**  
Faster response, lower  
power consumption



**Wired Type-C**  
Detachable cable design

Figure 2.4: Tri-mode connection options: Bluetooth 5.1, 2.4GHz, and Wired Type-C.

## Detachable feet design

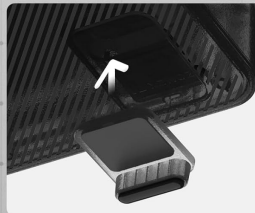
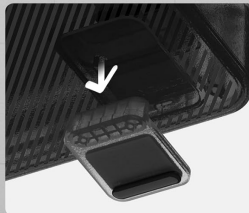
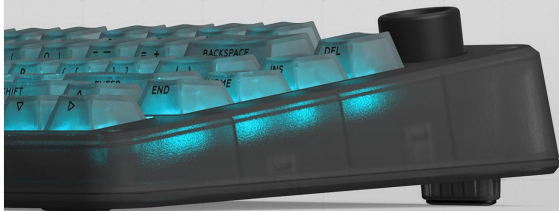


Figure 2.5: Detachable feet design for adjustable typing angle.



**ZX75 DARK SIDE**

Figure 2.6: Examples of personalized RGB backlit effects.



Figure 2.7: Underside view of the keyboard.



Figure 2.8: 75% Layout with 81 keys.



Figure 2.9: Keyboard in a typical desk setup.

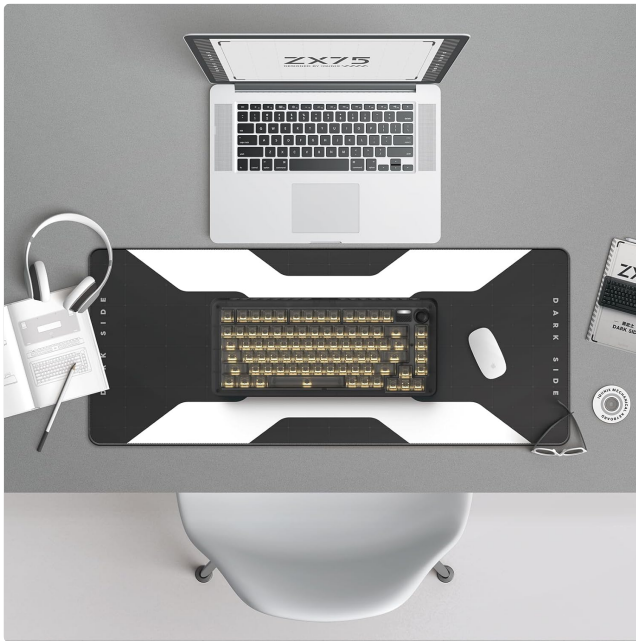


Figure 2.10: Angled view of the keyboard with illuminated keys.

## Product Videos:

Your browser does not support the video tag.

Video 2.1: Overview of the iQunix ZX75 Dark Side RS keyboard, showcasing its design and features.

Your browser does not support the video tag.

Video 2.2: Demonstration of the iQunix 75% Layout RGB Mechanical Keyboard's lighting effects.

Your browser does not support the video tag.

Video 2.3: Sound test of the IQUNIX Mechanical keyboard, highlighting its typing acoustics.

Your browser does not support the video tag.

Video 2.4: General overview of the iQunix ZX75 mechanical keyboard.

## 3. SETUP

---

### 3.1 Package Contents:

Before you begin, ensure all items are present in the package:

- IQUNIX ZX75 Dark Side RS Mechanical Keyboard
- USB-C Cable
- Keycap Puller
- Switch Puller
- Additional MAC supplementary keycaps
- User Manual (this document)

### 3.2 Connecting Your Keyboard:

The IQUNIX ZX75 supports three connection modes:

1. **Wired Mode (USB-C):**

- Connect the provided USB-C cable to the keyboard's USB-C port.
- Connect the other end of the cable to an available USB port on your computer.
- The keyboard will be automatically recognized and ready for use.

## 2. 2.4GHz Wireless Mode:

- Locate the 2.4GHz USB receiver (dongle) usually stored in a compartment on the keyboard.
- Plug the USB receiver into an available USB port on your computer.
- Ensure the keyboard's mode switch (usually on the back or side) is set to 2.4G.
- The keyboard should automatically connect.

## 3. Bluetooth 5.1 Mode:

- Ensure the keyboard's mode switch is set to BT (Bluetooth).
- On your computer or device, open Bluetooth settings.
- The keyboard can store up to 3 Bluetooth devices. Press and hold FN + 1, FN + 2, or FN + 3 to enter pairing mode for the respective slot (the indicator light will flash).
- Select "IQUNIX ZX75" from the list of available Bluetooth devices on your computer/device to pair.
- Once paired, you can switch between connected Bluetooth devices by pressing FN + 1/2/3.

## 3.3 Operating System Switching:

The keyboard is compatible with both Windows and macOS. To switch between operating system modes, hold **FN + TAB** for 5 seconds. The keyboard will adjust its key mappings accordingly. For macOS users, four additional MAC supplementary keycaps are included in the box to replace specific keys for a native Mac layout.

## 3.4 Charging the Battery:

The keyboard is equipped with a 6000 mAh rechargeable battery. When the battery is low, the indicator light will signal. Connect the keyboard via USB-C cable to a power source (computer USB port or USB wall adapter) to charge. A full charge provides up to 300 days of use via Bluetooth with backlighting off, or approximately 5 hours of daily use with backlighting.

# 4. OPERATING INSTRUCTIONS

---

## 4.1 Multimedia Knob Functions:

The multimedia rotation button located in the upper right corner of the keyboard provides quick control over audio and media playback:

- **Rotate Clockwise:** Increase volume.
- **Rotate Counter-clockwise:** Decrease volume.
- **Press Vertically:** Play/Pause media.

## 4.2 RGB Backlighting Control:

The keyboard features dynamic South-facing RGB backlighting with 7 preset modes and 16 million customizable colors. Use the dedicated software (available from the IQUNIX website) to personalize lighting effects, create custom profiles, and adjust brightness. Specific key combinations on the keyboard may also cycle through preset effects or adjust brightness (refer to the quick start guide or software manual for exact

key combinations).

### 4.3 Hot-Swappable Switches:

The IQUNIX ZX75 keyboard supports hot-swappable switches, allowing you to change the mechanical switches without soldering. This enables customization of typing feel and sound. To replace a switch:

1. Gently remove the keycap using the provided keycap puller.
2. Use the switch puller to carefully grip the switch from its top and bottom clips.
3. Pull the switch straight up to remove it from the PCB.
4. Align the pins of the new switch with the holes on the PCB.
5. Press the new switch firmly into place until it clicks. Ensure the pins are not bent.
6. Replace the keycap.

## 5. MAINTENANCE

---

Regular maintenance helps preserve the performance and appearance of your IQUNIX ZX75 keyboard.

### 5.1 Cleaning:

- **General Cleaning:** Use a soft, lint-free cloth slightly dampened with water or a mild cleaning solution to wipe down the keyboard surface. Avoid harsh chemicals.
- **Keycap Cleaning:** For deeper cleaning, remove keycaps using the keycap puller and wash them with mild soap and water. Ensure they are completely dry before reattaching.
- **Dust Removal:** Use compressed air to blow away dust and debris from between the keycaps and switches.

### 5.2 Storage:

When not in use for extended periods, store the keyboard in a cool, dry place away from direct sunlight and extreme temperatures. If storing for a long time, ensure the battery is partially charged (around 50%) to prolong its lifespan.

## 6. TROUBLESHOOTING

---

If you encounter issues with your IQUNIX ZX75 keyboard, refer to the following common troubleshooting steps:

- **Keyboard Not Responding (Wired):**
  - Ensure the USB-C cable is securely connected to both the keyboard and the computer.
  - Try a different USB port on your computer.
  - Test with a different USB-C cable if available.
- **Keyboard Not Connecting (2.4GHz/Bluetooth):**
  - Ensure the keyboard's mode switch is set to the correct wireless mode (2.4G or BT).
  - For 2.4GHz, ensure the USB receiver is properly plugged in and try a different USB port.
  - For Bluetooth, ensure Bluetooth is enabled on your device and try re-pairing the keyboard (FN + 1/2/3 for pairing mode).

- Check the keyboard's battery level and charge if necessary.
- **Keys Not Registering or Double-Typing:**
  - This could indicate a faulty switch. Since the keyboard is hot-swappable, try replacing the problematic switch with a spare one or a switch from a less frequently used key (e.g., Scroll Lock).
  - Ensure the switch is fully seated in the PCB.
- **RGB Lighting Issues:**
  - Ensure the backlighting is enabled (check keyboard shortcuts or software).
  - Update the keyboard firmware and software from the IQUNIX website.
- **Multimedia Knob Not Working:**
  - Ensure the keyboard is properly connected and recognized by your system.
  - Check if any software conflicts are present (e.g., other media control applications).

If the issue persists after trying these steps, please contact IQUNIX customer support for further assistance.

## 7. SPECIFICATIONS

---

Feature	Description
Model	ZX75-DS-SpeedsilverRGB
Keyboard Type	Mechanical Keyboard
Layout	75% Layout, 81 Keys
Switches	TTC Speedsilver Switches
Switch Lifespan	Up to 100 Million Keystrokes
Hot-Swappable	Yes
Connectivity	2.4GHz Wireless, Bluetooth 5.1, USB Type-C Wired
Battery Capacity	6000 mAh Lithium Ion
Backlighting	RGB (South-facing, 7 modes, 16 million colors)
Compatible OS	Windows, macOS, iOS, Android
Product Dimensions	13.62 x 5.94 x 1.73 inches (34.6 x 15.1 x 4.4 cm)
Item Weight	4.31 pounds (1.95 kg)
Material	Acrylonitrile Butadiene Styrene (ABS)

## 8. WARRANTY AND SUPPORT

---

For warranty information and customer support, please refer to the official IQUNIX website or contact their

customer service directly. Keep your purchase receipt as proof of purchase.

You can also find additional resources and a downloadable PDF user manual at:[QUNIX ZX75 User Manual \(PDF\)](#)