

[Manuals.plus](#) /

> [VEVOR](#) /

> VEVOR Drain Cleaning Machine 50 FT x 3/8 Inch User Manual

VEVOR 50 FT x 3/8 Inch Drain Cleaning Machine

VEVOR Drain Cleaning Machine 50 FT x 3/8 Inch User Manual

Model: 50 FT x 3/8 Inch Drain Cleaning Machine

Brand: VEVOR

1. PRODUCT OVERVIEW

The VEVOR Drain Cleaning Machine is a versatile and powerful tool designed for effectively clearing clogs in various drainage systems. Featuring a 50-foot by 3/8-inch steel core cable and an auto-feed system, it is suitable for pipes ranging from 1 inch to 4 inches in diameter. The machine includes multiple interchangeable cutters to tackle different types of blockages and an air-activated foot switch for convenient operation.



Figure 1: VEVOR Drain Cleaning Machine, 50 FT x 3/8 Inch model.

Key Features:

- **Versatile Application:** Equipped with 4 interchangeable cutters (arrow, spade, c-cutter, boring bulb) for various clogs in pipes, floor drains, sinks, and toilets.
- **Durable Cable:** 50 FT x 3/8 inch steel core cable resists breakage, twisting, and corrosion, suitable for 1-inch to 4-inch pipes.
- **Effortless Operation:** Automatic feed control system and air-activated foot switch allow for easy cable management.
- **Portable Design:** Compact and lightweight with 8-inch shock-absorbing wheels and a retractable handle for easy transport and storage.
- **Enhanced Safety:** Features a high-quality 1800RPM motor, semi-enclosed drum for cable observation, and an integrated GFCI for electric shock protection.

2. SETUP INSTRUCTIONS

Before operating the VEVOR Drain Cleaning Machine, ensure all components are properly assembled and secured. Refer to the following steps and the accompanying video for a visual guide.

2.1 Unboxing and Initial Assembly

Upon unboxing, you will need to attach the wheels and the handle bar. This process is straightforward and ensures the machine is mobile and ready for use.

Video 1: Detailed guide on how to install the VEVOR Drain Cleaner Machine, including wheel and handle assembly.

2.2 Attaching Cutters

The machine comes with various cutters designed for different types of blockages. Select the appropriate cutter for your task and securely attach it to the end of the cable.

4 Shapes of Cutters

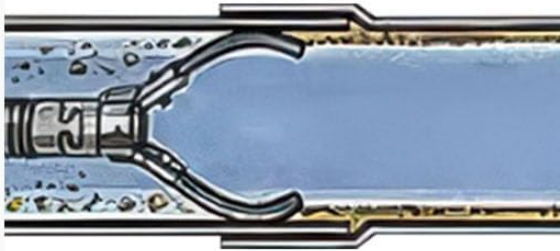
Blast through Any Stubborn Clogs

01



Arrow Cutter

Used for cutting and scraping

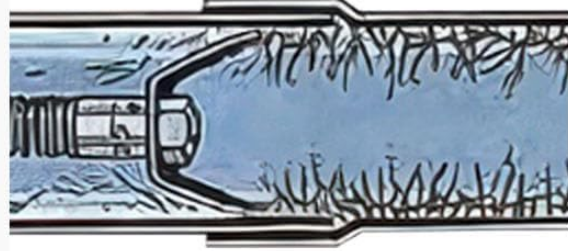


02



C-Cutter

Used for grease stoppages and cleaning pipe walls



03



Boring Bulb Cutter

Used for removing loose objects



04



Spade Cutter

Used for scraping the inside edges of pipes

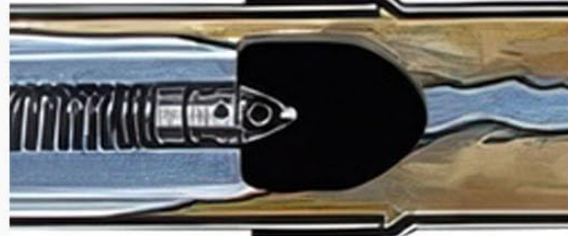


Figure 2: The four interchangeable cutters included with the drain cleaning machine.

- **Arrow Cutter:** Used for cutting and scraping.
- **C-Cutter:** Used for grease stoppages and cleaning pipe walls.
- **Boring Bulb Cutter:** Used for removing loose objects.
- **Spade Cutter:** Used for scraping the inside edges of pipes.

3. OPERATING INSTRUCTIONS

Follow these steps for safe and effective operation of your VEVOR Drain Cleaning Machine.

3.1 Powering On and Safety Check

1. Plug the machine into a grounded outlet. Ensure the GFCI (Ground Fault Circuit Interrupter) is reset and the indicator light is on.
2. Turn the motor switch to the desired direction (FORWARD for feeding, REVERSE for retracting).
3. Check the overload protector to ensure it is in the closed status.
4. Verify the retractor knob is tight.
5. Ensure the air-activated foot switch is functioning correctly by stepping on it to confirm motor activation.

Easy ON/OFF Control of the Motor



Figure 3: The air-activated foot switch provides easy ON/OFF control of the motor.

3.2 Feeding and Retracting the Cable

The auto-feed system simplifies the process of navigating the cable through pipes.

Video 2: Demonstrates how to use the VEVOR Drain Cleaner Machine, focusing on cable feeding and retraction.

- Insert the chosen cutter and cable into the drain opening.
- Step on the foot switch to activate the motor.
- Use the telescope operating lever to control the cable's movement. Push the lever forward to extend the cable

(F-stop Extension spring) and pull it back to retract (R-speed Recovery spring).

- Apply gentle pressure to guide the cable through the pipe, allowing the machine to do the work.
- Once the clog is cleared, switch the motor to REVERSE and retract the cable slowly.

Video 3: Additional instructions on operating the VEVOR Drain Cleaner Machine, showing practical application.

4. MAINTENANCE

Regular maintenance ensures the longevity and optimal performance of your drain cleaning machine.

4.1 Cable Care and Storage

After each use, clean the cable thoroughly to remove any debris and prevent corrosion. Store the cable properly within the drum.

Video 4: Guide on how to solve cable tangles by dismantling the machine for proper maintenance.

Video 5: Instructions on how to quickly solve cable tangles during operation or maintenance.

- Always wear protective gloves when handling the cable.
- If the cable becomes twisted or kinked, manually untie the knot and reload the drum to restore it to a straight state.
- Do not overstress the cable by extending it too far or forcing it when blocked, as this can cause damage.

5. TROUBLESHOOTING

Here are solutions to common issues you might encounter:

5.1 Air-Activated Foot Switch Malfunction

If the air bag of the foot switch is not fully inflated, it may not activate the motor correctly.

Video 6: Troubleshooting guide for when the air bag of the foot switch is not full.

- Unscrew the nut and unplug the air tube from the machine.
- The air bag should automatically return to full capacity.
- Replace the air hose and nut, then depress the air bag to see if the unit resumes operation.

6. SPECIFICATIONS

Feature	Specification
Manufacturer	VEVOR
Part Number	50 FT X 3/8 Inch Drain Cleaner Machine
Item Weight	77 pounds
Product Dimensions	22.8 x 18.7 x 36.2 inches

Feature	Specification
Item Model Number	50 FT x 3/8 Inch Drain Cleaning Machine
Color	Orange, Black
Style	50Ft x 3/8Inch
Voltage	220
Wattage	220
Item Package Quantity	1
Sound Level	1 Decibels
Included Components	1 x Handle, 1 x Tool Box, 1 x Wheel Shaft, 2 x Black Plastic Knob, 2 x Gasket, 2 x Cross Half Round Head Screw, 2 x U-shaped Buckle, 2 x M10 Cover Nut, 4 x Cutter, 2 x Wheel
Batteries Included?	No
Batteries Required?	No



No-Load Speed: **1800 RPM**

Tensile Test: **154 lbs / 70 KG**

Wheel Size: **8 inches**

Length: **50 ft**

Diameter: **3/8 inch**

Cable Type: **Solid Core Steel Cable**

Net Weight: **71.0 lbs / 32.2 kg**

Product Dimensions: **18.7 x 22.8 x 36.2 inches / 475 x 580 x 920 mm**

Package Contents:

Handrail x1 Tool Box x1 Connectors x4 Wheels x2 Axle x1

Black Plastic Knobs x2 U-Clips x2 M10 Cap Nuts x2 Washers x2

Cross Half-Round Head M3*30mm Screws x2 M3 Nuts x2

Figure 4: Product dimensions and included components.

7. WARRANTY AND SUPPORT

For warranty information and customer support, please refer to the documentation included with your product or visit the official VEVOR website. Keep your purchase receipt for any warranty claims.

