

## STRICH SMH-08A

# STRICH Guitar Wall Mount Hangers SMH-08A Instruction Manual

Model: SMH-08A | Brand: STRICH

## INTRODUCTION

This manual provides instructions for the proper installation, operation, and maintenance of your STRICH SMH-08A Guitar Wall Mount Hangers. Please read this manual thoroughly before installation and retain it for future reference.

## PRODUCT OVERVIEW

The STRICH SMH-08A is a modular wall-mount system designed to securely display multiple string instruments. It features a durable aluminum rail and adjustable steel hangers with protective rubber covers.

### Key Features:

- **Modular Design:** Allows for flexible arrangement and expansion of hangers.
- **High Capacity:** Holds up to 8 guitars or other string instruments.
- **Secure & Stable:** Constructed from high-quality aluminum alloy rails and sturdy steel hangers with fixed clips.
- **Instrument Protection:** Soft rubber covers and removable rubber rings on hangers prevent scratches and damage.
- **Space-Saving:** Wall-mounted design optimizes floor space.
- **Adjustable Hangers:** Hangers can rotate 360° to accommodate various instrument neck shapes.

## PACKAGE CONTENTS

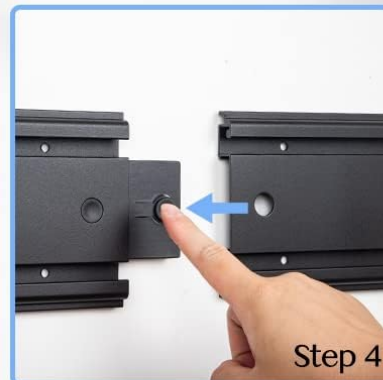
Verify that all components are present before beginning installation:

- Slatwall Rail sections (multi-part splice design)
- 8 Adjustable Hangers

- Endcaps
- Fixed-Clips
- Screws
- Drywall Anchors

## STEPS OF INSTALLATION

Use our customer service to solve any installation problems



**NOTE:** If you are installing on a concrete wall, we recommend adding a solid wood panel to the bottom of the slide for extra strength.

*Image: All components included in the STRICH SMH-08A package.*

### SPECIFICATIONS

<b>Model Number</b>	SMH-08A
<b>Brand</b>	STRICH

<b>Material</b>	Aluminum Alloy (Rails), Steel (Hangers), Rubber (Protective Covers)
<b>Color</b>	Aluminum Painted Black
<b>Overall Width</b>	80.5 inches
<b>Number of Hangers</b>	8
<b>Maximum Weight Capacity</b>	115 Pounds (52.16 kg)
<b>Mounting Type</b>	Wall Mount



Image: Product dimensions and component sizes.

### SAFETY INFORMATION

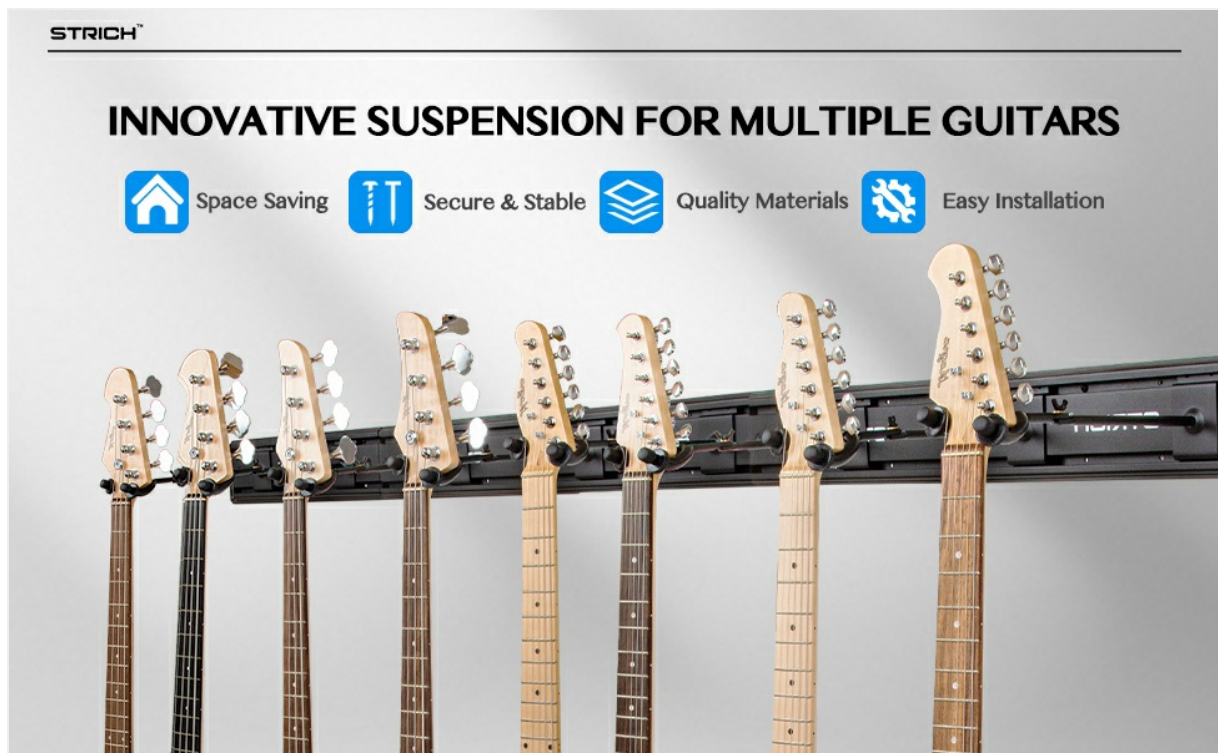
- Ensure the mounting surface is structurally sound and capable of supporting the weight of the rack and all instruments.
- Use appropriate tools and safety gear during installation.
- Do not exceed the maximum weight capacity of 115 pounds.
- Drill holes accurately to prevent loosening of the wall rack. For drywall, use the provided 6mm (1/4") drill bit.
- If installing on concrete walls, it is recommended to add a solid wood panel as a base for extra strength.
- Ensure all screws are fully tightened to prevent dislodgement.

## SETUP & INSTALLATION

Follow these steps carefully for secure installation:

### Step 1: Assemble the Slatwall Rail Sections

Connect the multi-part rail sections using the included accessories. Press the round buckle to securely assemble each slide rail segment.



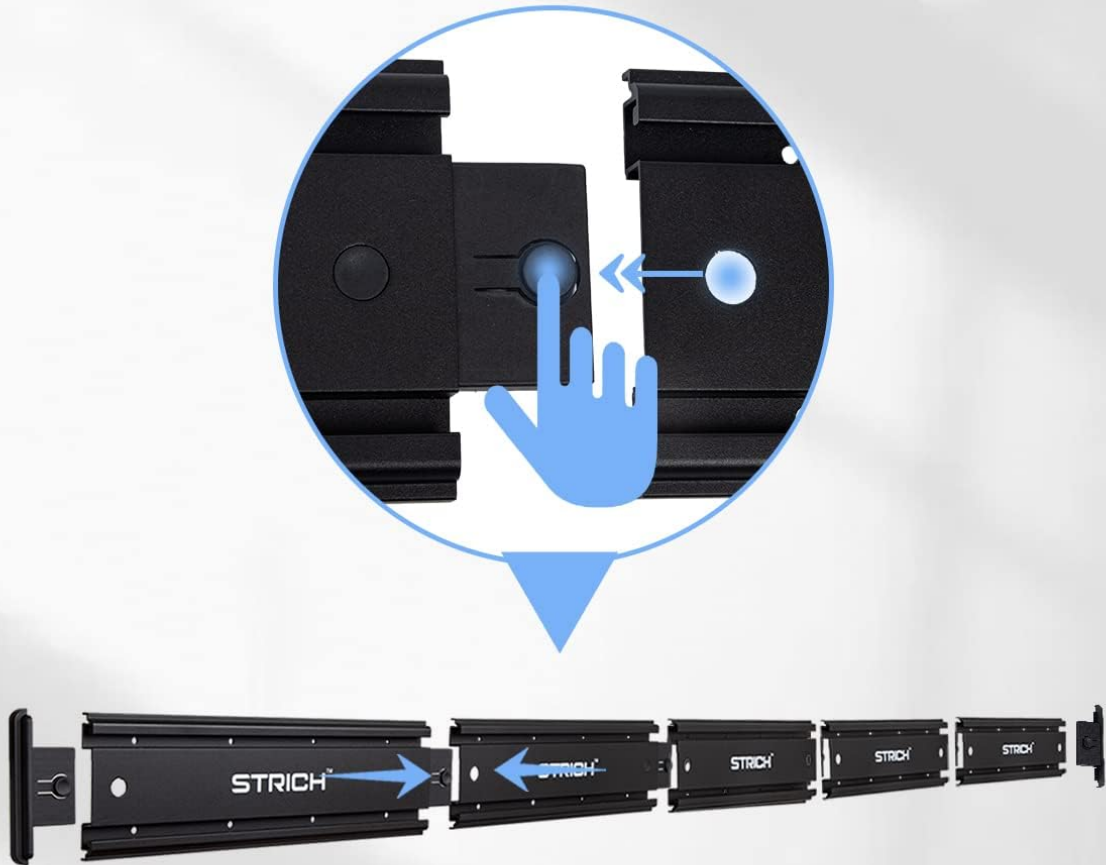
*Image: Assembling the modular slide rails.*

### Step 2: Mark Drilling Locations

Hold the assembled rail against the wall at the desired height. Use a pencil to mark the locations of the pre-drilled holes on the wall. Ensure the rail is level.

# MODULAR SLIDE RAILS

Innovative slide rail design save space



**NOTE:** Please press the round buckle to assemble the slide rail.

*Image: Marking the pre-drilled holes on the wall.*

## Step 3: Drill Holes and Insert Anchors

Using a drill with a 6mm (1/4") drill bit, carefully drill holes at the marked locations. For drywall, insert the provided drywall anchors into the drilled holes. Tap them gently with a hammer if needed, then screw them in until flush with the wall.

# SECURE & STABLE ALUMINIUM HANGER LOCK



Image: Drilling holes for installation.



## MORE STABLE MORE SECURE

Updated Accessories-Fixed Clips

*Image: Inserting a drywall anchor.*

**Important Note:** Drilling too large may cause the wall rack to loosen. If installing on concrete, consider adding a wood strip behind the rail for a more secure base.

### Step 4: Mount the Rail

Align the rail with the installed anchors and secure it to the wall using the provided screws. Ensure all screws are fully tightened. All pre-drilled holes must be screwed in; otherwise, the rack may not support the desired capacity and could dislodge.

# PERFECTLY MATCH VARIOUS GUITARS

The 360° adjustable wall hanger to fit different neck shapes



Electric  
Guitar

Ukulele

Mandolin

Acoustic  
Guitar

Bass



*Image: Securing the rail to the wall.*

## Step 5: Install Hangers and Fixed Clips

Slide the hangers into the rail. Attach the fixed clips to the bottom of each hanger to prevent them from sliding out or detaching when instruments are removed.

## PERFECTLY MATCH **VARIOUS GUITARS**

The 360° adjustable wall hanger to fit different neck shapes



*Image: Installing hangers and fixed clips.*

### Installation Video:

Your browser does not support the video tag.

*Video: Detailed guide on how to install the STRICH Guitar Wall Mount.*

## OPERATING INSTRUCTIONS

### Adjusting Hangers:

The hangers can be rotated 360 degrees to accommodate various headstock shapes and sizes of instruments such as acoustic guitars, electric guitars, bass guitars, ukuleles, violins, banjos, and mandolins. Gently rotate the hanger to the desired angle before placing your instrument.

## MODULAR SLIDE RAILS FOR QUICK ADJUSTMENT

Splicing any length you want, adjust and slide to which angle and where you want



*Image: Adjustable hangers for various instrument types.*

## Placing Instruments:

Carefully place your instrument onto the hanger, ensuring the headstock rests securely within the padded arms. The soft rubber covers are designed to protect your instrument's finish from scratches.



*Image: Guitars displayed on the wall mount.*

Your browser does not support the video tag.

*Video: Demonstration of displaying guitars on the STRICH Wall Mount.*

## MAINTENANCE

- Regularly inspect the wall mount and hangers for any signs of wear, damage, or loosening.
- Ensure all screws remain tight. Re-tighten if necessary.
- Clean the aluminum rails and steel hangers with a soft, dry cloth. Avoid abrasive cleaners.
- Check the rubber covers on the hangers for integrity. Replace if they show signs of significant wear to ensure continued instrument protection.

## TROUBLESHOOTING

## Issue: Rack feels loose after installation.

- **Possible Cause 1:** Drill holes were too large for the anchors.
- **Solution 1:** If possible, use larger anchors suitable for the hole size, or consider patching the holes and re-drilling. For drywall, ensure the 6mm (1/4") drill bit was used.
- **Possible Cause 2:** Screws are not fully tightened.
- **Solution 2:** Ensure all screws are tightened securely into the anchors and the wall.
- **Possible Cause 3:** Wall material is not strong enough.
- **Solution 3:** If the wall is not sturdy (e.g., old plaster, thin drywall), consider mounting the rack onto wall studs or adding a solid wood backing board for reinforcement.

## Issue: Hangers slide out of the rail.

- **Possible Cause:** Fixed clips are not installed or are improperly installed.
- **Solution:** Ensure the fixed clips are correctly attached to the bottom of each hanger, preventing them from detaching from the rail.

## WARRANTY & SUPPORT

STRICH provides a **12-month warranty** from the date of product receipt. We also offer a **30-day free return policy**.

For any questions, concerns, or assistance with installation or product issues, please contact STRICH customer service. We aim to provide a prompt response via email within 24 hours.

**Customer Service:** Refer to your purchase documentation or the STRICH brand store on Amazon for contact details.

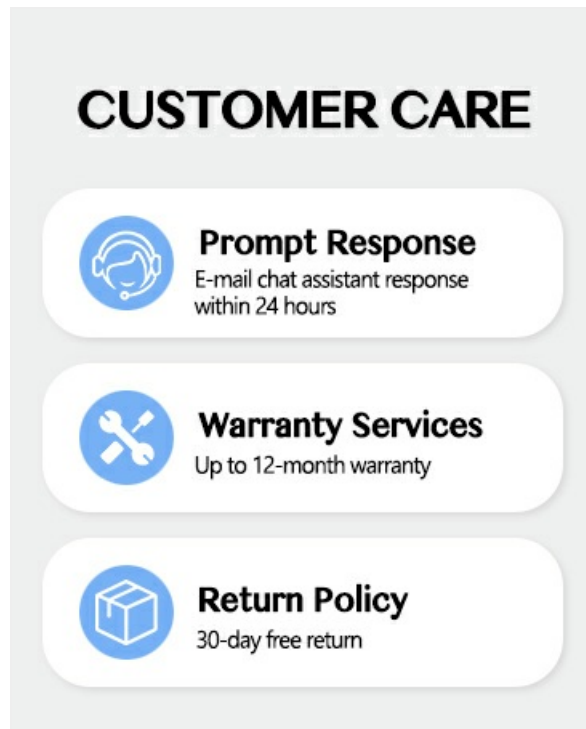


Image: STRICH Customer Care information.

