



[Manuals.plus](#) /

> [Uvision](#) /

> UVISION X1 Native 1080P Wireless Projector User Manual

## Uvision UVS-X1G-WCC

# UVISION X1 Native 1080P Wireless Projector User Manual

Model: UVS-X1G-WCC

## 1. PRODUCT OVERVIEW

---

The UVISION X1 is a compact and portable native 1080P wireless projector designed for versatile use in home, office, and outdoor environments. It features a fully enclosed dustproof system for extended lifespan, dual built-in speakers, and advanced keystone correction for flexible setup.



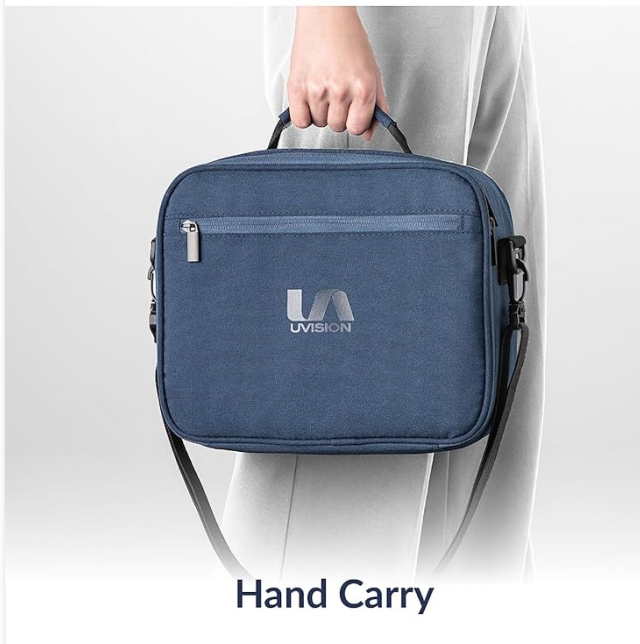
Image 1.1: The UVISION X1 Projector, showcasing its compact design, included carry case, and remote control.

### Key Features:

- **Native 1080P Resolution:** Provides a crisp and detailed high-definition picture (1920 x 1080).
- **Wireless Connectivity:** Supports seamless device integration for hassle-free streaming.
- **Portable Design:** 30% smaller than many other projectors, includes a carry case for easy transport.
- **40° Keystone Correction:** Offers both vertical and horizontal keystone correction for flexible image adjustment.
- **Dual 3W Speakers:** Built-in speakers with 4 modes (home, movie, sport, customize) for immersive audio.
- **Dustproof System:** Fully enclosed design extends the projector's lifetime.
- **Wide Compatibility:** Connects to TV sticks, Roku, laptops, tablets, smartphones, gaming consoles (PS4, PS5, Switch), and more via HDMI, USB, AV, and AUX inputs.

# Go anywhere with it.

30% smaller than  
other projectors.  
A travel friendly  
carry bag included.



**Hand Carry**



**Luggage Hanging**

Image 1.2: The UVISION X1 Projector's compact dimensions and portability, highlighting its travel-friendly carry bag.

## 2. PACKAGE CONTENTS

---

Please check the package contents upon unboxing to ensure all items are present:

- UVISION X1 Projector
- Carry Case
- Power Cable
- HDMI Cable
- USB Cable
- AV Cable
- AUX Cable
- Remote Control

## 3. SETUP GUIDE

---

### 3.1 Placement

Position the projector on a stable, flat surface or mount it to the ceiling. Ensure there is adequate ventilation around the projector. The optimal projection distance ranges from 3.6 ft to 19 ft, supporting screen sizes from 35 inches to 200 inches.

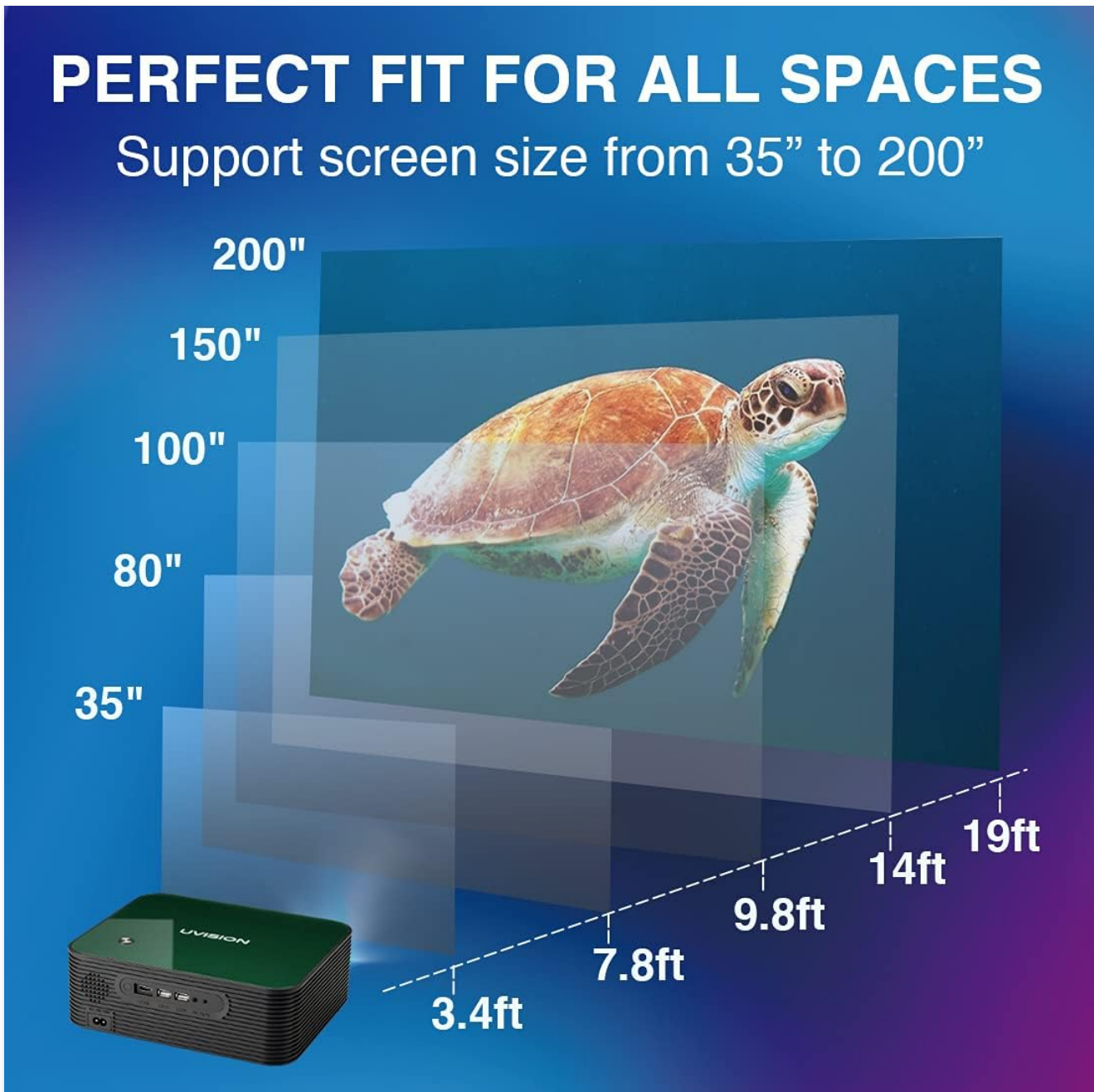


Image 3.1: Guide for optimal screen sizes and corresponding projection distances for the UVISION X1 Projector.

# Setup on the place you wanted



## Stand on end

### Mountable

Screw size: M4\*4

Compatible mount size:

Hole spacing range 12.5 or less

Image 3.2: The UVISION X1 Projector supports various mounting options, including ceiling and table installations.

### 3.2 Power Connection

Connect the provided power cable to the projector's power input and then to a standard electrical outlet.

### 3.3 Initial Power On

Press the power button on the projector or the remote control to turn on the device. Allow a few moments for the projector to initialize.

### 3.4 Focus and Keystone Correction

Adjust the focus ring on the projector lens until the image is clear. Use the keystone correction feature to correct any trapezoidal distortion in the projected image. The UVISION X1 supports 40 degrees of vertical and horizontal keystone correction.

# KEYSTONE CORRECTION

Easy to focus and flexible in every place



Vertical  $\pm 40^\circ$



Horizontal  $\pm 40^\circ$

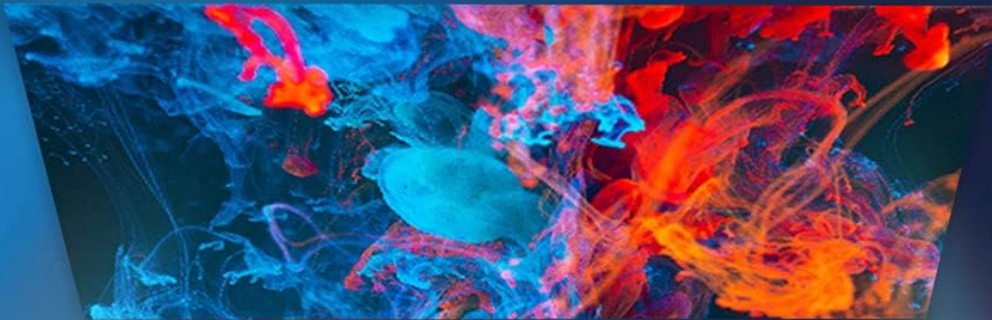


Image 3.3: Demonstration of the UVISION X1 Projector's 40-degree vertical and horizontal keystone correction capabilities.

## 4. OPERATING INSTRUCTIONS

---

### 4.1 Input Source Selection

Use the 'Source' button on the remote control or projector to select your desired input: HDMI, USB, AV, or AUX.

### 4.2 Wireless Mirroring Connection

The UVISION X1 supports wireless mirroring for seamless connectivity with various devices. Follow the on-screen instructions to connect your smartphone, tablet, or laptop wirelessly.

# WIRELESS MIRRORING CONNECTION

Trouble-free wireless connectivity



Image 4.1: The UVISION X1 Projector's wireless mirroring feature, allowing connection with iOS, Mac OS, Android, and Windows devices.

## 4.3 Compatible Devices

The projector is compatible with a wide range of devices, including:

- Fire TV stick, Roku streaming stick
- Laptops, Tablets, Smartphones, Chromebooks
- TV boxes
- Gaming Consoles: PS4, PS5, Switch
- USB drives, DVD players

# 10+ DEVICES CONNECTION

All you need is UVISION X1



Image 4.2: A comprehensive chart illustrating the wide range of devices compatible with the UVISION X1 Projector.

## 4.4 Audio Settings

The built-in dual 3W speakers offer four distinct audio modes: Home, Movie, Sport, and a customizable mode. Navigate to the audio settings in the projector's menu to select your preferred sound profile.

## 4.5 Remote Control Usage

The included remote control provides full functionality for navigating menus, adjusting volume, changing input sources, and powering the projector on/off. Ensure the remote has working batteries and is pointed towards the projector's IR receiver.

## 5. MAINTENANCE

### 5.1 Dust Prevention

The UVISION X1 features a fully enclosed dustproof system designed to minimize dust accumulation and extend the projector's lifespan. Regular cleaning of the exterior is still recommended.

## 5.2 Lamp Life

The LED lamp in the UVISION X1 is designed for longevity, offering an impressive 30,000 hours of lamp life. This translates to over 15 years of use if operated for 5 hours daily.

## 5.3 Cleaning

- **Lens:** Use a soft, lint-free cloth specifically designed for optical lenses. Gently wipe the lens to remove dust or smudges. Avoid abrasive materials or harsh chemicals.
- **Exterior:** Wipe the projector's exterior with a soft, dry cloth. For stubborn marks, a slightly damp cloth can be used, followed by a dry wipe.
- **Ventilation:** Ensure the ventilation openings are clear of obstructions to prevent overheating.

## 6. TROUBLESHOOTING

---

If you encounter issues with your UVISION X1 Projector, please refer to the following common troubleshooting tips:

### 6.1 No Image or Blurry Image

- Ensure the power cable is securely connected and the projector is turned on.
- Check the input source selection to ensure it matches your connected device.
- Adjust the focus ring on the lens until the image is sharp.
- Use the keystone correction feature to correct any distorted image shape.
- Verify that the projection distance is within the recommended range (3.6 ft to 19 ft).

### 6.2 No Sound

- Check the volume level on both the projector and the connected device.
- Ensure the audio cables (if using AV/AUX) are correctly connected.
- If using HDMI, verify that the audio output settings on your source device are configured correctly.
- Test different audio modes in the projector's settings.

### 6.3 Connection Issues (Wireless/Wired)

- For wireless mirroring, ensure your device and the projector are on the same Wi-Fi network.
- Restart both the projector and the source device.
- Try a different HDMI or USB cable if you suspect a faulty cable.
- Ensure the correct input source is selected on the projector.

## 7. SPECIFICATIONS

---

Feature	Specification
Brand	Uvision
Model Name	UVISION X1
Model Number	UVS-X1G-WCC
Native Resolution	1920 x 1080 Pixels (1080P)
Brightness	3,600 LUX

Image Contrast Ratio	5000:1
Aspect Ratio	16:9
Display Technology	LCD
Standing Screen Display Size	35" - 200"
Keystone Correction	Vertical & Horizontal $\pm 40^\circ$
Lamp Life	30,000 hours (LED Lamp)
Speakers	Built-in Dual 3W Speakers
Hardware Interface	HDMI, USB
Connector Type	Wireless, HDMI, USB, AV, AUX
Compatible Devices	Fire TV stick, Roku streaming stick, laptop, tablet, smartphone, chromebook, TV box, PS4, PS5, Switch
Product Dimensions	8.71 x 26.59 x 26.59 cm
Item Weight	3.37 kg
Mounting Type	Ceiling mount, Table mount, Table installation

## 8. WARRANTY AND SUPPORT

---

UVISION provides 12 months of maintenance for product defects, backed by professional customer service and technical support. If the product is defective or cannot be used functionally, please do not hesitate to contact our customer service team.

### Contact Information:

For support, please visit the official UVISION website or contact our customer service via:

- **Email:** [support@uvision.com](mailto:support@uvision.com) (Example)
- **Phone:** 1-800-XXX-XXXX (Example)
- **Website:** [www.uvision.com/support](http://www.uvision.com/support) (Example)

*Please note: The email, phone, and website provided are examples. Refer to your product packaging or official UVISION documentation for precise contact details.*