

anysun B0C3D3SXD

Anysun Self-Leveling Sewer Inspection Camera with Locator

Model: B0C3D3SXD | Brand: Anysun

1. INTRODUCTION

This user manual provides comprehensive instructions for the Anysun Self-Leveling Sewer Inspection Camera with Locator. This system is designed for inspecting pipes, sewer lines, drains, ducts, and other hard-to-reach areas. It features a 9-inch HD monitor, a 512Hz self-leveling camera probe with adjustable LED lights, a 150ft/45m durable cable with a meter marker, and DVR functionality for recording inspections.

2. SAFETY INFORMATION

- Always ensure the device is powered off before connecting or disconnecting components.
- Do not immerse the monitor or control unit in water. The camera probe is IP68 waterproof, but other components are not.
- Handle the camera cable with care to prevent kinks or damage.
- Keep the device away from extreme temperatures and direct sunlight.
- Use only the provided charger for the battery.
- Do not attempt to disassemble or repair the unit yourself. Contact customer support for assistance.

3. PACKAGE CONTENTS

The Anysun Self-Leveling Sewer Inspection Camera system includes the following components:

- 9-inch HD Monitor with DVR Functionality
- 512Hz Self-Leveling Camera Probe
- 150ft/45m Fiberglass Push Cable with Meter Marker
- 512Hz Locator Receiver

- Battery Control Box (4500mAh rechargeable battery)
- Power Adapter/Charger
- 32GB SD Card (pre-installed or included)
- Camera Protective Covers/Centering Skids (various sizes)
- Connection Cables
- User Manual

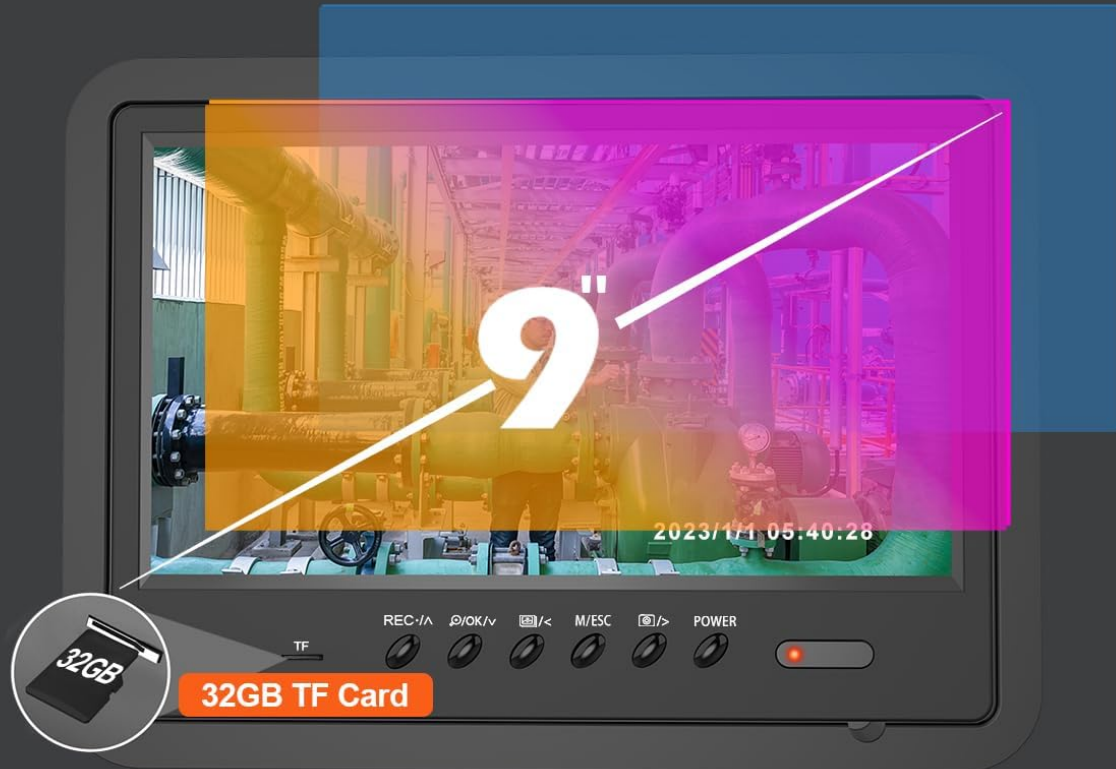
4. PRODUCT OVERVIEW



Figure 1: Complete Anysun Sewer Camera System with Locator. This image displays the main components including the monitor, cable reel, camera probe, and locator receiver.

One-click Video Recording

Easy to save, transfer to other devices for viewing



Vs



9"inch



Full view



DVR Recorder



Take picture

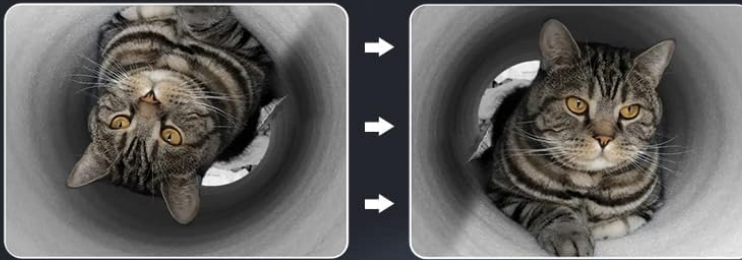
Figure 2: The 9-inch HD monitor with DVR recording capabilities. The monitor allows for clear viewing of the inspection area and features buttons for recording video and taking photos, which are saved to the included 32GB SD card.

Self-leveling & Adjustable LEDs

Allows the screen can always be kept upright,
making observation easier



Automated, No manual operation!



12 Pcs Adjustable LED lights

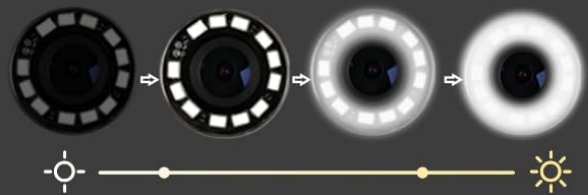


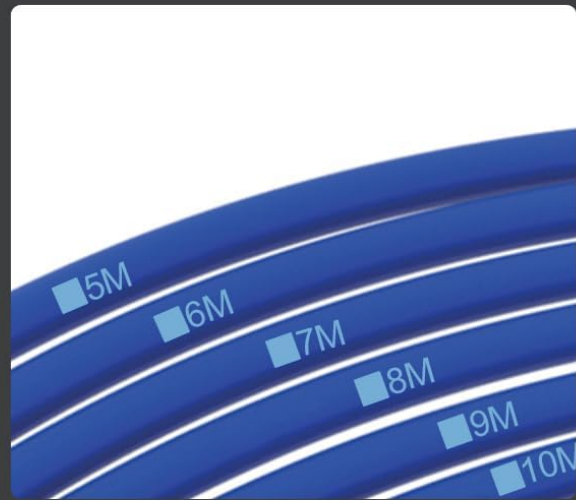
Figure 3: The IP68 waterproof camera probe with self-leveling function and 12 adjustable LED lights. The self-leveling feature ensures the image remains upright, while adjustable LEDs provide optimal illumination in dark environments.

7mm Cable with Meter Marker

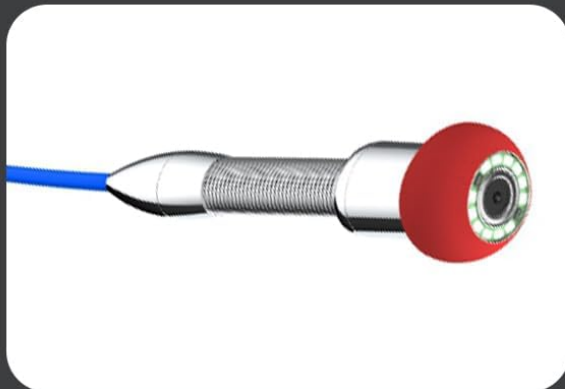
Markings are engraved every meter, which can be used as a counting function



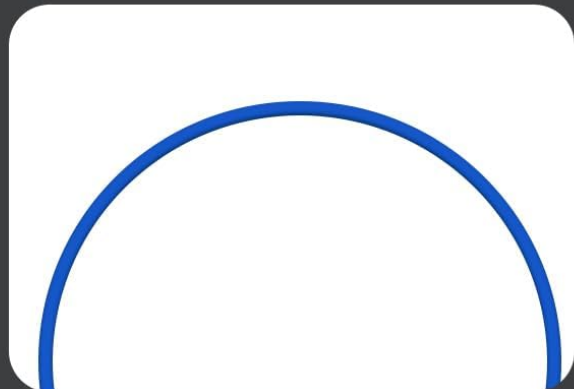
7mm Thickened Cable



With Meter Marker



it better prop up
camera move in the pile



improved material makes
it less prone to breakage

Figure 4: The 7mm diameter fiberglass push cable, thicker for enhanced durability and flexibility. It features meter markings to accurately measure the distance the camera has traveled into the pipe.

Sewer Camera with Locator

Built-in 512hz transmitter makes it easy to locate the camera using the receiver



Figure 5: The 512Hz locator receiver being used to pinpoint the camera's location. The camera probe emits a 512Hz signal, allowing the receiver to accurately detect its position and depth.

4500mAh Rechargeable Battery

Full charge lasts for 8 hours of work



12V
Power supply

8-10H
Working time



Figure 6: The 4500mAh rechargeable battery control box. This unit provides power to the system and offers 8-10 hours of continuous operation on a full charge.

5. SETUP INSTRUCTIONS

1. **Unpack Components:** Carefully remove all items from the carrying case.
2. **Charge Battery:** Connect the power adapter to the battery control box and a power outlet. Ensure the battery is fully charged before first use (8-10 hours operating time).
3. **Connect Camera Probe:** Securely attach the camera probe to the end of the fiberglass push cable. Ensure a tight connection to maintain waterproofing.
4. **Attach Centering Skid (Optional):** Depending on the pipe diameter, select an appropriate centering

skid and attach it to the camera probe. This helps keep the camera centered in larger pipes for a better view.

5. **Connect Monitor:** Plug the camera cable connector from the reel into the designated input port on the 9-inch HD monitor.
6. **Power On:** Turn on the power switch on the monitor unit. The screen should display the camera feed.
7. **Prepare Locator:** Ensure the 512Hz locator receiver has fresh batteries (if applicable) and is powered on.

Your browser does not support the video tag.

Video 1: ESANHAO Sewer Camera Inspection Camera. This video provides a general overview of the sewer camera system and its components, demonstrating basic setup and functionality.

6. OPERATING INSTRUCTIONS

6.1 Camera Operation

1. **Power On:** Press the 'ON/OFF' button on the monitor to power on the system.
2. **Adjust LED Lights:** Use the 'LED +/-' buttons on the monitor to adjust the brightness of the 12 LED lights on the camera probe. Increase brightness for darker pipes and decrease for reflective surfaces.
3. **Push Cable:** Carefully feed the camera probe and cable into the pipe. Use the meter markings on the cable to track the depth.
4. **Self-Leveling:** The camera probe features an automatic self-balancing gravity bearing, ensuring the image on the monitor remains upright regardless of the camera's orientation in the pipe.
5. **Recording Video:** Press the 'REC' button to start recording video. Press again to stop. Videos are saved to the SD card.
6. **Taking Photos:** Press the 'PHOTO' button to capture still images. Photos are saved to the SD card.
7. **Playback:** Use the 'PLAY' button to review recorded videos and photos from the SD card.

Your browser does not support the video tag.

Video 2: Sewer Camera with Locator. This video demonstrates the camera's functionality, including insertion into a pipe and viewing the live feed on the monitor.

6.2 Using the 512Hz Locator

The camera probe has a built-in 512Hz transmitter, allowing you to accurately locate its position within the pipe using the handheld locator receiver.

1. **Activate Transmitter:** The 512Hz transmitter in the camera probe activates automatically when the camera system is powered on.
2. **Power On Locator:** Turn on the handheld 512Hz locator receiver.
3. **Select Mode:** The locator typically has 'Far' and 'Near' modes. 'Far' mode detects signals up to 23ft, and 'Near' mode detects up to 13ft. Start with 'Far' mode for initial detection.
4. **Adjust Sensitivity:** Adjust the sensitivity knob on the locator to get a clear signal. A higher sensitivity setting will detect the signal from further away.
5. **Locate Signal:** Move the locator receiver along the ground above the pipe. The signal strength indicator (visual and/or audio) will increase as you get closer to the camera probe.
6. **Pinpoint Location:** Once a strong signal is detected, switch to 'Near' mode and fine-tune the sensitivity

to pinpoint the exact location and depth of the camera probe. The antenna on the locator should be parallel to the ground for best results.

Your browser does not support the video tag.

Video 3: Clear Operation Guide of Locator. This video provides a detailed demonstration of how to use the 512Hz locator to find the camera probe within a pipe.

Your browser does not support the video tag.

Video 4: Sewer Camera with Locator, Distance Counter, Self-Leveling. This video highlights the key features of the system, including the locator, distance counter, and self-leveling camera.

7. MAINTENANCE

- **Cleaning:** After each use, clean the camera probe and cable with a damp cloth. Avoid harsh chemicals that could damage the materials.
- **Storage:** Store the system in its original carrying case in a cool, dry place away from direct sunlight.
- **Battery Care:** Recharge the battery regularly, even if not in use, to maintain its lifespan. Do not overcharge or completely drain the battery.
- **Cable Inspection:** Periodically inspect the cable for any signs of wear, cuts, or damage. Replace if necessary.

8. TROUBLESHOOTING

Problem	Possible Cause	Solution
No image on monitor	Loose cable connection, low battery, camera not powered on.	Check all cable connections, ensure battery is charged, power on the monitor.
Image is dark/unclear	Insufficient LED brightness, dirty camera lens.	Adjust LED brightness using 'LED +/-' buttons, clean camera lens.
Locator not detecting signal	Camera transmitter off, locator in wrong mode, low locator battery, too far from camera.	Ensure camera system is on, select correct locator mode ('Far'/'Near'), check locator battery, move closer to the pipe.
Cannot record video/photos	SD card full, SD card not inserted correctly, SD card corrupted.	Check SD card storage, reinsert SD card, format or replace SD card.

9. SPECIFICATIONS



- **Monitor Size:** 9 inches
- **Video Capture Resolution:** 1080p
- **Cable Length:** 150ft/45m
- **Cable Diameter:** 7mm
- **Camera Features:** Self-leveling, 512Hz transmitter, 12 adjustable LED lights, IP68 waterproof
- **Battery Capacity:** 4500mAh Lithium Ion (included)

- **Operating Time:** 8-10 hours (on full charge)
- **Storage:** 32GB SD Card (included)
- **Product Dimensions:** 19.5 x 17.5 x 11.5 inches
- **Item Weight:** 2.2 pounds
- **Manufacturer:** anysun
- **ASIN:** B0C3D3SXD N

10. WARRANTY AND SUPPORT

The Anysun Self-Leveling Sewer Inspection Camera with Locator comes with a**1-year service warranty**. If you encounter any problems or require assistance with your product, please contact Anysun customer support. Refer to the contact information provided in your product packaging or on the official Anysun website for support details.

Related Documents - B0C3D3SXD N

	<p>ANYSUN Sewer Inspection Camera User Manual</p> <p>Comprehensive user manual for the ANYSUN Sewer Inspection Camera, detailing operation, charging, recording, troubleshooting, and after-sales support for pipe inspection tasks.</p>
	<p>Blumaple Industrial Catalog 2025: Premium Electronics, Office IT Hardware, Corporate Gifting</p> <p>Discover the Blumaple 2025 Industrial Catalog, featuring a comprehensive selection of premium electronics, office IT hardware, and corporate gifting solutions. Browse endoscopes, thermal cameras, gas leak detectors, microscopes, barcode scanners, and industrial binoculars.</p>