

VSDISPLAY K003212

VSDISPLAY 12.6 Inch IPS LCD Screen Monitor Instruction Manual

Model: K003212

1. INTRODUCTION AND OVERVIEW

This manual provides detailed instructions for the installation, operation, and maintenance of your VSDISPLAY 12.6 Inch IPS LCD Screen Monitor. Designed for versatility, this 1920x515 resolution display is particularly suited for DIY projects, such as integration into PC cases like the Y60, serving as a secondary monitor for CPU/GPU monitoring or other informational displays.



Figure 1.1: VSDISPLAY 12.6 Inch IPS LCD Screen Monitor.



Figure 1.2: Examples of the VSDISPLAY monitor integrated into different PC case setups, showcasing its versatility as a secondary display for system monitoring or aesthetic enhancement.

2. PRODUCT FEATURES

- **High Resolution Display:** 12.6 inch IPS LCD monitor with a resolution of 1920x515 pixels.
- **Vivid Imagery:** Screen brightness of 400cd/m2 and a contrast ratio of 1200:1 (Typ.) for clear and vibrant images.
- **Wide Viewing Angle:** IPS panel technology provides a full 178° viewing angle, ensuring consistent display clarity from various perspectives.
- **DIY Kit:** Comes as a complete kit, including the LCD controller board, power cable, and signal cable, facilitating direct installation.
- **Optimized for PC Cases:** Designed for convenient installation, particularly suitable for integration into PC cases like the Y60.

IPS Full Viewing Angle 178°

The IPS screen provides wider viewing angle&superior image color

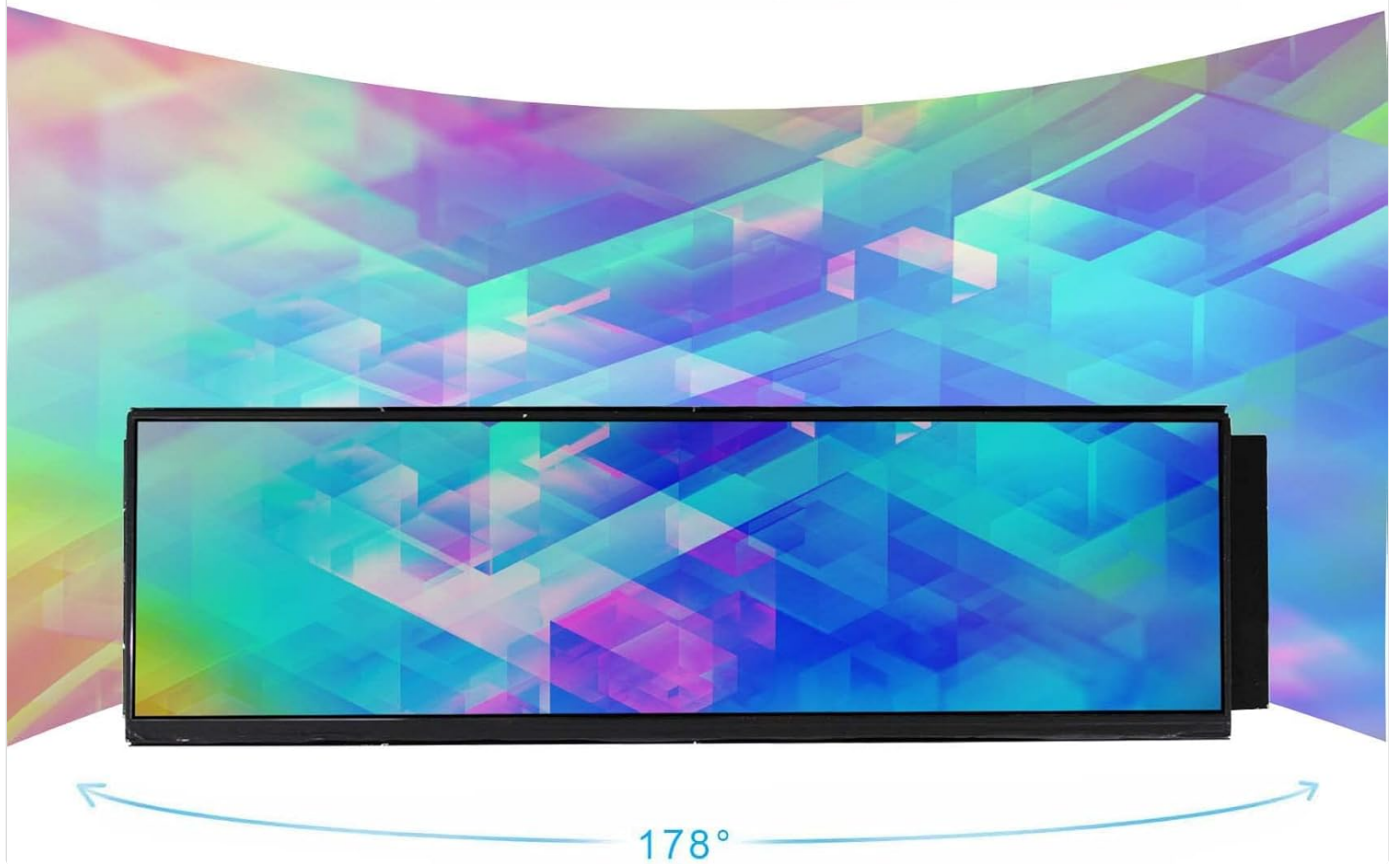


Figure 2.1: Illustration of the 178° IPS full viewing angle, demonstrating consistent image quality from wide perspectives.

3. PACKAGE CONTENTS

Please verify that all items listed below are present in your package:

- 1 × 12.6 inch 1920x515 LCD Kit (Includes LCD Controller Board)
- 1 × 4-Pin Power Cable (Red: 12Vdc, Black: GND)
- 1 × Signal Cable (HDMI)



Shipping list



Figure 3.1: The included 4-pin power cable and HDMI signal cable.



Figure 3.2: The LCD Controller Board, a key component of the kit.

4. SETUP AND INSTALLATION

The VSDISPLAY monitor DIY kit is designed for straightforward installation, especially within compatible PC cases. Follow these steps for proper setup:

1. **Prepare your PC Case:** Ensure your PC case, such as the Y60, is ready for monitor integration. This may involve removing side panels or internal components to access the installation area.
2. **Position the Monitor:** Carefully place the 12.6-inch LCD screen into its intended position within the PC case. The kit is designed for direct installation in the corner of the Y60 PC case.
3. **Secure the Monitor:** Use appropriate screws or mounting hardware to firmly secure the monitor in place. Refer to the provided diagrams for typical mounting points.
4. **Connect the Signal Cable:** Connect one end of the provided signal cable (HDMI) to the monitor's input port and the other end to your computer's graphics card (GPU) or motherboard's video output.
5. **Connect the Power Cable:** The monitor can be powered via two options:
 - **DC Connector (3.5mm x 1.35mm):** Use a 5Vdc 2A or 12Vdc 1A power source.
 - **Micro USB:** Use a 5Vdc 500mA power source.

Connect the appropriate power cable to the monitor and a suitable power source. Ensure the red wire of the 4-pin power cable is connected to 12Vdc and the black wire to GND.

6. **Cable Management:** Route all cables neatly to ensure proper airflow and a clean aesthetic within your PC case.

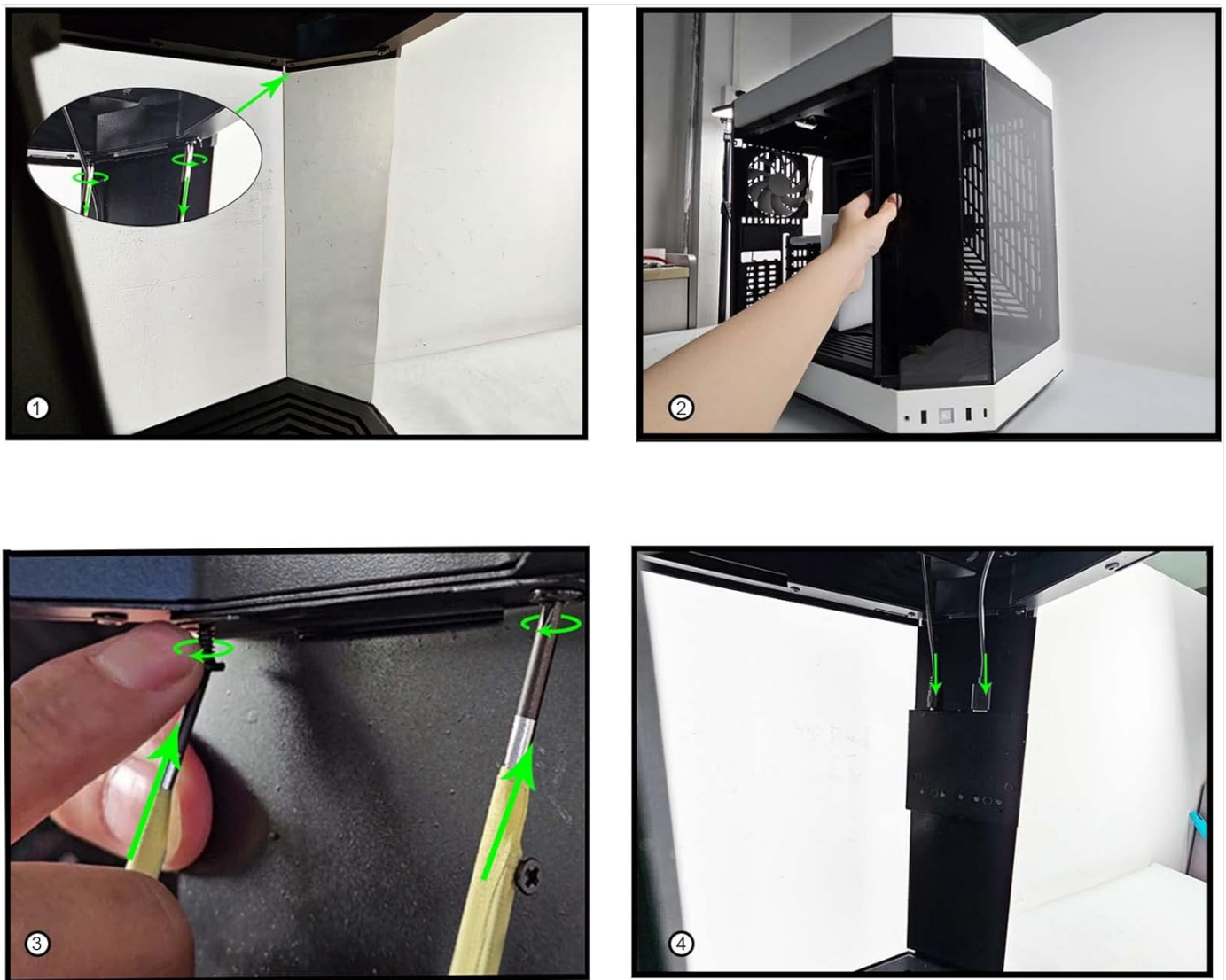


Figure 4.1: Step-by-step guide illustrating the installation process, including securing the monitor with screws.



Figure 4.2: The monitor installed vertically within a PC case, demonstrating a common configuration.

5. OPERATING INSTRUCTIONS

Once installed and powered on, the VSDISPLAY monitor functions as a secondary display for your system. It features control buttons for basic adjustments.

5.1 Control Buttons

The monitor is equipped with several buttons for navigation and settings adjustment:

- **Power:** Turns the monitor on or off.
- **MENU:** Accesses the On-Screen Display (OSD) menu for settings.
- **+:** Navigates up or increases values in the OSD menu.
- **-:** Navigates down or decreases values in the OSD menu.
- **SOURCE:** Switches between available input sources (e.g., HDMI 1, HDMI 2 if applicable).

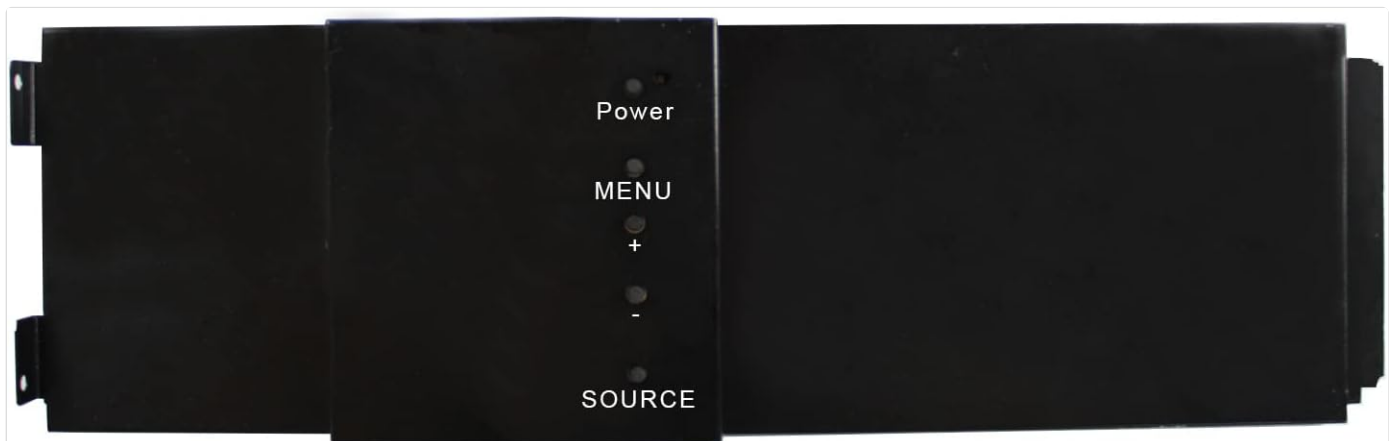


Figure 5.1: Location and labels of the control buttons on the monitor's rear panel.

5.2 Display Modes and Customization

The monitor supports various display configurations, including split-screen functionality, allowing content to be divided into

multiple areas. This adaptability enables both horizontal and vertical screen orientations to suit different installation needs and display requirements.

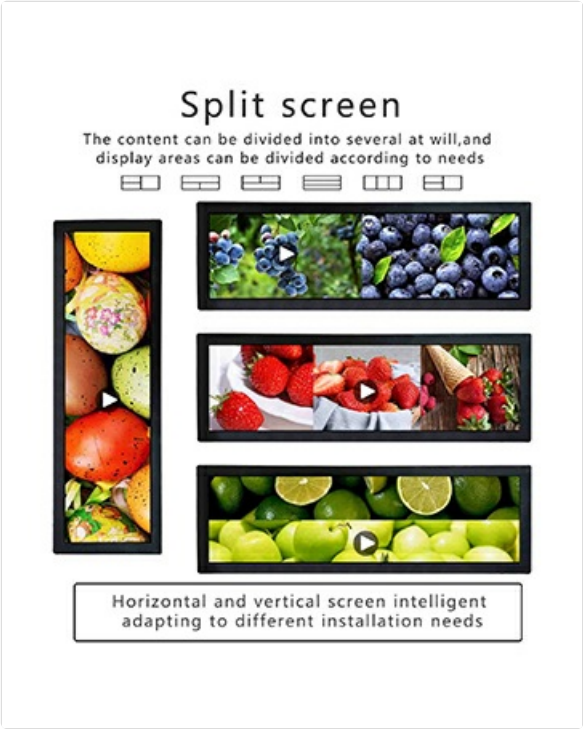


Figure 5.2: Examples of split-screen configurations, demonstrating the monitor's ability to display multiple content areas simultaneously.

6. MAINTENANCE

To ensure the longevity and optimal performance of your VSDISPLAY monitor, follow these maintenance guidelines:

- **Cleaning the Screen:** Use a soft, lint-free cloth slightly dampened with water or a non-abrasive screen cleaner. Avoid harsh chemicals or abrasive materials that could damage the screen surface.
- **Cleaning the Casing:** Wipe the monitor casing with a soft, dry cloth.
- **Ventilation:** Ensure proper airflow around the monitor, especially if installed within a confined PC case, to prevent overheating.
- **Handling:** Handle the monitor carefully to avoid physical damage. Do not apply excessive pressure to the screen.

7. TROUBLESHOOTING

If you encounter issues with your VSDISPLAY monitor, refer to the following common troubleshooting steps:

Problem	Possible Cause	Solution
No display/Black screen	<ul style="list-style-type: none">◦ Power cable not connected or faulty.◦ Signal cable not connected or faulty.◦ Incorrect input source selected.◦ Computer not outputting signal.	<ul style="list-style-type: none">◦ Check power connections and try a different power source/cable.◦ Ensure signal cable is securely connected to both monitor and computer.◦ Use the "SOURCE" button to cycle through inputs.◦ Verify computer's display settings and ensure it's sending a signal.

Problem	Possible Cause	Solution
Flickering or distorted image	<ul style="list-style-type: none">◦ Loose signal cable connection.◦ Interference from other electronics.◦ Incorrect display resolution/refresh rate.	<ul style="list-style-type: none">◦ Reseat the signal cable.◦ Move monitor away from other electronic devices.◦ Adjust display settings on your computer to 1920x515 resolution.
Buttons not responding	<ul style="list-style-type: none">◦ Monitor is off or in standby.◦ Buttons are stuck or damaged.	<ul style="list-style-type: none">◦ Ensure monitor is powered on.◦ Gently press buttons to ensure they are not stuck.

If the problem persists after trying these solutions, please contact VSDISPLAY customer support for further assistance.

8. SPECIFICATIONS

Feature	Detail
Model Number	K003212
Screen Size	12.6 Inches
Resolution	1920x515 Pixels
Panel Type	IPS
Viewing Angle	178° (Full Viewing Angle)
Brightness	400 cd/m²
Contrast Ratio	1200:1 (Typ.)
Screen Surface	Glossy
Power Input (DC Connector)	5Vdc 2A or 12Vdc 1A
Power Input (Micro USB)	5Vdc 500mA
Product Dimensions	0.21 x 12.43 x 3.7 inches
Item Weight	1.3 pounds

9. WARRANTY AND SUPPORT

VSDISPLAY products are designed for reliability and performance. For any product-related inquiries or support, please refer to the following:

- **Warranty Information:** Specific warranty details are typically provided at the point of purchase or on the official VSDISPLAY website. Please retain your proof of purchase for warranty claims.
- **Customer Support:** If you experience any issues with your product, or require technical assistance, please contact

VSDISPLAY customer support. Contact information can usually be found on the seller's page on Amazon or the official VSDISPLAY website.

- **Protection Plans:** Extended protection plans may be available for purchase separately to cover your device beyond the standard warranty period.

For direct contact with the seller, Shenzhen Shi Wei Si Dian Zi You Xian Gong Si, please refer to their seller profile on Amazon.



© 2024 VSDISPLAY. All rights reserved.

For more information, visit the [VSDISPLAY Store on Amazon](#).