

Angrox ND21-J

Angrox Replacement Remote for VIZIO Sound Bar

Model: ND21-J

1. INTRODUCTION

This manual provides comprehensive instructions for the Angrox Replacement Remote, designed specifically for VIZIO Sound Bar systems. This remote offers 100% of the original functionality, ensuring a seamless replacement experience for your home theater audio system.

It is compatible with various VIZIO Sound Bar series, including 2.1 and 5.1 home theater sound bars, VIZIO channel sound bar systems, and VIZIO M/V/P series home audio sound systems.

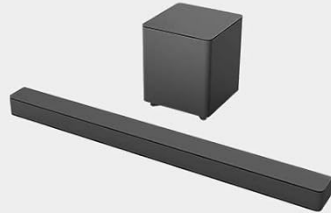




Image: The Angrox Replacement Remote for VIZIO Sound Bar, showcasing its sleek design.

Replacement Remote for Vizio Sound Bar:

Vizio **2.1** home theater sound bar
Vizio **5.1** home theater sound bar
Vizio **channel soundbar** system
Vizio **home theater surround sound** system
Vizio **M/V/P** series home audio sound system



Vizio 2.1 home theater sound bar



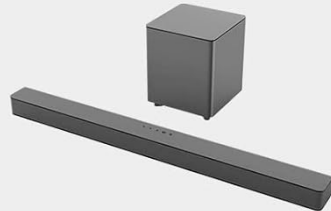
Vizio 5.1 home theater sound bar



Vizio channel soundbar system



Vizio home theater surround sound system



Vizio M/V/P series home audio sound system

Image: Visual guide illustrating the types of VIZIO sound bar systems compatible with this replacement remote, including 2.1, 5.1, channel, and M/V/P series setups.

2. SETUP

2.1 Battery Installation

The remote requires two (2) AAA batteries (not included). Follow these steps to install them:

1. Locate the battery compartment on the back of the remote control.
2. Slide the battery cover downwards to open it.
3. Insert two AAA batteries, ensuring the positive (+) and negative (-) ends align with the markings inside the compartment.
4. Slide the battery cover back into place until it clicks securely.

Requires 2*AAA Batteries

(Batteries are not included)



NEW ABS



Image: Diagram showing the battery compartment and correct insertion of AAA batteries.

2.2 Initial Connection

This replacement remote is designed for immediate use with compatible VIZIO Sound Bar systems. No complex programming or pairing is typically required. Simply insert the batteries, and the remote should automatically connect and function with your sound bar.

Replaced Your **VIZIO** Sound Bar



Image: A hand holding the remote, demonstrating its use with a VIZIO sound bar setup, highlighting its no-programming feature and upgraded smart chip for stable performance.

3. OPERATING INSTRUCTIONS

The Angrox Replacement Remote provides full control over your VIZIO Sound Bar's functions. Below is a detailed guide to each button and general usage tips:

USING THE REMOTE

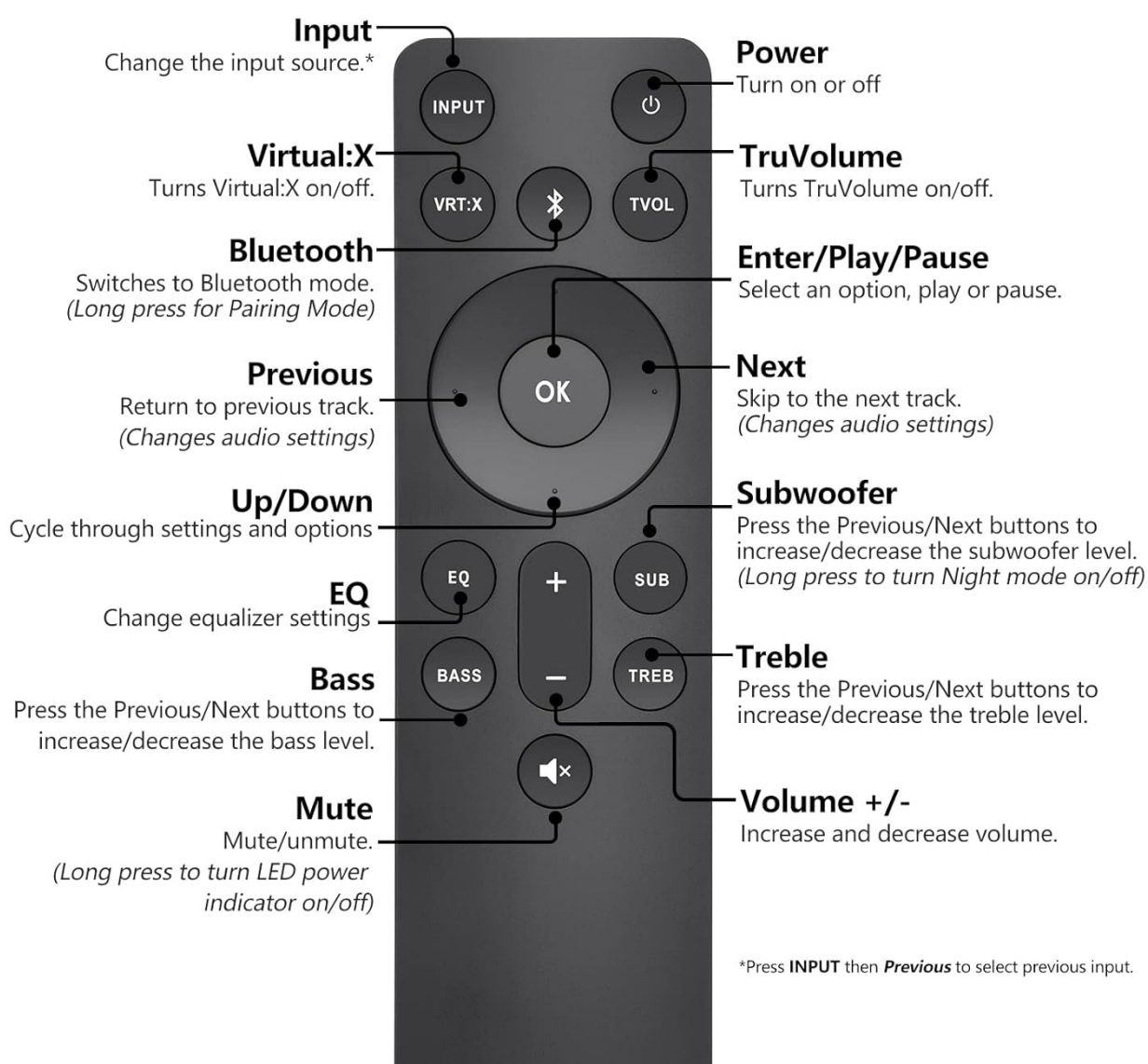


Image: A detailed diagram labeling each button on the remote and describing its specific function, including input, volume, EQ, and more.

Button	Function
Power ()	Turns the sound bar on or off.
INPUT	Changes the input source of the sound bar.
VRT:X	Turns Virtual:X surround sound on or off.
Bluetooth ()	Switches to Bluetooth mode. Long press for Pairing Mode.
TVOL	Turns TruVolume on or off.
OK	Enter/Play/Pause. Select an option, play or pause media.
Navigation Arrows (Up/Down/Left/Right)	Navigate menus, cycle through settings and options.
Previous	Return to previous track. (Changes audio settings)

Button	Function
Next	Skip to the next track. (Changes audio settings)
EQ	Change equalizer settings.
BASS	Press to increase/decrease the bass level.
SUB	Press to increase/decrease the subwoofer level. (Long press to turn Night mode on/off)
TREB	Press to increase/decrease the treble level.
Volume +/-	Increase and decrease volume.
Mute ()	Mute/unmute audio. (Long press to turn LED power indicator on/off)

3.1 Customizing Your Audio Experience

The remote allows you to fine-tune your sound experience. Use the **EQ** button to cycle through preset equalizer modes, and adjust **BASS**, **TREB**, and **SUB** levels to suit your preferences. The comfort grip design ensures ease of use while customizing your audio.

Set the mode to suit your mood.

a fully-featured remote with comfort grip makes it easy to customize your about for the perfect sound experience.

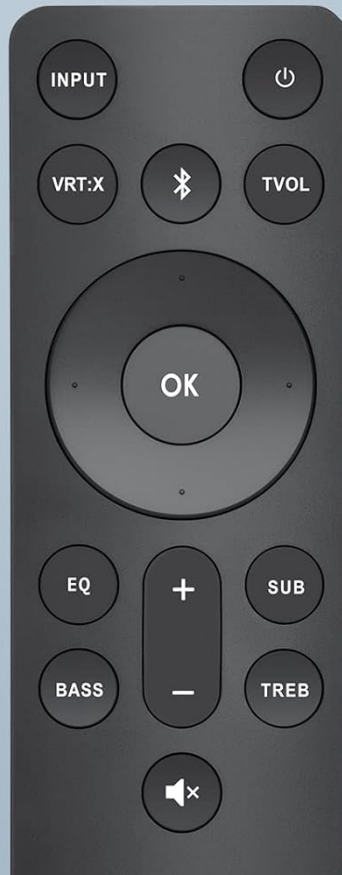


Image: The remote control displayed with the phrase "Set the mode to suit your mood," emphasizing its ability to customize audio for a perfect sound experience.

3.2 Remote Performance and Range

The remote operates using infrared (IR) technology, providing a reliable connection up to 10-12 meters (approximately 33-40 feet) from your sound bar. For optimal performance, ensure a clear line of sight between the remote and the sound bar's IR receiver. The remote boasts a fast response time of 0.5 seconds, ensuring your commands are registered quickly.



Image: Visual representation of the remote's effective operating range, indicating functionality over 40 feet.



Image: An illustration highlighting the remote's quick response time of 0.5 seconds.

3.3 Versatile Usage

The compact and ergonomic design of the remote makes it suitable for use in various environments within your home, providing convenient control from your living room, kitchen, or bedroom.

Cover Your Needs Anywhere

In the living room



In the kitchen



In the bedroom



Image: Collage showing the remote being used in various settings such as a living room, kitchen, and bedroom, demonstrating its versatility.

4. MAINTENANCE

4.1 Battery Replacement

When the remote's response becomes sluggish or it stops functioning, it's time to replace the batteries. Refer to Section 2.1 for battery installation instructions.

4.2 Cleaning

To clean the remote, gently wipe it with a soft, dry cloth. Avoid using liquid cleaners, aerosols, or abrasive materials, as these can damage the remote's surface or internal components.

4.3 Storage and Durability

Store the remote in a cool, dry place away from direct sunlight and extreme temperatures. If the remote will not be used for an extended period, it is recommended to remove the batteries to prevent leakage. The remote is designed

to be sturdy and drop-resistant, ensuring long-term durability.



Image: An illustration highlighting the remote's sturdy and drop-resistant design, showing it can withstand impacts.

5. TROUBLESHOOTING

- **Remote Not Responding:**
 - Ensure batteries are correctly installed and not depleted. Replace if necessary.
 - Check for any obstructions between the remote and the sound bar's IR receiver.
 - Ensure you are within the effective operating range (10-12 meters).
- **Intermittent Functionality:**
 - Verify that the remote is pointed directly at the sound bar.
 - Avoid strong light sources (e.g., direct sunlight, bright fluorescent lights) that might interfere with the IR signal.
- **Specific Buttons Not Working:**
 - Ensure the remote is compatible with your specific VIZIO Sound Bar model. Refer to the compatibility list in Section 1.
 - If only certain buttons are unresponsive, the remote might be damaged.

If you continue to experience issues after following these steps, please contact customer support for further assistance.

6. SPECIFICATIONS

Model Number	ND21-J
Dimensions (L x W x H)	7.91 x 2.8 x 0.94 inches (approx. 20.1 x 7.1 x 2.4 cm)
Item Weight	1.44 ounces (approx. 40.8 grams)
Batteries Required	2 x AAA (not included)
Technology	Infrared (IR)
Operating Range	Up to 10-12 meters (33-40 feet)
Material	ABS

Compatible Devices

VIZIO 2.1/5.1 Home Theater Sound Bar, VIZIO channel sound bar system, VIZIO M/V/P series home audio sound system



5.9 inch





Image: Diagram illustrating the physical dimensions (length, width, thickness) of the remote control.

7. WARRANTY AND SUPPORT

Angrox offers a **30-day warranty return service** for this product. If you encounter any issues or have questions regarding your order, please do not hesitate to contact our customer support team.

We are committed to providing excellent after-sales service and will respond to your inquiries within 12 hours on working days.

For support, please visit the [Angrox Store on Amazon](#) or contact us through the platform where you made your purchase.

© 2025 Angrox. All rights reserved.

This manual is for informational purposes only. Product specifications are subject to change without notice.