

[Manuals.plus](#) /

> [Ymiko](#) /

> Ymiko 7-inch Marine GPS Plotter Fish Finder with Transducer User Manual

Ymiko Ymikovscwqgnz9o

Ymiko 7-inch Marine GPS Plotter Fish Finder with Transducer

Model: Ymikovscwqgnz9o

INTRODUCTION

This manual provides detailed instructions for the installation, operation, and maintenance of your Ymiko 7-inch Marine GPS Plotter Fish Finder. This device combines a GPS plotter with a built-in fish finder, featuring a 7-inch color LCD display (800x600 resolution) and IP66 ingress protection, making it suitable for various marine environments. It offers split-screen functionality, dual-frequency sonar, and compatibility with multiple mapping systems.

PACKAGE CONTENTS

Please verify that all items listed below are included in your package:

- 1 x Marine Plotter (with Base)
- 1 x Bronze Transducer (3 m/9.8 ft wire)
- 1 x Power Cord
- 1 x GPS Antenna (10 m/32.8 ft line)
- 1 x Waterproof Cover
- 1 x Anti-vibration Pad
- 4 x Double-sided Stickers
- 2 x Fuses
- 3 x Long Screws
- 4 x Short Screws
- 1 x User Manual

SETUP

Proper installation is crucial for optimal performance. Ensure the device is mounted securely and all connections are waterproofed.

Mounting the Display Unit

Select a location on your boat that provides clear visibility and easy access to controls, away from direct sunlight if possible. Use the provided base and screws to securely mount the display unit. The unit is designed for marine environments with IP66 protection.



Marine GPS Plotter

7in LCD Display

7in GPS marine plotter (color LCD 800x600), clear display, easy to read



Image: The Ymiko 7-inch Marine GPS Plotter Fish Finder mounted on its base, ready for installation on a boat.

Connecting the Transducer

Install the bronze transducer in a location that provides an unobstructed view of the water beneath your boat. Ensure the transducer cable is routed safely and connected to the appropriate port on the back of the main unit. Secure all connections to prevent water ingress.

Connecting the GPS Antenna

Mount the GPS antenna in a location with a clear view of the sky to ensure optimal satellite reception. Connect the GPS antenna cable to the designated port on the main unit. The 10m (32.8 ft) cable provides flexibility for

placement.

Power Connection

Connect the power cord to a 10.5 to 30VDC power source on your boat. Ensure the connection is secure and protected from moisture. The device draws approximately 1.5A at 12V. Use the provided fuses for circuit protection.



Image: Rear view of the Ymiko 7-inch Marine GPS Plotter Fish Finder, highlighting the GPS antenna, transducer, and power input ports.

OPERATING INSTRUCTIONS

The Ymiko Marine GPS Plotter Fish Finder offers a range of functions for navigation and fish detection. Familiarize yourself with the control buttons and menu structure for efficient use.

Plotter Characteristics

Waypoints/icons	12,000 user waypoints with name, symbol, 3 system waypoints: MOB,Start,cursor 10 proximity waypoints
Routes	30 routes waypoint up to 170 points each, plus MOB and Track Navigation or Goto Track modes
Tracks	8,000 points automatic track log; 10 saved tracks (up to 8000 track points each) lets you retrace your path in both directions
Alarms	XTE, Anchor drag, arrival, speed, voltage, proximity waypoint, Timer and AIS (CPA and TCPA) alarm
Drawing	1000 Drawing Marks; 2000 Drawing Lines (40 points each); 1000 Drawing Place Name; 8 colors for Drawing
Pallete	Normal Daylight exposed to sunlight Night in dark environment NOAA paperchart colors
Tides	Built-in Worldwide Tide Data
Position Format	Lat/Lon
Basemap	Worldwide
External Map	Compatible with K-Chart 2.0, K-Chart 3.0, C-Map Max and Navionics+
User Data Storage	Internal backup of user settings or external SD-card
Plot Interval	5secs to 60 mins or 0.01 to 10nm
Plotting Scales	0.001 to 700nm
Perspective view	On/off (available for C-Map only)
Celestial	Sunrise/Sunset Moonrise/Moonset

GPS Receiver Characteristics

Receiver	50 parallel channel GNSS receiver continuously tracks and uses up to 50 satellites to compute and update your position
Acquisition time	Cold start: 29 seconds Hot start: 1 second
Update rate	1 second or 0.1 second selectable
Accuracy	Position:3 meters(95%) without S/A Velocity: 0.1 meter/sec without S/A
SBAS	Supported
QZSS	Supported
Satellite System	Choice of 4 GNSS: GPS, Beidou, GLONASS and Galileo
Dynamics	Altitude: 18,000 m Velocity: 515 m/s
Datum	WGS 84 & user defined
Antenna	GPS Patch Antenna

Image: Close-up of the control panel, showing 'MENU', 'MODE', 'ESC', 'ENT/A', directional keys, 'MOB', and power buttons.

GPS Plotter Functions

The device features a comprehensive GPS plotter for navigation.

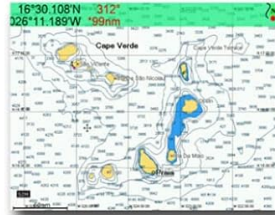
- **Waypoints/Icons:** Store up to 12,000 user waypoints with names and symbols. Includes 10 proximity waypoints and 3 system waypoints (MOB, Start, Cursor).
- **Routes:** Create up to 30 routes, each with a maximum of 170 points. Supports MOB and Track Navigation or Go to Track modes.
- **Tracks:** Automatically keeps an 8,000-point track log. Save up to 10 tracks (each up to 8,000 track points) and retrace your path in either direction.
- **Alarms:** Set alarms for XTE (Cross Track Error), Anchor drag, arrival, speed, voltage, proximity

waypoint, Timer, and AIS (CPA and TCPA).

- **Drawing:** Utilize 1000 drawing marks, 2000 drawing lines (40 points each), and 1000 drawing place names. Choose from 8 colors for drawing.
- **Palette:** Select display palettes for Normal, Daylight (exposed to sunlight), Night (dark environment), and NOAA paper chart colors.
- **Tides:** Built-in worldwide tide data.
- **Basemap:** Global basemap included.
- **External Map:** Compatible with K-Chart 2.0, K-Chart 3.0, C-Map Max, and Navionics+.
- **Split Screen:** Adjust the ratio of the split screen to prioritize either the plotter or fish finder view.

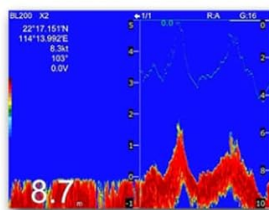


Compatible with the following mapping systems:



Built-in Fish Finder Feature

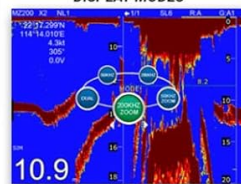
**Transducer required*



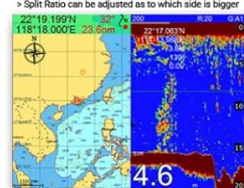
> Excellent Sea-bed Discrimination and easily identify fishes and school of fish
> Exact depth to where the school of fish is shown for ease of fishing

- 16 colors according to intensity
- Applies the most advanced Digital Fish Finder Technology
- Dual Frequency: 50 and 200kHz (alternately transmitted)
- Automatic Range and Gain adjustment depending on usage (Cruising or Fishing)

DISPLAY MODES



Split Screen with GPS Chart Plotter



Saves the position of a history echo into waypoint memory

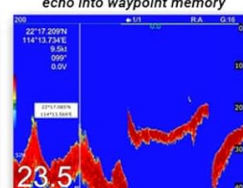


Image: The device display showing a split screen, with a detailed navigation chart on the left and real-time sonar data on the right, indicating fish presence and depth.

Fish Finder Functions

The integrated fish finder uses digital fish school detection technology for accurate underwater imaging.

- **Dual Frequency Transmit:** Supports 50 kHz and 200 kHz frequencies. The device automatically adjusts range and gain based on whether you are cruising or fishing.
- **Fish Detection:** Provides excellent identification of the seabed, fish, and fish schools, accurately displaying their depth.
- **Echo Color:** 16 colors (including background color) according to echo intensity. The background color is

selectable from blue, light blue, white, and black.

- **Basic Range:** Adjustable in feet (15/30/60/120/200/400/600/1000/2000/3000) or fathoms (3/5/10/20/40/80/150/300/600).
- **Display Modes:** High Frequency (200K), Low Frequency (50K), Dual (200K and 50K 1/2 display on each), Zoom (200K and 50K zoom), and A-Scope display.
- **Interference Rejecter:** Rejects unwanted signals by comparing last and present echoes.

NMEA Sentence Supported

INPUT

(Auto scan Baudrate)

GGA, GLL, GSA, GSV, RMC, HDG, HDM, HDT
VTG, ZDA, MTW, VWR, VWT, MWD, VPW, VHW
TLL, TTM, VDO, VDM, GNS, MTA
RMA, DBT, DPT, MWV, BWC, XTE, ZDL, WPL, AAM,
APB, BOD, RMB, DSC, MDA, RPM, XDR

OUTPUT

Baudrate: Selectable 4800, 9600, 19200, 38400

GGA, GLL, RMC, GSA, GSV, AAM, APA
APB, BOD, BWC, BWR, DBT, DPT, HDT
MTW, RMB, TLL, VTG, WPL, XTE, ZDA
ZTG, ZDL, MWD, VPW, VWR, VWT

OUTPUT for Autopilot

APA, APB, BOD, XTE

Power Supply

10.5 to 30VDC, current drain 1.5A at 12V

PHYSICAL

Size

155.2mm(H)X243mm(W)X84.6mm(D)

Weight

0.6 kg

Display

7-inch Color TFT dayview LCD, 800×600 pixels

Waterproofing

Display unit: IP66

Antenna unit: IP66

Temperature range

Display unit: -15°C to +55°C

Antenna unit: -25°C to +70°C

Image: The fish finder display showing clear sonar readings with distinct fish arches and depth indicators.

GPS Receiver Characteristics

- **Receiver:** 50 parallel channel GNSS receiver continuously tracks and uses up to 50 satellites to compute and update your position.
- **Acquisition Time:** Cold start: 29 seconds; Hot start: 1 second.
- **Update Rate:** 1 second or 0.1 second selectable.
- **Accuracy:** Position: 3 meters (95%) without S/A; Velocity: 0.1 meter/sec without S/A.
- **Satellite System:** Choice of 4 GNSS: GPS, Beidou, GLONASS, and Galileo.

NMEA Sentence Supported

Input: GGA, GLL, GSA, GSV, RMC, HDG, HDM, HDT, VTG, ZDA, MTW, VWR, VWT, MWD, VPW, VHW, TLL, TTM, VDO, VDM, GNS, MTA, RMA, DBT, DPT, MWV, BWC, XTE, ZDL, WPL, AAM, APB, BOD, BWC, BWR, DBT, DPT, HDT, MTW, RMB, TLL, VTG, WPL, XTE, ZDA, ZTG, ZDL, MWD, VPW, VWR, VWT.

Output: GGA, GLL, RMC, GSA, GSV, AAM, APA, APB, BOD, BWC, BWR, DBT, DPT, HDT, MTW, RMB, TLL, VTG, WPL, XTE, ZDA.

Output for Autopilot: APA, APB, BOD, XTE.

Baudrate: Selectable 4800, 9600, 19200, 38400.

MAINTENANCE

Regular maintenance ensures the longevity and optimal performance of your device.

- **Cleaning:** Gently wipe the display and casing with a soft, damp cloth. Avoid abrasive cleaners or solvents that could damage the screen or finish.
- **Connections:** Periodically check all cable connections (power, transducer, GPS antenna) to ensure they are secure and free from corrosion. Apply dielectric grease to exposed metal contacts if operating in harsh saltwater environments.
- **Software Updates:** Check the manufacturer's website for any available software updates. While guaranteed software updates are currently unknown, keeping the firmware updated can improve performance and add new features.
- **Storage:** When not in use for extended periods, store the device in a cool, dry place, protected from extreme temperatures and direct sunlight. Use the provided waterproof cover.

TROUBLESHOOTING

If you encounter issues with your Ymiko Marine GPS Plotter Fish Finder, refer to the following basic troubleshooting steps:

- **No Power:** Ensure the power cable is securely connected to both the device and the boat's power source. Check the inline fuse and replace if necessary. Verify the boat's battery voltage is within the 10.5-30VDC operating range.
- **No GPS Signal:** Confirm the GPS antenna is mounted in a location with a clear view of the sky. Check the antenna cable connection to the main unit. Allow sufficient time for the unit to acquire satellites (cold start: 29 seconds, hot start: 1 second).
- **No Sonar Readings:** Ensure the transducer is properly installed and submerged in water. Check the transducer cable connection to the main unit. Verify that the fish finder function is enabled in the device settings.
- **Display Issues:** If the screen is dim or unreadable, adjust the brightness settings. If the screen is frozen, try restarting the device.
- **Incorrect Readings:** Calibrate the depth offset if readings appear inaccurate. Ensure the correct transducer frequency (50/200 kHz) is selected for your conditions.

For more complex issues, please contact customer support.

SPECIFICATIONS

Feature	Specification
Model Number	Ymikovscwqgnz9o
Display Size	7 Inch
Display Type	Color TFT LCD

Feature	Specification
Display Resolution	800x600 pixels
Waterproofing	IP66 (Display Unit & Antenna Unit)
Power Supply	10.5 to 30VDC
Current Drain	1.5A at 12V
Dimensions (H x W x D)	155.2mm(H) x 243mm(W) x 84.6mm(D)
Weight	0.6 kg
Operating Temperature	-15°C to +55°C (Display Unit)
Storage Temperature	-25°C to +70°C (Antenna Unit)
Sonar Frequencies	50 kHz, 200 kHz
Sonar Power Output	600W
GPS Accuracy	3 meters (95%) without S/A
Compatible Maps	K-Chart 2.0, K-Chart 3.0, C-Map Max, Navionics+
Software Updates	Unknown

WARRANTY AND SUPPORT

Your Ymiko Marine GPS Plotter Fish Finder is covered by the manufacturer's standard warranty. For specific warranty terms and conditions, please refer to the documentation provided with your purchase or contact the seller.

For detailed product descriptions in electronic documents, software download links, or any technical assistance, please contact customer service. The product includes a detailed manual to assist you with its use.