



[Manuals.plus](#) /

> [Ant Esports](#) /

> Ant Esports ICE-360 ARGB 360mm AIO CPU Liquid Cooler User Manual

## Ant Esports ICE-360 ARGB

# Ant Esports ICE-360 ARGB 360mm AIO CPU Liquid Cooler User Manual

## 1. INTRODUCTION

---

This manual provides comprehensive instructions for the installation, operation, and maintenance of your Ant Esports ICE-360 ARGB 360mm All-in-One (AIO) CPU Liquid Cooler. Please read this manual thoroughly before installation to ensure proper setup and optimal performance. Keep this manual for future reference.

## 2. SAFETY INFORMATION

---

- Always disconnect power from your computer before installing or servicing any components.
- Handle components with care to avoid damage.
- Wear anti-static gloves or use an anti-static wrist strap to prevent electrostatic discharge (ESD) damage.
- Ensure all connections are secure before powering on your system.
- Do not attempt to open the pump or radiator, as this may void your warranty and cause leaks.

## 3. PACKAGE CONTENTS

---

Verify that all components listed below are present in your package. If any items are missing or damaged, please contact customer support.

# ACCESSORIES

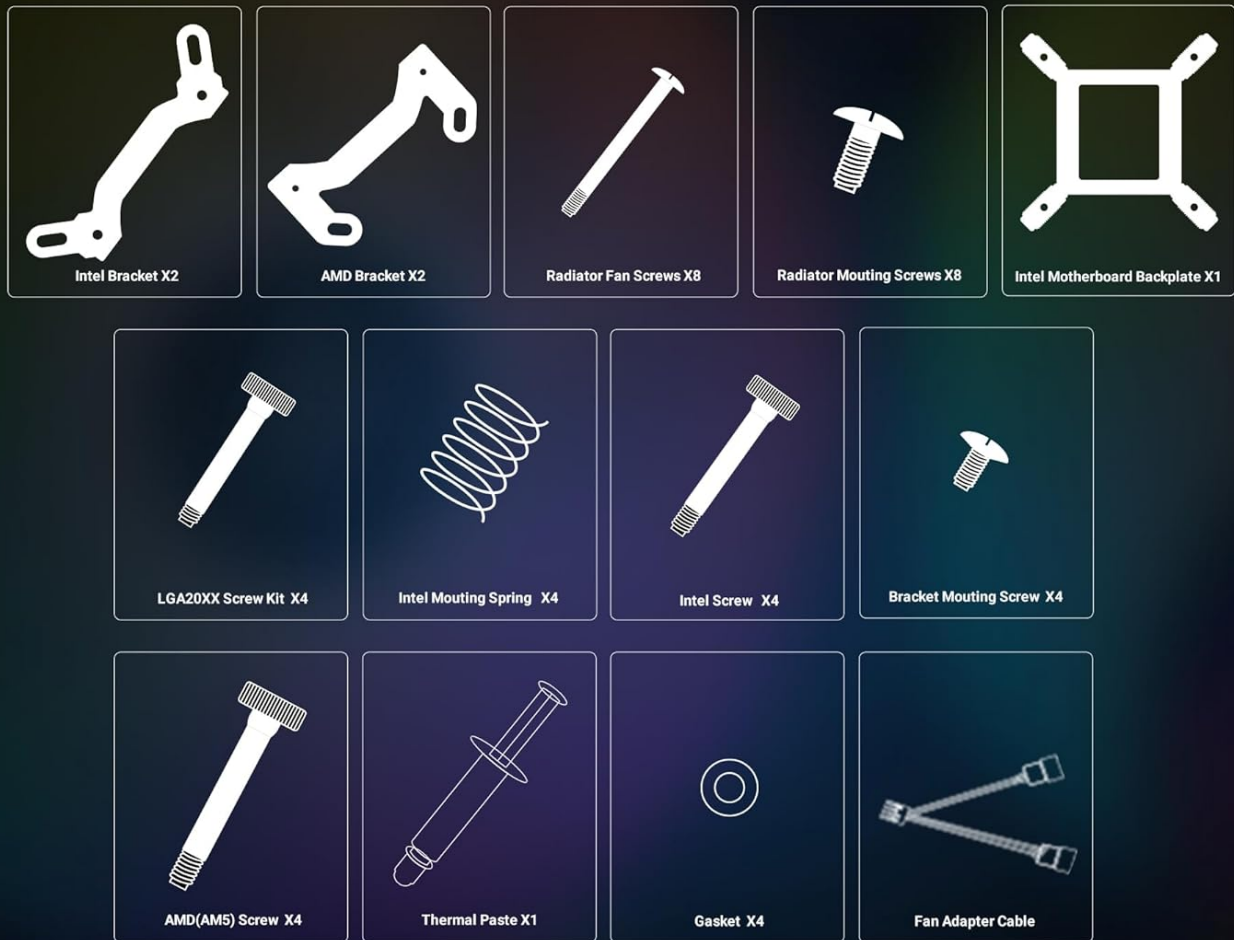


Image: Included accessories for the Ant Esports ICE-360 ARGB liquid cooler, showing various brackets, screws, thermal paste, and cables.

- Ant Esports ICE-360 ARGB Radiator with Pump and Tubing
- 3 x 120mm ARGB Fans
- Intel Mounting Bracket (x2)
- AMD Mounting Bracket (x2)
- Radiator Fan Screws (x8)
- Radiator Mounting Screws (x8)
- Intel Motherboard Backplate (x1)
- LGA20XX Screw Kit (x4)
- Intel Mounting Spring (x4)
- Intel Screw (x4)
- Bracket Mounting Screw (x4)

- AMD (AM5) Screw (x4)
- Thermal Paste (x1)
- Gasket (x4)
- Fan Adapter Cable (x1)

## 4. INSTALLATION GUIDE

This section details the steps for installing your Ant Esports ICE-360 ARGB liquid cooler. Ensure your motherboard is compatible with the cooler before proceeding.



Image: Compatibility information for Intel LGA1700 and AMD AM5 sockets, along with other supported Intel and AMD sockets.

### 4.1. Prepare the Radiator and Fans

1. Attach the three 120mm ARGB fans to the radiator using the provided radiator fan screws. Ensure the fan airflow direction is as desired (typically blowing air through the radiator and out of the case).

2. Mount the radiator assembly into your PC case. Use the radiator mounting screws to secure it to an available 360mm fan mount location (e.g., top, front).

## LARGE SURFACE AREA

A dense aluminum radiator provides large surface area for rapid heat dissipation to keep the CPU cool even under high loads.

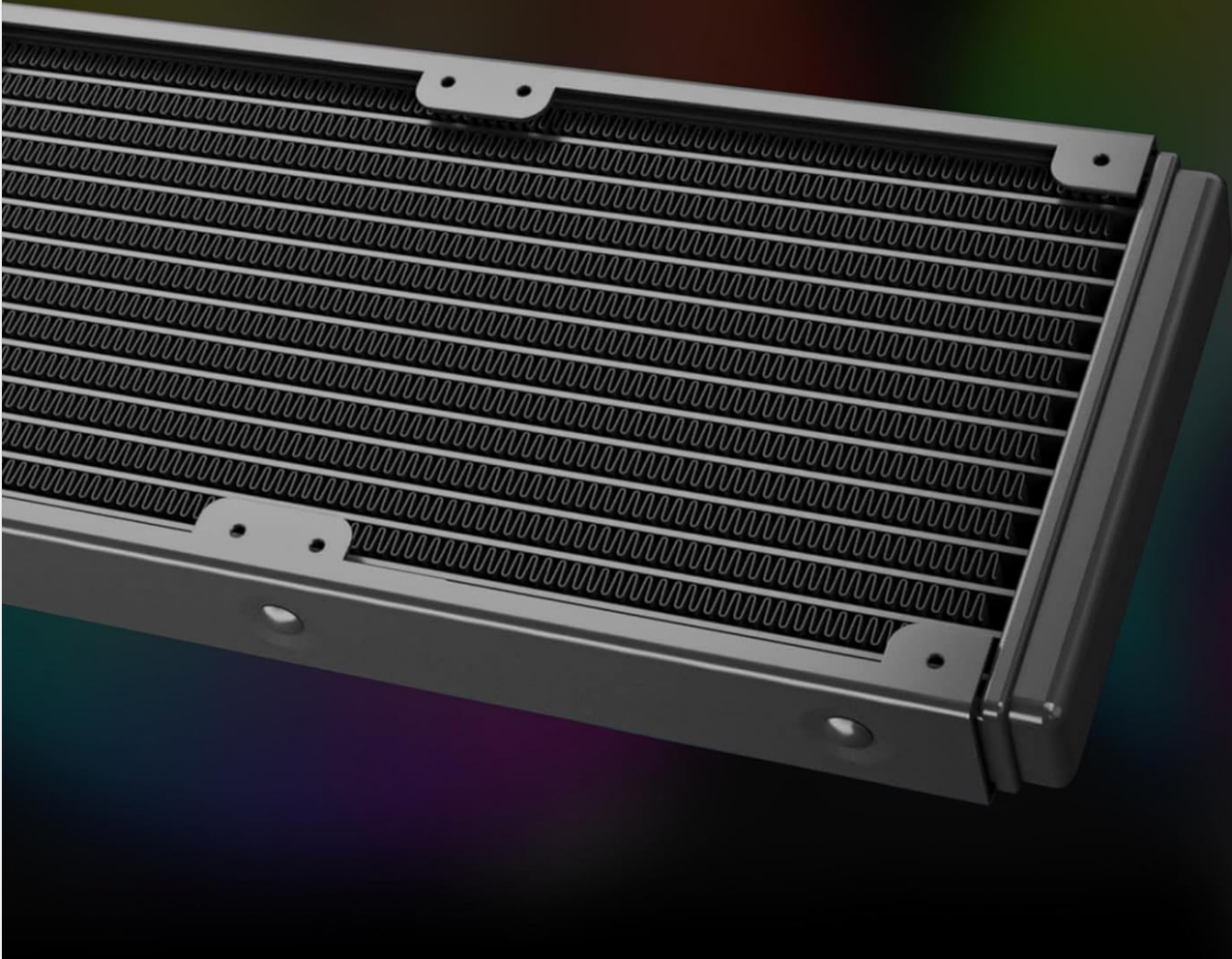


Image: Close-up view of the radiator fins, highlighting the large surface area for heat dissipation.

### 4.2. Install the CPU Water Block

The installation process varies slightly depending on your CPU socket type (Intel or AMD).

#### For Intel Sockets (LGA115X/1200/1700/1366/2011/2066):

1. For LGA115X/1200/1700, attach the Intel backplate to the rear of your motherboard, aligning the holes with the CPU socket.
2. Secure the correct Intel mounting bracket to the pump head.
3. Apply a small amount of thermal paste to the center of your CPU's integrated heat spreader (IHS).
4. Carefully place the water block onto the CPU, aligning the mounting holes.
5. Secure the water block using the appropriate Intel screws and springs, tightening them in a cross pattern until snug.

### For AMD Sockets (FM1/FM2/AM2/AM2+/AM3/AM3+/AM4/AM5):

1. Remove the stock AMD retention brackets from your motherboard, but keep the stock backplate.
2. Attach the AMD mounting bracket to the pump head.
3. Apply a small amount of thermal paste to the center of your CPU's integrated heat spreader (IHS).
4. Carefully place the water block onto the CPU, aligning the mounting holes with the stock backplate.
5. Secure the water block using the appropriate AMD screws, tightening them in a cross pattern until snug.

## LARGE COPPER BASE

A large custom made copper cold plate provides even contact with modern CPUs ensuring optimum heat transfer and cooling performance.

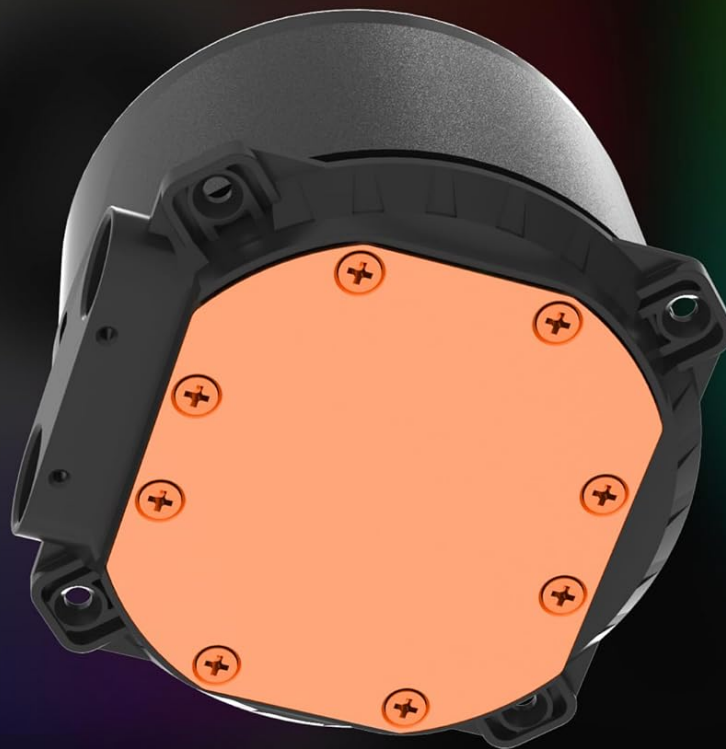


Image: Underside view of the pump block, showing the large copper cold plate designed for optimal heat transfer.

### 4.3. Connect Cables

1. Connect the pump's 3-pin power connector to an available CPU\_FAN or AIO\_PUMP header on your motherboard.
2. Connect the ARGB cables from the fans and the pump head to a 5V 3-pin ARGB header on your motherboard. If your motherboard has only one ARGB header, use the provided fan adapter cable to daisy-chain the fan ARGB cables.

3. Connect the fan PWM cables to the CPU\_FAN or other available fan headers on your motherboard. You may use a fan splitter cable if necessary.

## 5. OPERATING INSTRUCTIONS

### 5.1. PWM Control

The fans and pump support PWM (Pulse Width Modulation) control, allowing their speed to be adjusted based on CPU temperature. This can be configured through your motherboard's BIOS settings or via compatible software provided by your motherboard manufacturer.



## PWM Control

The fans support PWM control and their speed can be changed using BIOS settings or via the software of your choice.

Image: Example of a software interface for PWM fan speed control, showing options for fan curves and settings.

### 5.2. ARGB Lighting

The pump block and fans feature Addressable RGB (ARGB) lighting. This lighting can be controlled and synchronized via a 5V 3-pin ARGB header on your motherboard. Use your motherboard's RGB software (e.g., ASUS Aura Sync, MSI

Mystic Light Sync, GIGABYTE RGB Fusion, ASRock Polychrome Sync) to customize lighting effects and colors.



## VIVID ARGB LIGHTING

The pump block and fans come with ARGB lighting and can be controlled via 5V 3-pin ARGB header on the motherboard.



Image: The Ant Esports ICE-360 ARGB cooler showcasing its vibrant, customizable ARGB lighting on the fans and pump head.

## 6. MAINTENANCE

- **Dust Cleaning:** Periodically clean the radiator fins and fan blades with compressed air to remove dust buildup. Dust can impede airflow and reduce cooling efficiency.
- **Tubing Inspection:** Regularly check the tubing for any signs of wear, kinks, or leaks. The durable EPDM tubing and braided sleeving are designed for longevity, but visual inspection is recommended.
- **Pump Noise:** A slight hum from the pump is normal. If you notice excessive or unusual noise, refer to the troubleshooting section.

# DURABLE TUBING

EPDM tubing ensures high tensile resistance and avoid abrupt bending. Braided tubing avoid permeation so your cooler can last longer without any issues.

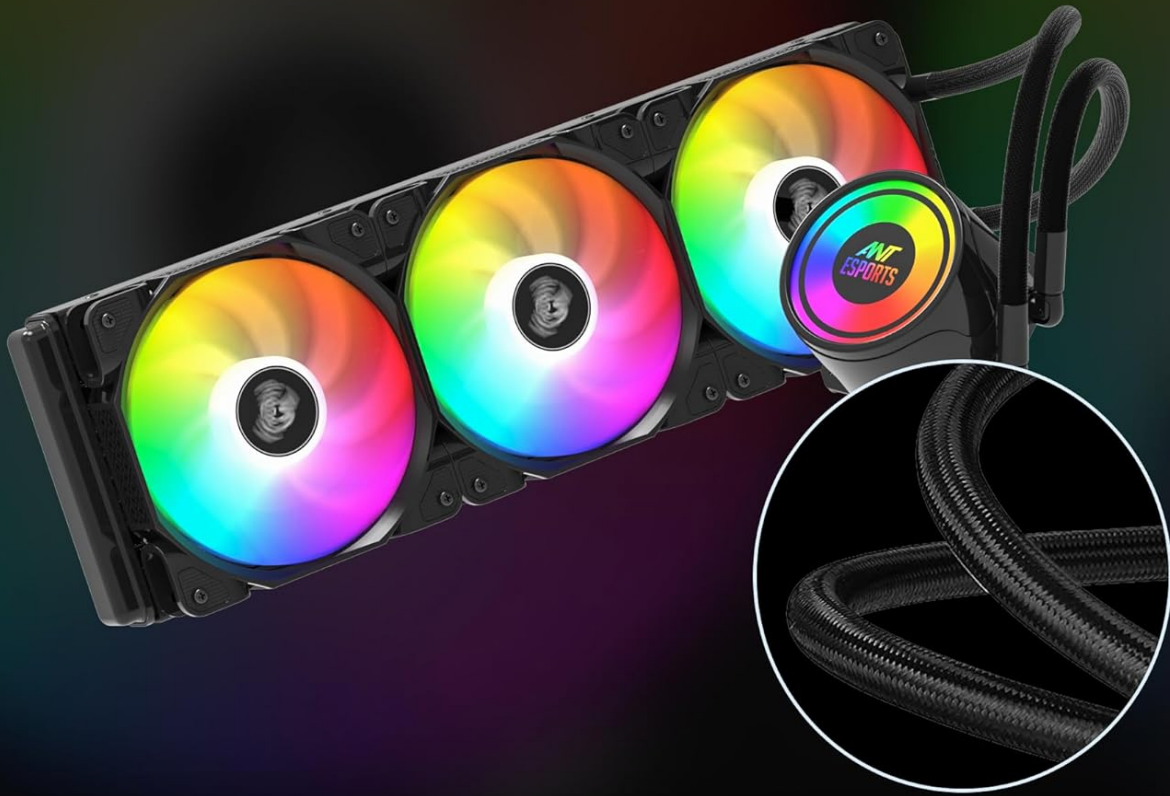


Image: The Ant Esports ICE-360 ARGB cooler highlighting its durable EPDM tubing with braided sleeving, designed for high tensile resistance and to prevent permeation.

## 7. TROUBLESHOOTING

Problem	Possible Cause	Solution
High CPU Temperatures	Improper installation of water block; insufficient thermal paste; dust buildup on radiator; pump not functioning.	Re-seat water block, ensure even pressure; reapply thermal paste; clean radiator and fans; check pump connection and function.
Fans Not Spinning / No ARGB Lighting	Loose or incorrect cable connections; ARGB header not enabled in BIOS; software conflict.	Verify all fan and ARGB cables are correctly connected to motherboard headers; check BIOS settings for fan control and ARGB; try different ARGB software or reinstall.

Problem	Possible Cause	Solution
Unusual Pump Noise	Air trapped in the loop; pump running at maximum speed.	Gently tilt your PC case to help dislodge air bubbles; adjust pump speed settings in BIOS or software to a lower, stable RPM.

## 8. SPECIFICATIONS

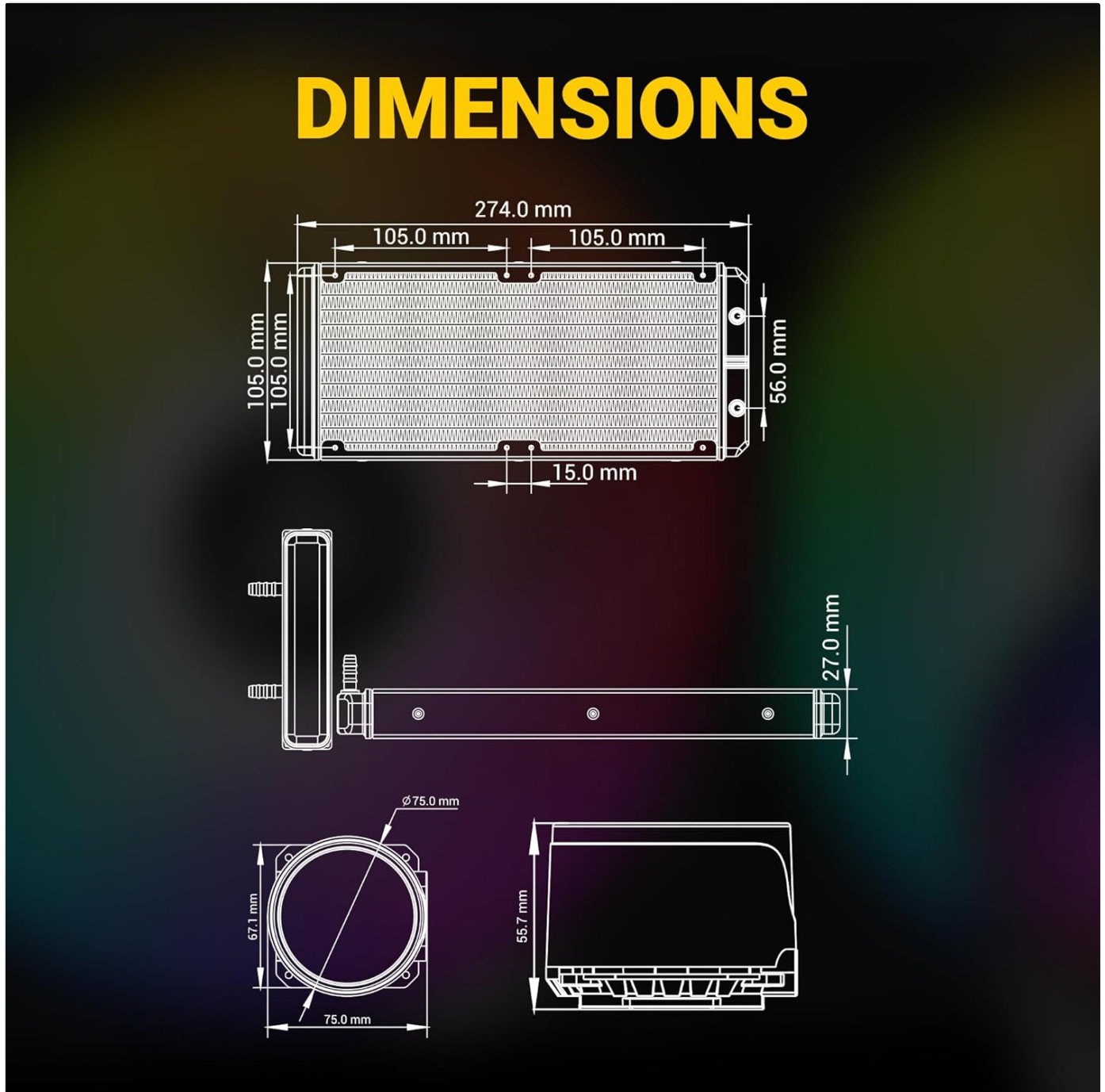


Image: Technical diagram showing the precise dimensions of the radiator and pump block.

Feature	Detail
Model Number	ICE-360 ARGB

Feature	Detail
Radiator Dimensions	394mm x 120mm x 27mm
Fan Dimensions	120mm x 120mm x 25mm
Fan Speed	800~2000 RPM ±10%
Fan Airflow	75 CFM Max
Fan Air Pressure	2.9 mmAq
Fan Noise Level	32 dB(A)
Radiator Material	Aluminium
Cooling Method	Water
Power Connector Type	3-Pin (Pump)
Compatible Devices	Desktop
CPU Socket Compatibility	Intel: LGA115X/1200/1700/1366/2011/2066 AMD: FM1/FM2/AM2/AM2+/AM3/AM3+/AM4/AM5
Item Weight	1469 Grams
Country of Origin	China

## 9. WARRANTY INFORMATION

---

The Ant Esports ICE-360 ARGB CPU Liquid Cooler comes with a **2-year manufacturer warranty**. This warranty covers defects in materials and workmanship under normal use. Please retain your proof of purchase for warranty claims. For detailed warranty terms and conditions, please refer to the official Ant Esports website or contact customer support.

## 10. CUSTOMER SUPPORT

---

If you encounter any issues or have questions regarding your Ant Esports ICE-360 ARGB liquid cooler, please contact our support team:

- **Manufacturer:** Ant Esports
- **Manufacturer Contact Information:** 522/1 Village Jonapur, New Delhi -110030
- **Importer Contact Information:** Acro Engineering Company - Z41 Okhla Phase II, Sanjay Colony II, Pocket Z, Okhla Industrial Estate, New Delhi, Delhi 110020

For the latest drivers, software, and FAQs, please visit the official Ant Esports website.

