

Manuals+

[Q & A](#) | [Deep Search](#) | [Upload](#)

[manuals.plus](#) /

› [OREiN](#) /

› [OREiN 2-in-1 Bathroom Exhaust Fan with Light User Manual](#)

OREiN OL17001-3CCT

OREiN 2-in-1 Bathroom Exhaust Fan with Light

Model: OL17001-3CCT

Brand: OREiN

INTRODUCTION

This manual provides detailed instructions for the installation, operation, and maintenance of your OREiN 2-in-1 Bathroom Exhaust Fan with Light. Please read this manual thoroughly before installation and use to ensure proper function and safety. Keep this manual for future reference.

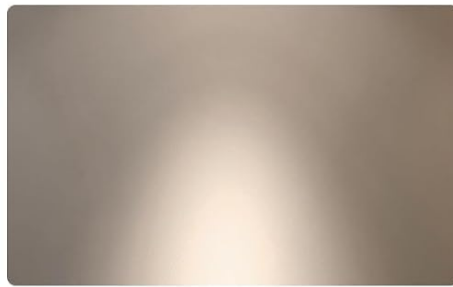
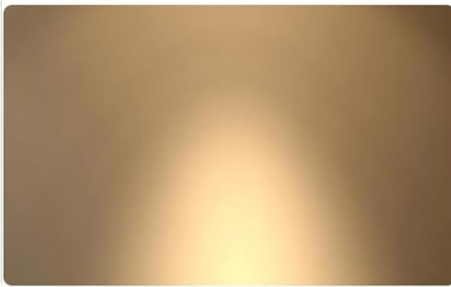
IMPORTANT SAFETY INFORMATION

Always follow basic safety precautions when installing, operating, or maintaining electrical appliances. Failure to do so may result in fire, electric shock, or injury to persons.

- Disconnect power at the service panel before wiring or servicing this unit.
- All wiring must comply with local electrical codes and standards.
- This unit is designed for general ventilating use only. Do not use to exhaust hazardous or explosive materials and vapors.
- To reduce the risk of fire or electrical shock, do not expose this unit to water or moisture.
- Ensure proper grounding to prevent electrical shock.
- Do not install in a cooking area.
- Always wear safety glasses and gloves during installation.

PRODUCT OVERVIEW AND FEATURES

The OREiN 2-in-1 Bathroom Exhaust Fan with Light is designed to provide efficient ventilation and illumination for your bathroom. It features a quiet operation and selectable color temperature LED lighting.



The OREiN 2-in-1 Bathroom Exhaust Fan with Light, showcasing its integrated design and the three selectable light color temperatures (3000K, 4000K, 5000K) at the bottom.

Premium Materials & Components

01

Heavy-duty
Housing

02

Powerful Motor

03

Easy Installation
Bracket

04

Energy-Efficient
LED Light



Diagram illustrating the premium materials and components, including the heavy-duty housing, powerful motor, easy installation bracket, and energy-efficient LED light.

Powerful 100 CFM Airflow



Visual comparison demonstrating the powerful 100 CFM airflow, showing a bathroom before and after the fan effectively removes steam and humidity.

Energy-Efficient & Quiet DC Motor

Ultra-Quiet 1.5 Sones



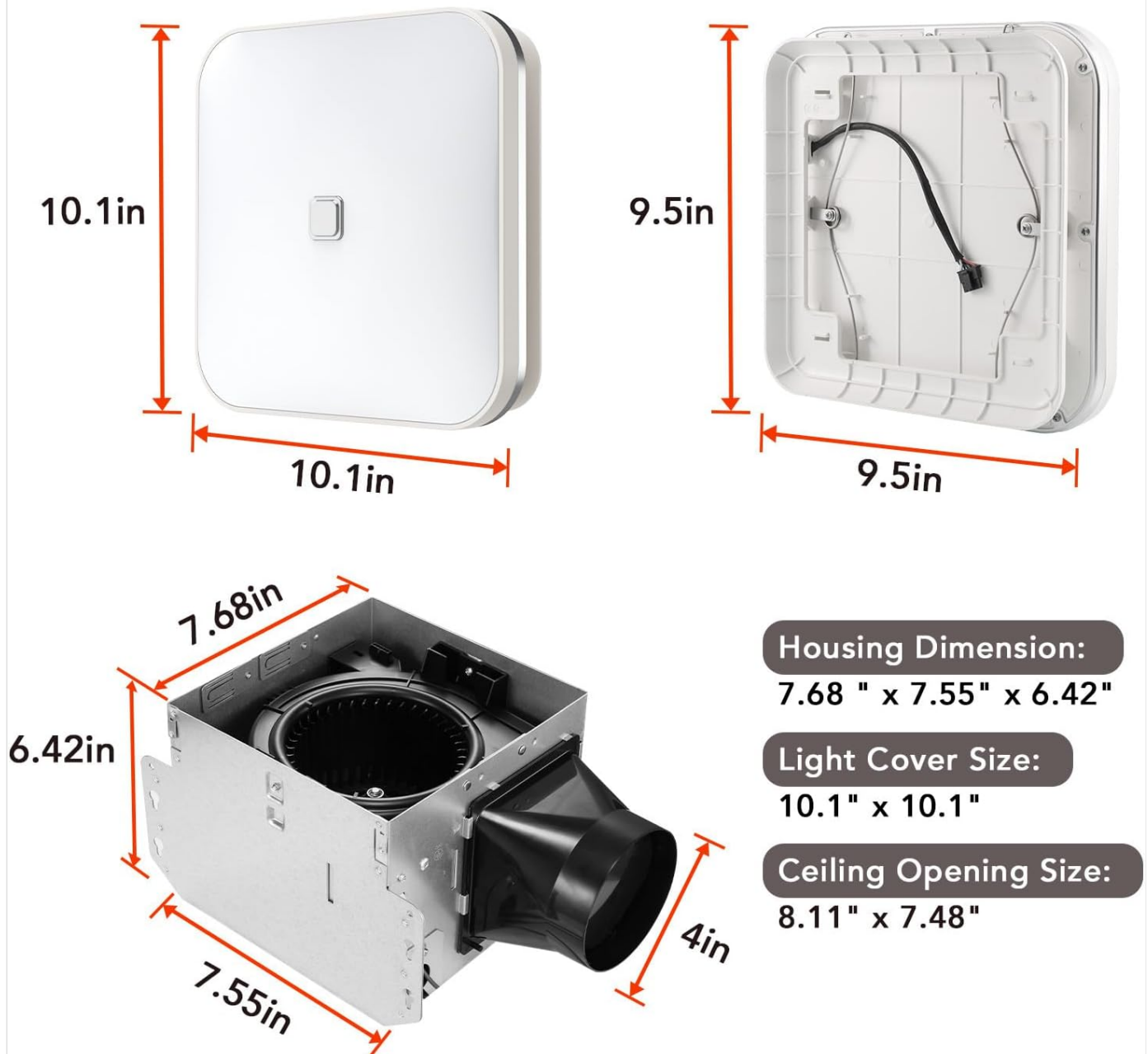
An exploded view of the energy-efficient and quiet DC motor, highlighting its design for ultra-quiet operation at 1.5 sones.

Key Features:

- **High Performance:** Operates at 100 CFM (Cubic Feet Per Minute) for effective moisture and odor removal.
- **Quiet Operation:** Rated at 1.5 Sones for minimal noise disruption.
- **Integrated LED Light:** Bright 1000lm LED light illuminates your bathroom.
- **3CCT Selectable Lighting:** Choose between 3000K (soft white), 4000K (bright white), or 5000K (daylight) color temperatures.
- **Nightlight Function:** Includes a 2200K nightlight for low-level illumination in the dark.
- **Durable Construction:** Equipped with high-quality components and a DC motor for long-lasting performance.
- **Easy Installation:** Designed with a fast bracket for secure and straightforward installation between ceiling joists.
- **Certifications:** FCC and ETL Listed for reliability and safety.

SPECIFICATIONS

Product Size



Detailed diagram showing the product dimensions, including the light cover size (10.1" x 10.1"), housing dimensions (7.68" x 7.55" x 6.42"), and recommended ceiling opening size (8.11" x 7.48").

Powerful Bathroom Fan with Light

Material

Metal + Plastic

Exhaust Volume

100 CFM

Sound

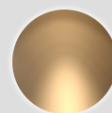
1.5 Sone

Power

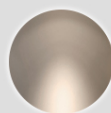
25W Fan + 10W Light

Color Temperature

3000K/4000K/5000K + 2200K



3000K



4000K



5000K



Select the light color by sliding the toggle switch on the fan housing



ON-OFF-ON circling to switch the nightlight
Must occur within 2 seconds

An infographic summarizing key product specifications such as material, exhaust volume, sound level, power consumption, and color temperature options.

Specification	Value
Model Name	OL17001-3CCT
Air Flow Capacity	100 CFM
Noise Level	1.5 Sones
Wattage	25W (Fan) + 10W (Light)
Light Output	1000lm
Color Temperature	3000K/4000K/5000K Selectable, 2200K Nightlight
Housing Dimensions (L x W x H)	7.68" x 7.55" x 6.42"
Light Cover Size	10.1" x 10.1"
Ceiling Opening Size	8.11" x 7.48"
Voltage	120 Volts
Power Source	AC
Installation Type	Flush Mount
Certifications	FCC, ETL Listed

SETUP AND INSTALLATION

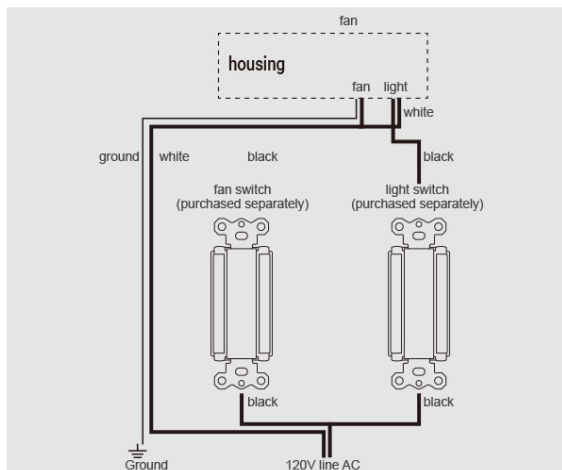
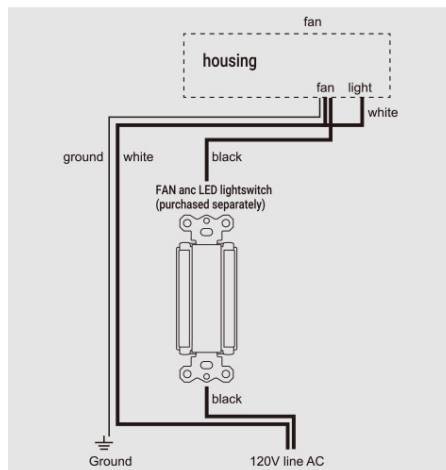
Before beginning installation, ensure all necessary tools and materials are available. Always disconnect power at the circuit breaker before starting any electrical work.

Tools and Materials (Not Included):

- Screwdriver (Phillips and Flathead)
- Wire Strippers
- Drill
- Measuring Tape
- Utility Knife or Drywall Saw
- Duct Tape or Clamps
- Safety Glasses and Gloves

Installation Steps:

1. **Prepare the Opening:** Ensure the ceiling opening is 8.11" x 7.48". If replacing an existing fan, remove the old unit.
2. **Mount the Housing:** The fan comes with a fast bracket for secure installation. Mount the bathroom fan light combo between ceiling joists using the fast bracket, or nail/screw it directly to the joist. The housing dimensions are 7.68" x 7.55" x 6.42".
3. **Connect Ductwork:** Connect the appropriate ductwork (not included) to the fan's exhaust port. Ensure the duct does not bend into the opening to block the damper. Secure with duct tape or clamps to prevent air leaks.
4. **Wiring:** Follow the wiring diagrams provided below. Ensure all connections are secure and comply with local electrical codes. This unit requires a 120V AC power source.
5. **Install Light Cover:** Once wiring is complete and tested, attach the light cover (10.1" x 10.1") to the fan housing.



Warning: Make sure that the duct does not bend into the opening to block the damper

Detailed wiring diagrams for the OREiN bathroom fan, showing configurations for a single switch controlling both fan and light, and separate switches for fan and light. Includes a warning about duct obstruction.

OPERATING INSTRUCTIONS

Your OREiN Bathroom Exhaust Fan with Light is designed for simple operation. The fan and light functions are typically controlled by wall switches (purchased separately).

Fan Operation:

- Turn on the wall switch connected to the fan to activate the exhaust fan.
- The fan operates at 100 CFM to effectively remove moisture and odors from the bathroom.
- Note: The fan may take a few seconds to start up. This slow start mechanism is designed to protect the DC motor and extend its lifespan.

Light Operation (3CCT Selectable & Nightlight):

3 Color Temperature Selectable



Select the light color by sliding the toggle switch on the fan housing

Visual representation of the three selectable color temperatures: 5000K (daylight), 4000K (bright white), and 3000K (soft white).

3CCT Selectable & Nightlight

On-Off-On Cycling the light switch
within 2 seconds to change the nightlight mode



10W



3CCT-1000lm



Nightlight-200lm



An illustration detailing the 3CCT (3000K/4000K/5000K) and nightlight (2200K) features, including the wattage and lumen output.

- **Selecting Color Temperature (CCT):** Before installation, locate the toggle switch on the back of the bathroom fan housing. Slide this switch to preset your desired LED color temperature: 3000K (soft white), 4000K (bright white), or 5000K (daylight). This setting is fixed once installed unless the unit is accessed again.
- **Activating Nightlight:** To switch to the 2200K nightlight mode, cycle the light switch (On-Off-On) within 2 seconds. This rapid cycling will toggle between the main light and the nightlight mode.

MAINTENANCE

Regular maintenance helps ensure optimal performance and extends the lifespan of your exhaust fan. Always disconnect power at the circuit breaker before performing any maintenance.

Cleaning the Light Cover:

- Carefully remove the light cover from the fan housing.
- Wipe the cover with a soft, damp cloth. Use mild soap if necessary.

- Do not use abrasive cleaners or solvents, as they may damage the finish.
- Ensure the cover is completely dry before reattaching.

Cleaning the Fan Housing and Motor:

- With the power off, gently vacuum or wipe away any dust or debris from the fan blades and interior of the housing.
- Do not spray water directly into the motor or electrical components.
- Ensure all parts are dry before restoring power.

TROUBLESHOOTING

If you experience issues with your OREiN Bathroom Exhaust Fan with Light, refer to the following common problems and solutions. If the problem persists, contact customer support.

Problem	Possible Cause	Solution
Fan does not turn on.	No power to the unit. Loose wiring connection. Faulty wall switch.	Check circuit breaker and ensure power is on. Verify all wiring connections are secure (with power off). Test or replace the wall switch.
Light does not turn on.	No power to the unit. Loose wiring connection. Faulty wall switch.	Check circuit breaker and ensure power is on. Verify all wiring connections are secure (with power off). Test or replace the wall switch.
Fan is noisy.	Ductwork obstruction or improper installation. Loose mounting. Debris in fan blades.	Check ductwork for kinks or blockages. Ensure damper is not obstructed. Verify the fan housing is securely mounted to the joists. Disconnect power and clean fan blades.
Poor ventilation/humidity remains.	Ductwork obstruction. Fan size inadequate for room. Air leaks in ductwork.	Check ductwork for blockages or kinks. Ensure the fan's CFM rating is appropriate for your bathroom size. Seal all duct connections with appropriate tape.
Light color temperature is incorrect.	CCT toggle switch set incorrectly. Accidental nightlight activation.	Ensure the CCT toggle switch on the fan housing is set to your desired temperature (requires accessing the unit). Cycle the light switch (On-Off-On within 2 seconds) to toggle between main light and nightlight mode.

WARRANTY INFORMATION

OREiN products are manufactured to high-quality standards and are warranted to be free from defects in materials and workmanship. Specific warranty terms and duration may vary. Please retain your proof of purchase for warranty claims. For detailed warranty information or to initiate a warranty claim, please contact OREiN customer support using the information provided in the Support section.

CUSTOMER SUPPORT

For any questions, technical assistance, or support regarding your OREiN Bathroom Exhaust Fan with Light, please contact our customer service team.

- **Phone Support:** 1(844)506-1530 (24-Hour Service)
- **Online Support:** Contact us directly on Amazon or search for 'OREiN' online to find our official website and contact options.
- **Returns:** While returns can be processed through Amazon's logistics, we encourage you to contact us first for assistance

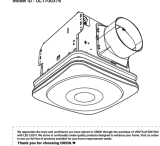

with any issues before initiating a return.



Image showing a customer service representative and the 24-hour service phone number for support.

Related Documents - OL17001-3CCT

	<p>OREiN Bathroom Exhaust Fan with Light - Troubleshooting and FAQs</p> <p>Find solutions to common issues with your OREiN Bathroom Exhaust Fan with Light, including installation, performance, noise, and moisture problems. Get answers to frequently asked questions.</p>
	<p>OREIN 110/160 CFM Bath Fan with Bluetooth Speaker, 3CCT & Night Light: Quick User Guide</p> <p>This guide provides instructions for installing and operating the OREIN 110/160 CFM Bath Fan with Bluetooth Speaker, featuring 3CCT and a night light. It covers safety information, product specifications, installation steps for new and existing constructions, wiring diagrams, troubleshooting, and remote operation.</p>
	<p>OREIN 110/160CFM Bath Fan with Bluetooth Speaker, 3CCT & Night Light - Quick User Guide</p> <p>This document provides a quick user guide for the OREIN 110/160CFM Bath Fan, detailing its features including Bluetooth speaker, 3CCT lighting, and night light. It covers product specifications, installation instructions for new and existing constructions, wiring diagrams, care and maintenance, troubleshooting, and remote operation.</p>
	<p>OREIN 100CFM Bath Fan with 3CCT LED Light & Night Light Quick User Guide</p> <p>Comprehensive quick user guide for the OREIN 100CFM Bathroom Exhaust Fan with 3CCT LED Light and Night Light. Includes installation instructions, specifications, safety information, care, and troubleshooting.</p>

<div data-bbox="127 89 183 112">OREiN <small>Advanced Air Technology</small></div> <div data-bbox="127 123 287 168">160CFM Bath Fan with Humidity Sensor, 3CCT & Night Light <small>Quick User Guide</small> <small>Model ID: 16L1700079</small></div> <div data-bbox="127 179 287 324"></div> <div data-bbox="127 324 287 336"><small>Please read the following safety information before installation. Please refer to the following safety information.</small></div>	<div data-bbox="335 168 1348 212">OREiN 160CFM Bath Fan with Humidity Sensor, 3CCT & Night Light - Quick User Guide</div> <div data-bbox="335 212 1484 369"><p>This guide provides instructions for the installation and operation of the OREiN 160CFM Bath Fan with Humidity Sensor, 3CCT & Night Light. It covers safety information, product specifications, installation procedures for new and existing construction, light mode operation, humidity sensor functionality, care and maintenance, and troubleshooting.</p></div>
<div data-bbox="127 481 183 504">OREiN <small>Advanced Air Technology</small></div> <div data-bbox="127 515 287 560">80/110CFM Bath Fan with 3CCT Light & Humidity Sensor <small>Model ID: 80L0801112</small></div> <div data-bbox="127 571 287 716"></div> <div data-bbox="127 716 287 728"><small>Please read the following safety information before installation. Please refer to the following safety information.</small></div>	<div data-bbox="335 515 1388 593">OREiN 80/110CFM Bath Fan with 3CCT Light & Humidity Sensor Installation and Operation Manual</div> <div data-bbox="335 593 1484 716"><p>Comprehensive guide for installing, operating, and maintaining the OREiN 80/110CFM Bath Fan with 3CCT LED Light and Humidity Sensor. Includes safety information, troubleshooting, and specifications.</p></div>