

## ForeverPRO 00753864

# ForeverPRO 00753864 PC Board Instruction Manual

Replacement Component for Bosch Appliances

## INTRODUCTION

---

This manual provides essential instructions for the proper installation, functionality verification, and maintenance of the ForeverPRO 00753864 PC Board. This component is a high-quality replacement part designed for various Bosch appliances. Please read this manual thoroughly before attempting any installation or repair work to ensure safety and correct operation.

## SAFETY INFORMATION

---

- **Disconnect Power:** Always disconnect the appliance from its main power source before beginning any installation, repair, or maintenance procedures. Failure to do so can result in electric shock or serious injury.
- **Personal Protective Equipment (PPE):** Wear appropriate safety gear, such as gloves and safety glasses, to protect against potential hazards.
- **Static Electricity:** Handle the PC board by its edges to avoid damaging sensitive electronic components due to electrostatic discharge.
- **Professional Assistance:** If you are unsure about any step or procedure, consult a qualified appliance technician.
- **Original Appliance Manual:** Refer to your specific appliance's service manual for detailed disassembly and reassembly instructions.

## PRODUCT OVERVIEW

---

The ForeverPRO 00753864 PC Board is a premium replacement part engineered to meet or exceed the specifications of the original equipment manufacturer (OEM). It is designed to replace Bosch part number 753864 and is compatible with a wide range of Bosch, Thermador, and Gaggenau appliances.

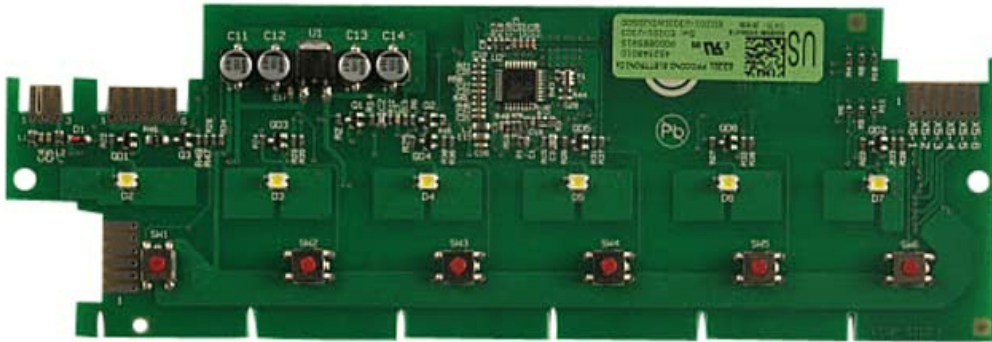


Image of the ForeverPRO 00753864 PC Board, illustrating its electronic components and connection points. This board serves as a direct replacement for the original part.

## INSTALLATION INSTRUCTIONS

---

1. **Prepare Appliance:** Ensure the appliance is completely disconnected from its power supply.
2. **Access Board:** Carefully open the appliance panels to gain access to the existing PC board. Refer to your appliance's service manual for specific access procedures.
3. **Disconnect Old Board:** Document or photograph the wiring connections. Carefully disconnect all wiring harnesses and connectors from the old PC board.
4. **Remove Old Board:** Unmount and remove the old PC board from its housing.
5. **Install New Board:** Position the new ForeverPRO 00753864 PC Board into the designated slot or mounting points.
6. **Reconnect Wiring:** Reconnect all wiring harnesses and connectors to the new PC board, ensuring each connection is secure and matches your documentation from step 3.
7. **Secure Board:** Ensure the new PC board is firmly mounted and all connections are properly seated.
8. **Reassemble Appliance:** Carefully reassemble the appliance panels and secure them.
9. **Restore Power:** Reconnect the appliance to its power source.

## FUNCTIONALITY VERIFICATION

---

After successful installation, power on the appliance and perform a comprehensive functional test. Operate various cycles and features to confirm that the PC board is working correctly and the appliance responds as expected. Consult your appliance's user manual for specific testing procedures or diagnostic modes.

## MAINTENANCE

---

The ForeverPRO 00753864 PC Board is designed for long-term reliability and typically requires no routine maintenance. To ensure optimal performance and longevity of all electronic components within your appliance:

- Keep the appliance area clean and free from excessive dust and debris.
- Avoid exposing the appliance to extreme temperatures or high humidity.
- Ensure proper ventilation around the appliance to prevent overheating.

## TROUBLESHOOTING

---

If your appliance does not function correctly after installing the ForeverPRO 00753864 PC Board, consider the following troubleshooting steps:

- **Power Check:** Verify that the appliance is properly connected to a power source and that the circuit breaker has not tripped.
- **Connections:** Double-check all wiring harnesses and connectors on the PC board to ensure they are securely and correctly seated. Loose connections are a common cause of issues.
- **Compatibility:** Confirm that the ForeverPRO 00753864 PC Board is the correct replacement part for your specific appliance model.
- **Appliance Diagnostics:** Consult your appliance's service manual for specific diagnostic codes or troubleshooting procedures relevant to the symptoms observed.
- **Professional Help:** If the problem persists after performing these checks, it is recommended to contact a qualified appliance technician or ForeverPRO customer support.

## SPECIFICATIONS

---

<b>Manufacturer</b>	ForeverPRO
<b>Part Number</b>	00753864
<b>Item Model Number</b>	00753864
<b>Item Package Quantity</b>	1
<b>Included Components</b>	Pc Board
<b>ASIN</b>	B0C379Z2Y1

## WARRANTY INFORMATION

---

ForeverPRO products are manufactured to high standards of quality and durability. For specific warranty details pertaining to your ForeverPRO 00753864 PC Board, please refer to the product packaging or contact ForeverPRO customer support directly. Keep your proof of purchase for warranty claims.

## SUPPORT INFORMATION

---

For technical assistance, installation guidance, or any other inquiries regarding the ForeverPRO 00753864 PC Board, please contact ForeverPRO customer support. Contact information can typically be found on the product packaging or on the official ForeverPRO website. When contacting support, please have your product model number and purchase details ready.