



[Manuals.plus](#) /

> [lumizone](#) /

> Lumizone Extra Tall Pressure Mounted Pet Gate User Manual (61.02" H, 30.12"-34.05" W, Cream)

## Lumizone 61.02" H-Cream

# Lumizone Extra Tall Pressure Mounted Pet Gate User Manual

Model: 61.02" H-Cream | Brand: Lumizone

## INTRODUCTION

This manual provides detailed instructions for the installation, operation, and maintenance of your Lumizone Extra Tall Pressure Mounted Pet Gate. Designed for safety and convenience, this gate helps secure areas for pets and children. Please read all instructions carefully before assembly and use.

## SAFETY INFORMATION

- The gate stands at 61.02 inches, designed to prevent most cats and larger dogs from jumping over.
- A narrow 1.37-inch gap between bars prevents small pets and babies from squeezing through.
- Features a double-locking mechanism for enhanced security, preventing accidental opening by pets or children.
- This gate is for domestic use only. Do not use for purposes other than intended.
- Regularly check all parts for proper assembly and tightness.

## PRODUCT OVERVIEW & DIMENSIONS

The Lumizone Extra Tall Pet Gate is a pressure-mounted gate suitable for openings between 30.12 and 34.05 inches wide, with a height of 61.02 inches. It is constructed from durable metal and features a cream finish.



Figure 1: Lumizone Extra Tall Pet Gate (Cream, 61.02" H)

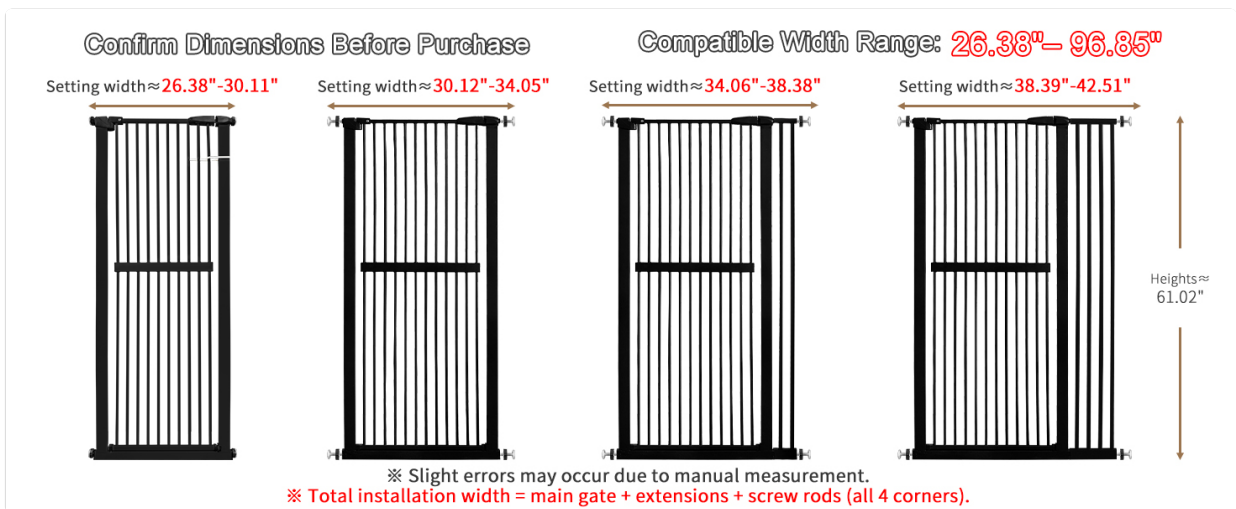


Figure 2: Gate Dimensions. Height is approximately 61.02 inches. Setting width is approximately 30.12-34.05 inches. Total installation width includes the main gate and screw rods at all four corners. Slight errors may occur due to manual measurement.



Figure 3: The gate features a narrow 1.37-inch gap between bars, preventing small pets and babies from passing through, unlike products with wider gaps.

## SETUP & INSTALLATION

The Lumizone pet gate is designed for pressure-mounted installation, requiring no drilling and causing no damage to walls. It is installed against walls on both sides for stability.



Figure 4: Installation Steps. 1. Insert bolt into the pet gate. 2. Rotate the ring (not the bolt) to adjust. 3. Fix securely between door frames or walls by applying pressure. 4. Cut off the zip tie after installation is complete.



Figure 5: Installation Precautions. Do not cut off the zip ties until installation is finished. An initial gap in the lock area is normal and not a defect; it will close firmly after proper pressure installation.

## OPERATING INSTRUCTIONS

The gate features a convenient walk-through design with an auto-close function and a double-locking mechanism for security.

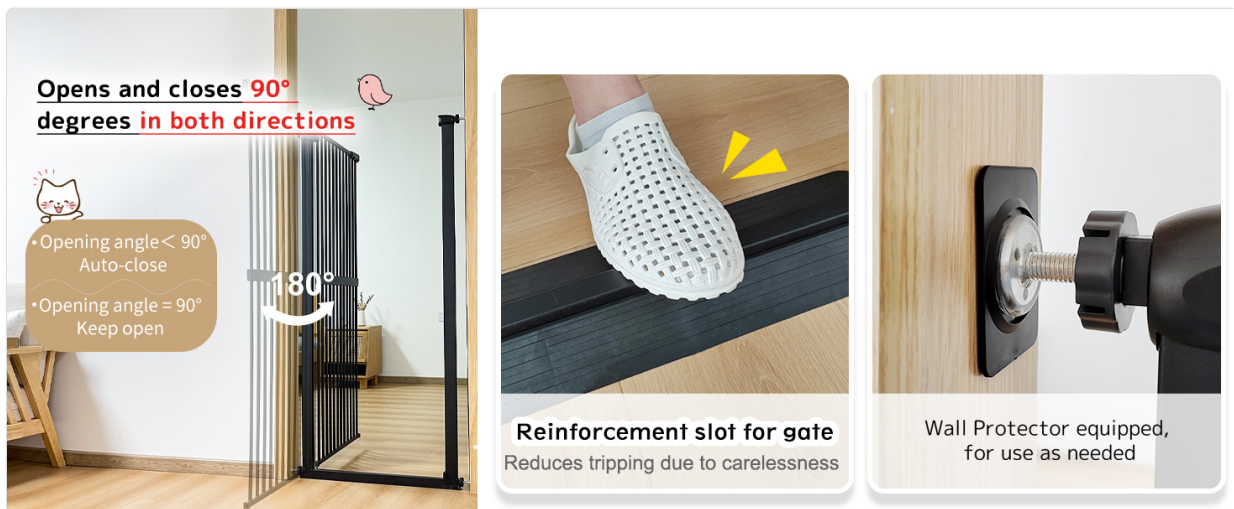


Figure 6: The gate automatically closes if opened less than 90 degrees. It stays open when pushed to a 90-degree angle for easy access.

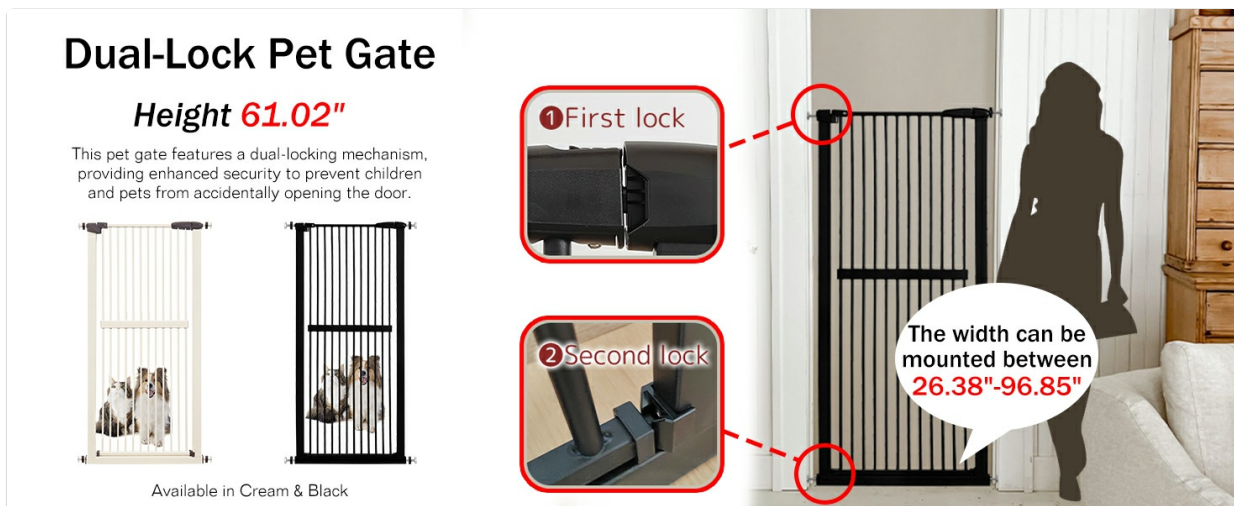


Figure 7: The gate is equipped with a dual-locking mechanism. To open, slide the knob, lift up the gate, and then pull or push. This ensures secure closure against pets and children.

## MAINTENANCE

To ensure the longevity and proper function of your pet gate, regular maintenance is recommended:

- Clean the gate regularly with a soft, damp cloth and mild soap. Avoid abrasive cleaners.
- Periodically check all pressure mounts and locking mechanisms to ensure they are secure and functioning correctly.
- Ensure the gate opens and closes smoothly. If any resistance is felt, check for obstructions or misalignment.

## TROUBLESHOOTING

### Gate appears to have a gap or is not closing properly:

During initial setup, before the gate is fully pressure-mounted, it is normal for there to be a gap at the top or bottom

of the gate near the latch. This is not a defect. The gap will close as the pressure bolts are tightened during installation, creating tension against the wall or door frame.

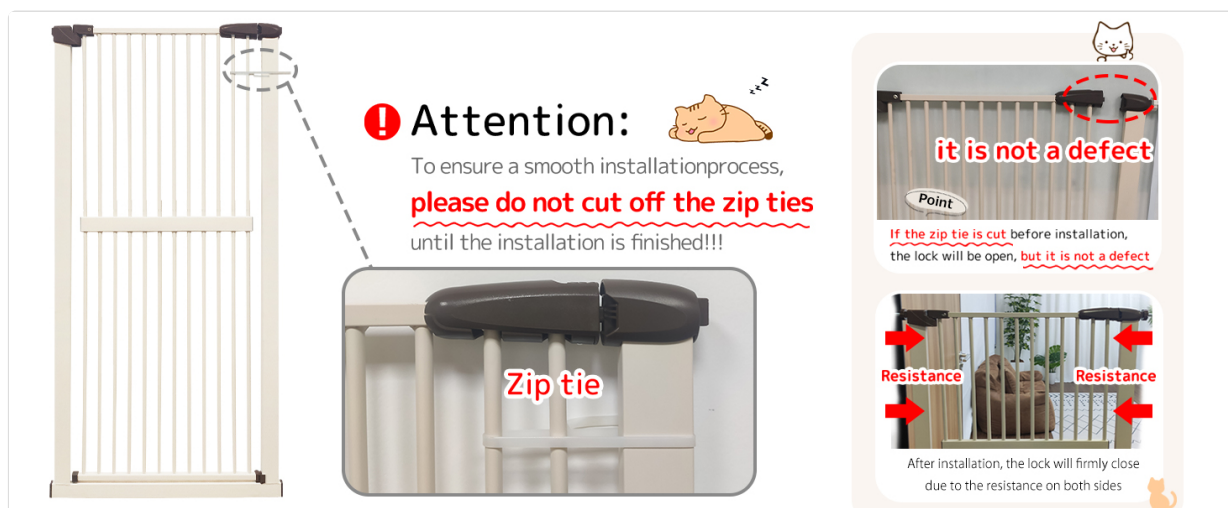


Figure 8: The initial gap in the lock area is normal before full pressure installation. After installation, the lock will firmly close due to the resistance on both sides.

### Gate is difficult to open/close:

Ensure the gate is installed correctly and not overtightened, which can cause friction. Lubricate hinges if necessary. Verify that the floor surface is level.

## SPECIFICATIONS

Feature	Detail
Brand	Lumizone
Model Name	61.02" H-Cream
Mounting Type	Pressure Mount
Height	61.02 inches
Width Range	30.12"-34.05"
Bar Gap	1.37 inches
Material	Metal
Color	Cream
Item Weight	16.94 pounds (7.7 Kilograms)
Target Audience	Dogs, House-cats, Babies

## WARRANTY & SUPPORT

Lumizone is committed to customer satisfaction. If you encounter any issues with your product, such as missing parts, damage, improper fit, or incorrect sizing, please contact us directly for assistance.

**If you encounter any issues after receiving your product**

Missing parts?  
Damaged product?  
Doesn't fit properly?  
Ordered the wrong size?

Please don't rush to return it!  
Contact us — we'll fix it for free!  
No joke, just contact us — it's free!  
Yep, still free — contact us now!  
Email: [lumizone2303@gmail.com](mailto:lumizone2303@gmail.com)

We'll provide a free solution — whether that means sending parts, replacements, or another fix. Your satisfaction is our top priority.

Figure 9: For any product issues, please contact Lumizone directly. We offer free solutions including sending parts, replacements, or other fixes. Your satisfaction is our priority. Email: [lumizone2303@gmail.com](mailto:lumizone2303@gmail.com)