

[Manuals.plus](#) /

> [Hamile](#) /

> Hamile Wireless Keyboard Case for iPad 10th/11th Generation (Purple) - User Manual

## Hamile iPad 10th/11th Gen Keyboard Case

# Hamile Wireless Keyboard Case for iPad 10th/11th Generation (Purple)

Instruction Manual

## PRODUCT OVERVIEW

This Hamile Wireless Keyboard Case is designed to enhance the functionality and protection of your iPad. It features a detachable backlit keyboard, multiple viewing angles, and a dedicated pencil holder, transforming your tablet into a versatile workstation.

### Compatibility

This keyboard case is compatible with the following iPad models:

- **iPad 10th Generation 10.9-inch (2022):** Models A2696, A2757, A2777, A3162
- **iPad A16 11th Generation 11-inch (2025):** Models A3354, A3355, A3356

**Important: Please verify the model number on the back of your tablet before use.**

# Keyboard Case for

iPad A16 11th Gen 11 inch & iPad 10th Gen 10.9 inch



Adjustable Backlight



Mechanical Scissor Keys



Long Battery Life



Non-slip Grooves



Secure Magnetic Design

Figure 1: iPad Compatibility Guide. This image displays the compatible iPad models and their corresponding model numbers, highlighting the 10th and 11th generation iPads.

## WHAT'S IN THE BOX

- 1 x Hamile Keyboard Case for iPad (Purple)
- 1 x Wireless Keyboard
- 1 x Type-C Charging Cable
- 1 x User Manual

*Note: Tablet and stylus are not included.*

## SETUP INSTRUCTIONS

### 1. Installing Your iPad

1. Gently place your iPad into the protective case, ensuring all edges are securely fitted.
2. Confirm that all ports and buttons are accessible through the precise cutouts.



Figure 2: iPad securely placed in the purple protective case, showcasing the precise fit and accessible ports.

## 2. Attaching the Keyboard

1. The wireless keyboard is magnetically detachable. Position the keyboard on the designated area of the case.
2. The magnets will secure the keyboard in place.



Figure 3: The wireless keyboard magnetically attaching to the case, demonstrating its detachable feature.

### 3. Bluetooth Pairing

1. Turn on the keyboard by sliding the ON/OFF switch to the "ON" position. The Power LED will light up.
2. Press the "Connect" button on the keyboard. The Bluetooth indicator light will flash.
3. On your iPad, go to "Settings" > "Bluetooth" and turn Bluetooth on.
4. Select "Bluetooth 3.0 Keyboard" from the list of available devices.
5. Once paired, the Bluetooth indicator light will stop flashing.

## OPERATING INSTRUCTIONS

---

### Adjusting Viewing Angles

The case features three grooves to adjust your iPad's viewing angle. Simply place the edge of your iPad into one of the grooves to achieve your desired angle for typing, watching videos, or drawing.

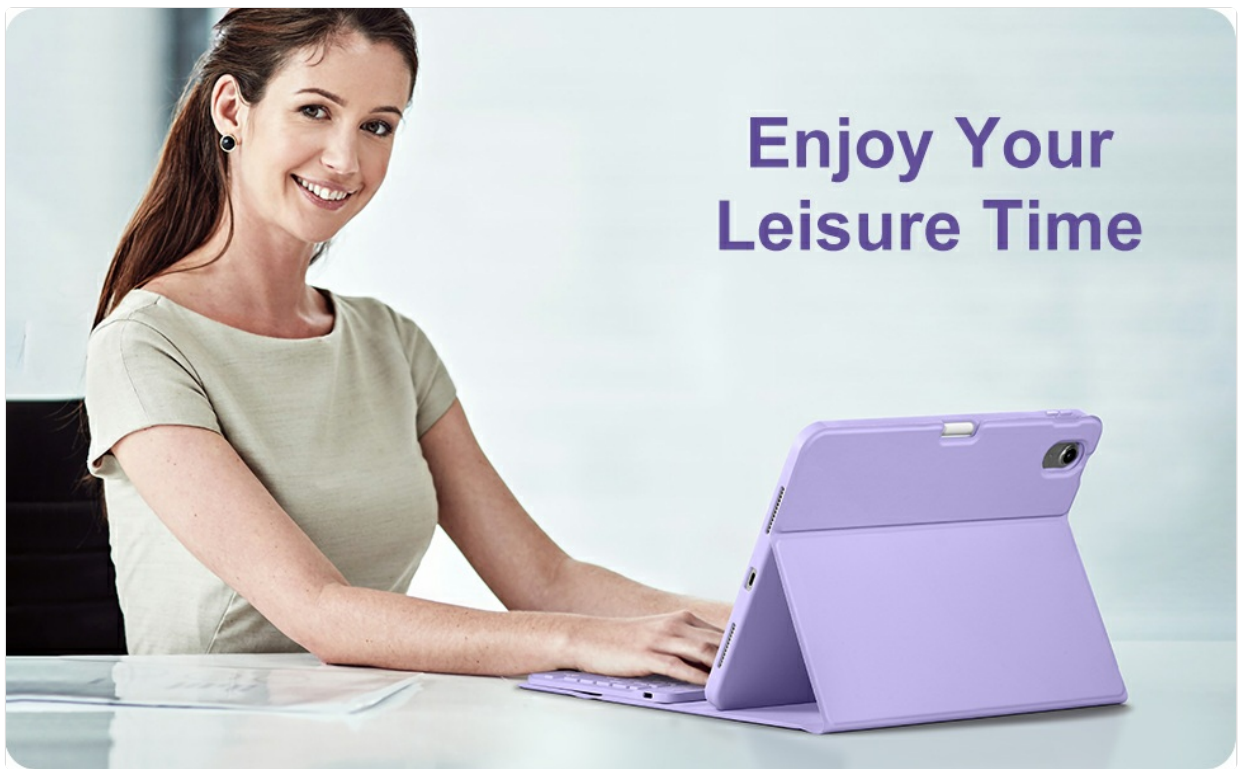


Figure 4: Illustration of the iPad case with three distinct grooves, allowing for adjustable viewing angles (110°, 120°, 130°).

### Keyboard Backlight Adjustment

The keyboard features 7 adjustable backlight colors. Press the **light bulb icon** key to cycle through the colors. Press the **sun icon** key to adjust brightness levels. To turn off the backlight, cycle through all brightness levels or turn off the keyboard.

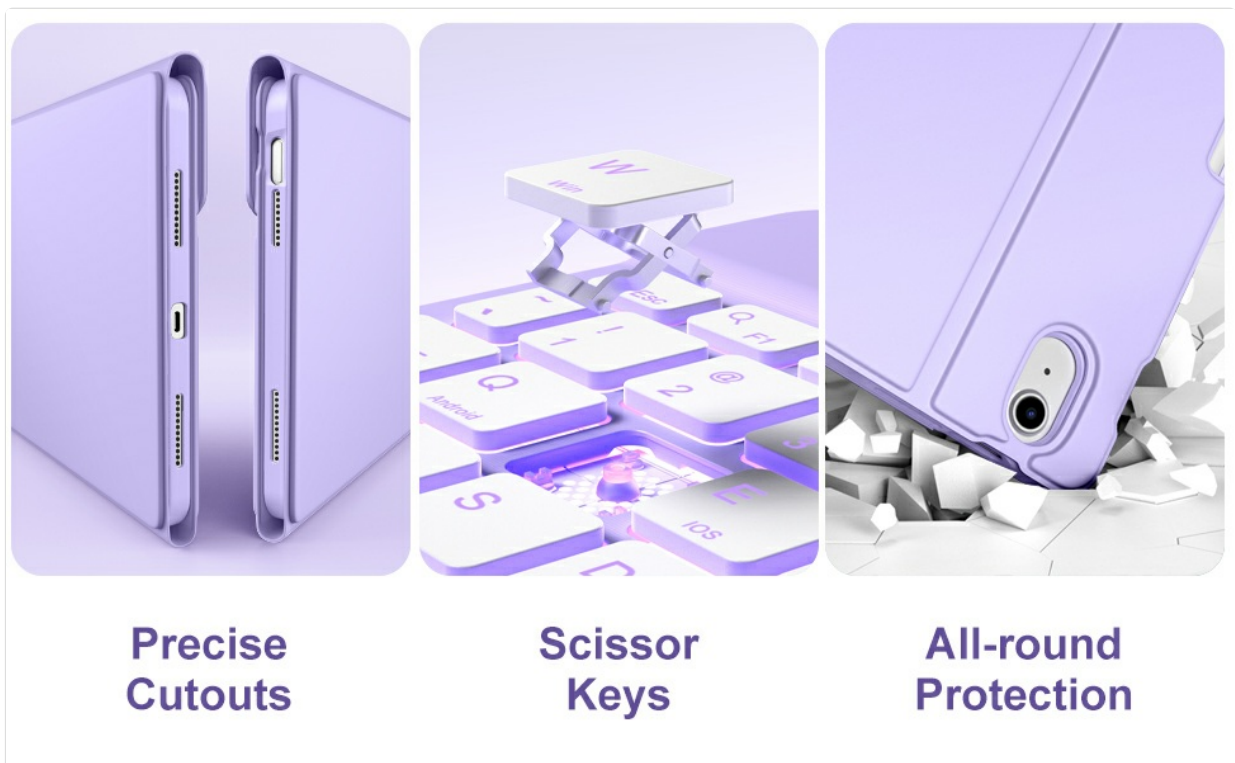


Figure 5: The wireless keyboard showcasing its 7-color backlight feature, with various color options displayed.

### System Compatibility Shortcut Keys

The keyboard is compatible with iOS, Windows, and Android systems. Use the following key combinations to switch between systems:

- Press **Fn + E** to match iOS system.
- Press **Fn + Q** to match Android system.
- Press **Fn + W** to match Windows system.

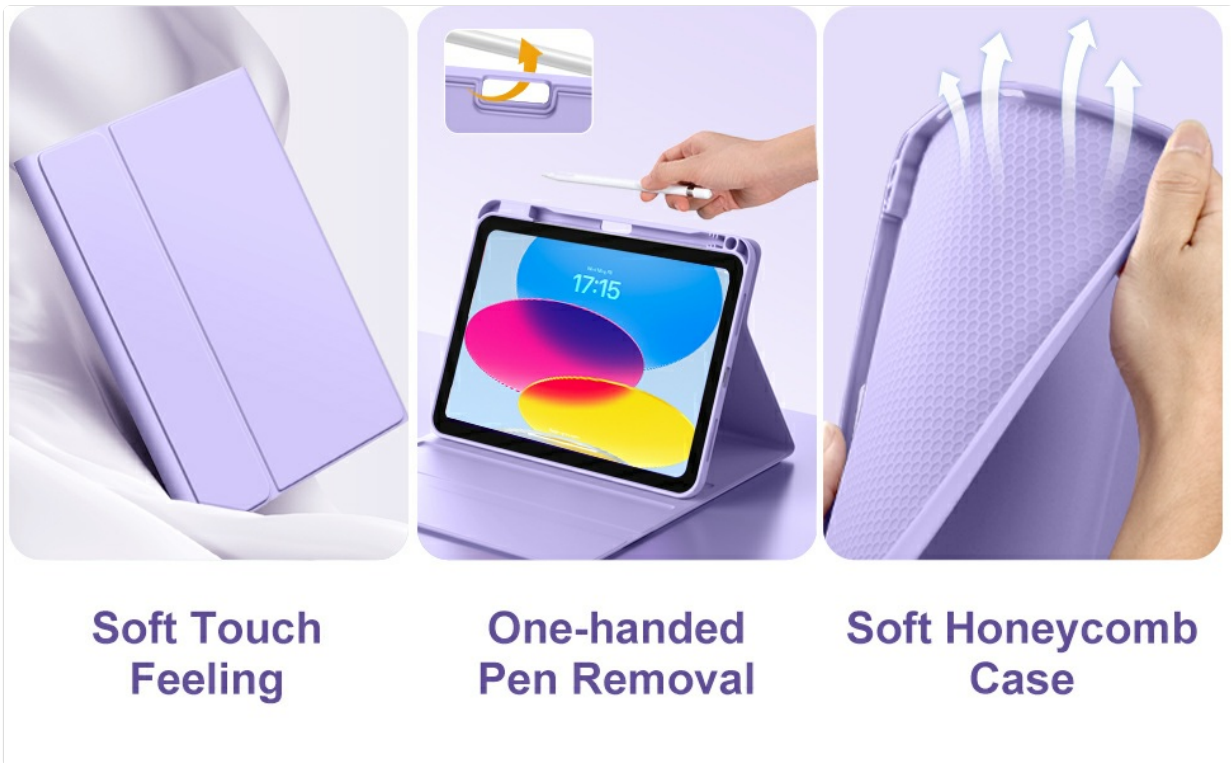


Figure 6: The keyboard layout indicating the Fn key combinations for switching between iOS, Android, and Windows operating systems.

## CHARGING INSTRUCTIONS

The keyboard has a built-in 420mAh battery. To charge the keyboard:

1. Connect the provided Type-C charging cable to the keyboard's charging port.
2. Connect the other end of the cable to a USB power source.
3. The Charge LED indicator will light up red during charging and turn off when fully charged.

A full charge takes approximately 2 hours and provides up to 230 hours of working time.



Figure 7: The wireless keyboard connected to a Type-C charging cable, illustrating the charging process and indicating battery capacity and working time.

## MAINTENANCE

### Material and Protection

The Hamile keyboard case is constructed from high-quality PU (Polyurethane) for a soft, smooth exterior and flexible TPU (Thermoplastic Polyurethane) for the interior case. The honeycomb grid pattern design on the interior aids in heat dissipation.

This design protects your tablet from drops and scratches while allowing full access to all ports, sensors, speakers, microphone, and camera.



Figure 8: Detailed view of the case's soft-touch exterior, one-handed pen removal slot, and soft honeycomb interior for heat release and protection.

## Pencil Holder

The case includes a convenient pencil holder and a pen slot on top. The cutout in the back facilitates easy removal of your stylus for use.

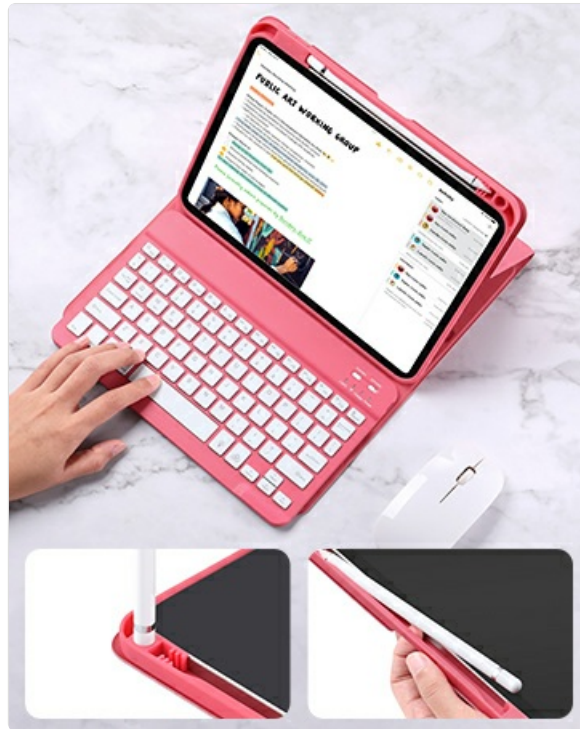


Figure 9: Close-up of the upgraded pen slot, demonstrating easy one-handed placement and removal of a stylus.

## TROUBLESHOOTING

### Keyboard Not Connecting

- Ensure the keyboard is charged and turned on.
- Verify Bluetooth is enabled on your iPad.
- Re-attempt the Bluetooth pairing process (refer to "Bluetooth Pairing" section).
- If the issue persists, restart both your iPad and the keyboard.

### Keys Not Responding

- Check if the keyboard is properly connected via Bluetooth.
- Ensure the keyboard is charged.
- Verify the correct operating system mode is selected (Fn+E for iOS, Fn+Q for Android, Fn+W for Windows).

## SPECIFICATIONS

Feature	Detail
Product Dimensions	10.24 x 8.23 x 1.06 inches

Item Weight	1.57 pounds
Batteries	1 Lithium Polymer battery (included)
Connectivity Technology	Wireless (Bluetooth)
Special Feature	Magnetic, Backlit Keyboard, Detachable
Color	Purple
Material	Polyurethane (PU), Thermoplastic Polyurethane (TPU)

## WARRANTY AND SUPPORT

---

Hamile offers 24/7 friendly customer service. If you encounter any questions or issues with your product, please feel free to contact us via message. Your satisfaction is our priority.