

[manuals.plus](#) /

› [AIYATO](#) /

› [AIYATO Smart LED Bulb User Manual - Model 642b34fc-0064-474d-88ca-ae1d2be60c2a](#)

AIYATO 642b34fc-0064-474d-88ca-ae1d2be60c2a

AIYATO Smart LED Bulb User Manual

Model: 642b34fc-0064-474d-88ca-ae1d2be60c2a

INTRODUCTION

This manual provides comprehensive instructions for the installation, operation, maintenance, and troubleshooting of your AIYATO Smart LED Bulbs. Please read this manual carefully before use to ensure proper functionality and safety.

SAFETY INFORMATION

- Ensure the power is off before installing or removing the bulb.
- Do not use in fully enclosed fixtures as this may shorten bulb lifespan.
- Suitable for indoor use only.
- Operate within the specified voltage range (100-120 Volts, 60 Hertz).
- Keep out of reach of children.

SETUP GUIDE

1. Physical Installation

1. Unpack the AIYATO Smart LED Bulb from its packaging.
2. Ensure the power to the light fixture is turned off at the switch.
3. Carefully screw the E26 base bulb into a standard E26 light socket. Do not overtighten.
4. Turn on the power to the light fixture. The bulb should illuminate.



Image: Two AIYATO Smart LED Bulbs (A19/E26) shown alongside a smartphone screen displaying the CozyLife app's color wheel and preset color options for light control.

2. App Download and Pairing

- Download the "CozyLife" app from your smartphone's app store (available for iOS and Android).
- Open the CozyLife app and register for an account or log in.
- Ensure your smartphone is connected to a 2.4GHz Wi-Fi network. The AIYATO Smart LED Bulbs only support 2.4GHz Wi-Fi.
- In the app, follow the on-screen instructions to add a new device. This typically involves turning the bulb on and off a few times to put it into pairing mode (it will flash).
- Select your 2.4GHz Wi-Fi network and enter the password when prompted by the app.
- Once successfully paired, the bulb will stop flashing and appear in your app's device list.

I APP Remote Control



Image: An outdoor scene at night, showcasing a house with its exterior lights changed to various colors (blue, orange, pink) using AIYATO Smart LED Bulbs, controlled via the CozyLife app on a smartphone.

3. Voice Assistant Integration (Optional)

- **For Amazon Alexa:**

- a. Open the Alexa app.
- b. Go to "Skills & Games" and search for "CozyLife".
- c. Enable the CozyLife skill and link your CozyLife account.
- d. Discover devices. Your smart bulbs should now be controllable via Alexa.

- **For Google Assistant:**

- a. Open the Google Home app.
- b. Tap the "+" icon, then "Set up device" > "Works with Google".
- c. Search for "CozyLife", select it, and link your CozyLife account.

d. Assign your smart bulbs to rooms for easier control.

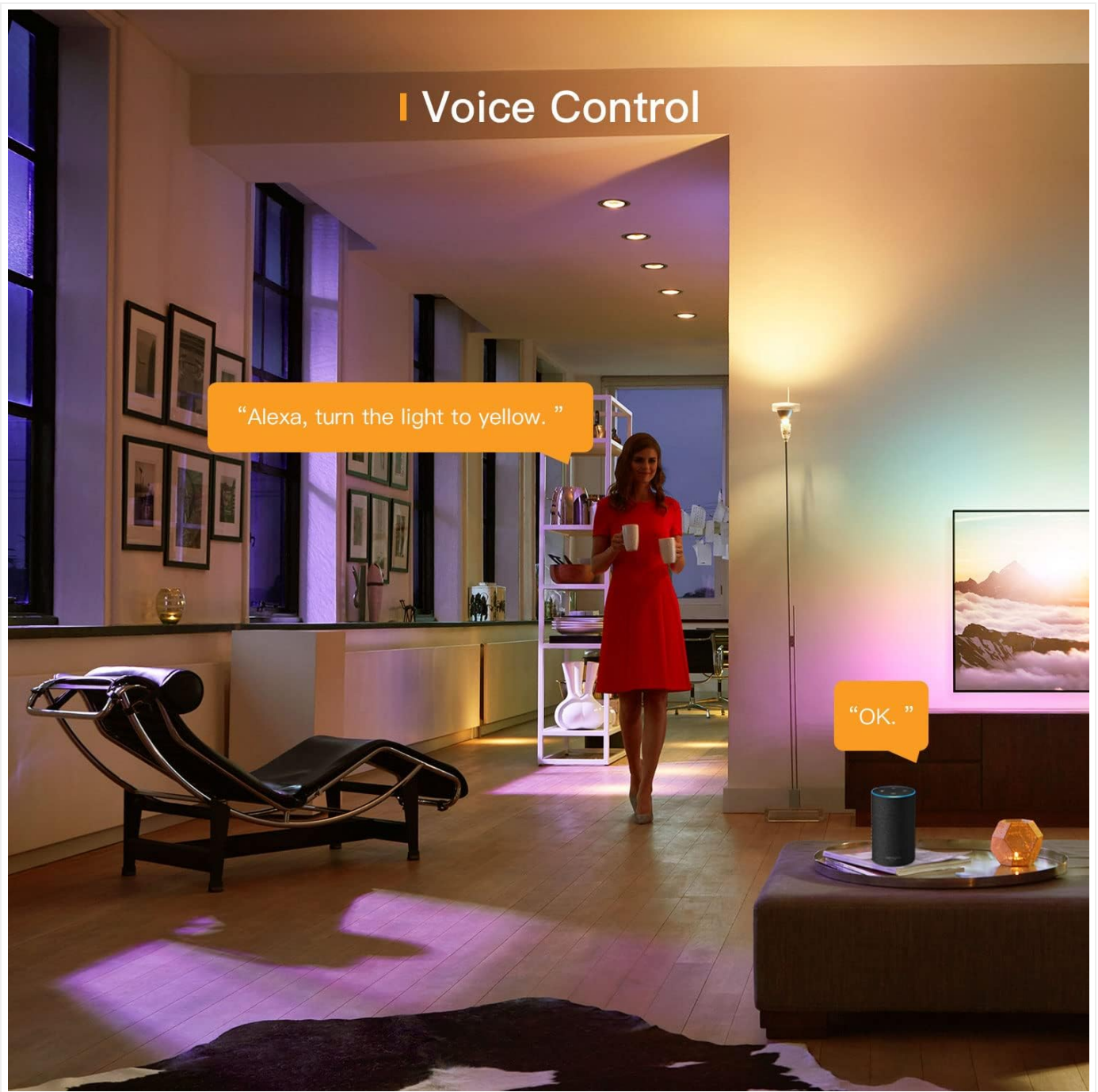


Image: A woman in a modern living room interacting with an Amazon Echo device, giving the voice command "Alexa, turn the light to yellow," demonstrating voice control functionality for the smart bulbs.



Image: A family in a kitchen, with an Amazon Echo device on the counter, responding to the voice command "Alexa, turn on the kitchen light," illustrating seamless voice control integration.

OPERATING INSTRUCTIONS

1. APP Remote Control

The CozyLife app allows full control over your smart bulbs from anywhere with an internet connection.

- **Turn On/Off:** Tap the power icon next to the bulb's name in the app.
- **Color Changing:** Select from 16 million colors using the color wheel or choose from preset scenes.
- **Brightness Adjustment:** Adjust the brightness from 1% to 100% to suit your preference.
- **Color Temperature:** Adjust white light from warm (2000K) to cool (6500K).



Image: A central AIYATO Smart LED Bulb surrounded by icons and text highlighting its key features: 16 Million Colors, Brightness Adjustment, Timer Schedule, Energy Saving, adjustable color temperature (2000K-6500K), 110V compatibility, 2.4GHz WiFi, Voice Control, Group Control, and APP Remote Control.



Image: Five pendant lights illuminating a wall, with labels indicating color temperatures from 2000K (warm yellow) to 6500K (cool white), demonstrating the bulb's adjustable white light range.

| Group Control



Image: A split view of a living room, with the top half illuminated in a vibrant blue and the bottom half in a rich pink, demonstrating the AIYATO Smart LED Bulb's ability to change colors.

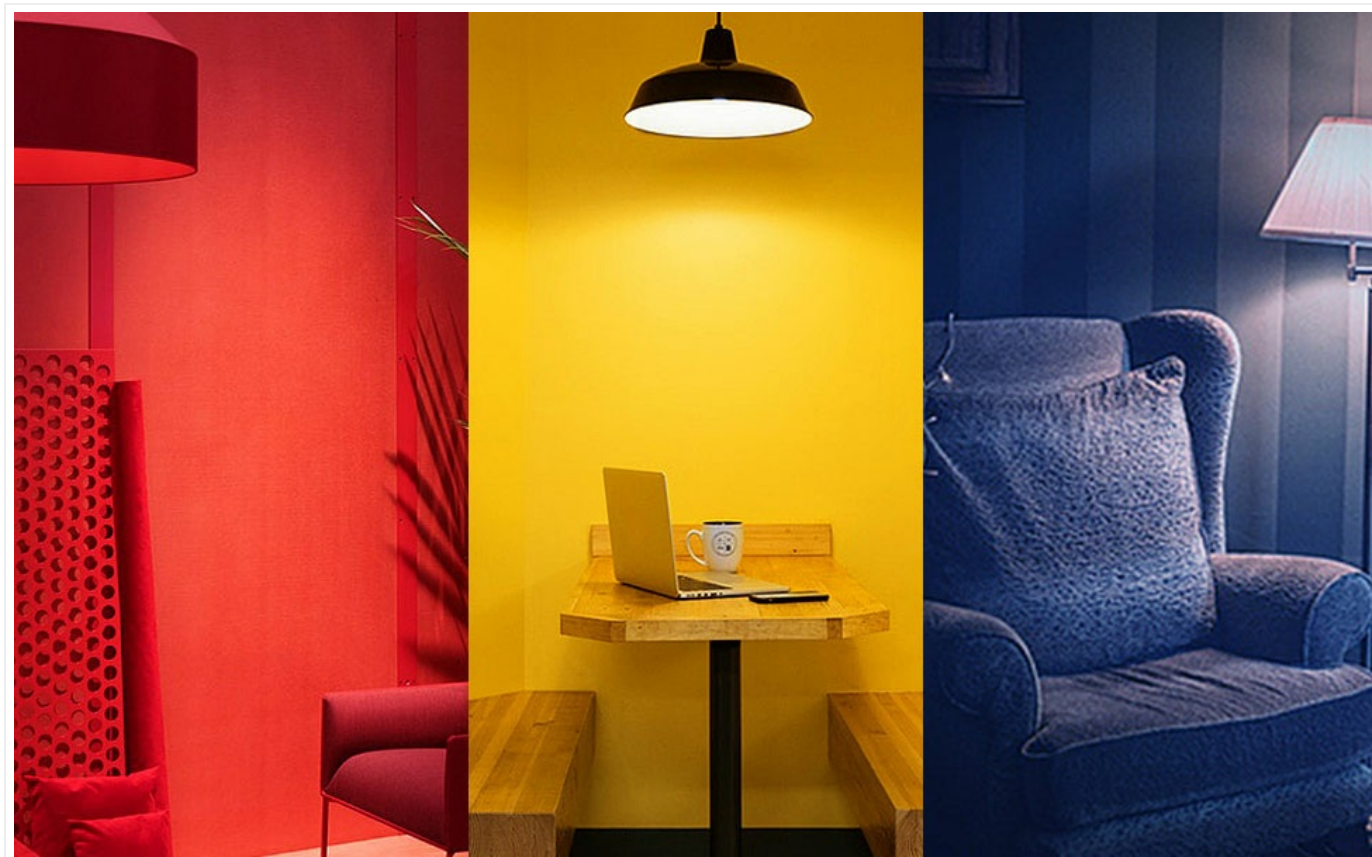


Image: A triptych showing three different interior spaces, each bathed in a single, distinct color: red, yellow, and blue, illustrating the wide range of color options available with the smart bulbs.

2. Music Sync Mode

The bulbs can synchronize with music, changing colors and brightness based on the rhythm and decibel level of surrounding sound detected by your smartphone's microphone.

- In the CozyLife app, navigate to the "Music" section.
- Enable microphone access for the app if prompted.
- Play music, and the bulbs will respond to the beat.



Image: A person playing an acoustic guitar in a cozy room with a fireplace, surrounded by floating musical notes, visually representing the music sync feature of the smart bulbs.

3. Group Control

Control multiple bulbs simultaneously by grouping them in the CozyLife app.

- In the app, select the bulbs you wish to group.
- Create a new group and assign a name (e.g., "Living Room Lights").
- You can now control all bulbs in that group with a single command or setting.

APP Remote Control



Image: An outdoor patio area at dusk, featuring multiple smart bulbs labeled "Smart Bulb1," "Smart Bulb2," and "Smart Bulb3," being controlled simultaneously by a smartphone displaying the CozyLife app's color selection interface, demonstrating group control.



Image: A modern living room with a diagram illustrating how individual smart bulbs can be linked together to form a "Group" for synchronized control, highlighting the group/individual control feature.

4. Timer and Schedule

Set schedules for your bulbs to turn on/off at specific times, or use countdown timers.

- Access the "Timer" or "Schedule" section within the app for each bulb or group.
- Configure desired on/off times for daily routines.
- Use the countdown timer for temporary lighting needs.

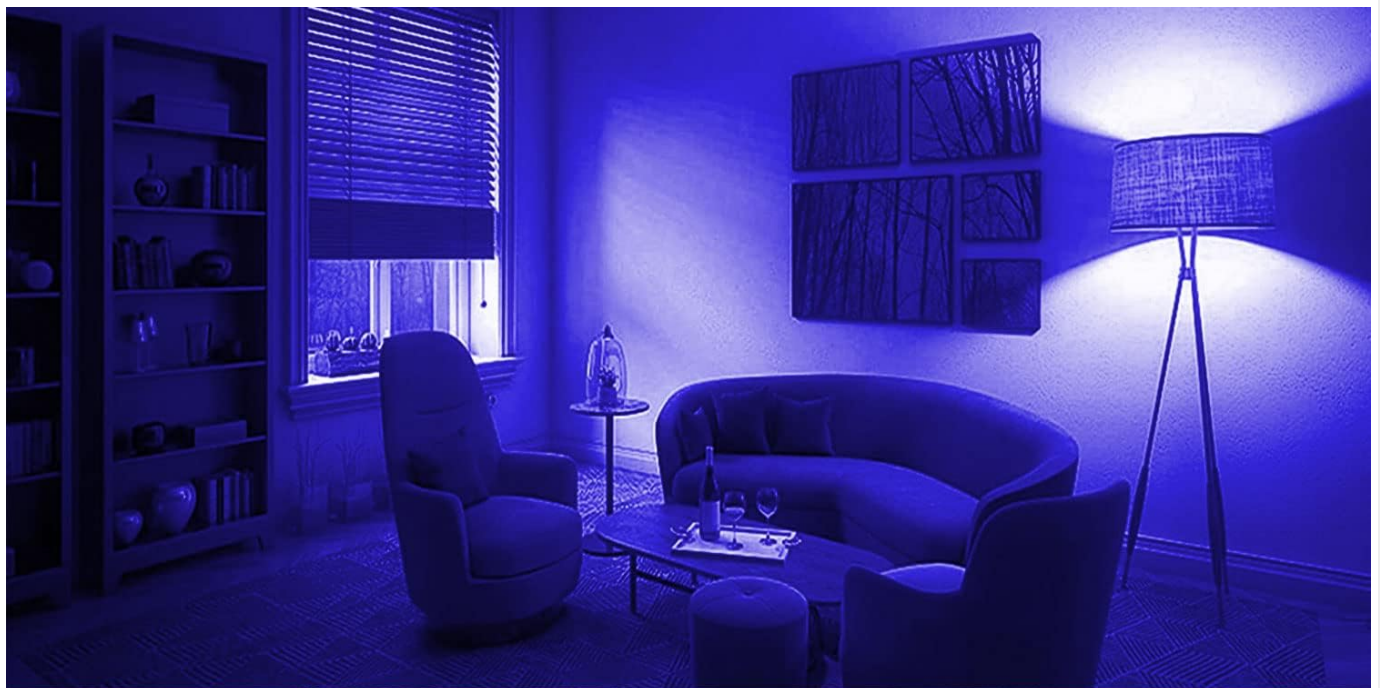


Image: A family (mother and two children) relaxing in a bedroom, with a smartphone in the foreground displaying the CozyLife app's timer settings, showing options to "Turn on at 18:00" and "Turn off at 08:00" for the smart bulbs.

MAINTENANCE

- **Cleaning:** Ensure the bulb is off and cool before cleaning. Wipe with a soft, dry cloth. Do not use liquid cleaners.
- **Storage:** If storing the bulb for an extended period, keep it in a cool, dry place away from direct sunlight.
- **Lifespan:** The bulbs have an approximate lifespan of 25,000 hours under normal usage conditions.

TROUBLESHOOTING

Problem	Possible Cause	Solution
---------	----------------	----------

Problem	Possible Cause	Solution
Bulb does not turn on.	No power to the fixture; bulb not screwed in properly; bulb faulty.	Check light switch and circuit breaker. Ensure bulb is securely screwed in. Test bulb in another working fixture.
Bulb cannot connect to Wi-Fi.	Incorrect Wi-Fi band (5GHz); incorrect password; bulb not in pairing mode; weak signal.	Ensure your router is broadcasting a 2.4GHz Wi-Fi network and your phone is connected to it. Double-check Wi-Fi password. Try resetting the bulb (turn off/on 3-5 times until it flashes). Move closer to the router.
App registration issues.	Server issues; incorrect email/phone format; verification code not received.	Ensure stable internet connection. Verify email/phone number format. Check spam folder for verification codes. Try again later or contact CozyLife app support.
Voice control not working.	Incorrect skill/action linked; device not discovered; voice assistant not connected to internet.	Verify CozyLife skill/action is enabled and linked in Alexa/Google Home app. Redo device discovery. Ensure your voice assistant device has a stable internet connection.
Bulb randomly turns on/off.	Unstable Wi-Fi connection; conflicting schedules/automations; app bug.	Check Wi-Fi stability. Review all schedules and automations in the CozyLife app and linked voice assistant apps. Update the CozyLife app to the latest version.

SPECIFICATIONS

Feature	Detail
Brand	AIYATO
Model Number	642b34fc-0064-474d-88ca-ae1d2be60c2a
Light Type	LED
Bulb Shape Size	A19
Bulb Base	E26
Wattage	9 Watts
Incandescent Equivalent	60 Watts
Brightness	800 Lumens
Color Temperature	2000K - 6500K (Warm to Cool White)
Special Features	Color Changing, Dimmable, Energy Efficient, Eye-Friendly, Timer
Control Method	App (CozyLife), Voice (Alexa, Google Assistant)
Connectivity	2.4GHz Wi-Fi (IEEE 802.11 b/g/n)
Voltage	100-120 Volts, 60 Hertz
Indoor/Outdoor Usage	Indoor

Feature	Detail
Material	Copper
Product Dimensions	2.3 x 2.3 x 3.2 inches
Item Weight	4.2 ounces

WARRANTY INFORMATION





AIYATO Smart LED Bulbs come with a **12-month warranty** from the date of purchase. This warranty covers manufacturing defects and malfunctions under normal use. It does not cover damage caused by misuse, accidents, unauthorized modifications, or improper installation. Please retain your proof of purchase for warranty claims.

CUSTOMER SUPPORT

For technical assistance, troubleshooting not covered in this manual, or warranty inquiries, please contact AIYATO customer support.

- **Online Support:** Visit the official AIYATO brand store on Amazon for more information and potential contact options: [AIYATO Brand Store](#)
- Refer to the CozyLife app for in-app support options.

Related Documents - 642b34fc-0064-474d-88ca-ae1d2be60c2a

	AIYATO Locator Quick Start Guide and User Manual This guide provides instructions for setting up, locating, and managing the AIYATO Locator, a device compatible with Apple's Find My network. Learn how to add the locator to your Apple ID, find your items, handle device loss, and reset the device.
	Smart Finder Quick Start Guide - AIYATO FinderGo A concise guide to setting up and using the AIYATO Smart Finder (Model: FinderGo) for tracking your items with Apple's Find My app. Learn about specifications, connection, location features, and important safety details.
	AIYATO Luggage Companion User Manual & Quick Start Guide User manual for the AIYATO Luggage Companion item tracker, detailing setup, locating items using Apple Find My, managing lost devices, battery replacement, and safety information.
	AIYATO TAG-L2-FinderGo Item Tracker - Works with Apple Find My Discover the AIYATO TAG-L2-FinderGo, a reliable item tracker compatible with Apple's Find My network. Easily locate your keys, bags, and luggage using your iPhone, iPad, or Mac. Features a compact design and essential specifications for tracking personal items.

<div data-bbox="126 127 306 145"><p>OWNER'S MANUAL</p></div> <div data-bbox="126 161 306 194"><p>Model 474A & 474C Hay Indicator Kit (Crop Eyes)</p></div> <div data-bbox="126 255 298 302"><p>HARVEST <i>Equipment and Products for Quality Hay™</i> P.O. Box 44 • 2025 Harvest Road • Middleburg, NE 68041 800.425.7468 • www.harvestindicators.com</p></div> <div data-bbox="126 320 252 338"><p>©2014 HARVEST & SONS 488</p></div>	<div data-bbox="341 161 1174 194"><p>Harvest Tec 474A & 474C Hay Indicator Kit (Crop Eyes) Owner's Manual</p></div> <div data-bbox="341 203 1465 275"><p>Comprehensive owner's manual for the Harvest Tec 474A and 474C Hay Indicator Kits, providing detailed instructions for installation, operation, wiring, and troubleshooting on various baler models.</p></div>
--	---