

[Manuals.plus](#) /

› [DUODUOGO](#) /

› DUODUOGO P6 10-inch Tablet User Manual

## DUODUOGO P6

# DUODUOGO P6 10-inch Tablet User Manual

Model: P6

## 1. INTRODUCTION

This manual provides essential information for setting up, operating, maintaining, and troubleshooting your DUODUOGO P6 10-inch Tablet. Please read this manual thoroughly before using your device to ensure proper functionality and longevity.

## 2. PACKAGE CONTENTS

Verify that all items listed below are present in your product package:

- DUODUOGO P6 10-inch Tablet
- Keyboard
- Mouse
- Tablet Case
- Charger
- Stylus

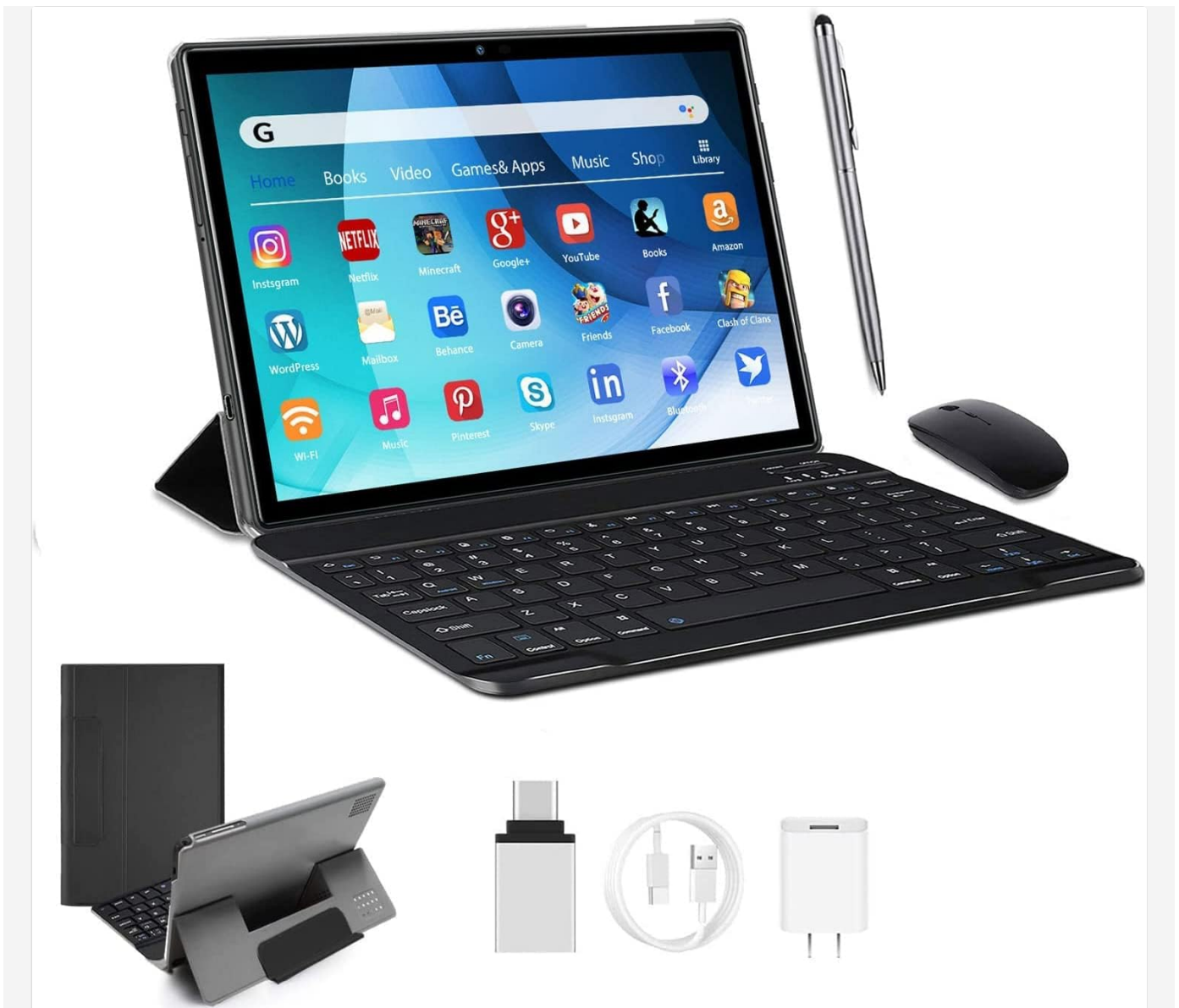


Image: The DUODUOGO P6 tablet displayed with its full set of accessories, including the detachable keyboard, mouse, stylus, protective case, charger, and charging cable.

### 3. DEVICE OVERVIEW

Familiarize yourself with the physical components of your DUODUOGO P6 tablet:



Image: A diagram illustrating the various ports and buttons on the DUODUOGO P6 tablet. Labels indicate the volume up (VOL+) and volume down (VOL-) buttons, reset button, front camera (5.0MP), rear camera (8.0MP) with flash, TF card slot (supports up to 128GB), SIM1 card slot, SIM2 card slot, and Type-C interface.

- **Volume Buttons (VOL+ / VOL-):** Adjust audio volume.
- **Reset Button:** Used to restart the device in case of unresponsiveness.
- **Front Camera (5.0MP):** For video calls and selfies.
- **Rear Camera (8.0MP) with Flash:** For capturing photos and videos.
- **TF Card Slot:** Insert a Micro SD card (up to 128GB) for expanded storage.
- **SIM1 & SIM2 Card Slots:** Insert 4G cellular SIM cards for mobile data and calls.
- **Type-C Interface:** For charging and data transfer.

## 4. INITIAL SETUP

### 4.1 Charging the Tablet

Before first use, fully charge the tablet using the provided charger and Type-C cable. The charging port is located on

the side of the device as indicated in the device overview.

## 4.2 Inserting SIM and TF Cards

1. Power off the tablet.
2. Locate the SIM and TF card slots on the side of the tablet.
3. Carefully insert your SIM card(s) and/or Micro SD card into the respective slots, ensuring correct orientation.
4. Power on the tablet.



Image: A close-up view of the tablet's side, highlighting the dual SIM card slots and the expandable TF (Micro SD) card slot, demonstrating where to insert the cards.

## 4.3 Initial Power On and Android Setup

Press and hold the power button until the DUODUOGO logo appears. Follow the on-screen prompts to complete the initial Android 10 setup, including language selection, Wi-Fi connection, and Google account login.

## 4.4 Connecting Accessories (Keyboard, Mouse, Stylus)

The included keyboard and mouse typically connect via Bluetooth. Refer to their individual instructions for pairing. The stylus may also require Bluetooth pairing or be passive, depending on its design.

# 5. OPERATING INSTRUCTIONS

## 5.1 Android 10 Operating System

Your tablet runs on the GMS-certified Android 10.0 operating system, providing a smooth user experience and access to the Google Play Store for applications. The new notification center and ad-blocking functions enhance usability.



Image: The DUODUOGO P6 tablet screen showing the Android 10 operating system interface with various app icons, demonstrating

its modern and user-friendly design.

## 5.2 Display and Visuals

The 10.1-inch IPS display features a resolution of 1920x1200 pixels, offering clear and vibrant visuals for movies, videos, and web browsing.

**10.1"IPS**  
Screen width

**1920x1200**  
HD resolution

### 10.1 inch HD IPS screen

10.1-inch large-size narrow-edge high-definition IPS full viewing angle screen. Fully fitted work clothes make the screen fresh and transparent. 1920x1200 pixels, more restored image quality and color.



Image: The DUODUOGO P6 tablet, attached to its keyboard, displaying a high-definition video on its 10.1-inch IPS screen, emphasizing its visual quality.

## 5.3 Camera Functions

The tablet is equipped with a 5MP front camera and an 8MP rear camera. Open the camera application to capture photos and videos. Ensure good lighting for optimal results.

# 5 + 8MP HD camera



Dual SIM card



4G network



WIFI



Image: A user holding the DUODUOGO P6 tablet, taking a selfie with the front-facing camera, demonstrating its use for video calls and self-portraits.

## 5.4 Connectivity

- **Wi-Fi:** Connect to wireless networks for internet access.
- **4G Cellular:** Utilize dual SIM card slots for mobile data and communication.
- **Bluetooth:** Pair with wireless accessories like headphones, speakers, keyboard, and mouse.
- **GPS:** Use for navigation and location-based services. Offline maps can be downloaded.

## 5.5 Storage Management

The tablet comes with 64GB of internal storage. You can expand this by up to 128GB using a Micro SD card in the TF card slot. Regularly manage your files and applications to optimize performance.

## 6. MAINTENANCE

### 6.1 Cleaning

Use a soft, lint-free cloth to clean the screen and body of the tablet. Avoid using harsh chemicals or abrasive materials that could damage the surface.

## 6.2 Battery Care

- Avoid exposing the tablet to extreme temperatures.
- Do not allow the battery to fully discharge frequently.
- Use only the provided charger or a certified compatible charger.

## 6.3 Software Updates

Periodically check for system updates in the tablet's settings to ensure you have the latest features and security patches.

## 7. TROUBLESHOOTING

If you encounter issues with your tablet, refer to the following common solutions:

Problem	Solution
Tablet does not turn on	Ensure the battery is charged. Press and hold the power button for 10-15 seconds. If unresponsive, use the reset button.
Cannot connect to Wi-Fi	Check if Wi-Fi is enabled in settings. Restart the tablet and your Wi-Fi router. Ensure correct password entry.
Apps are crashing or slow	Close background applications. Clear app cache. Ensure sufficient storage space. Restart the tablet.
SIM card not detected	Ensure the SIM card is correctly inserted. Restart the tablet. Verify the SIM card is active with your carrier.
Touchscreen unresponsive	Restart the tablet. If the issue persists, use the reset button.

For further assistance, please contact customer support as detailed in the Warranty & Support section.

## 8. SPECIFICATIONS

Feature	Detail
Model	P6
Operating System	Android 10
Screen Size	10.1 Inches
Screen Resolution	1920 x 1200 IPS
Processor	Quad-core CPU
RAM	4 GB
Internal Storage	64 GB
Expandable Storage	Up to 128 GB (Micro SD)

Feature	Detail
Rear Camera	8 MP
Front Camera	5 MP
Battery Capacity	8000 mAh
Connectivity	Dual SIM, 4G Cellular, Bluetooth, GPS
Dimensions (LxWxH)	9.4 x 6.7 x 0.4 inches

## Powerful laptop

La tabella P6 offre prestazioni migliori anche nel campo della grafica, grazie alla combinazione di 8 chip nucleari e 4 GB RAM. La memoria di 64 GB può essere estesa fino a 128 GB e offre uno spazio sufficiente per memorizzare qualsiasi informazione, come musica, video e giochi.

**4 GB**  
RAM

**64 GB**  
ROM

**128 GB**  
Expandable

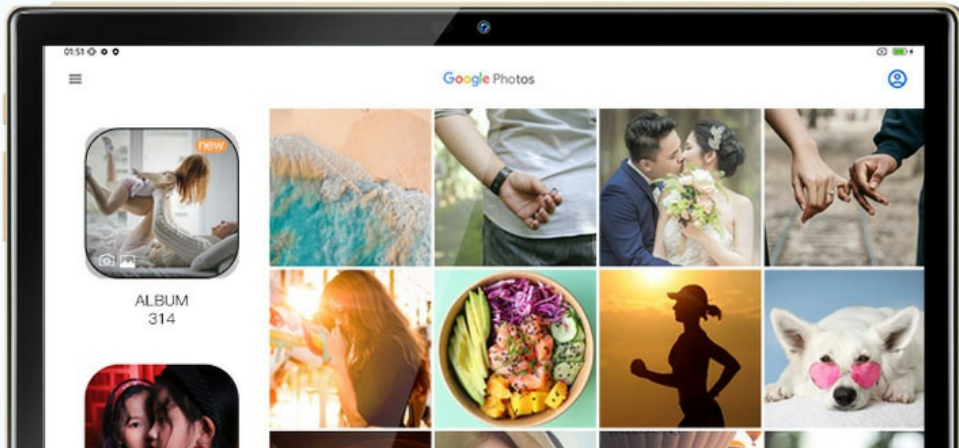


Image: The DUODUOGO P6 tablet screen displaying key specifications such as 4GB RAM, 64GB ROM, and 128GB expandable storage, visually confirming the device's memory capabilities.

## 9. WARRANTY AND SUPPORT

### 9.1 Warranty Information

Your DUODUOGO P6 tablet comes with a one-month free replacement policy and 365 days of free repair service in case of non-human damage.

### 9.2 Customer Support

If you have any questions or require assistance, please contact DUODUOGO customer support through Amazon. We aim to respond to your inquiries and resolve issues within 12 hours.

