

AIYATO cl1001

AIYATO Smart Bulb User Manual

Model: A19/E26/9W/800LM (cl1001)

1. INTRODUCTION

This manual provides essential instructions for the installation, setup, operation, and maintenance of your AIYATO Smart Bulb. Please read this manual thoroughly before use to ensure proper function and safety.

2. SAFETY INFORMATION

- Ensure the power is turned off before installing or removing the bulb.
- Do not use with dimmers unless specifically designed for smart bulbs.
- Suitable for indoor use only.
- Avoid exposing the bulb to water or high humidity.
- Do not disassemble the bulb.

3. PACKAGE CONTENTS

- 1 x AIYATO Smart Bulb (A19/E26/9W/800LM)
- 1 x User Manual (this document)

4. INSTALLATION

1. Turn off the power switch to the light fixture before replacing the old bulb.
2. Screw the AIYATO Smart Bulb into a standard E26 light socket.
3. Turn on the power switch. The bulb should light up, possibly blinking, indicating it is ready for pairing.

5. SETUP: CONNECTING TO THE COZYLIFE APP

The AIYATO Smart Bulb requires the CozyLife app for full functionality. Ensure your Wi-Fi network is 2.4GHz, as 5GHz networks are not supported.

1. **Download the CozyLife App:** Search for "CozyLife" in your smartphone's app store (iOS or Android) and install it.

2. **Register/Log In:** Open the CozyLife app and follow the on-screen instructions to register a new account or log in if you already have one.
3. **Add Device:** In the app, tap the "+" icon or "Add Device" to begin the pairing process.
4. **Confirm Pairing Mode:** Ensure the smart bulb is blinking rapidly. If not, turn the bulb off and on three times (on-off-on-off-on) until it blinks rapidly.
5. **Connect to Wi-Fi:** Select your 2.4GHz Wi-Fi network and enter the password. The app will then attempt to connect to the bulb.
6. **Completion:** Once connected, you can rename the bulb and begin controlling it through the app.



Image: AIYATO Smart Bulb alongside the CozyLife app interface on a smartphone, demonstrating initial setup and color selection.



Image: An AIYATO Smart Bulb with icons illustrating its features, including 16 million colors, brightness adjustment, timer, energy saving, voice control, and 2.4GHz WiFi compatibility.

6. OPERATION

6.1 App Control (CozyLife App)

The CozyLife app provides comprehensive control over your smart bulb:

- **On/Off:** Toggle the bulb's power.
- **Brightness Adjustment:** Adjust brightness from 1% to 100%.
- **Color Changing:** Select from millions of colors or various white temperatures (2000K-6500K).
- **Scene Modes:** Choose from pre-set scenes or create custom lighting effects.
- **Timer & Schedule:** Set schedules for the bulb to turn on/off at specific times.

I APP Remote Control



Image: An exterior view of a house illuminated with various colors from smart bulbs, controlled remotely via a smartphone app.

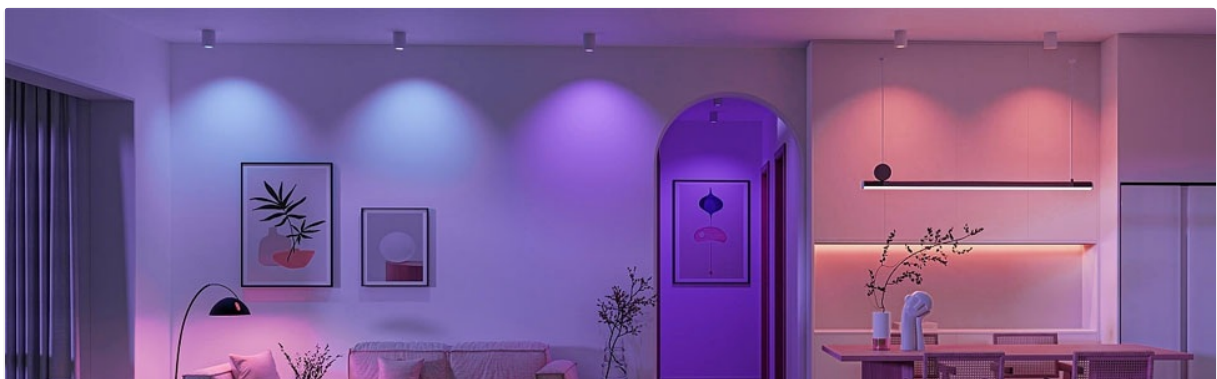


Image: A visual representation of the AIYATO Smart Bulb's ability to produce various white light temperatures, ranging from warm white (2000K) to cool white (6500K).

6.2 Voice Control

The AIYATO Smart Bulb is compatible with Amazon Alexa and Google Assistant. Link your CozyLife account to your voice assistant app to enable voice commands.

- **Example Commands:**

- "Alexa, turn on the living room light."
- "Hey Google, change the bedroom light to blue."
- "Alexa, set the kitchen light brightness to 50%."

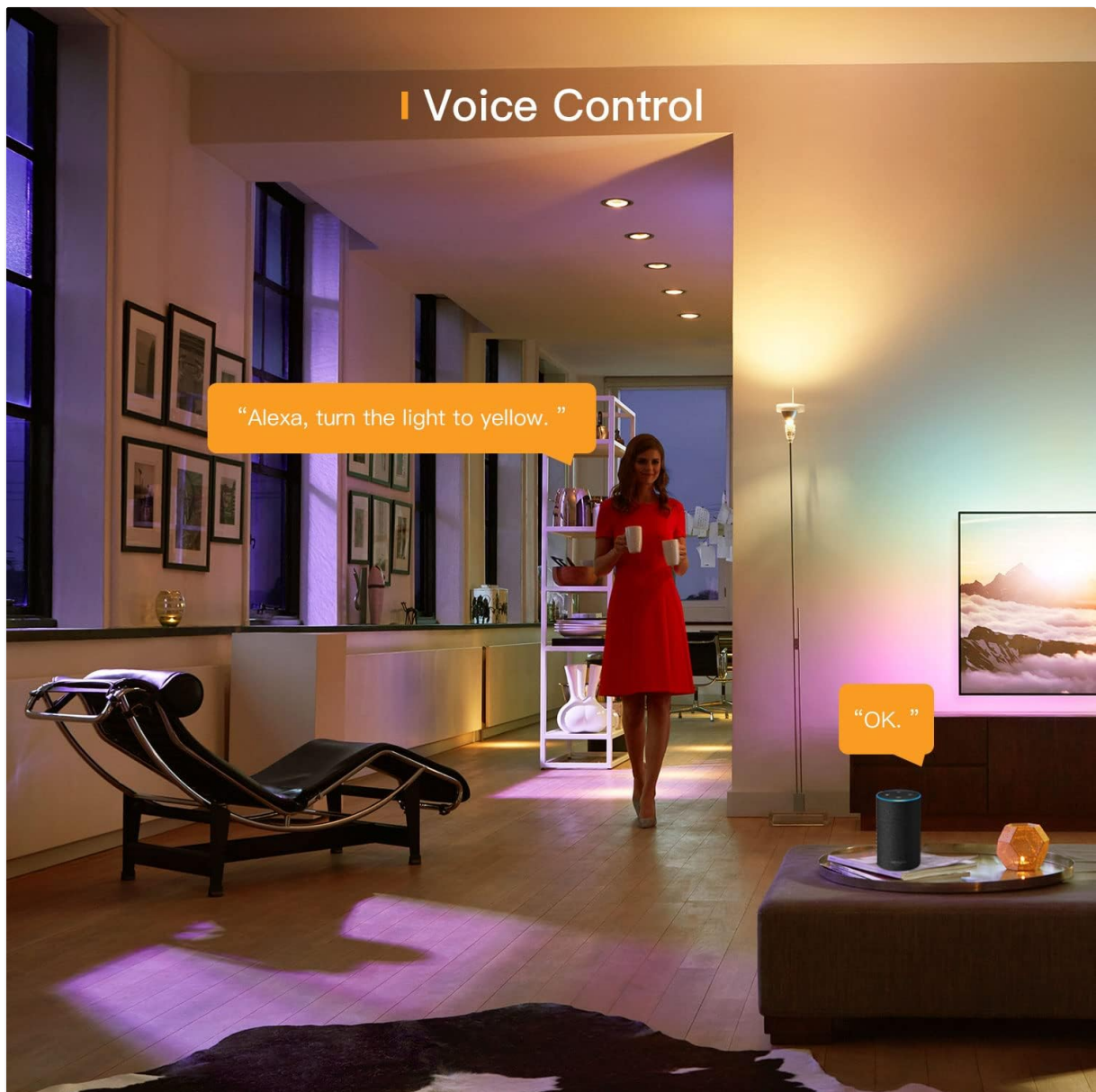


Image: A woman in a living room using voice commands to control a smart light, with a speech bubble showing "Alexa, turn the light to yellow."



Image: A family in a kitchen, with a smart speaker responding to a voice command, "Alexa, turn on the kitchen light."

6.3 Music Sync

The bulb can synchronize its lighting effects with music. This feature uses your smartphone's microphone to detect sound and adjust the light's color and intensity accordingly.

- Activate Music Sync mode within the CozyLife app.
- Ensure your phone's microphone is enabled for the CozyLife app.



Image: A person playing a guitar in a cozy room, with musical notes and colors emanating from the smart bulb, illustrating the Music Mode feature.

6.4 Group Control

Control multiple AIYATO Smart Bulbs simultaneously by grouping them within the CozyLife app.

- In the CozyLife app, navigate to the device settings.
- Select the option to create a group and add desired bulbs.
- Once grouped, commands applied to the group will affect all bulbs within it.

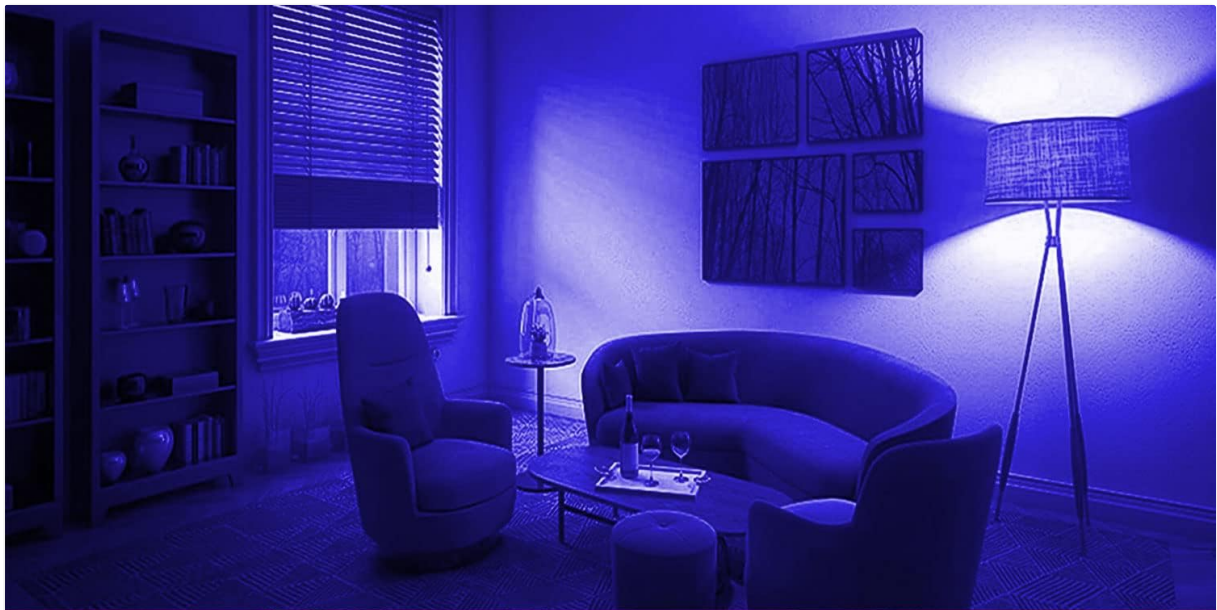


Image: An outdoor patio area with multiple smart lights labeled 'Smart Bulb1', 'Smart Bulb2', 'Smart Bulb3', being controlled simultaneously from a smartphone app, demonstrating group control.



Image: A diagram illustrating how multiple smart bulbs can be linked and controlled as a group or individually within a room setting.

7. MAINTENANCE

The AIYATO Smart Bulb is designed for long-term use with minimal maintenance. Its LED technology provides an approximate lifespan of 25,000 hours.

- **Cleaning:** Ensure the bulb is off and cool before cleaning. Wipe gently with a dry, soft cloth. Do not use liquid cleaners.
- **Storage:** If storing the bulb, keep it in a cool, dry place away from direct sunlight and extreme temperatures.

8. TROUBLESHOOTING

- **Bulb not pairing:**
 - Ensure your Wi-Fi network is 2.4GHz. The bulb does not support 5GHz Wi-Fi.
 - Confirm the bulb is blinking rapidly. If not, cycle the power (on-off-on-off-on) until it blinks.
 - Move the bulb closer to your Wi-Fi router during the pairing process.
 - Check your Wi-Fi password for accuracy.
- **Bulb loses connection:**
 - Verify your Wi-Fi router is functioning correctly.
 - Ensure the bulb is within range of your Wi-Fi signal.
 - Restart the bulb by turning it off and on at the switch.
- **Voice control not working:**
 - Confirm your CozyLife account is correctly linked to your Amazon Alexa or Google Assistant app.
 - Ensure the bulb is online and responsive in the CozyLife app.







- Use the exact device names you assigned in the CozyLife app when giving voice commands.
- **App issues (e.g., unresponsive, registration problems):**
 - Ensure your CozyLife app is updated to the latest version.
 - Try reinstalling the CozyLife app.
 - Check your internet connection.

9. SPECIFICATIONS

Brand	AIYATO
Model Number	cl1001
Light Type	LED
Bulb Shape Size	A19
Bulb Base	E26
Wattage	9 Watts
Brightness	800 Lumens
Color Temperature	2000K-6500K
Voltage	100-120 Volts (60 Hertz)
Control Method	App (CozyLife), Voice (Alexa, Google Home)
Connectivity	2.4GHz Wi-Fi
Average Life	25,000 Hours
Material	Polycarbonate (PC)
Product Dimensions	2.3"W x 3.2"H
Item Weight	1.76 ounces

10. WARRANTY AND SUPPORT

The AIYATO Smart Bulb comes with a **12-month warranty** from the date of purchase. For technical support, warranty claims, or any questions regarding your AIYATO Smart Bulb, please contact the manufacturer directly through their official channels or the retailer where the product was purchased. Please have your purchase receipt and product model number (cl1001) available when contacting support.

 <p>COOL / CL1001 JET / STREAM / JET 100 / A200 DESIGN / DS5001 DY7001</p> <p>www.sodastream.com</p>	<p>SodaStream COOL/CL1001, JET/STREAM/JET 100/A200, DESIGN/DS5001, DY7001 User Manual</p> <p>Official user manual for SodaStream COOL, CL1001, JET, STREAM, JET 100, A200, DESIGN, DS5001, and DY7001 models. Includes getting started, carbonation instructions, cylinder replacement, care, troubleshooting, and warranty information.</p>
	<p>AIYATO Locator Quick Start Guide and User Manual</p> <p>This guide provides instructions for setting up, locating, and managing the AIYATO Locator, a device compatible with Apple's Find My network. Learn how to add the locator to your Apple ID, find your items, handle device loss, and reset the device.</p>
	<p>AIYATO Luggage Companion User Manual & Quick Start Guide</p> <p>User manual for the AIYATO Luggage Companion item tracker, detailing setup, locating items using Apple Find My, managing lost devices, battery replacement, and safety information.</p>
	<p>Smart Finder Quick Start Guide - AIYATO FinderGo</p> <p>A concise guide to setting up and using the AIYATO Smart Finder (Model: FinderGo) for tracking your items with Apple's Find My app. Learn about specifications, connection, location features, and important safety details.</p>
	<p>Confidentiality Request for Shenzhen Lanxingxin Anti-Lose Devices</p> <p>Official confidentiality request letter from Shenzhen Lanxingxin Technology Co., Ltd. regarding their 'FIND MY anti-lose device' and related models, submitted to Eurofins Electrical and Electronic Testing NA, Inc. for FCC compliance.</p>
	<p>Shenzhen Lanxingxin Technology Co., Ltd. - FIND MY Anti-Lose Device Model Differences</p> <p>This document details the model differences for the FIND MY anti-lose device manufactured by Shenzhen Lanxingxin Technology Co., Ltd. It lists various model names, the trade name CIRCE, and the FCC ID 2A9NQ-F6, clarifying that all models share the same circuit and RF module, differing only in name.</p>